

Community Centre

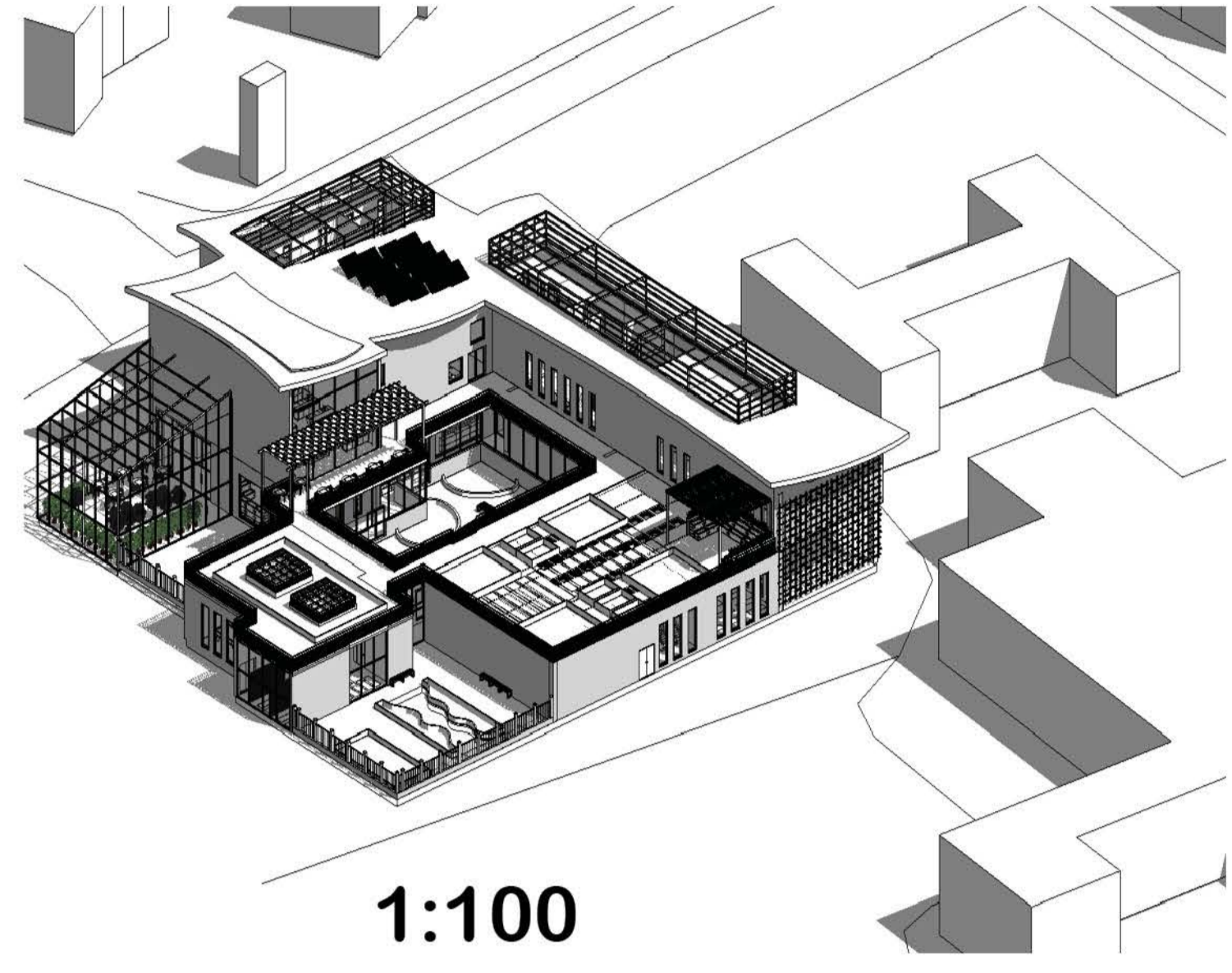
The intergenerational community centre is designed as a welcoming environment that will encourage socialisation between the two different generations, while also supporting the clients health and wellbeing and giving them the sense of independence.

As it can be seen through this work the concept focuses on connecting through shared spaces, movement and visibility instead of separating the activities, this design aims to bring the community together. The building is organised around a central courtyard which becomes a place of socialisation of this project. Having a middle courtyard creates a strong visual relationship between the spaces while also improving orientation and wayfinding, especially for dementia users. This courtyard also helps bring in natural light into this project.

The spatial organisation balances the quiet and active spaces throughout this design. The public spaces such as souvenir shop, cafe, library, gym and activity rooms are positioned around main circulation routes which encourages movement and interaction. The curved forms and softer transitions from one space to another creates a more comfortable experience for the users. Overall this project aims to create a community focused design while also improving the quality of life for the users.



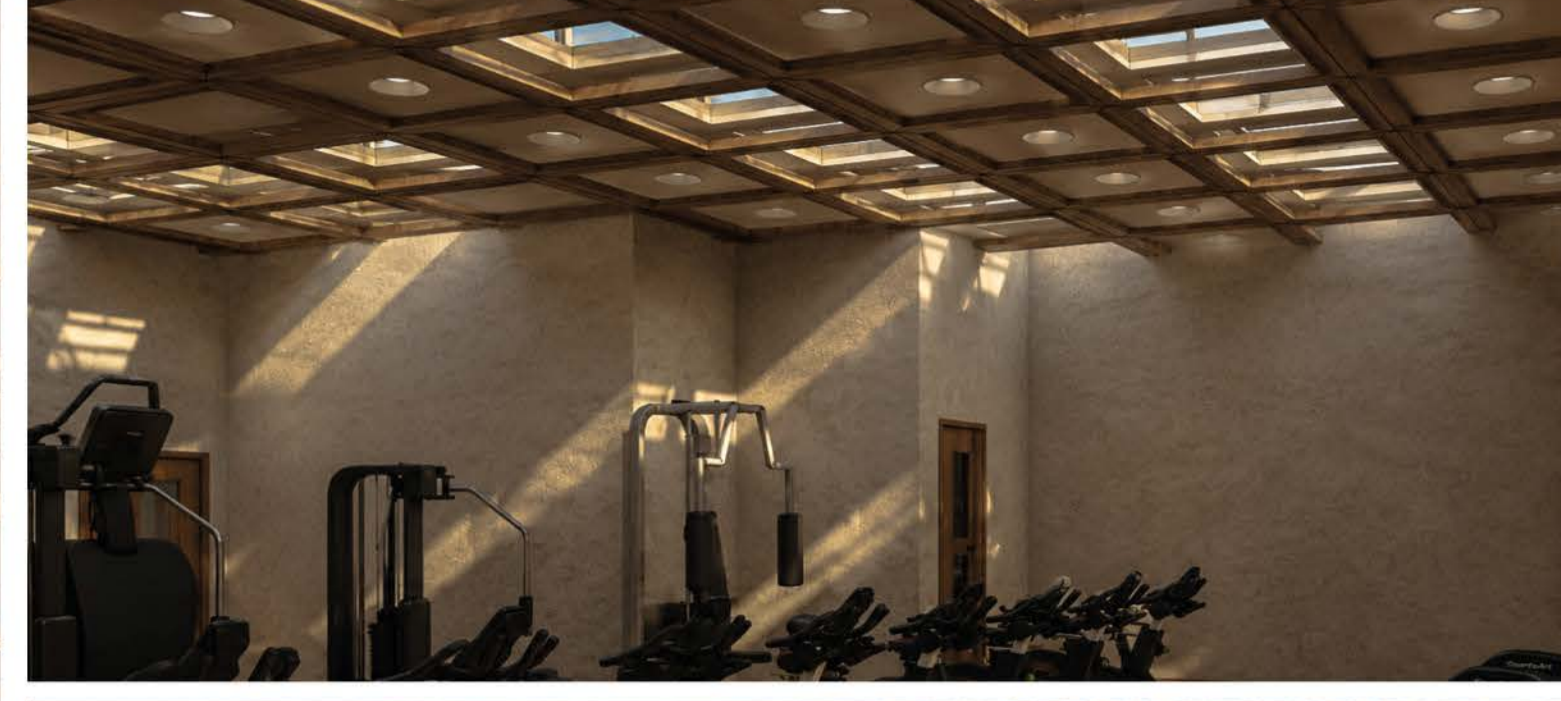
Placed On Site



Floorplans



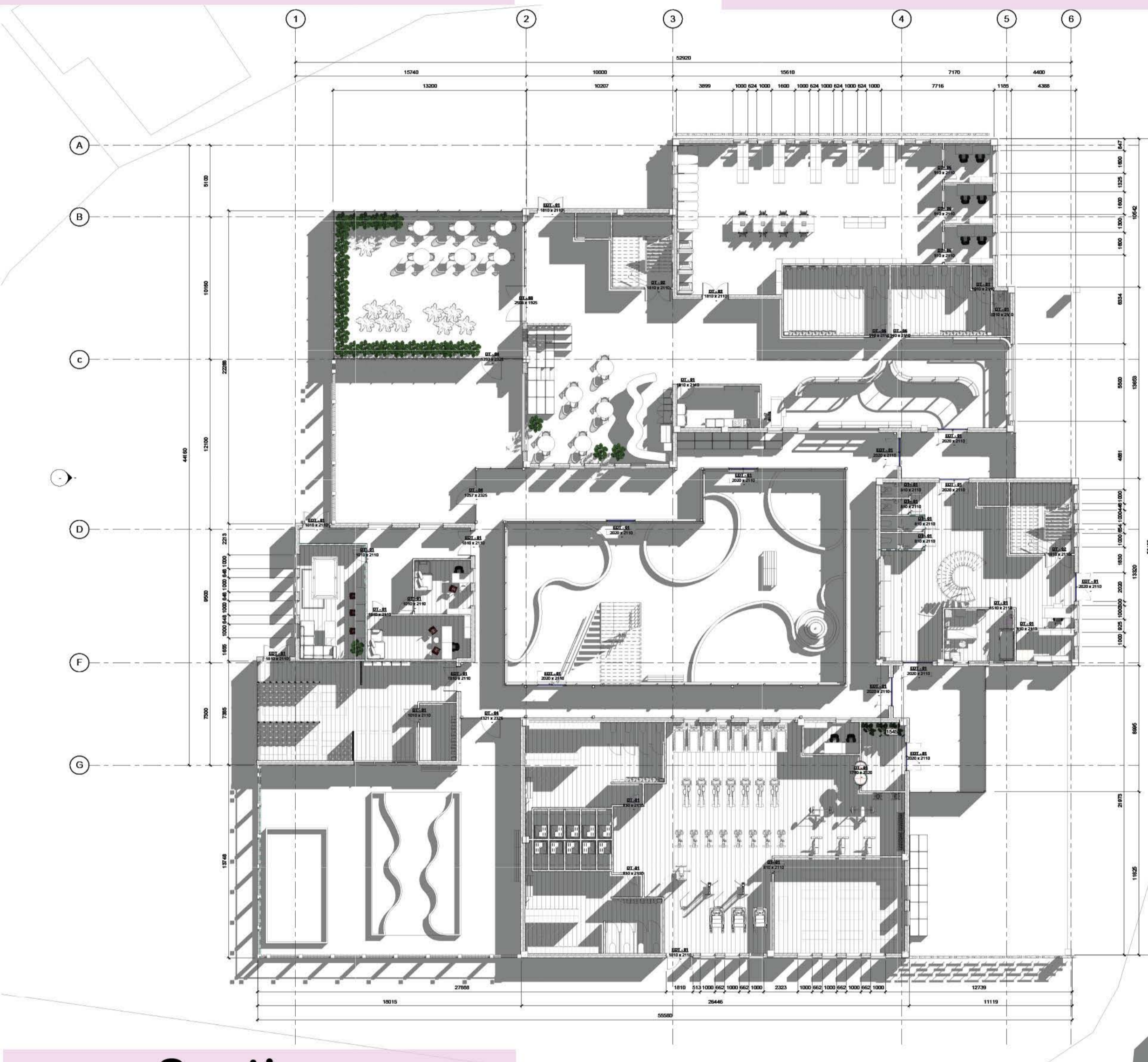
Ground Floor



First Floor

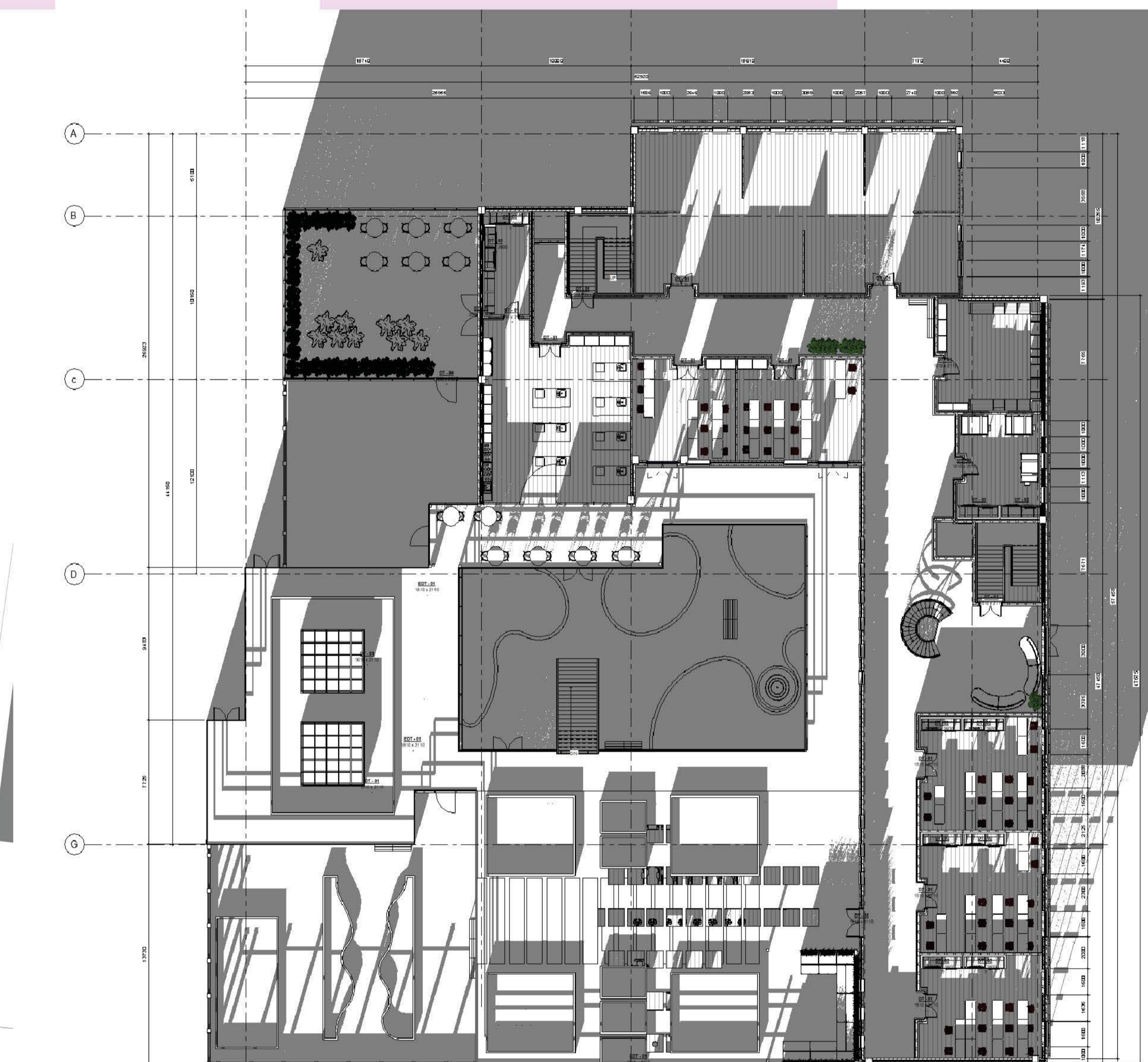


Sections

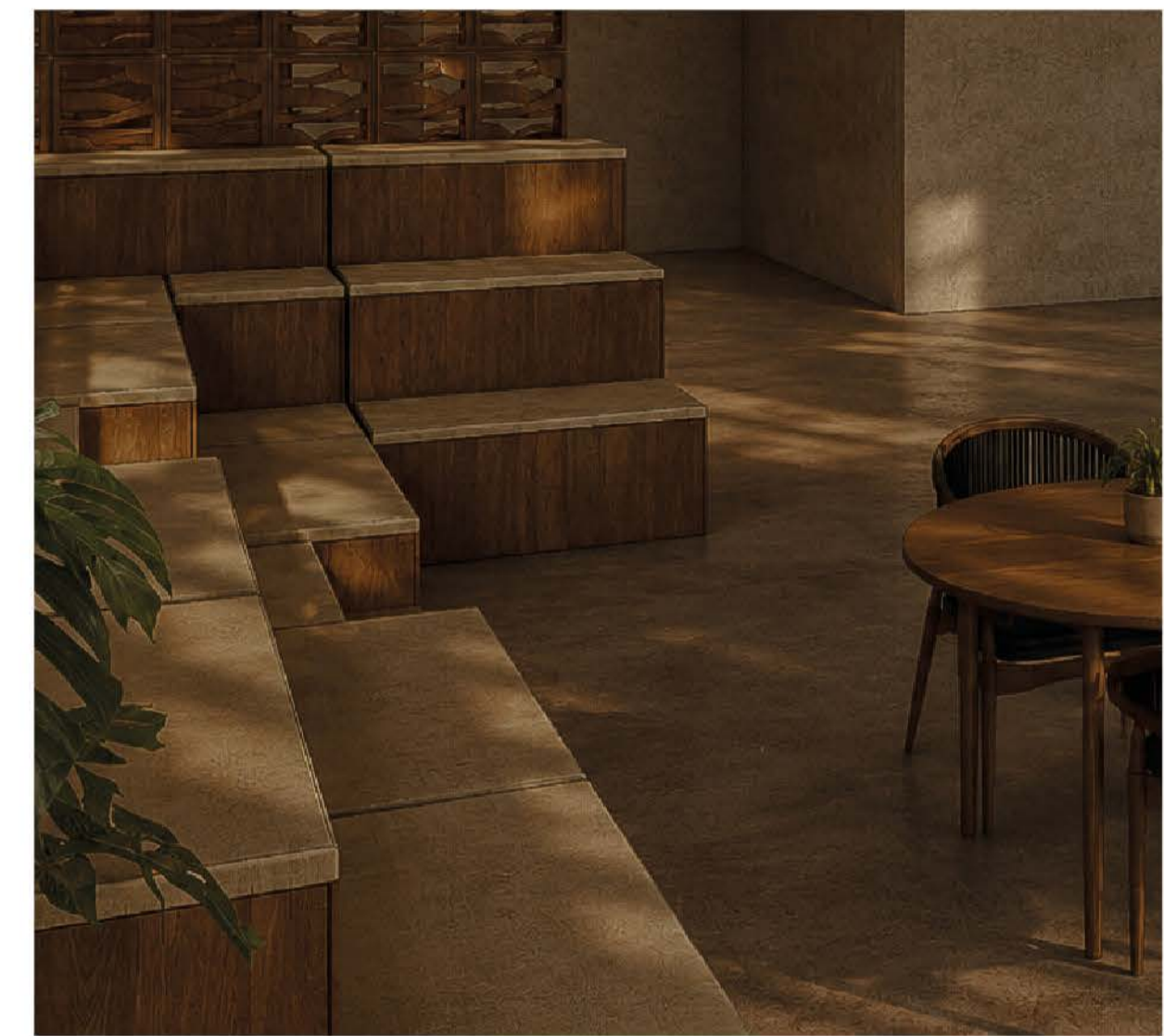


A.A

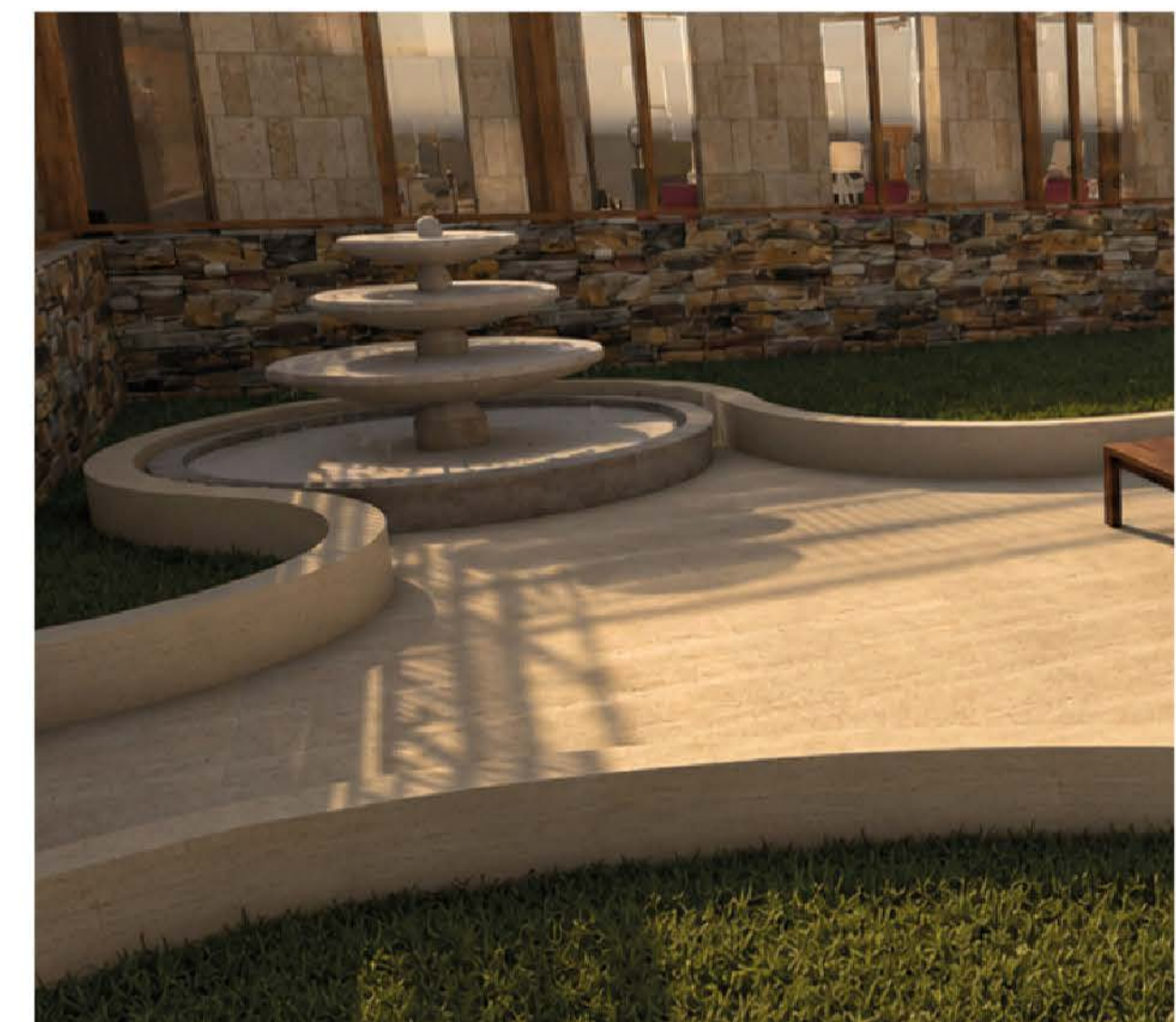
1:100



1:100



A.B



Elevations

North

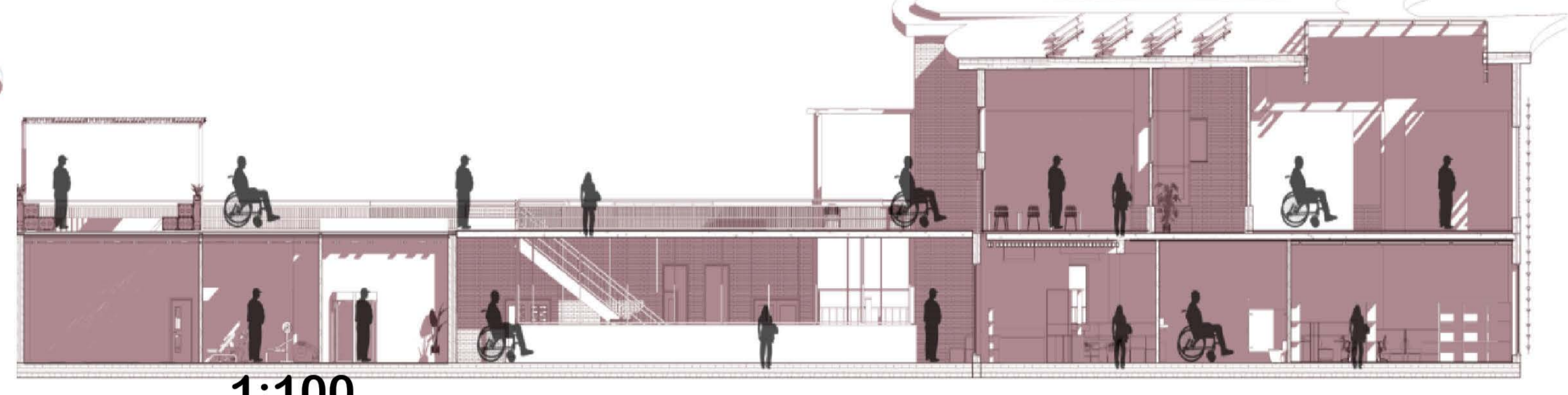
South

East

West

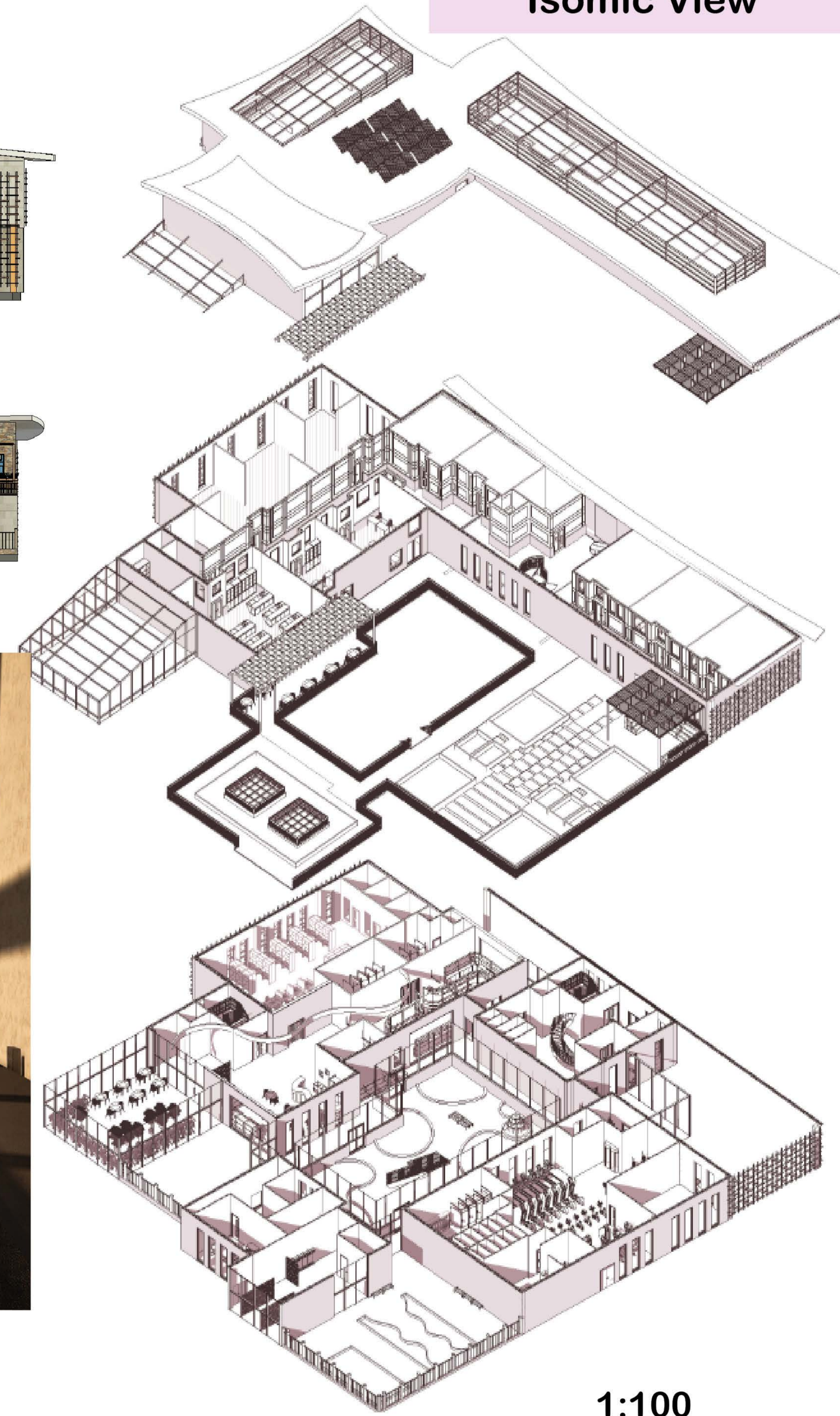


1:100



1:100

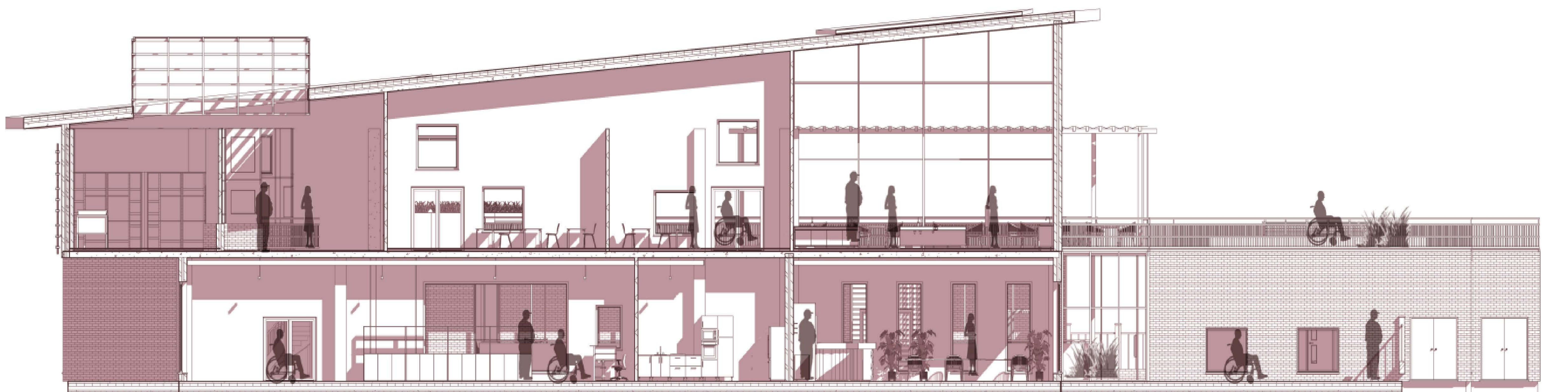
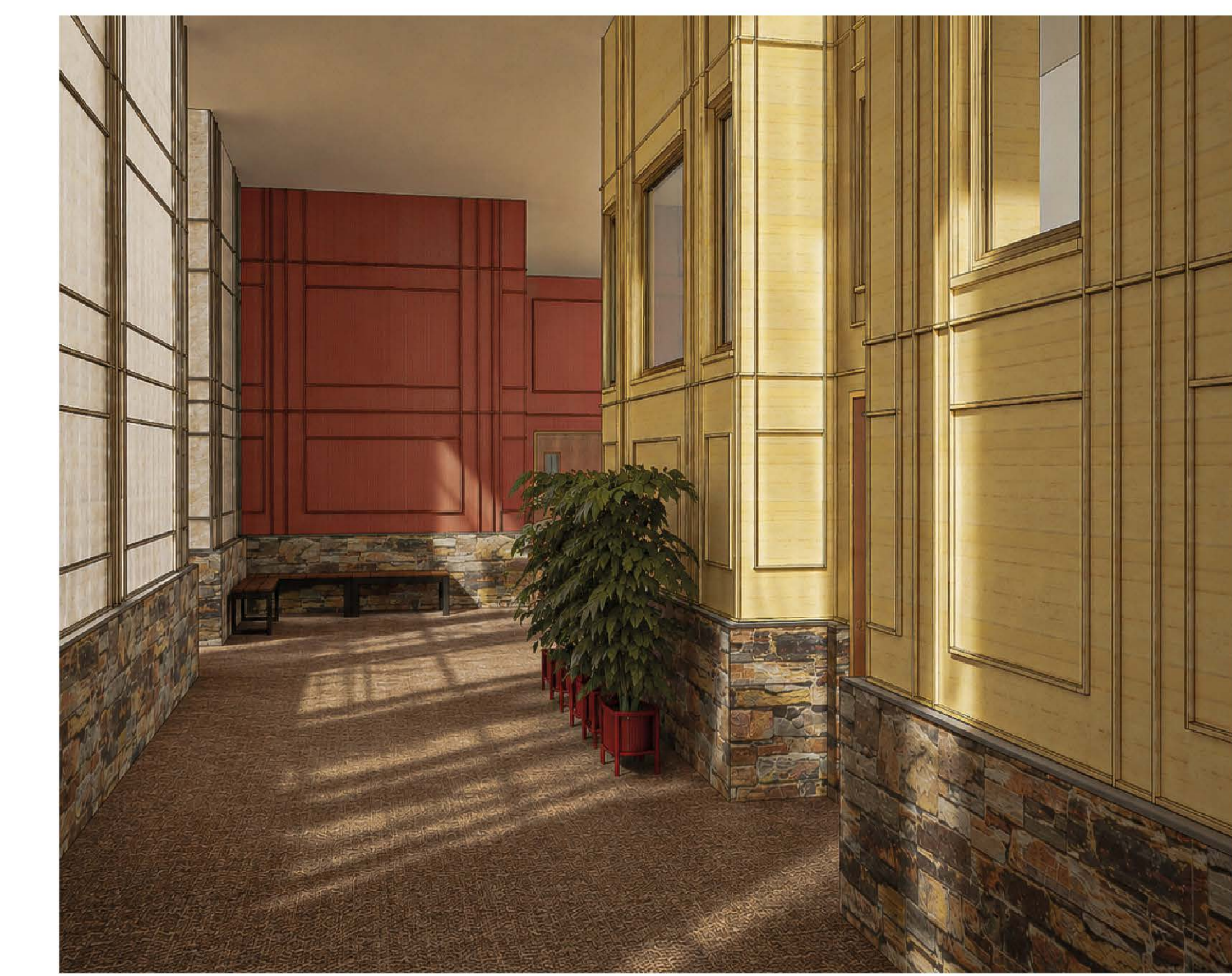
Isometric View



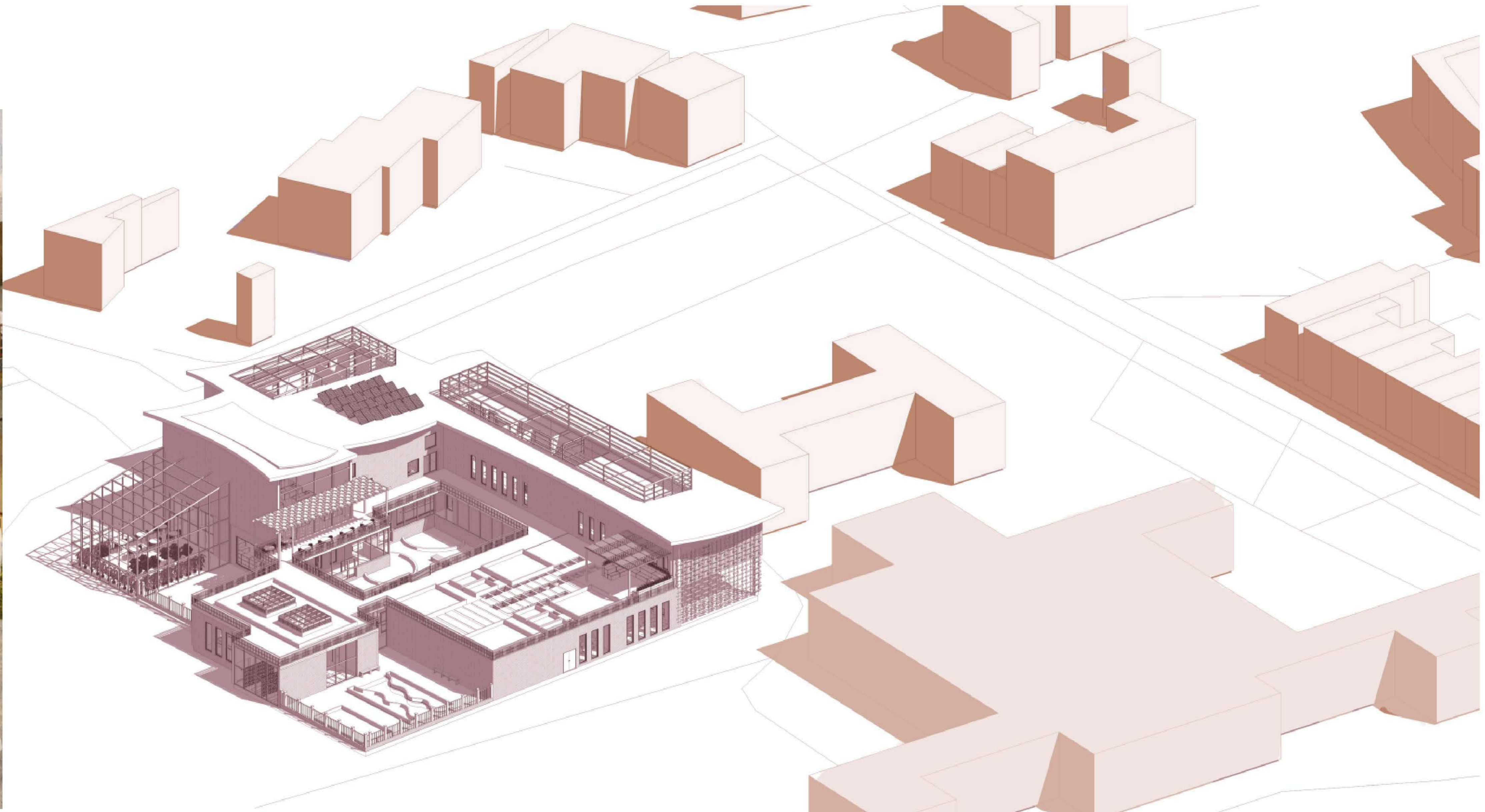
1:100

Renders

1:100



1:100



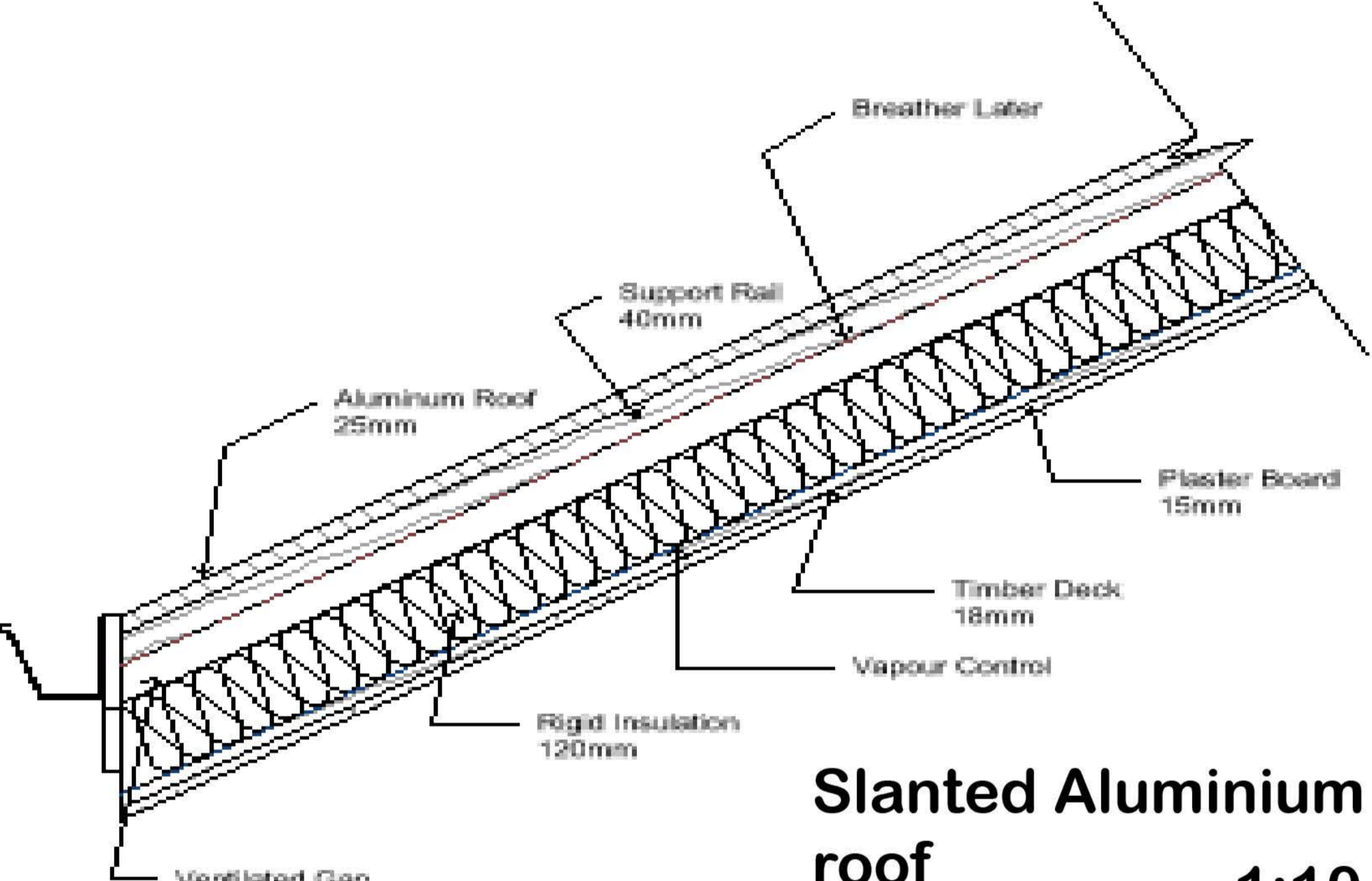
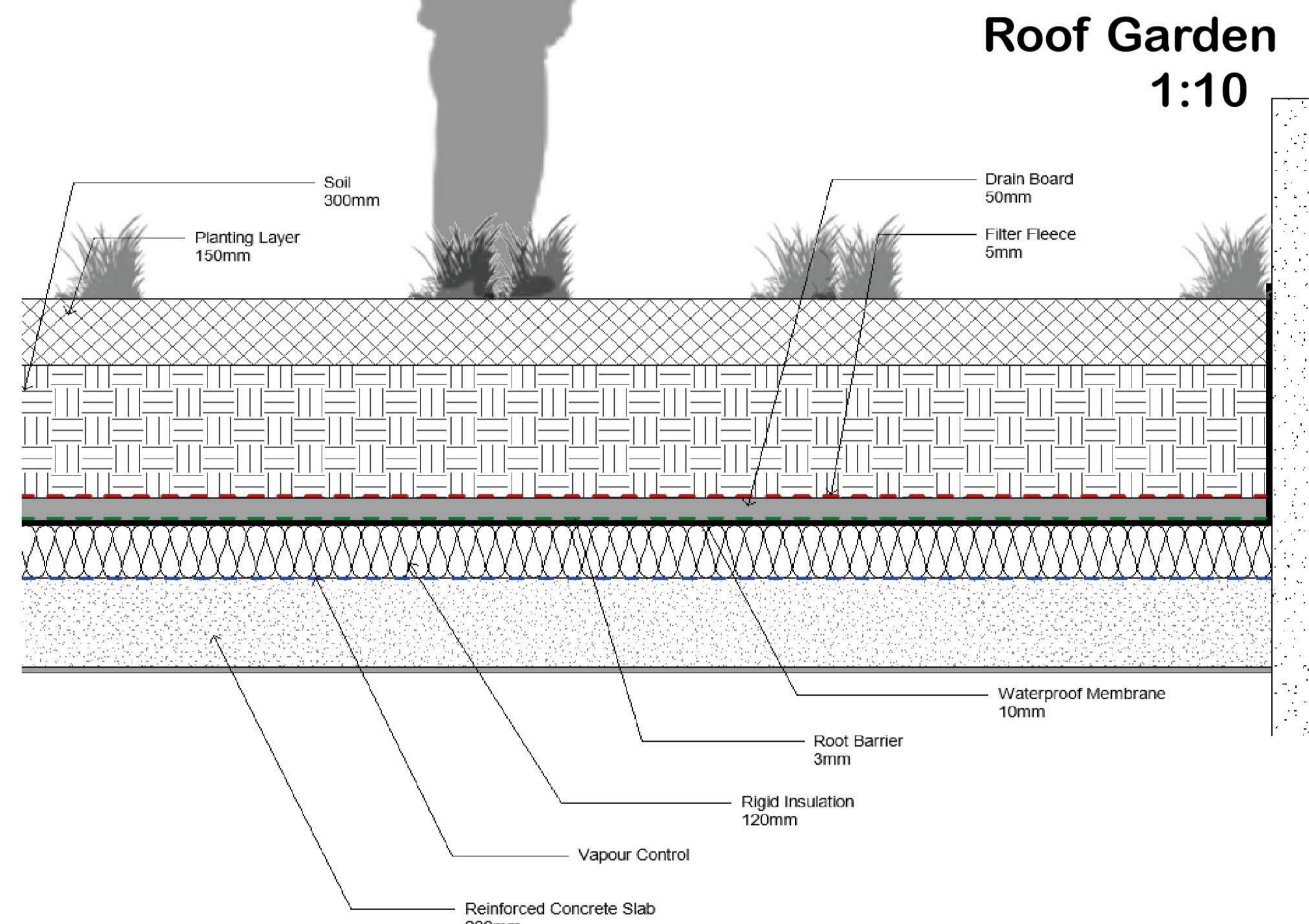
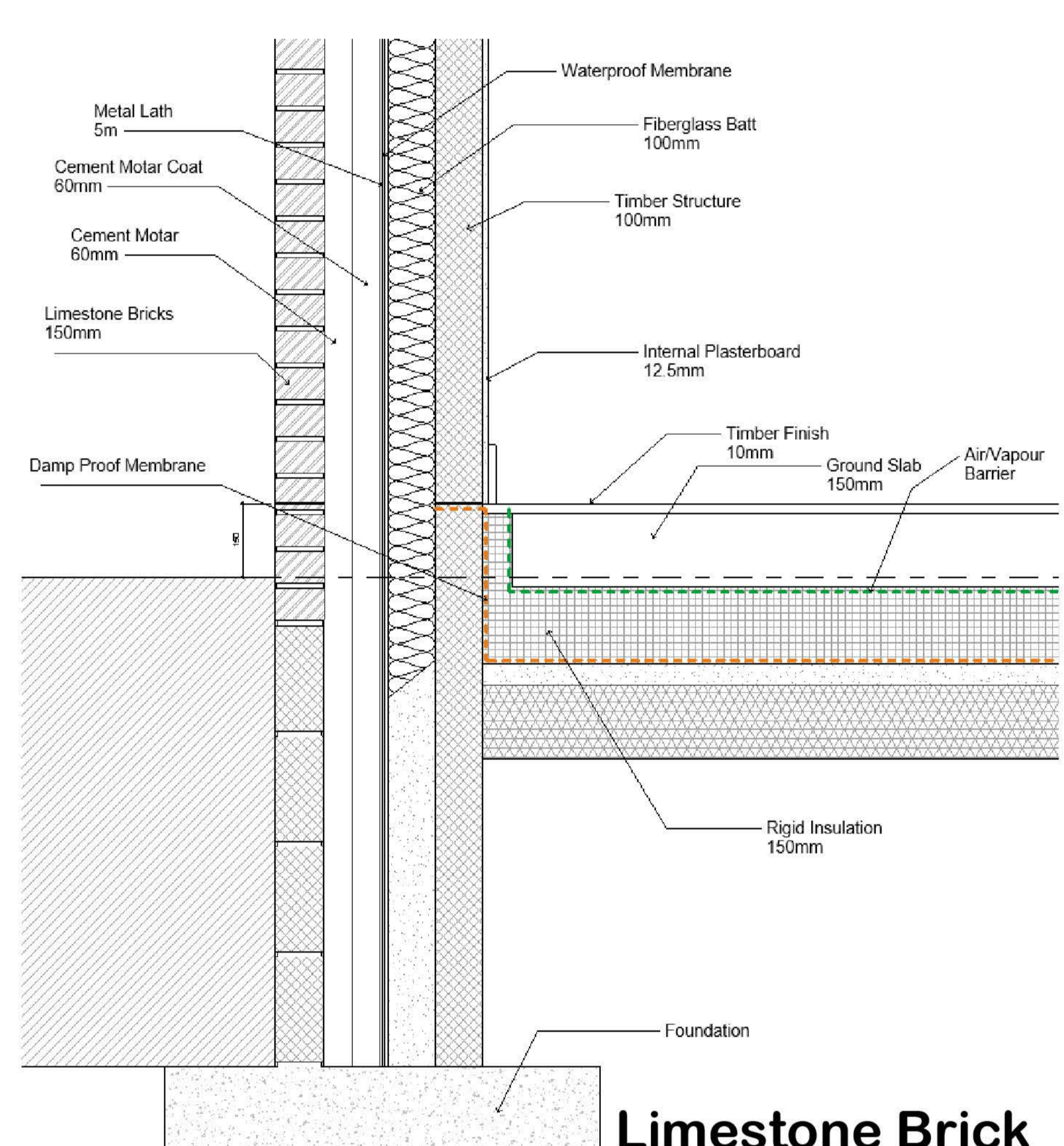
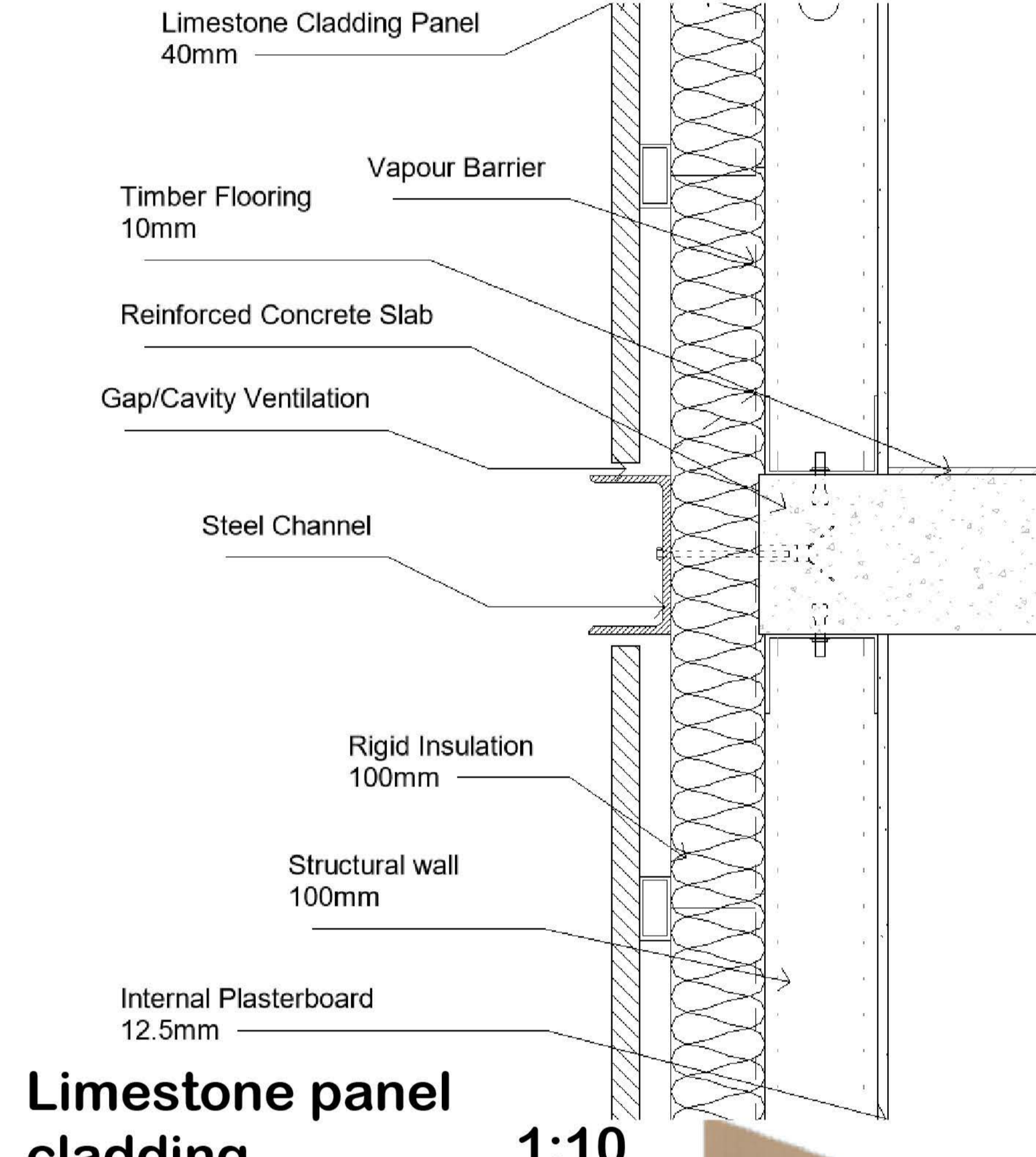
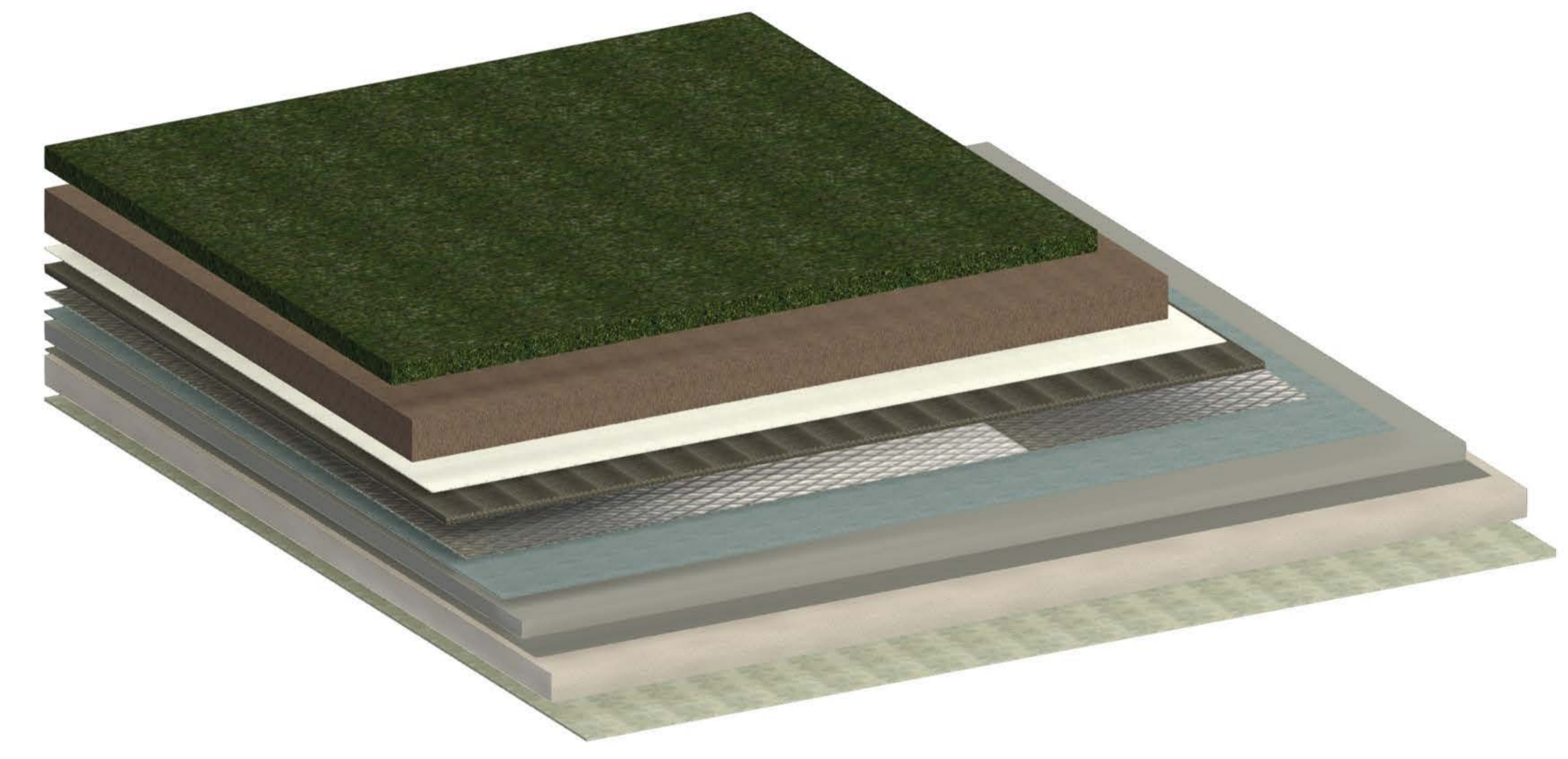
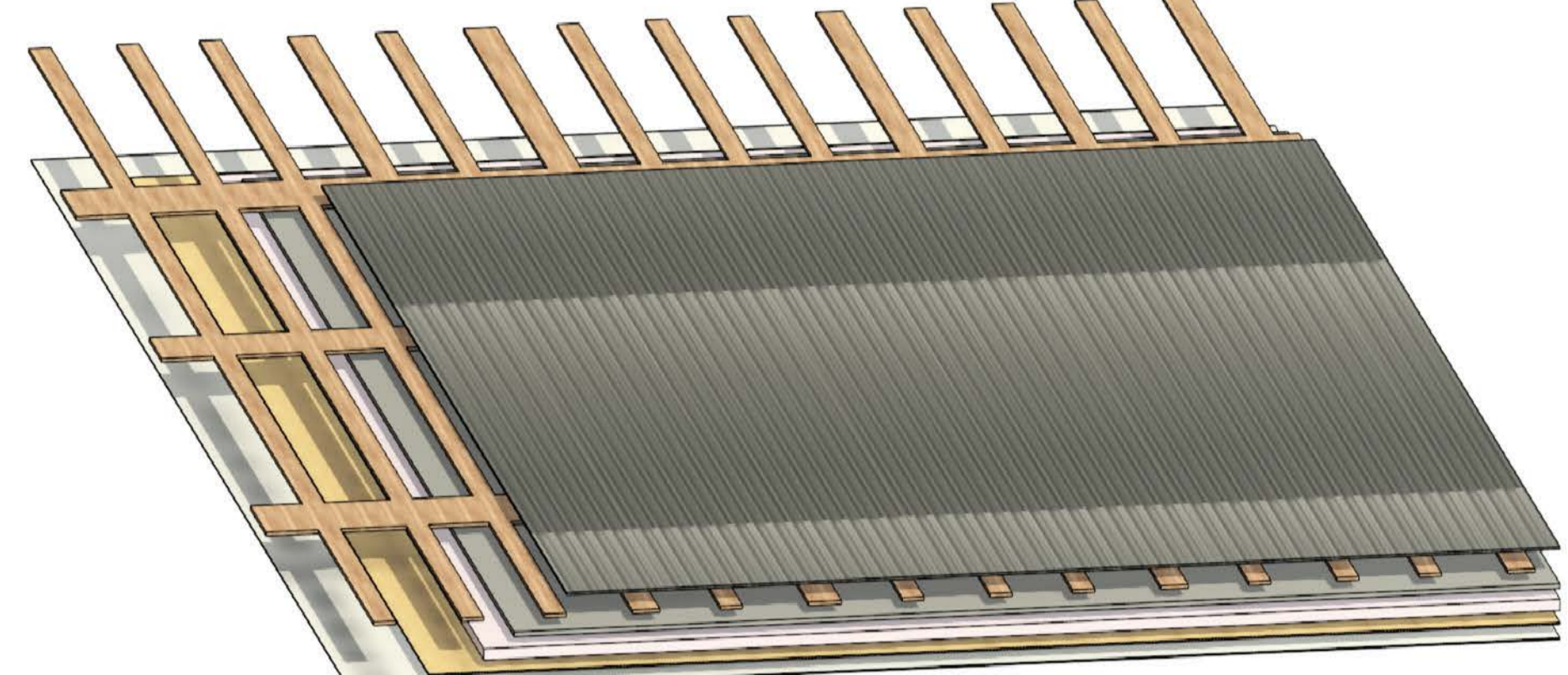
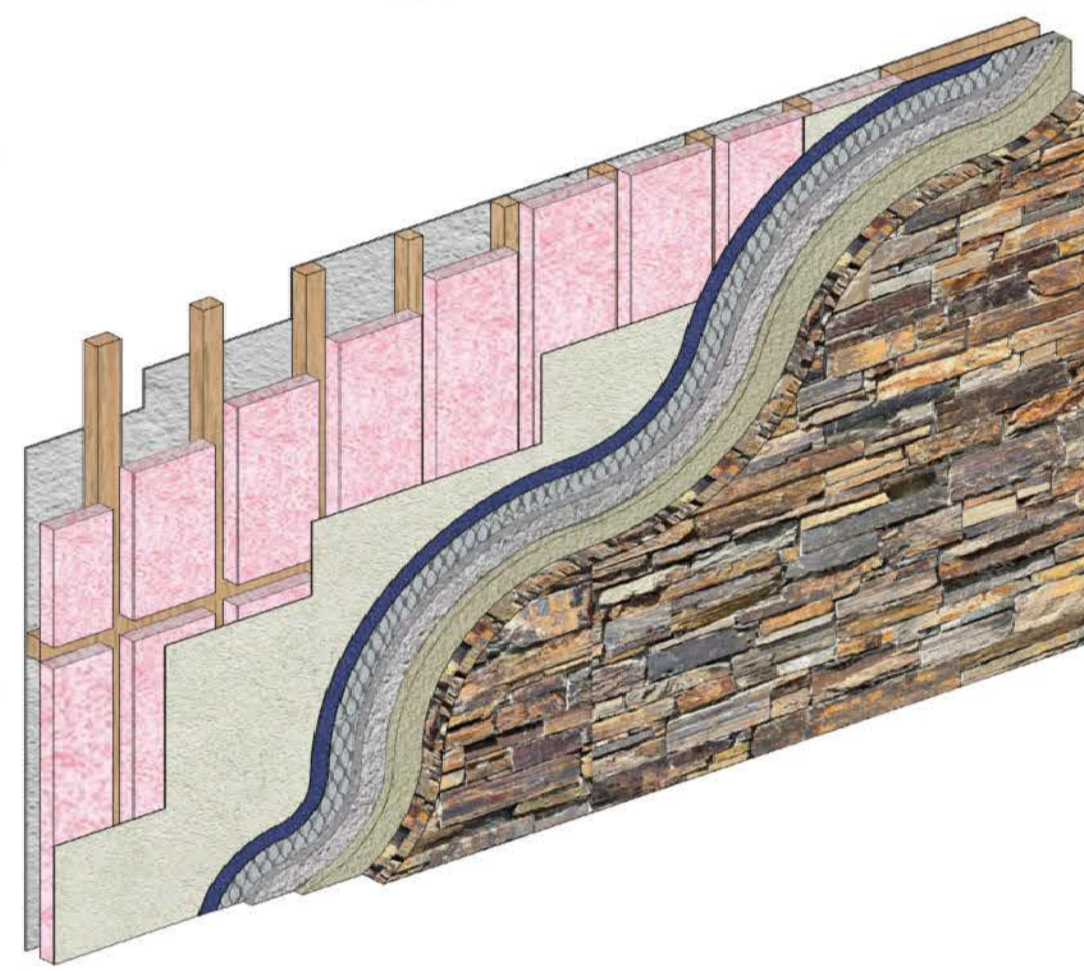
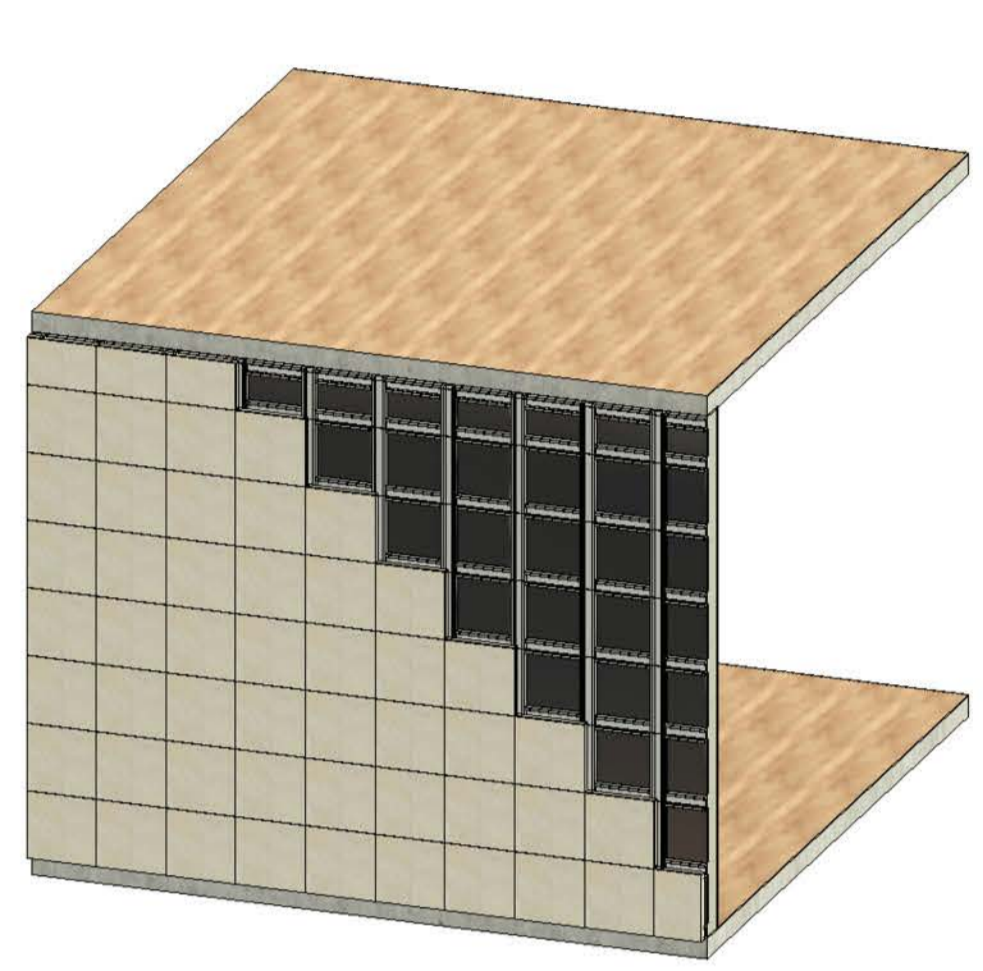
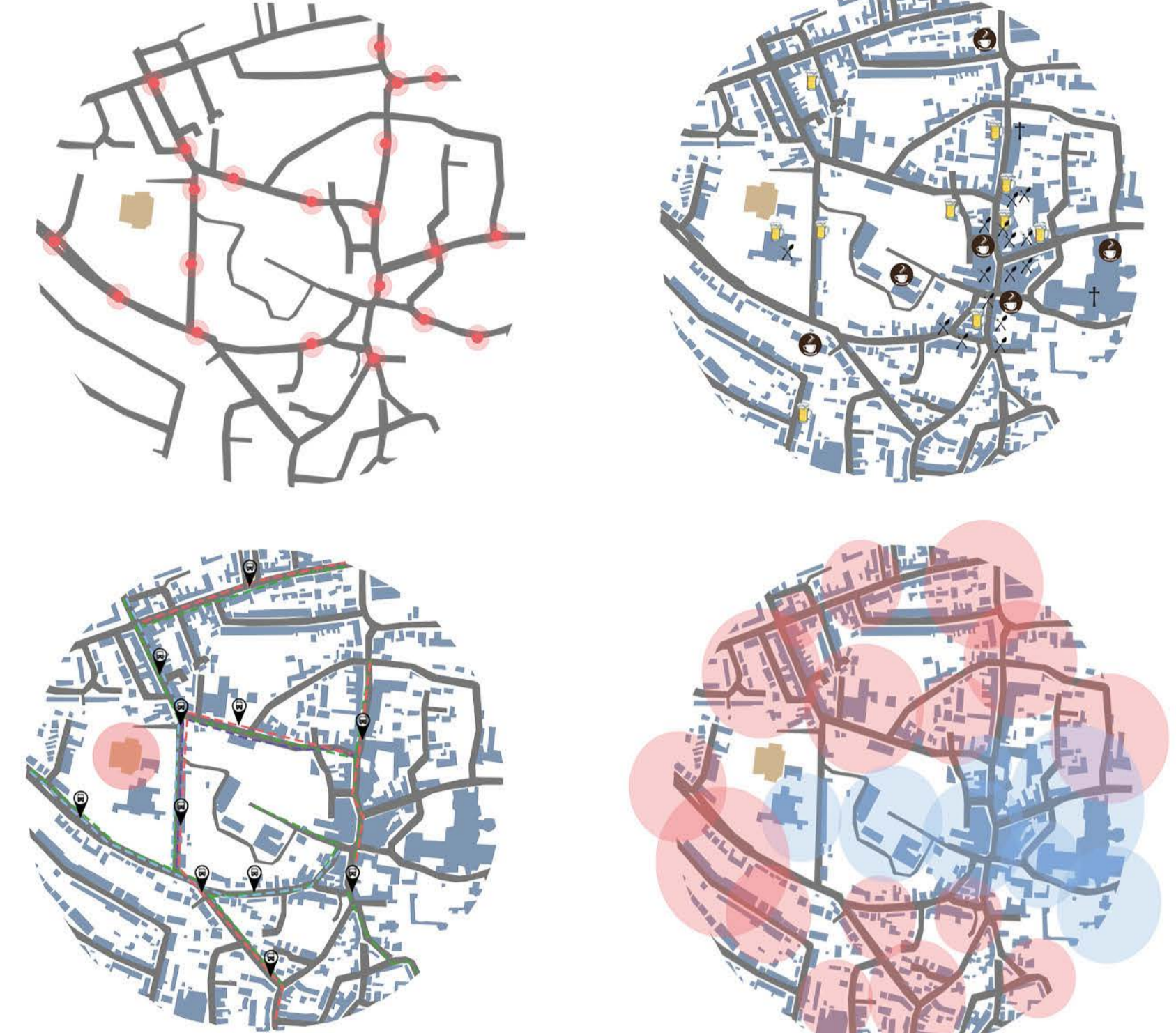
1:100

Community Centre

This project proposes an intergenerational community centre for a range of different users, with the primary focus being on the elderly and this design specifies for people living with dementia and young adults. The brief aims to create a space that stimulates socialisation, health and well-being, learning and having shared experiences between the two chosen clients. The site of this project is located in a historical area of Lincoln being The Lawn.

The intergenerational community centre has a vast variety of different spaces being cafe, library, souvenir shop, gym, garden spaces, greenhouse, spiritual spaces, therapy room, gallery and many activities on the second floor such as, cooking, baking, arts and crafts, sewing, embroidery, pottery and wood work. Incorporating different activities will engage the brain while also creating a space for interaction between the two different generations.

Technical Work



Net-Zero Strategies

