



# Mya Parslow

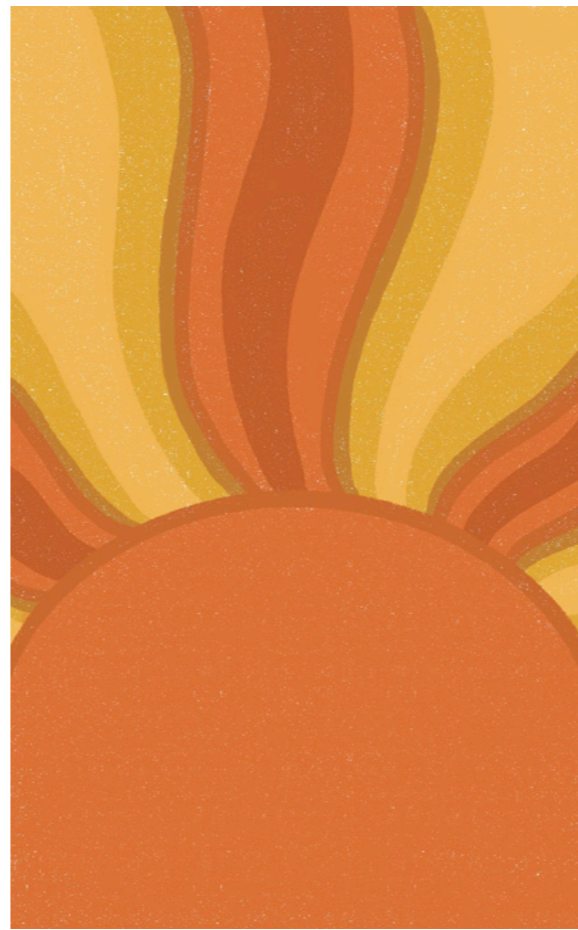
**Bold, textured illustration  
inspired by nature, pattern, and  
playful design.**

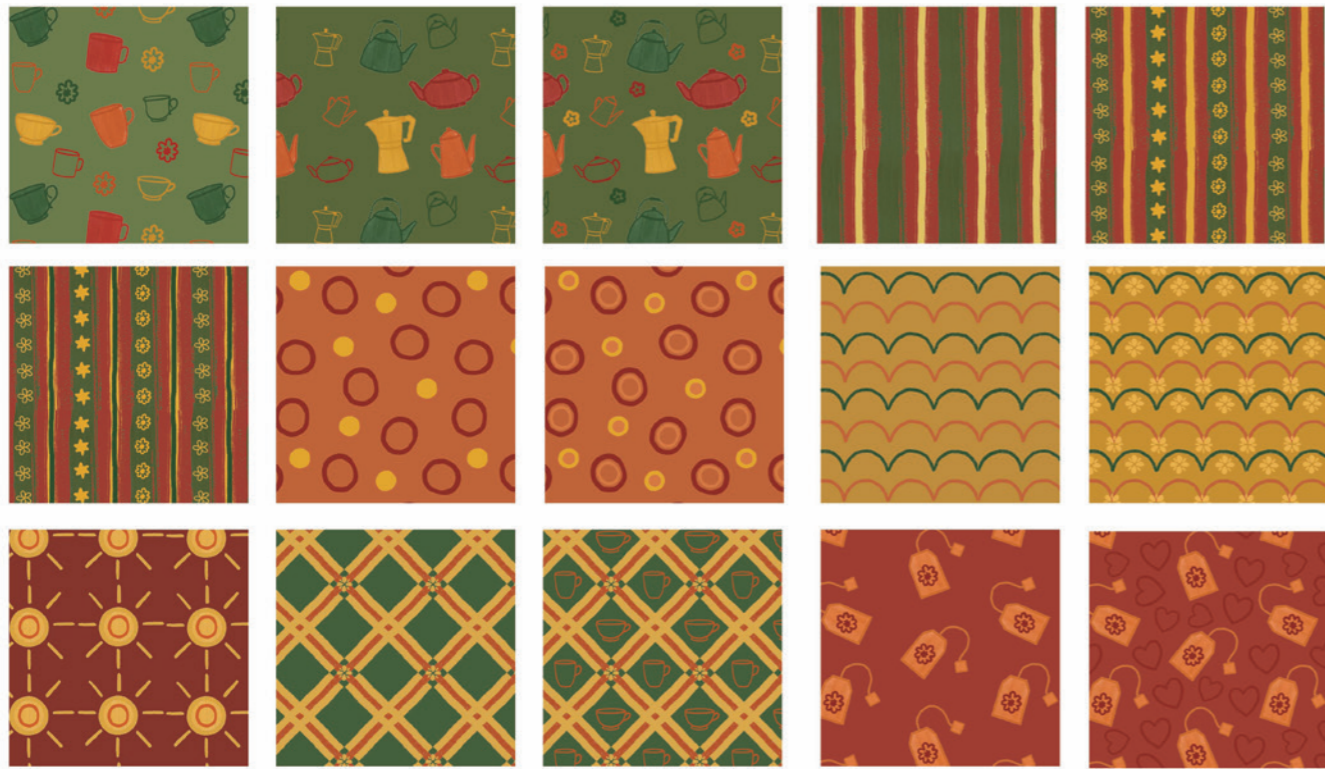


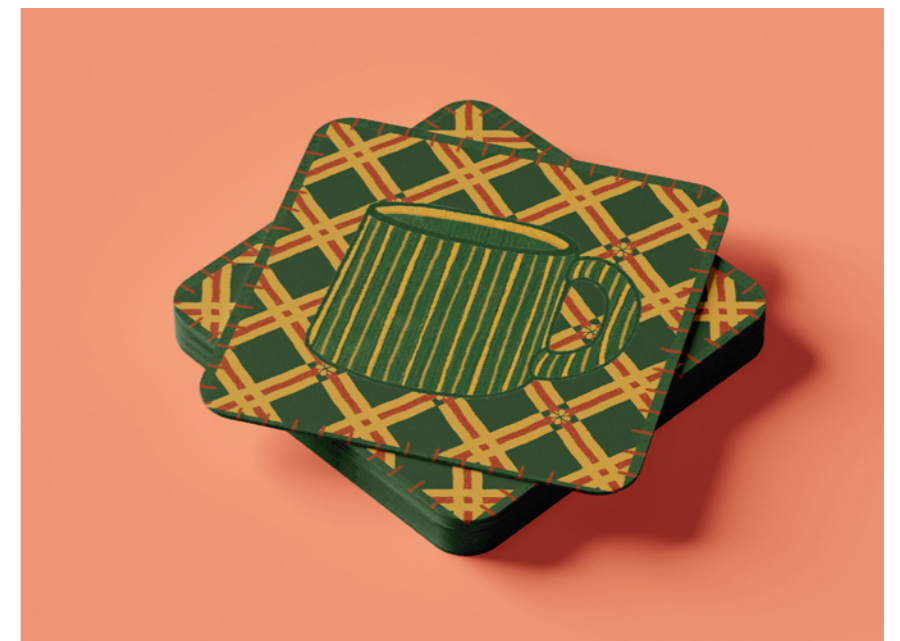
## 01: Take A Moment: A Cosy Living Packaging Range

Take a Moment is an illustrated packaging collection inspired by cosy living and the small rituals that bring comfort to everyday life. The range includes a tea tin, coffee pouch, biscuit tin and a set of coasters, each designed using warm palettes, hand-drawn textures and cosy-inspired patterns to create a tactile, inviting feel. The project focuses on tea and coffee break-time rituals, using illustration to celebrate slowing down and taking a moment for yourself. The final collection brings together narrative illustration and pattern design to create a cohesive, giftable lifestyle range.







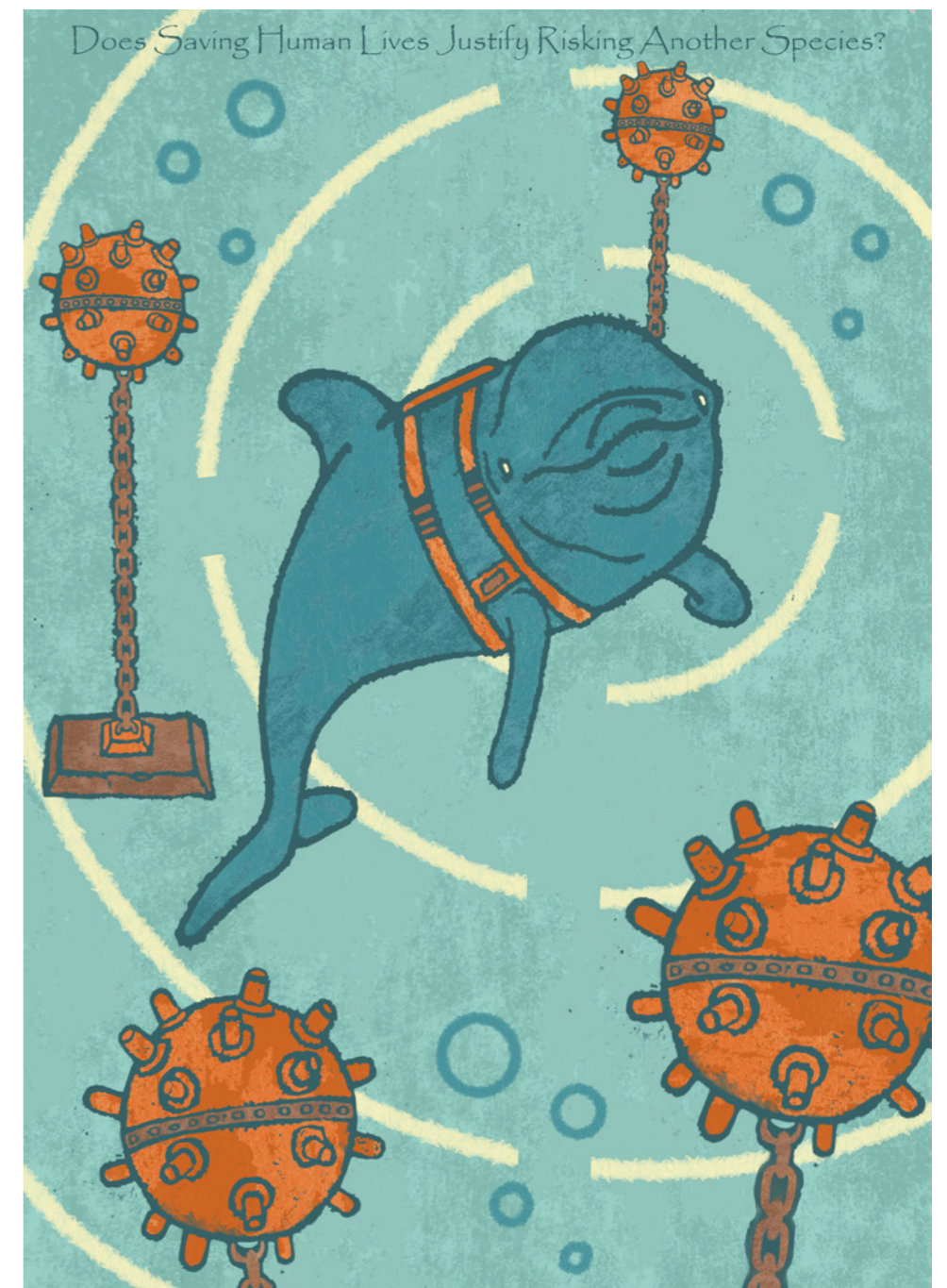




## 02: Bugs of All Nations

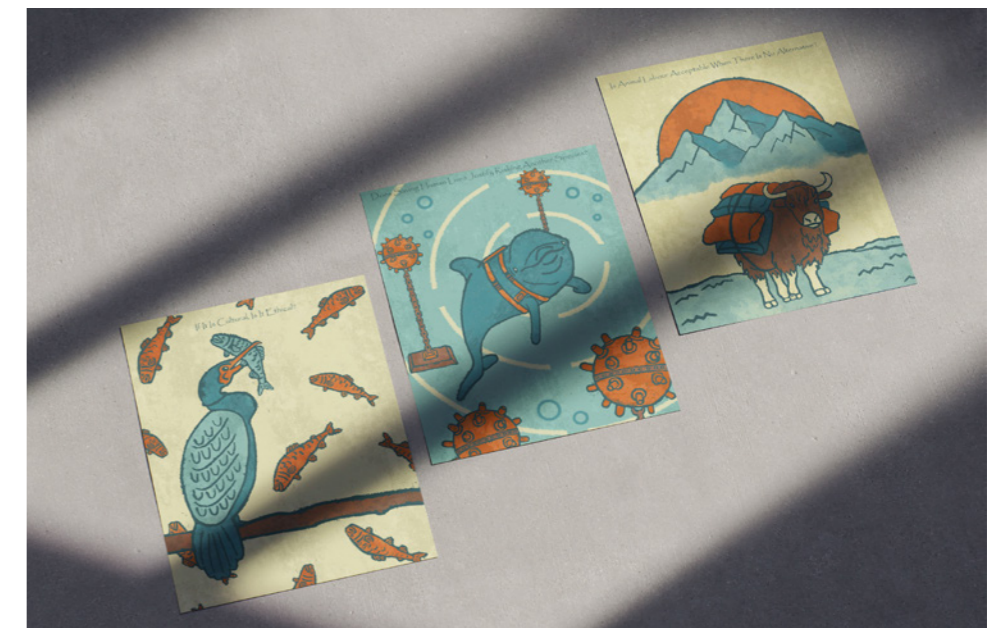
A data-driven editorial illustration translating the Cantril Ladder of Happiness dataset into an ensemble of stylised insects, each coloured using national flag palettes. The piece turns global wellbeing statistics into an engaging, approachable visual story.

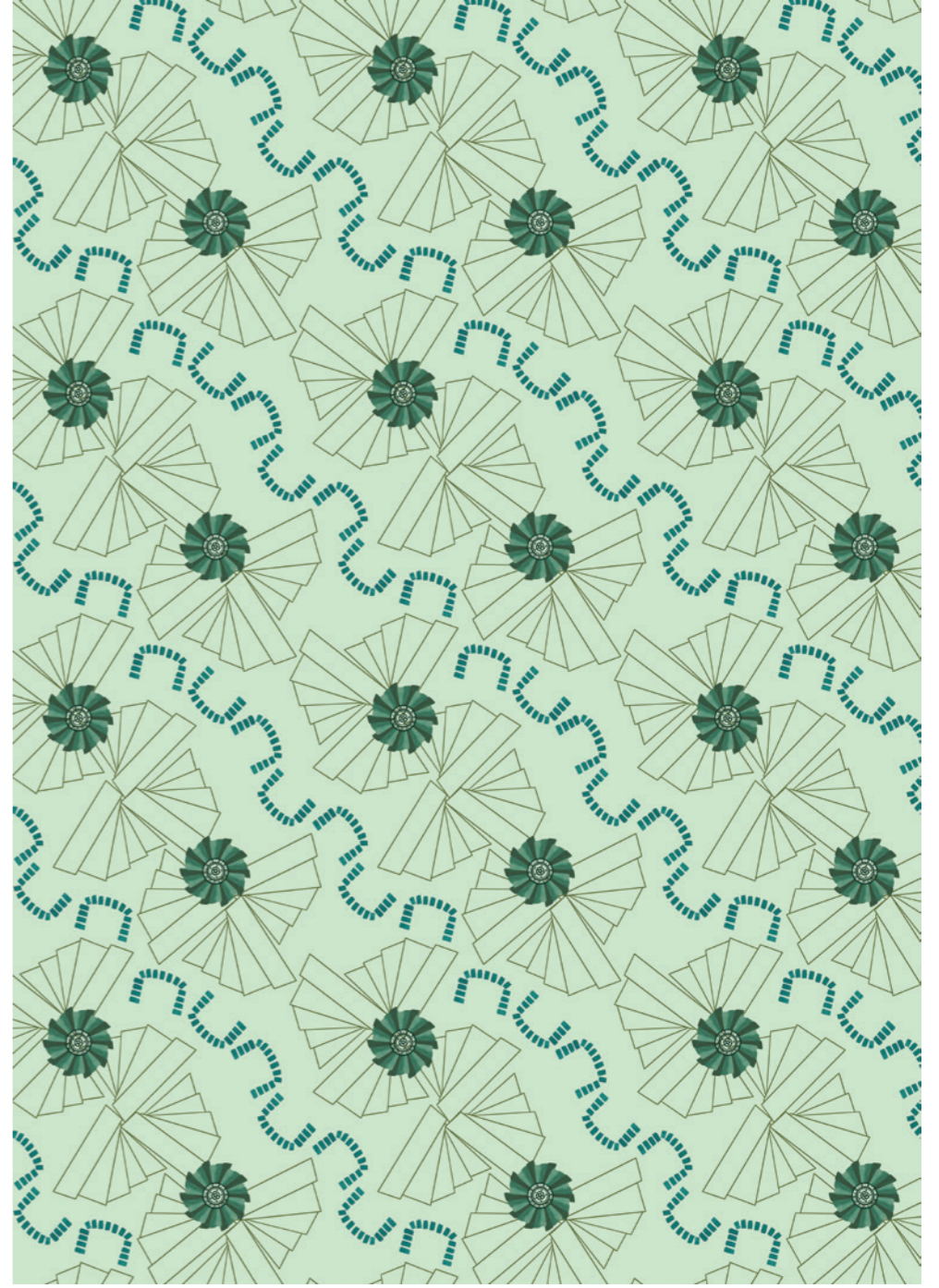




### 03: Ethical Futures

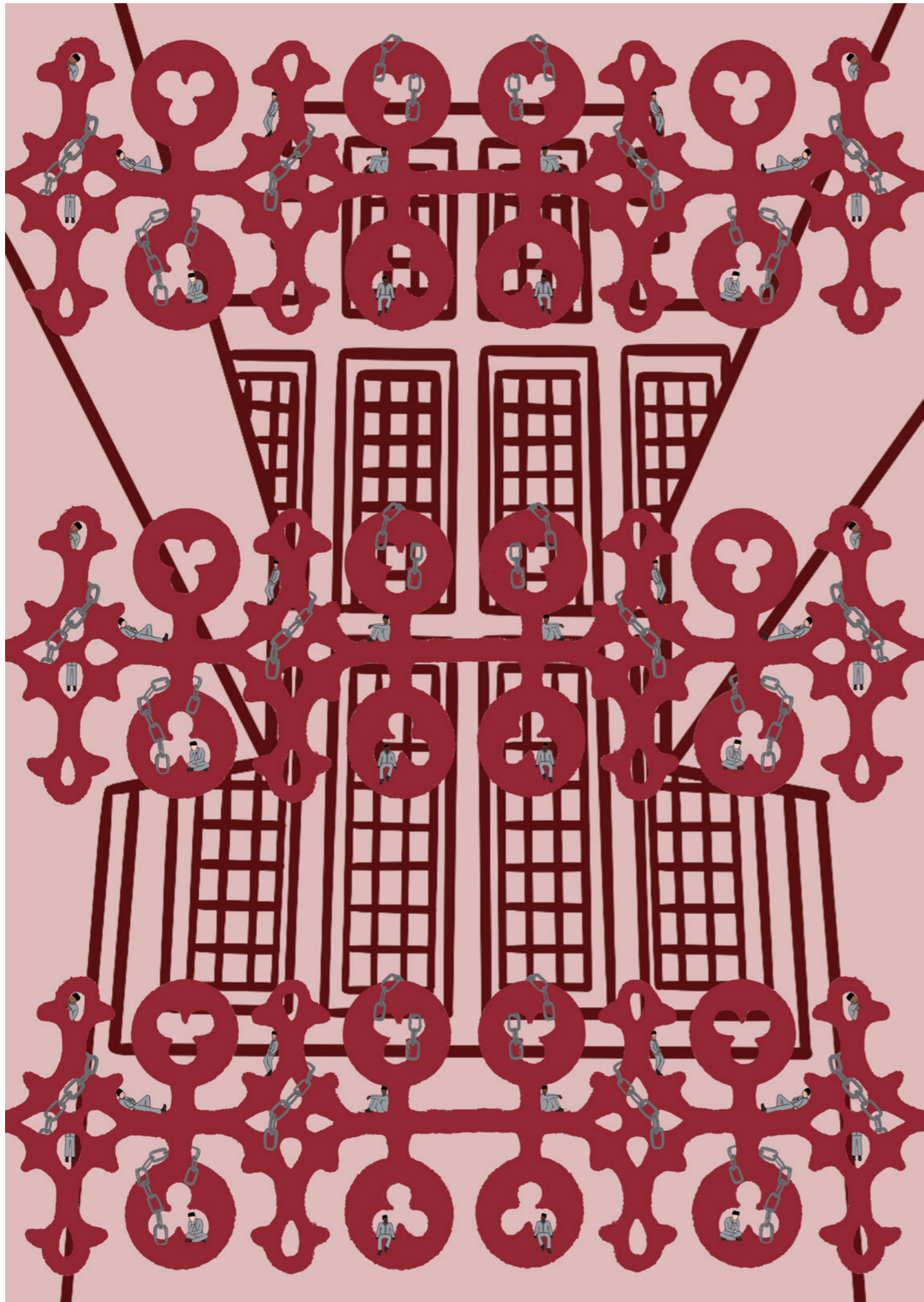
Ethical Futures is a series of three illustrations reflecting different debates surrounding animal labour. Each piece focuses on a specific ethical question, encouraging viewers to consider their thoughts on the topic and the future of human-animal relationships.



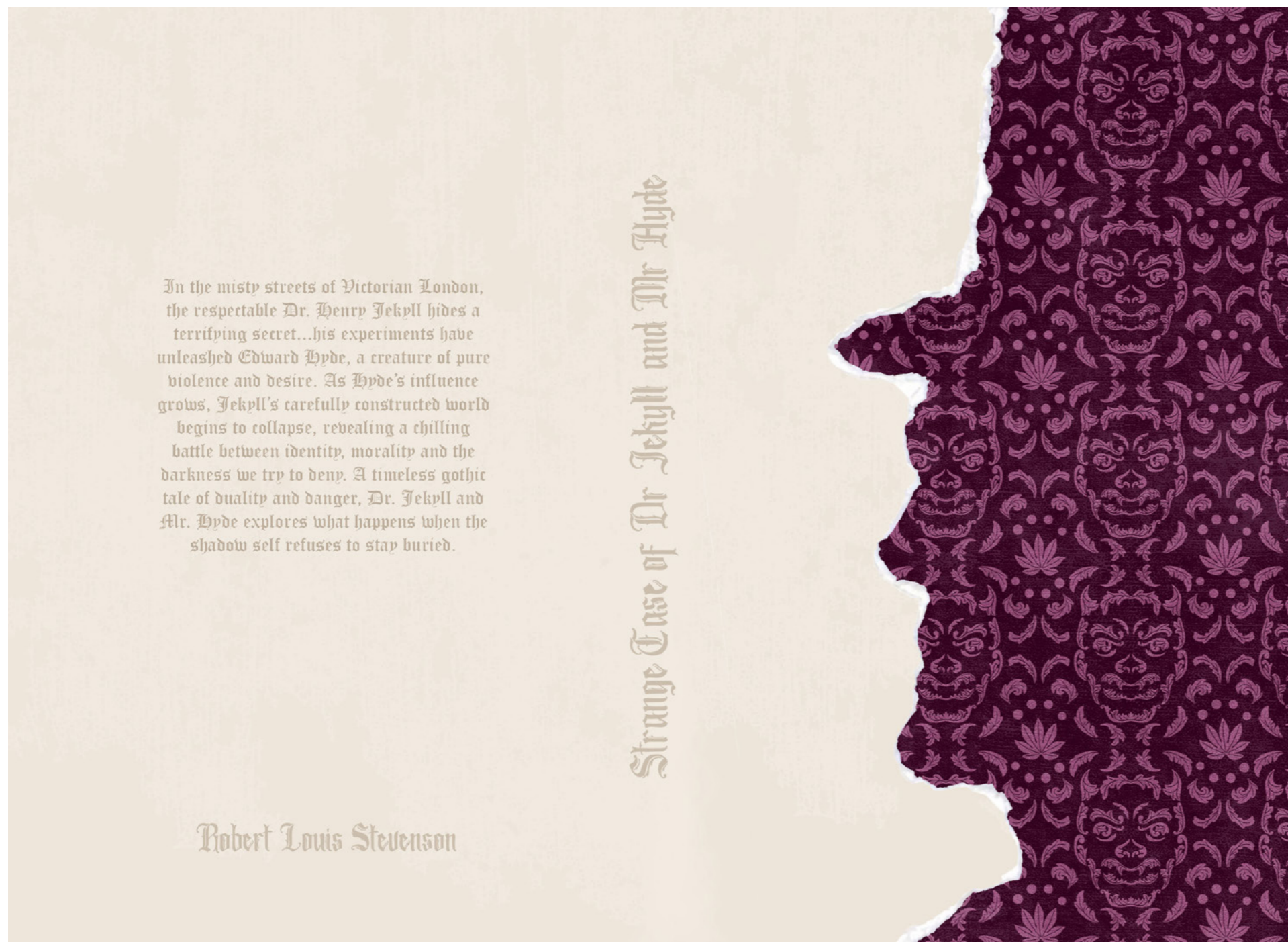


## 04: Lincoln Castle Pattern Collection

A pattern collection inspired by architectural and decorative motifs found throughout Lincoln Castle and its Victorian prison. The designs translate these details into contemporary, repeatable patterns suitable for gift shop products, blending heritage with modern illustration.



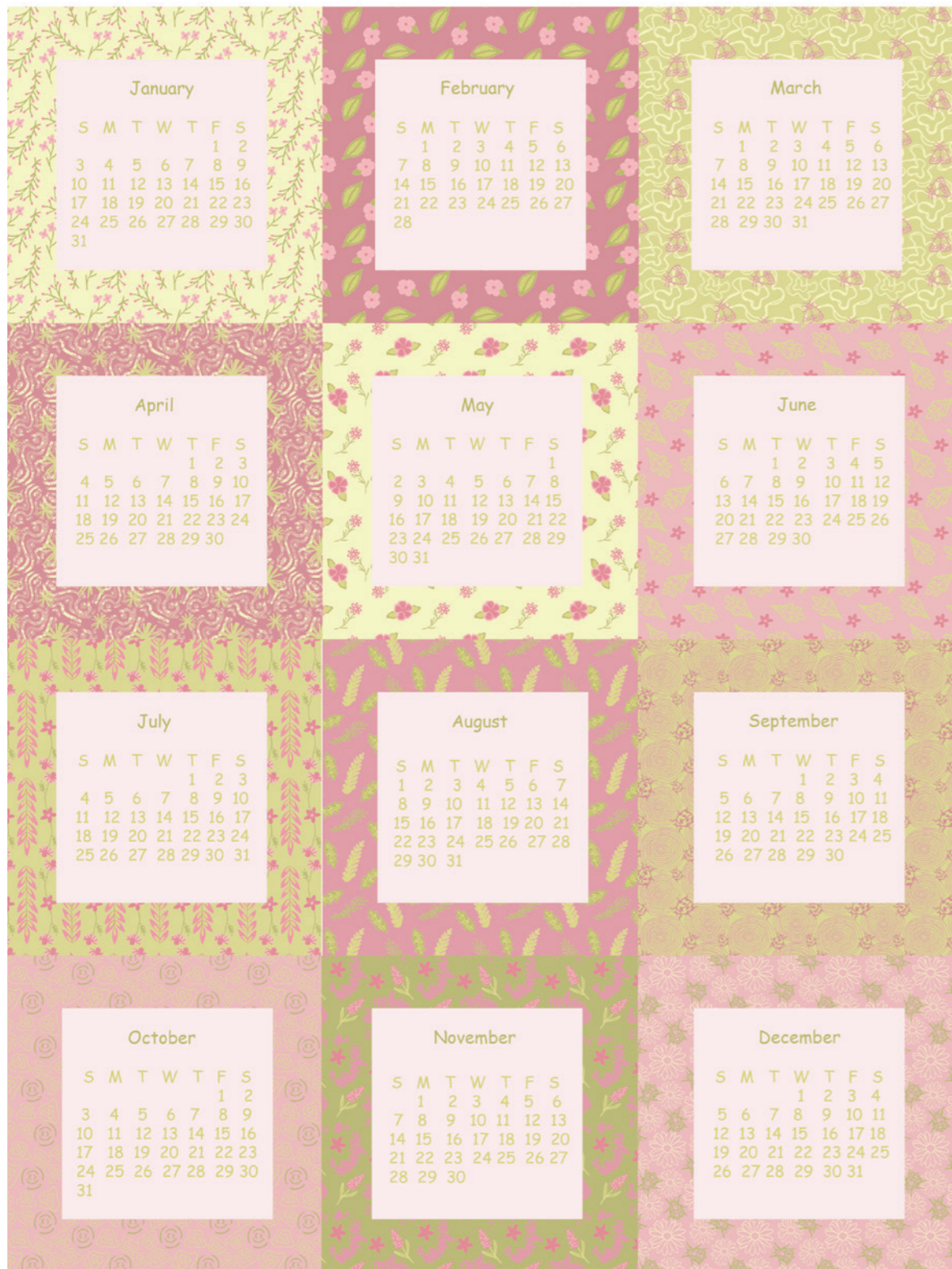




## 05: Reimagined Jekyll and Hyde Book Cover

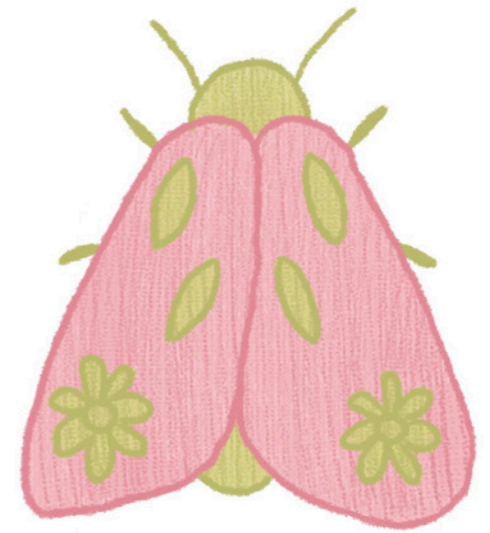
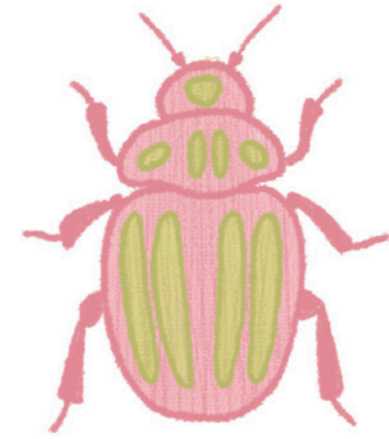
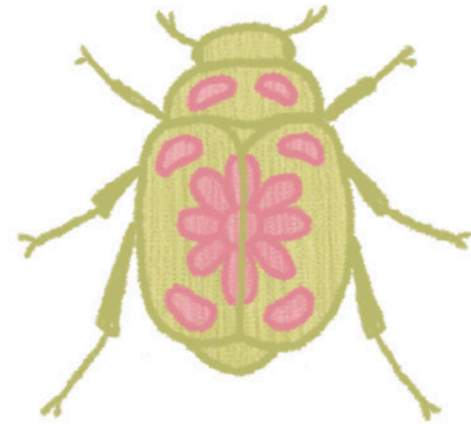
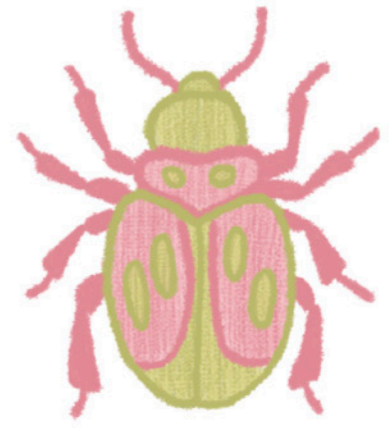
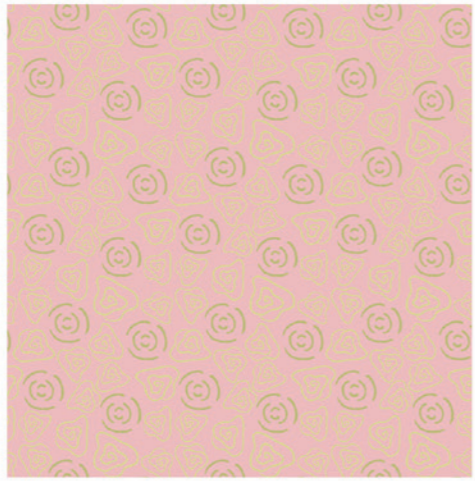
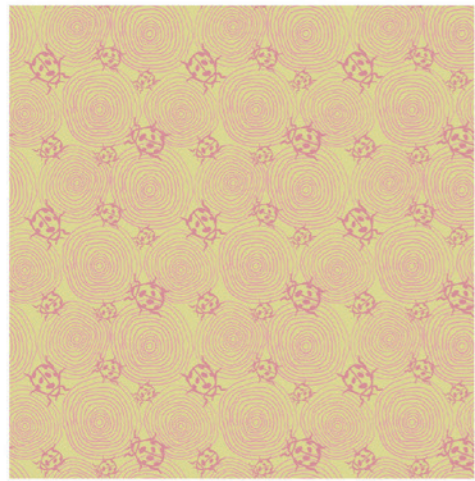
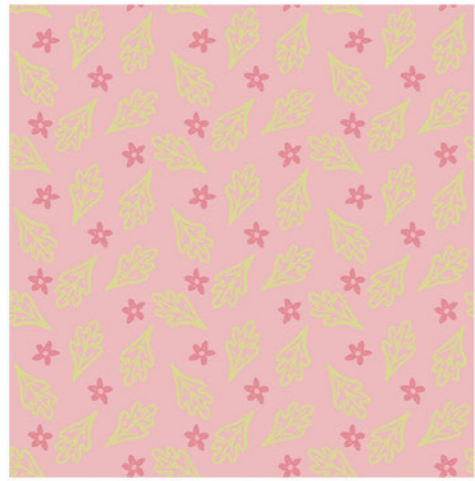
A contemporary reimagining of Jekyll and Hyde that uses a patterned silhouette to express the novel's central theme of duality. The ornamental motifs blend elegance with unease, hinting at Hyde's presence beneath Jekyll's respectability, while the minimal layout keeps the focus on the psychological tension at the heart of the story.

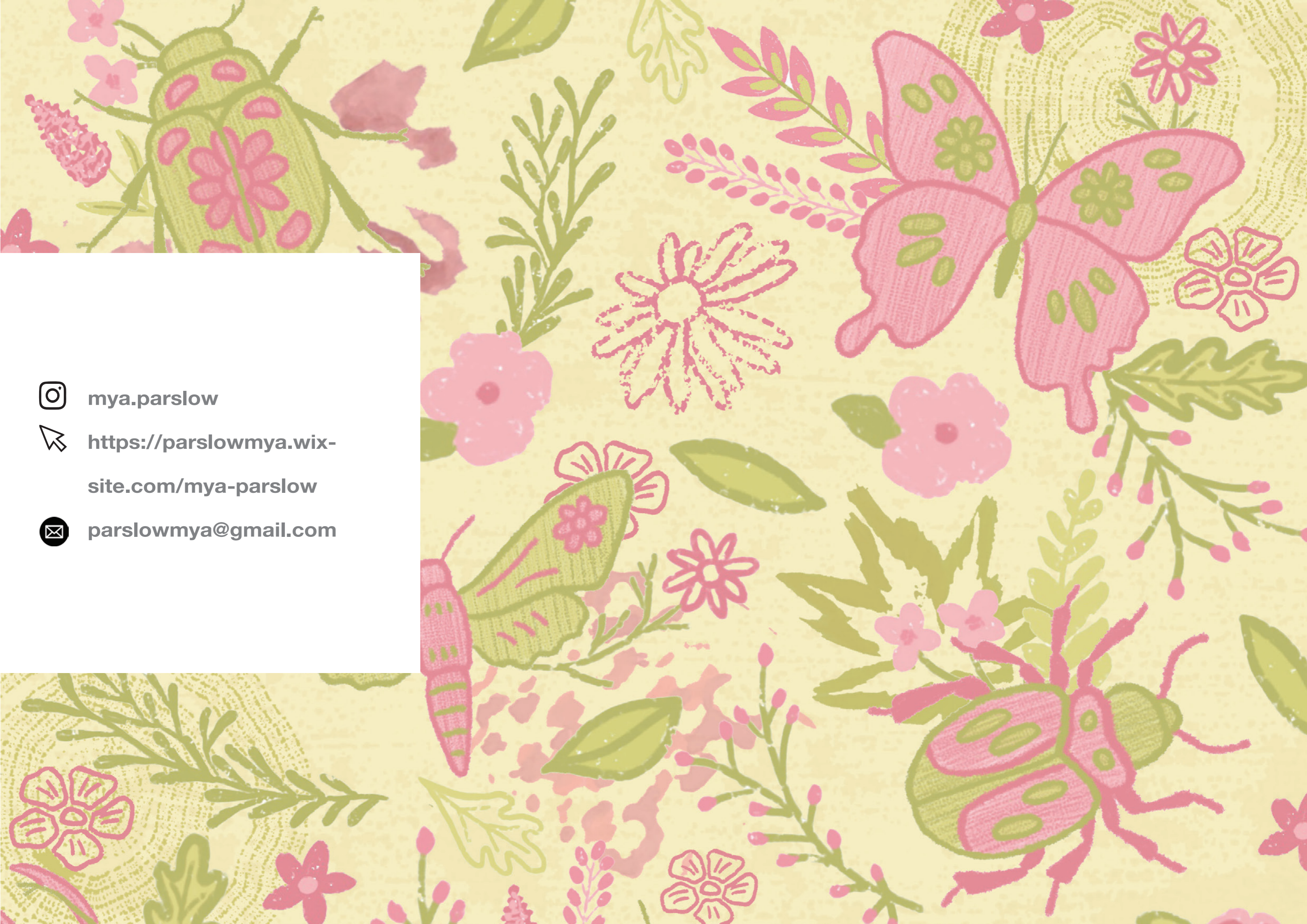




## 06: Desk Calendar

A desk calendar design to reflect my personal brand's signature of patterns found in nature, combining analogue mark-making with layered digital illustration to create a tactile, organic visual language.





mya.parslow



<https://parslowmya.wix-site.com/mya-parslow>



[parslowmya@gmail.com](mailto:parslowmya@gmail.com)