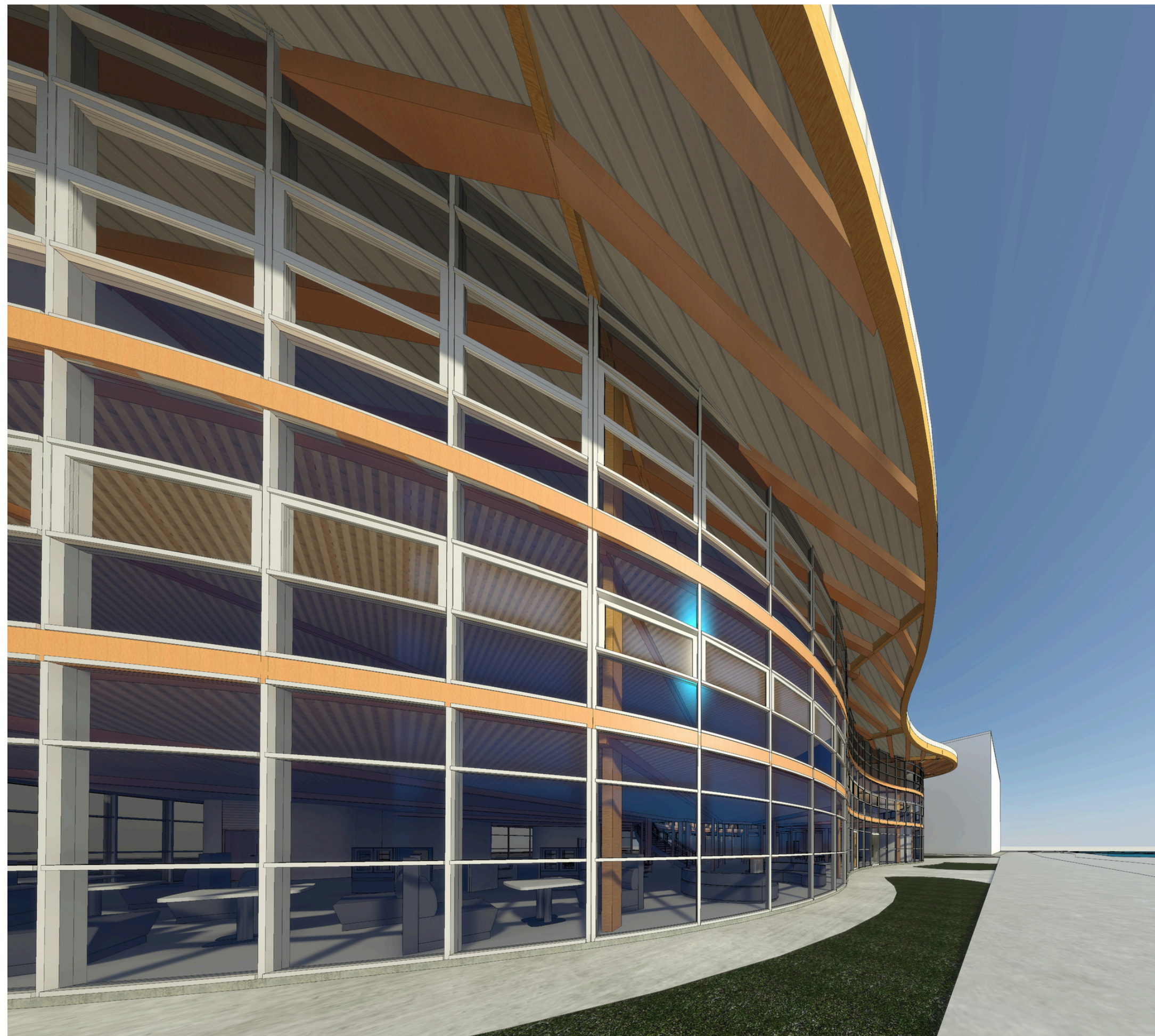


THE REMEMBRANCE CENTRE



HISTORICAL CONTEXT



1141 After the Norman conquest, William the Conqueror built Lincoln Castle to control the area. It was the site of the great Battle of Lincoln in 1141 where King Stephen was captured by the English crown. The castle was destroyed during the English Civil War when it was burnt down by Cromwell's forces in 1645.

1915 In 1915, Lincoln-based agricultural engineering firm William Foster & Co. created the world's first fighting tank, the city of Lincoln became known as 'Tank Country' as hundreds of tanks were manufactured here during the war. The Lincolnshire Regiment formed in 1881. This infantry unit saw extensive service in WW1, with its regular battalions fighting on the Western Front. More than 4000 men from the regiment lost their lives.

1942 Due to its flat terrain and coastal location, Lincolnshire was ideal site for airfields. The county became known as the 'Bombing Country' housing dozens of airfields and tens of thousands of personnel. RAF Scampton, north of Lincoln, was the base for the legendary Dambusters' Squadron, which carried out the famous Operation Chastise raid in 1943.

1945 After WW2, bases in Lincolnshire continued to be used for aviation, with RAF Coningsby housing the RAF's first jet fighters, the Spitfires. The RAF's first jet fighters, the Spitfires, were based at RAF Coningsby, north of Lincoln, from 1945 to 1955. The RAF's first jet fighters, the Spitfires, were based at RAF Coningsby, north of Lincoln, from 1945 to 1955.

1952 Modern RAF presence: The county remains a centre for aviation, with RAF Coningsby housing the RAF's first jet fighters, the Spitfires. The RAF's first jet fighters, the Spitfires, were based at RAF Coningsby, north of Lincoln, from 1945 to 1955.

LOSS OF FAMILIAR NETWORKS/ HOME SICKNESS

DIFFICULTY TO CIVILIAN LIFE



TRAUMA

DIFFICULTY FINDING PURPOSE



ACADEMIC PRESSURE

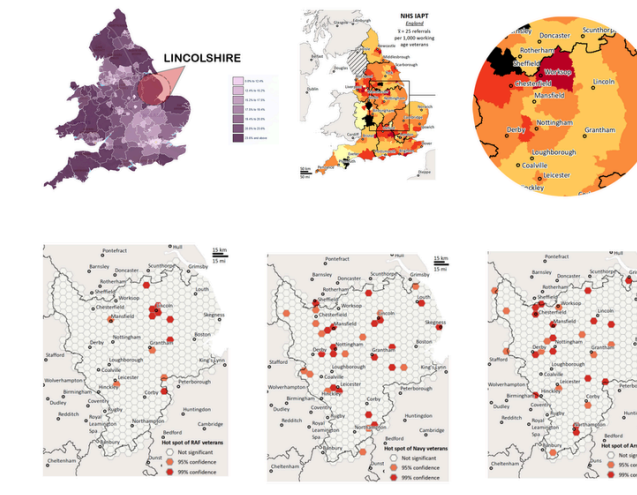
SUBSTANCE ADDICTION



ACADEMIC PRESSURE

THE REMEMBRANCE CENTRE IN LINCOLN IS AN INTERGENERATIONAL COMMUNITY CENTRE THAT BRINGS TOGETHER ELDERLY VETERANS AND STUDENTS. BOTH GROUPS FACE BIG TRANSITIONS IN LIFE; VETERANS HAVE KNOWN SERVICE, SACRIFICE, AND SOMETIMES TRAUMA, AND STUDENTS ARE NAVIGATING THE CHALLENGES OF BECOMING ADULTS. THIS CENTRE GIVES THESE FOLKS A SPACE TO COME TOGETHER, REMEMBER, LEARN, AND SUPPORT ONE ANOTHER. ITS DESIGN IS SPECIAL, DRAWING INSPIRATION FROM BOTH THE REMEMBRANCE POPPY AND THE WINGS OF RAF PLANES – FITTING FOR A CITY WITH SUCH DEEP AVIATION ROOTS. THE BUILDING'S LAYOUT MIMICS A POPPY, WITH SPACES SPREADING OUT FROM A MAIN HUB THAT'S USED FOR GATHERINGS. IT STANDS AS A REMINDER OF REMEMBRANCE, GROWTH, HEALING, AND RENEWAL. AND THEN THERE IS THE ROOF – IT SWOOPS LIKE THE WINGS OF RAF PLANES, SIGNIFYING PROTECTION, AND FREEDOM, WHICH ARE IMPORTANT TO LINCOLN'S HISTORY. THIS CENTRE HAS SPACES FOR EXHIBITIONS, GALLERIES, AND WORKSHOPS, PLUS AREAS THAT HELP VETERANS BY LETTING THEM SHARE THEIR STORIES AND KEEP VALUABLE MEMORIES. STUDENTS GET TO LEARN AND VOLUNTEER TOO, PICKING UP EXPERIENCE AND FORMING REAL CONNECTIONS. WORKING TOGETHER, THESE SPOTS BATTLE LONELINESS AND ISOLATION, BOOST WELL-BEING, AND BRIDGE GENERATION GAPS – ALL WHILE LEAVING A LASTING COMMUNITY IMPACT.

VETERAN STATISTICS



SITE ARTIFACTS

Museum of Lincolnshire Life
Contains "Daphne" an authentic WW1 Mark IV tank built in Lincoln, along with exhibits.

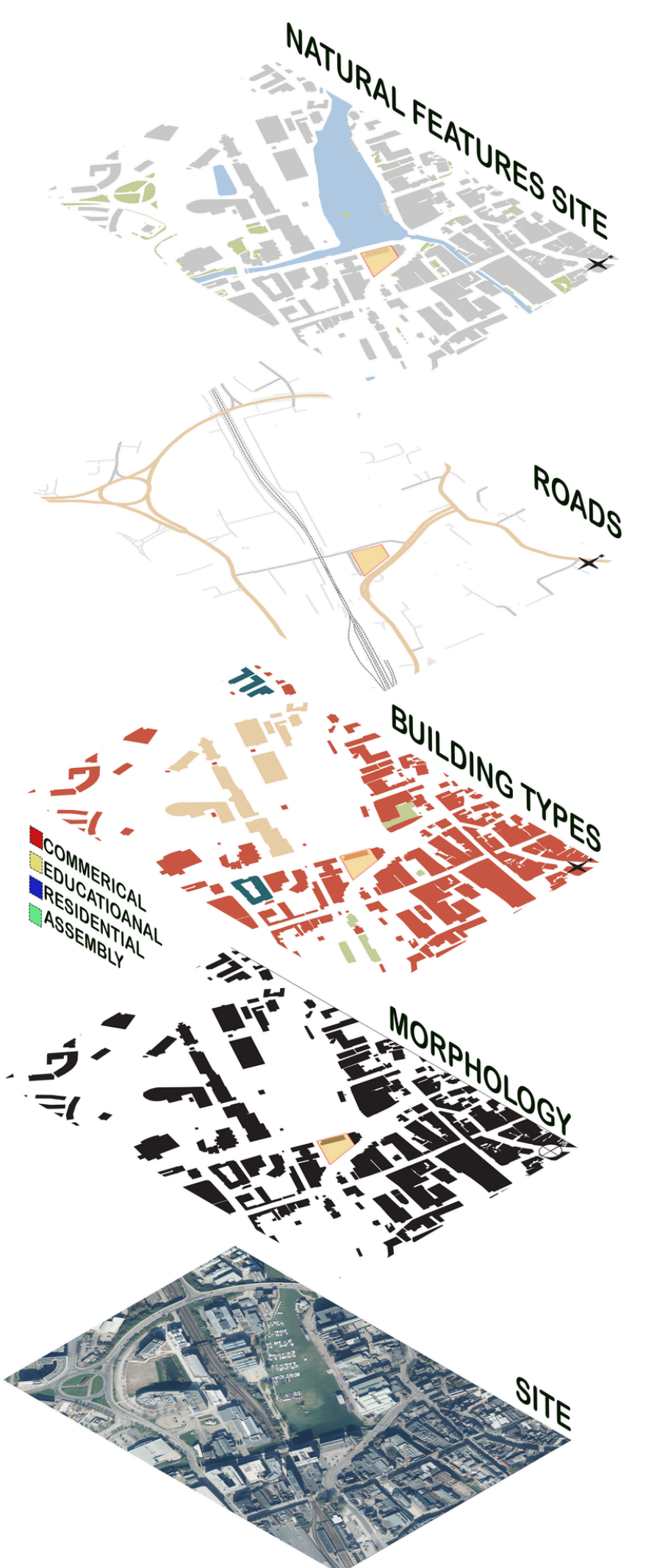
Lincoln Castle
William the Conqueror built the castle in 1068, just two years after the Norman conquest. Its construction was a religious strategy to control the rebellious northern part of England. Situated on a hilltop overlooking the city, the castle served as a constant reminder to the local Anglo-Saxon population of Norman authority and military might.

Lincoln Tank Memorial
Found on the Triton Road roundabout, this memorial commemorates the city's significant role in developing the tank during WW1.

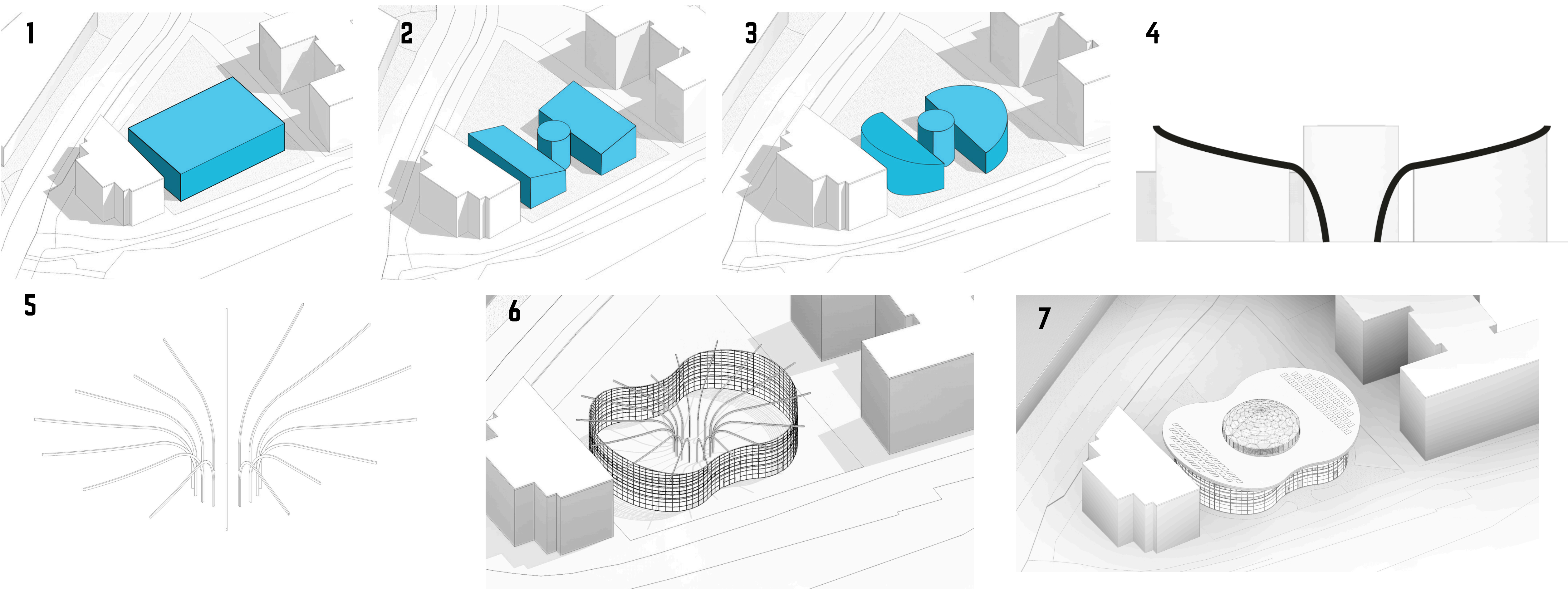
Lincoln Museum
The Collection's arms and armour collection contains examples of armour and weaponry from Britain and Europe from the 16th to the 20th Centuries.

St Benedict's Square, off High Street
Lincoln's War Memorial situated in the centre of Lincoln, off the High Street. It is situated next to the Church of St. Benedict. The memorial was unveiled in 1922 and is a large cross inscribed with the names of local men and women who gave their lives in both World Wars.

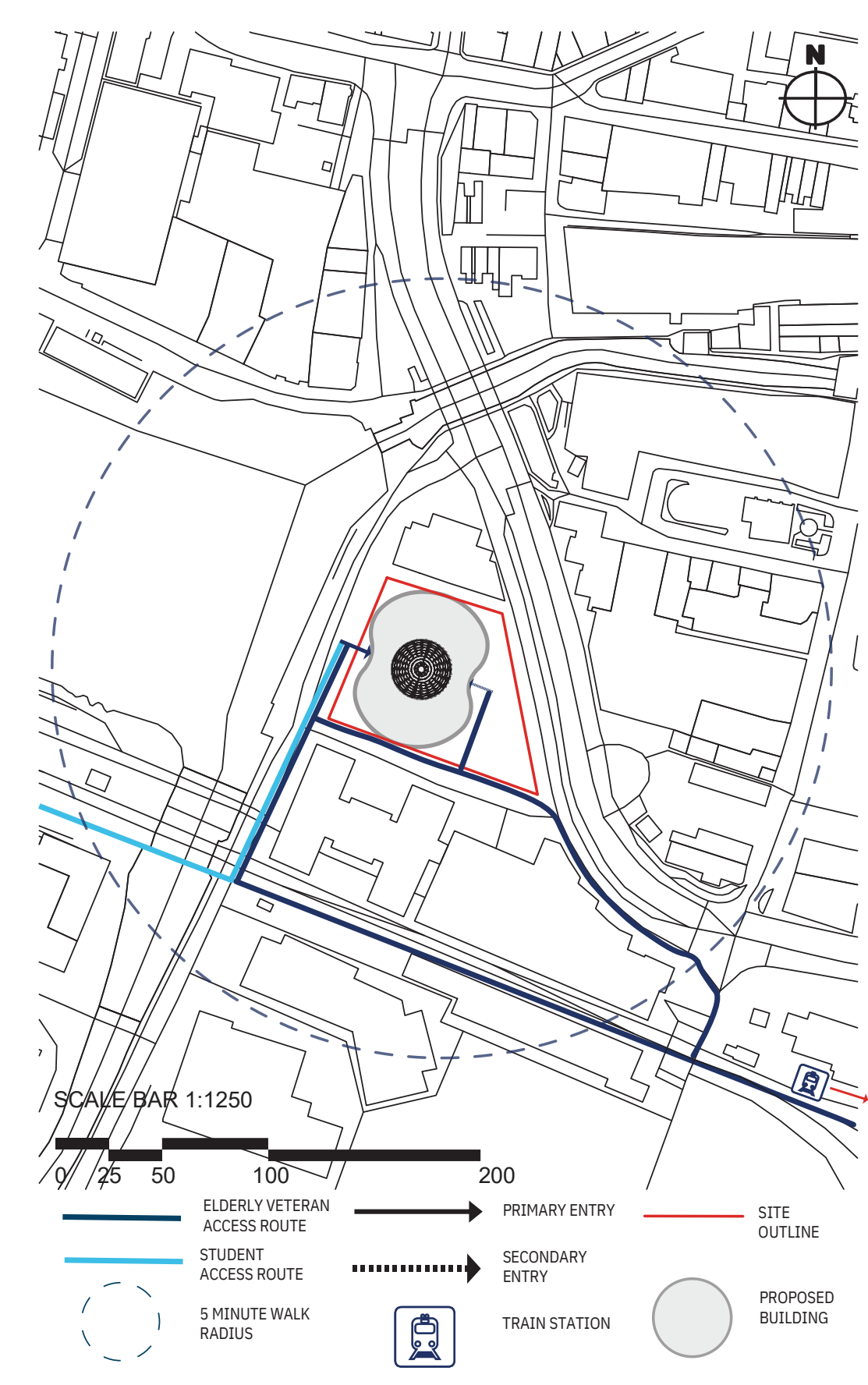
IBBC
Located south of the city, this site includes the Memorial Spire, which aligns with Lincoln Cathedral. It commemorates the service and sacrifice of Bomber Command personnel on the Royal Lincolnshire Regiment.



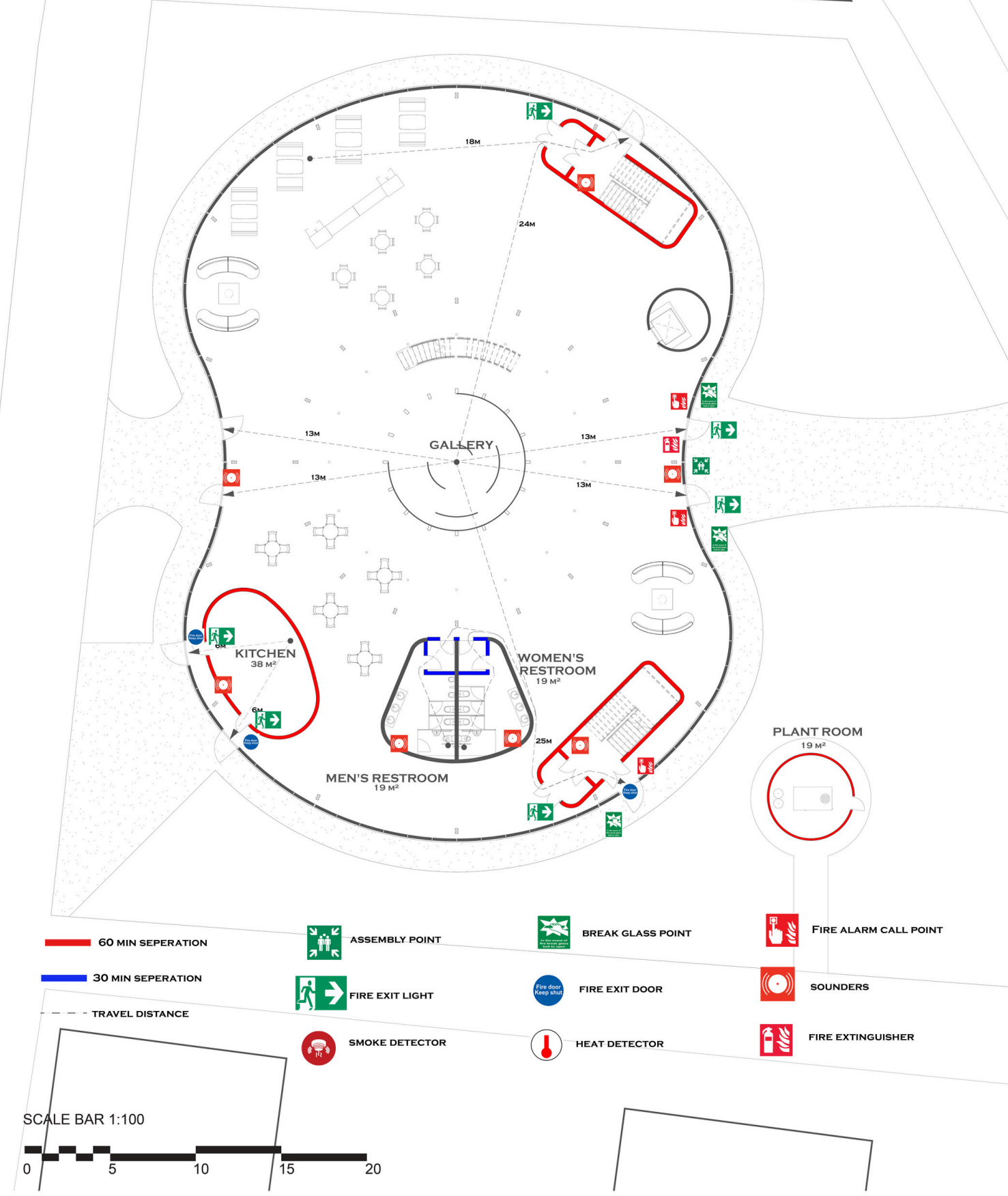
MASSING DEVELOPMENT



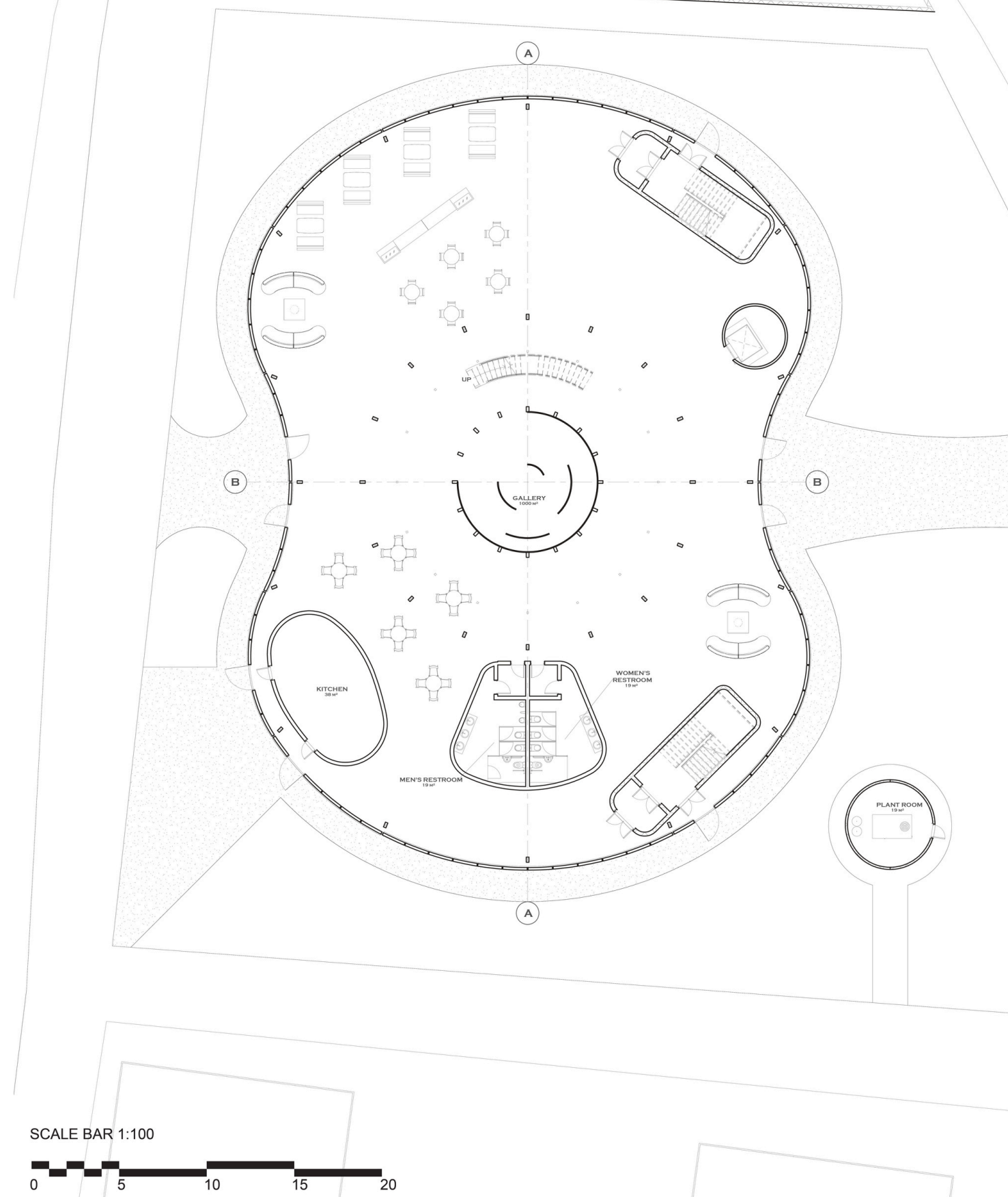
SITE ACCESS PLAN



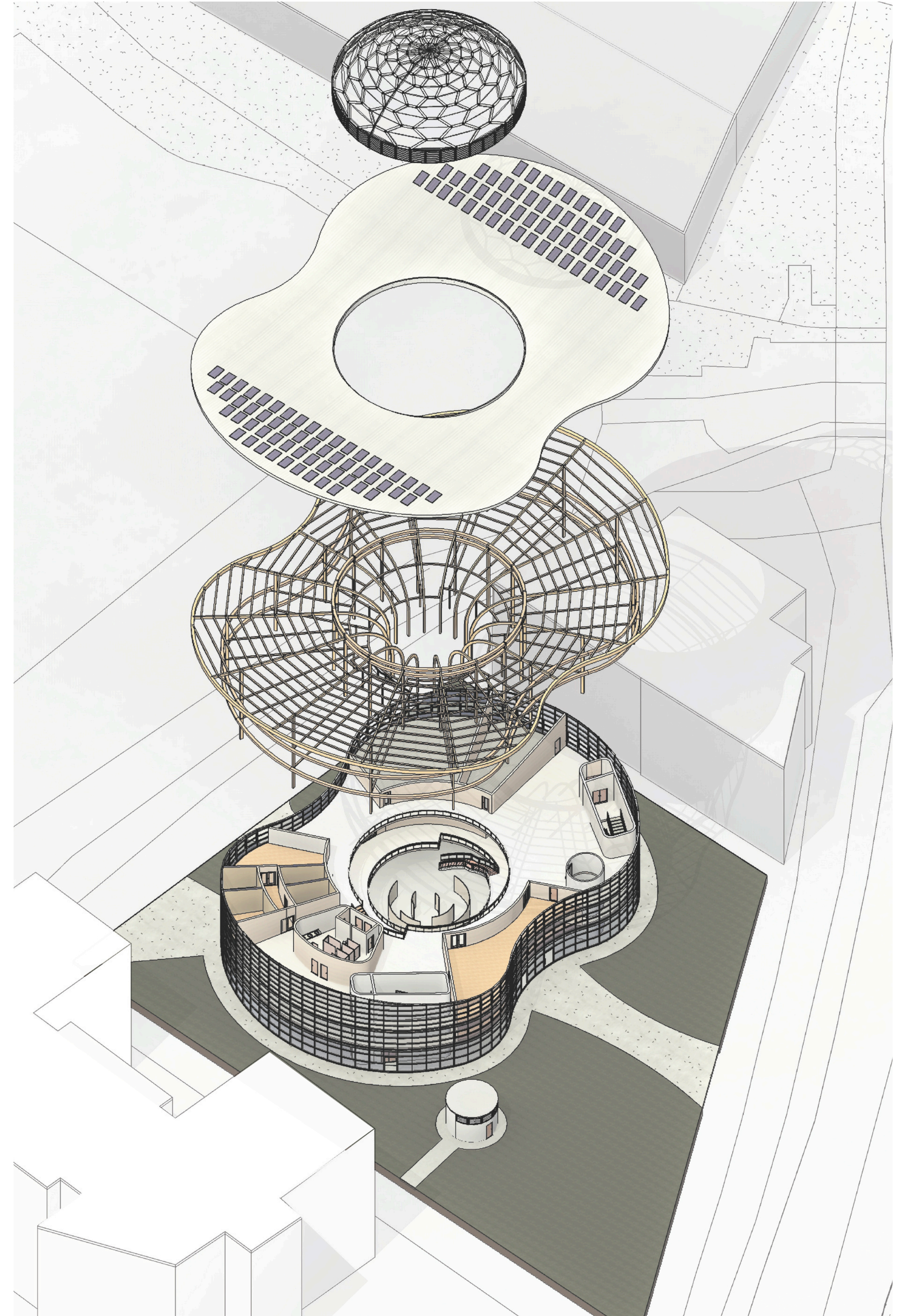
GROUND FLOOR



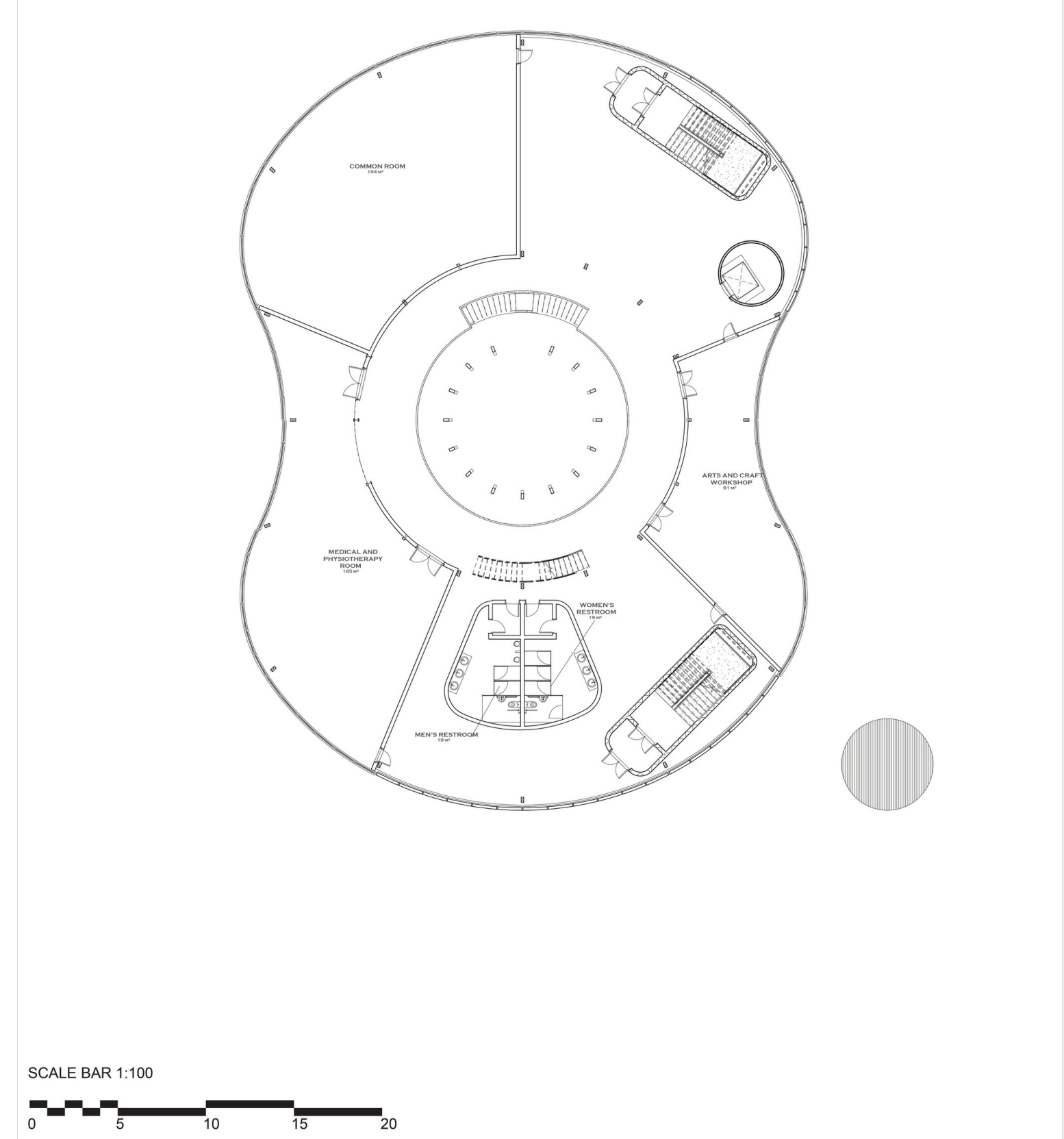
GROUND FLOOR



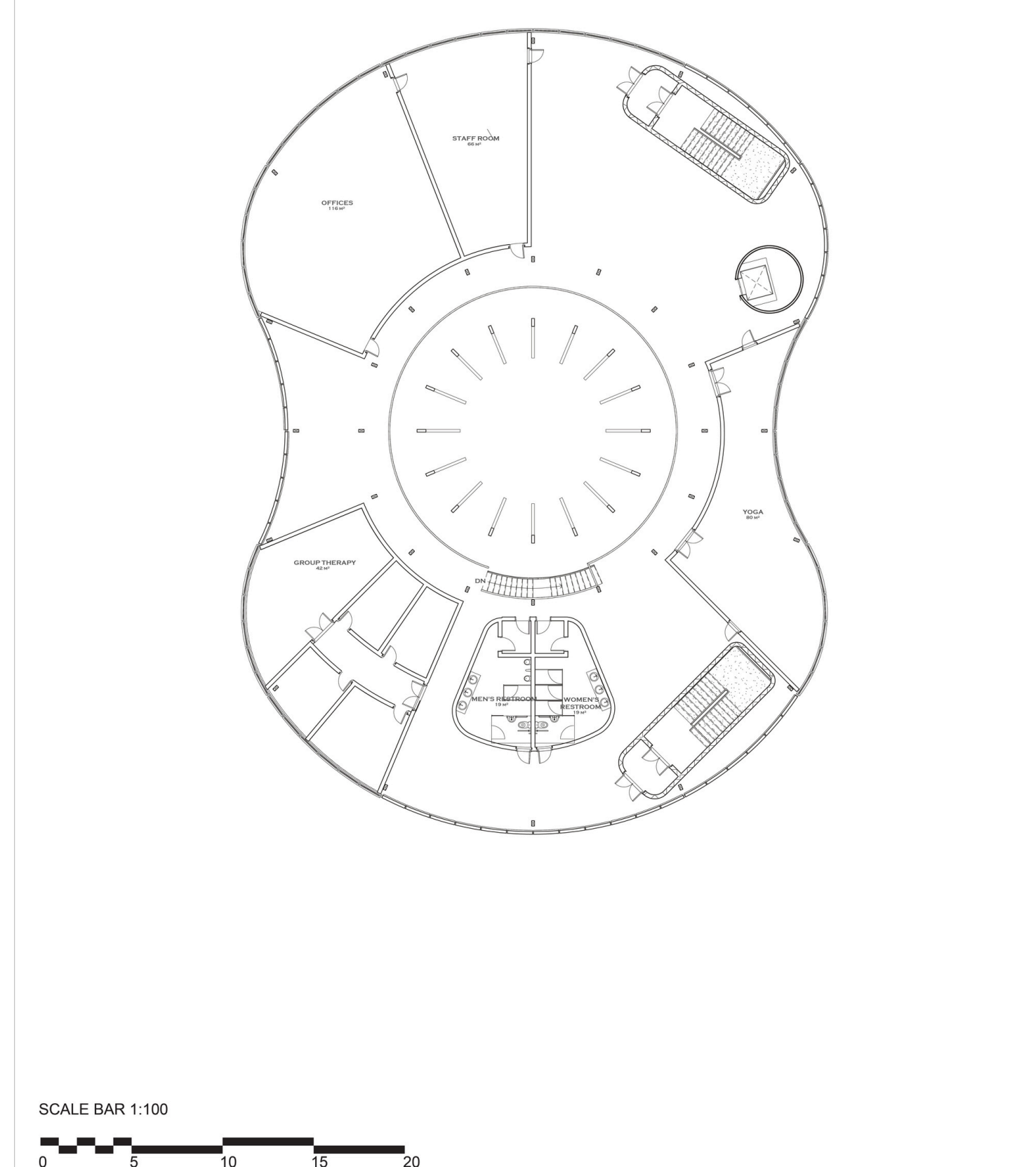
AXONOMETRIC DIAGRAM



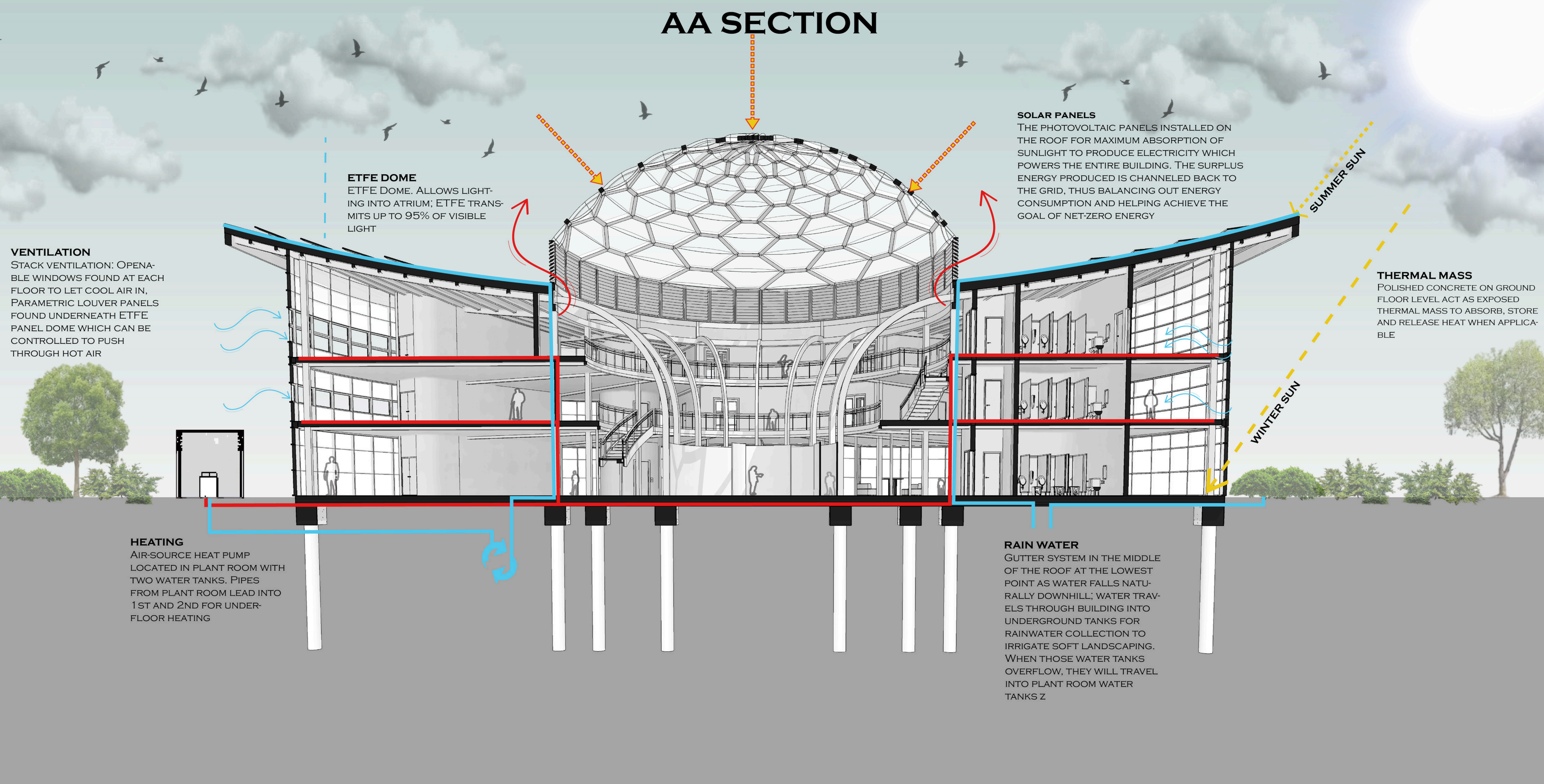
1ST FLOOR



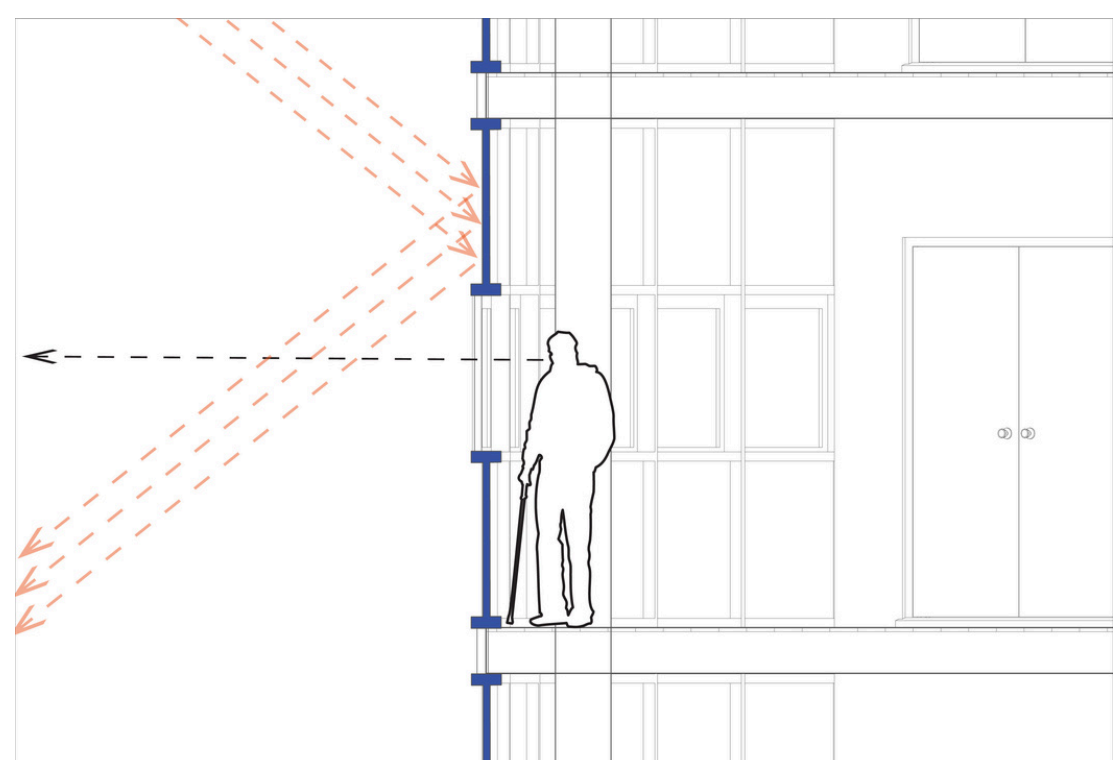
2ND FLOOR



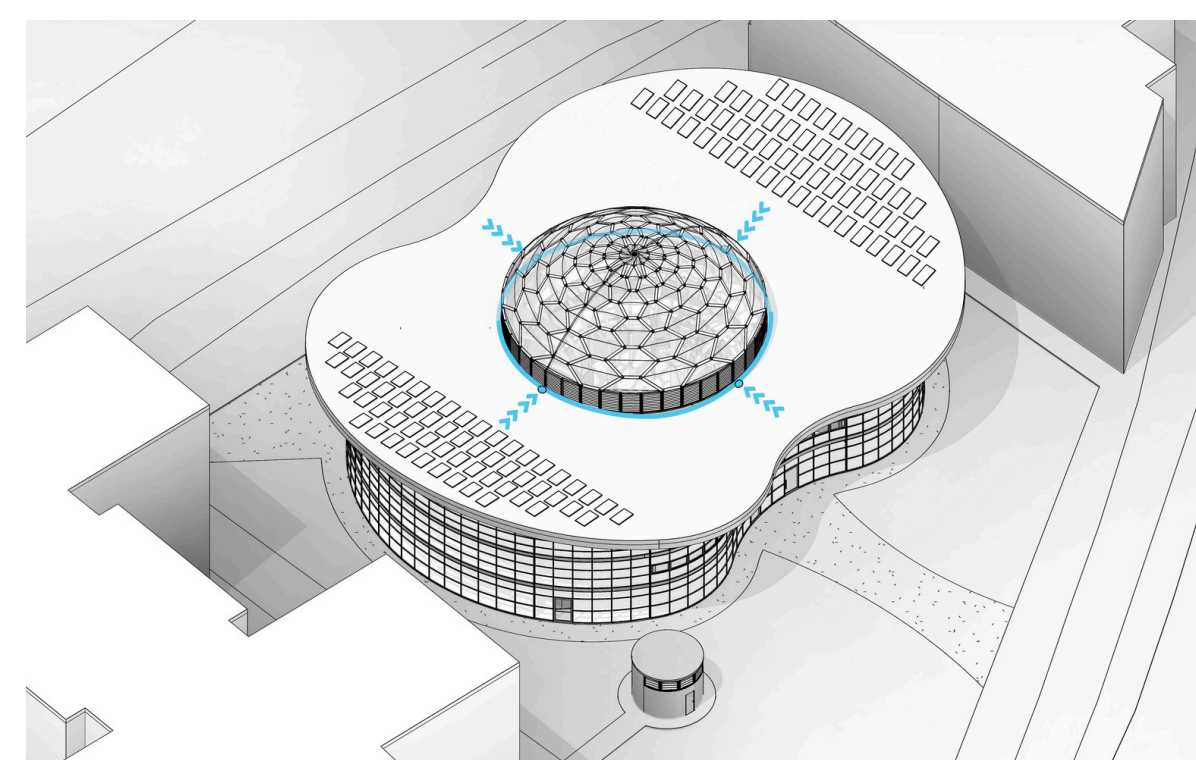
AA SECTION



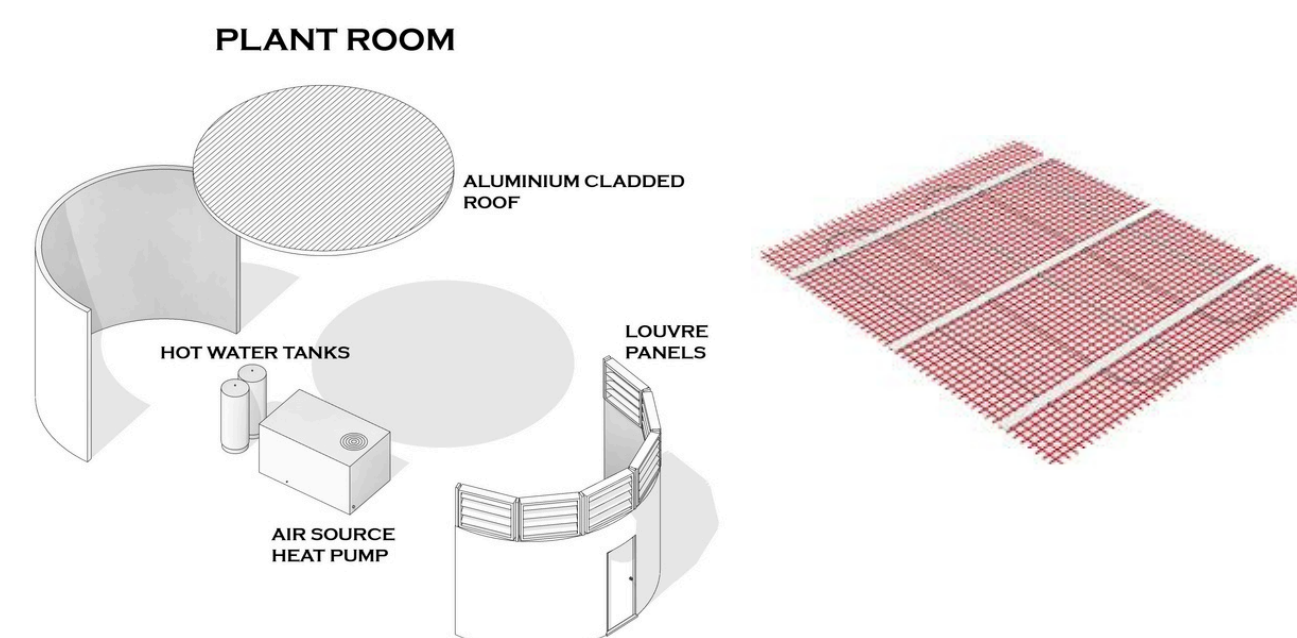
SOLAR CONTROL



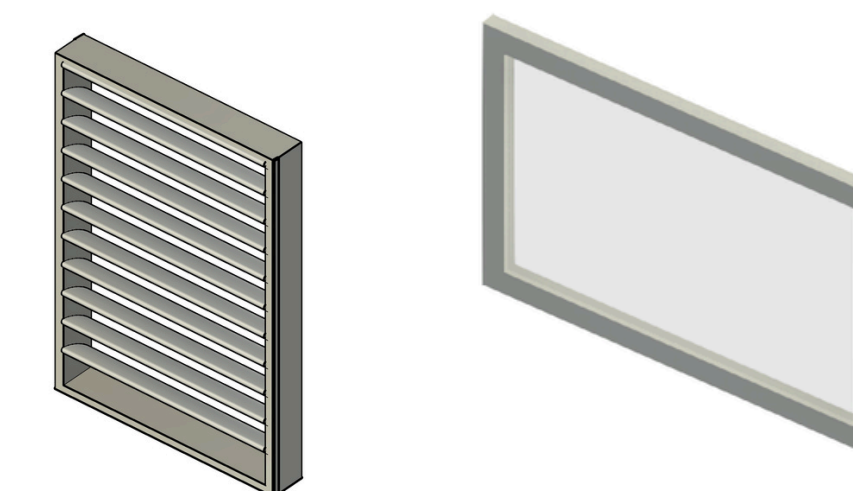
RAINWATER HARVESTING



HEATING



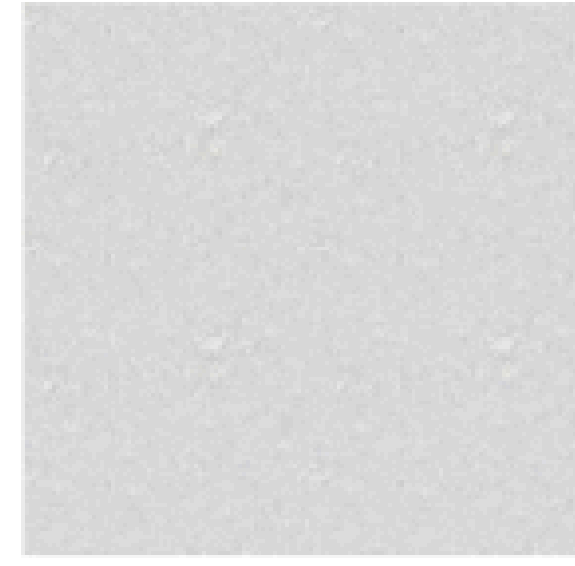
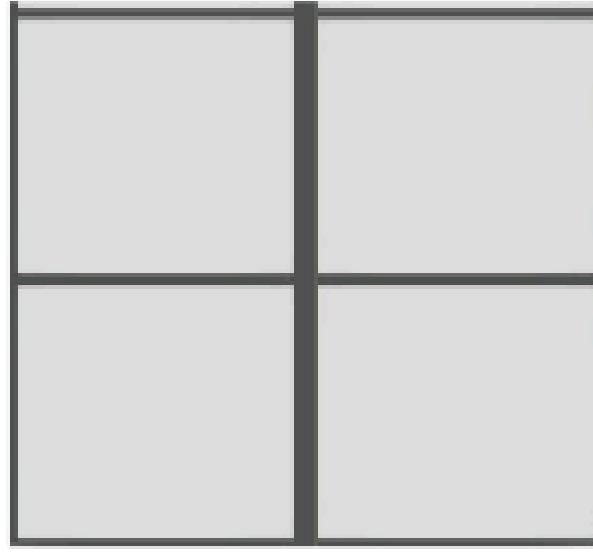
VENTILATION



RENEWABLE ENERGY



MATERIAL SELECTION



Curtain wall glazing

- Solar gain
- Maximisation of daylight
- Weather protection

Polished concrete

- High density, high thermal mass
- Durable and low maintenance
- High light reflectance

Sloped aluminium cladding

- High corrosion resistance
- Recyclable material
- Low embodied carbon- (Construction)

CLT (Cross-Laminated Timber)

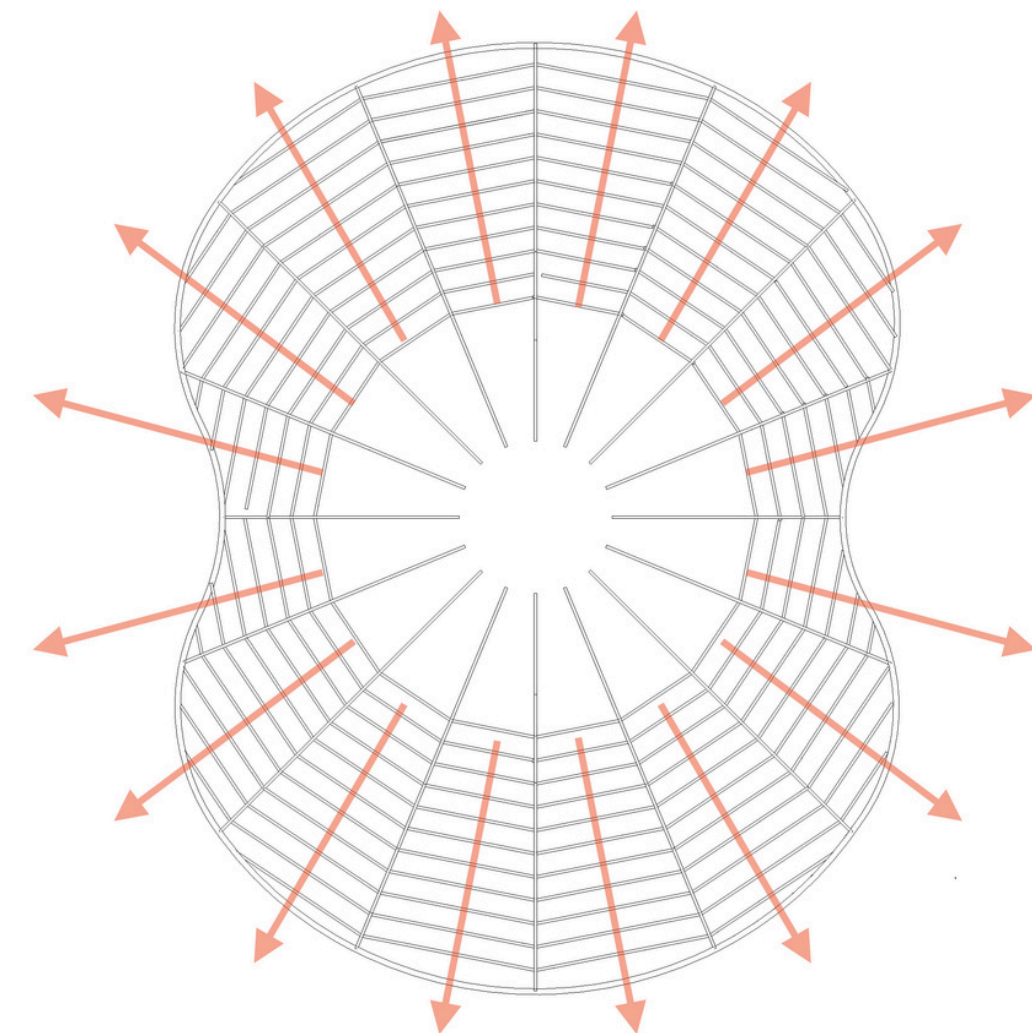
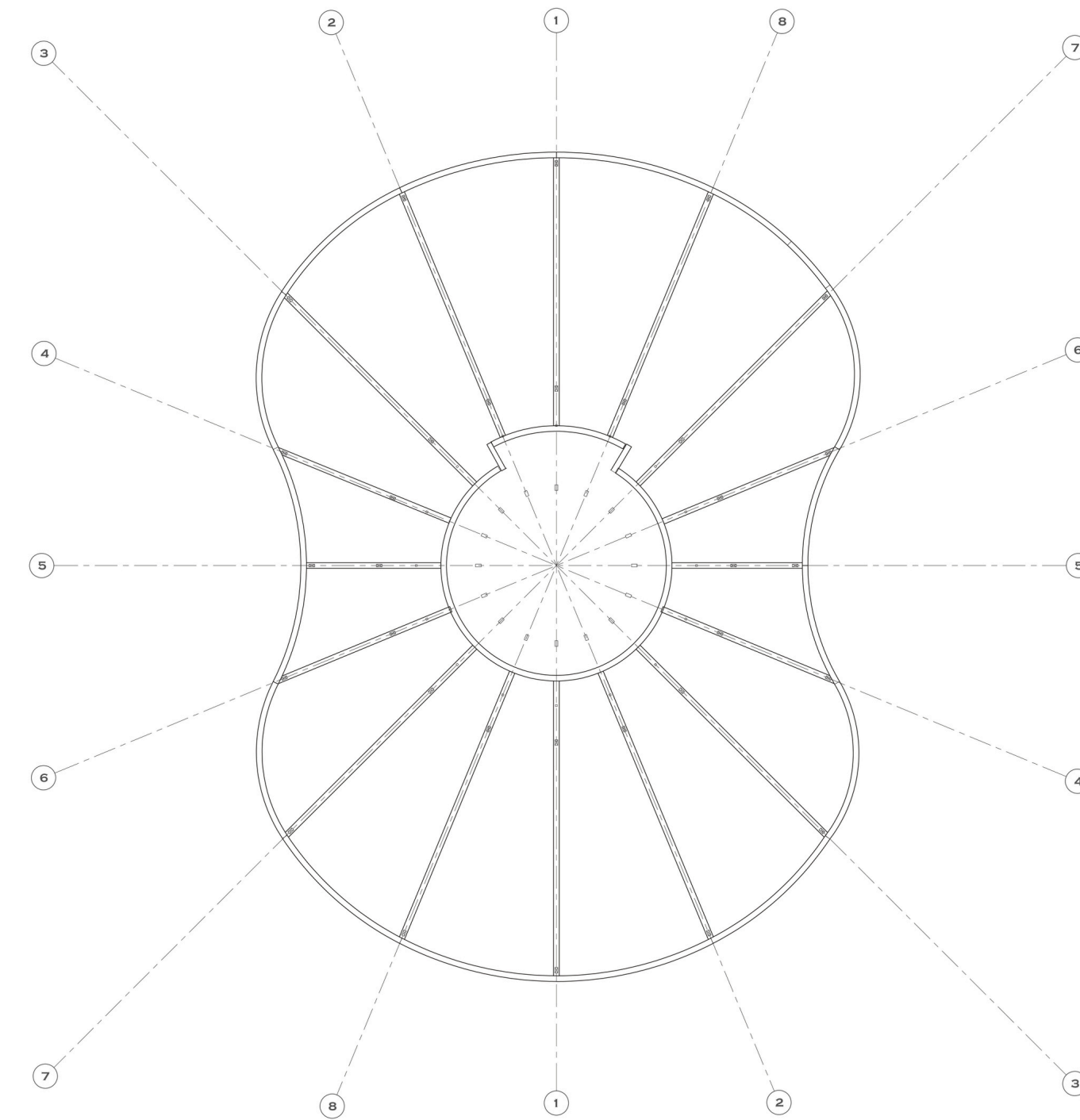
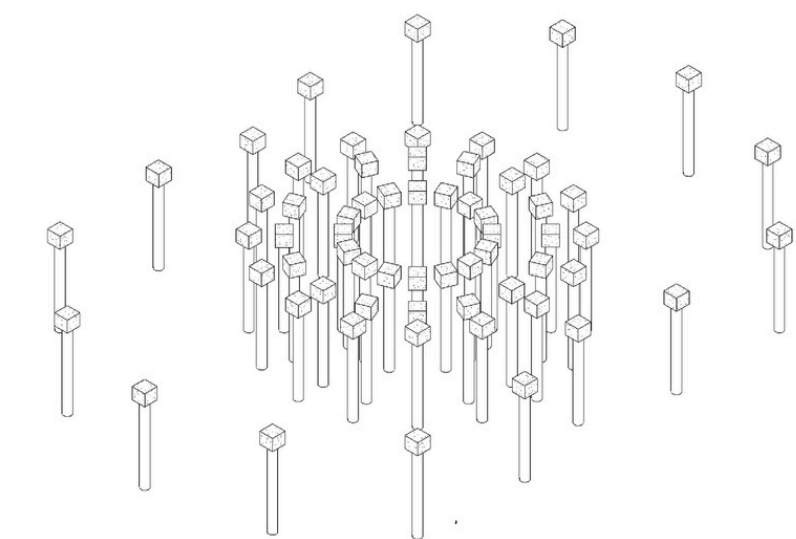
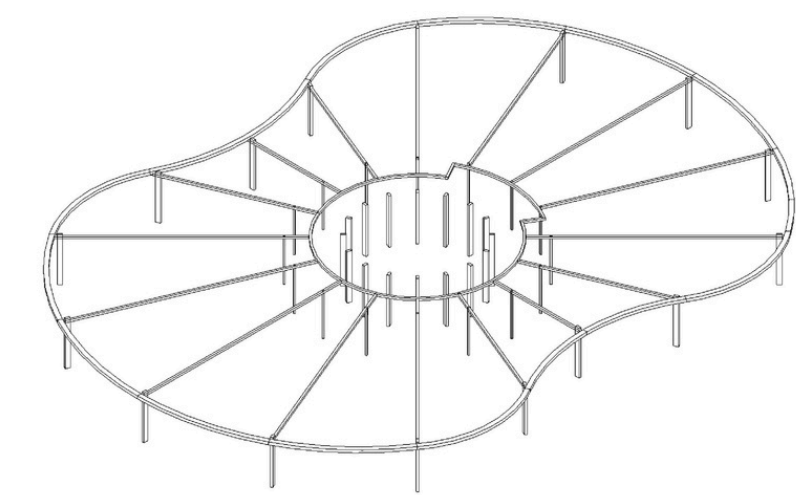
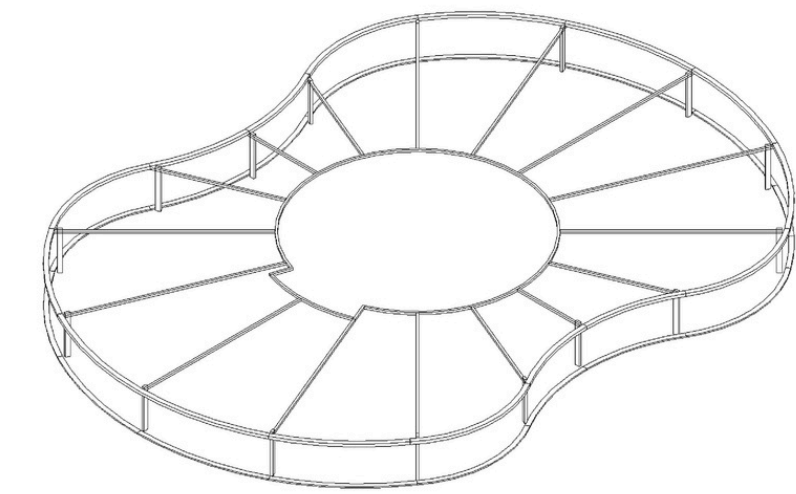
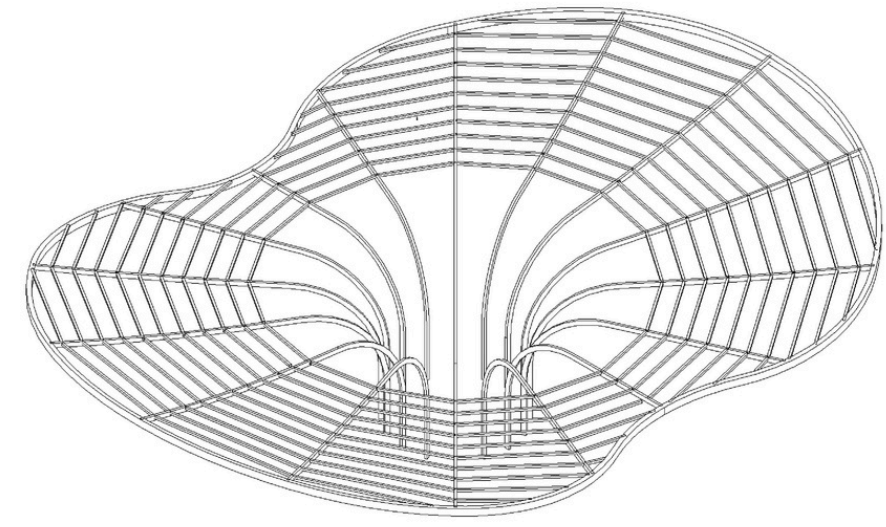
- Active carbon store
- Low operational and construction embodied carbon
- Hygrothermal-moderates temperature swings

English Oak

- Domestically sourced
- Low transport embodied carbon
- CO and biophilic quality

STRUCTURE

STRUCTURE WITH GRID LINES



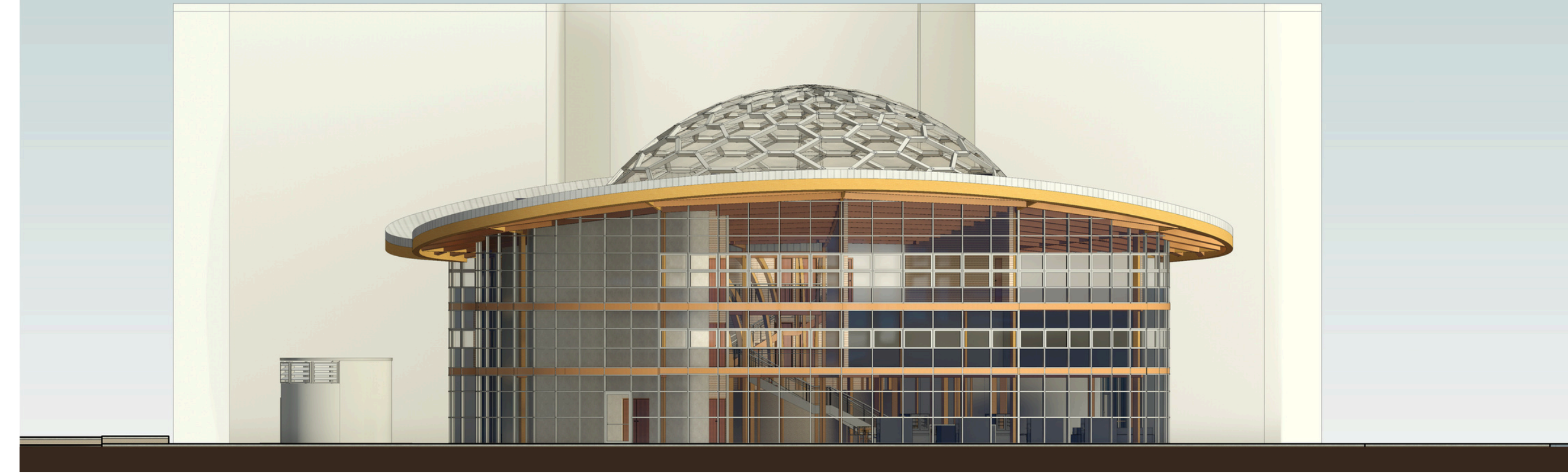
THE PRIMARY STRUCTURE USES BRANCHING GLULAM COLUMNS .CONSTRUCTED FROM LAMINATING TIMBER UNDER PRESSURE, THROUGHOUT THE BUILDING. THEY ARE PLACED ON A RADIAL GRID WITH THE FIRST SET, THE ONES CLOSEST TO THE CENTRE, SUPPORTING THE FIRST FLOOR, AND ANOTHER SET OF COLUMNS GOING UP TO THE CIRCULAR TIMBER FRAMES THAT ARE CRUCIAL TO SUPPORTING THE PARAMETRIC LOUVER PANELS, THAT SIT BELOW THE DOME. THEN THE LAST SET OF COLUMNS ON THE OUTSIDE, NEAREST THE ENVELOPE OF THE BUILDING, THAT SUPPORT THE ROOF AND THE WHOLE BUILDING. THERE ARE ALSO COLUMNS IN THE CENTRE OF THE BUILDING IN A RADIAL PATTERN THAT ARCH OUTWARDS AND CONNECT TO THE ROOF OF THE BUILDING. THERE ARE BEAMS THAT THEN CONNECT EACH COLUMN TO FORM THE ROOF.

GLULAM IS PRODUCT DERIVED FROM TIMBER THAT ACTS TO ABSORB CARBON FROM THE ENVIRONMENT DURING ITS DEVELOPMENT INTO A MATURE TREE. THE REMOVED CARBON GETS STORED WITHIN THE MATERIAL THROUGHOUT ITS LIFETIME. THEREFORE, THE BUILDING'S STRUCTURE ITSELF FUNCTIONS AS A CARBON STORE OPPOSED TO A CARBON SOURCE. PRODUCING GLULAM REQUIRES SIGNIFICANTLY LESS ENERGY COMPARED TO MANUFACTURING STEEL OR CONCRETE. THE BINDING PROCESS, IN THIS CASE THE LAMINATING THE TIMBER, DOES NOT REQUIRE MUCH ENERGY WHEN CONTRASTED WITH SMELTING OR CEMENT MAKING, ONE OF THE MOST ENERGY INTENSIVE PROCESSES AND MAJOR SOURCES OF CARBON EMISSIONS IN THE INDUSTRY. THIS LOWERS THE CARBON FOOTPRINT OF THE MAIN STRUCTURAL ELEMENTS. THE BRANCHING COLUMN SYSTEM ITSELF IS A HIGH ENERGY-EFFICIENT SOLUTION. LOADS ARE DISTRIBUTED PROGRESSIVELY, MEANING LESS MATERIAL IS NEEDED TO ACHIEVE SIMILAR STRUCTURAL PROPERTIES. LOWER MATERIAL CONSUMPTION LEADS TO LOWER CARBON DIOXIDE EMISSIONS. THE RADIAL GRID AND ARCHED CENTRAL COLUMNS THAT ALIGN WITH THE FLOW OF FORCE INSTEAD OF OPPOSING IT. THE ARCHED COLUMNS FOLLOW THE LOAD THROUGH COMPRESSION WHERE THE TIMBER PROVES TO BE EFFECTIVE.

SCALE BAR 1:100



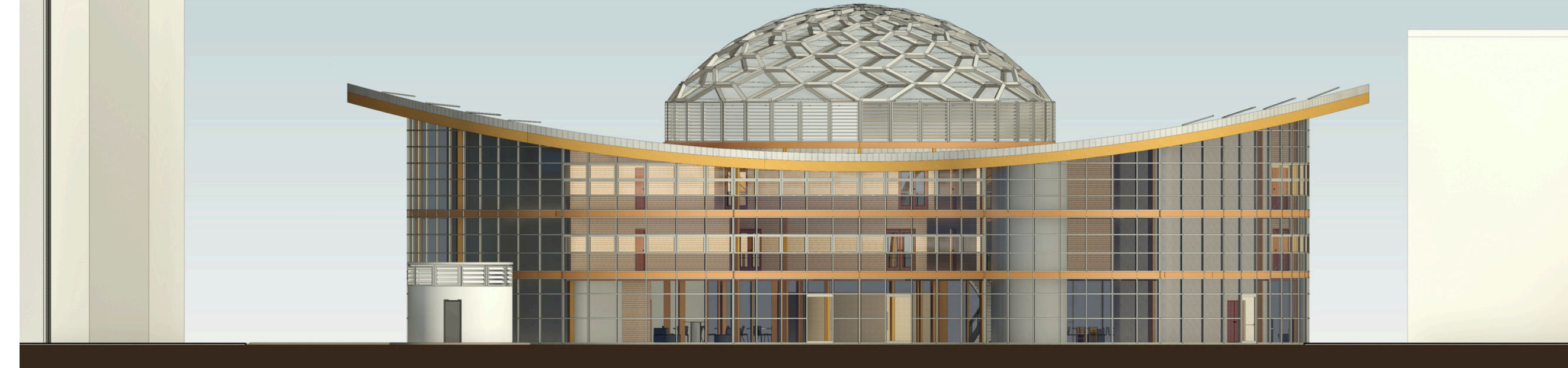
NORTH ELEVATION



SCALE BAR 1:100



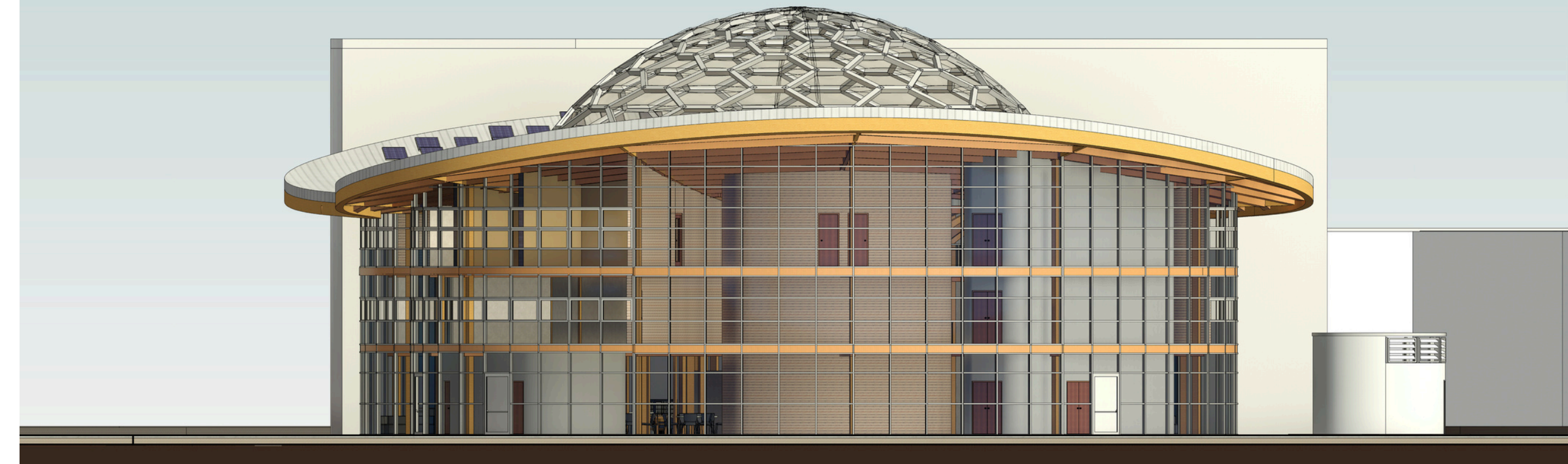
EAST ELEVATION



SCALE BAR 1:100



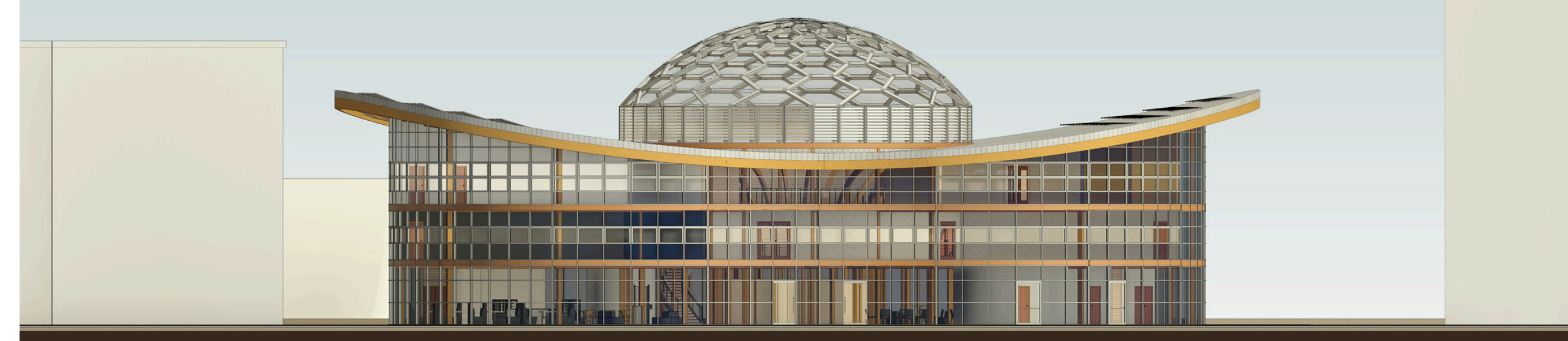
SOUTH ELEVATION



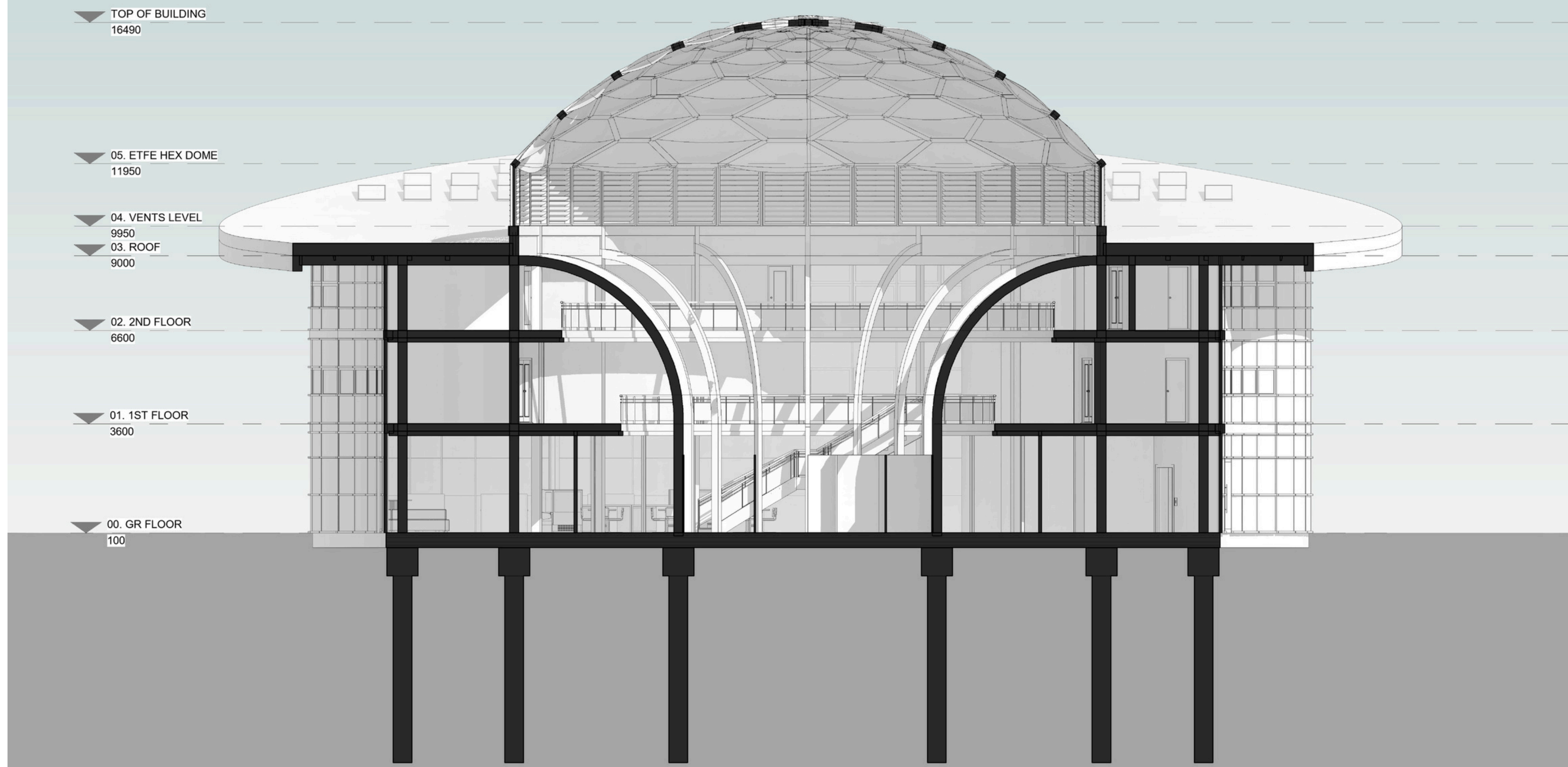
SCALE BAR 1:100



WEST ELEVATION



SECTION BB

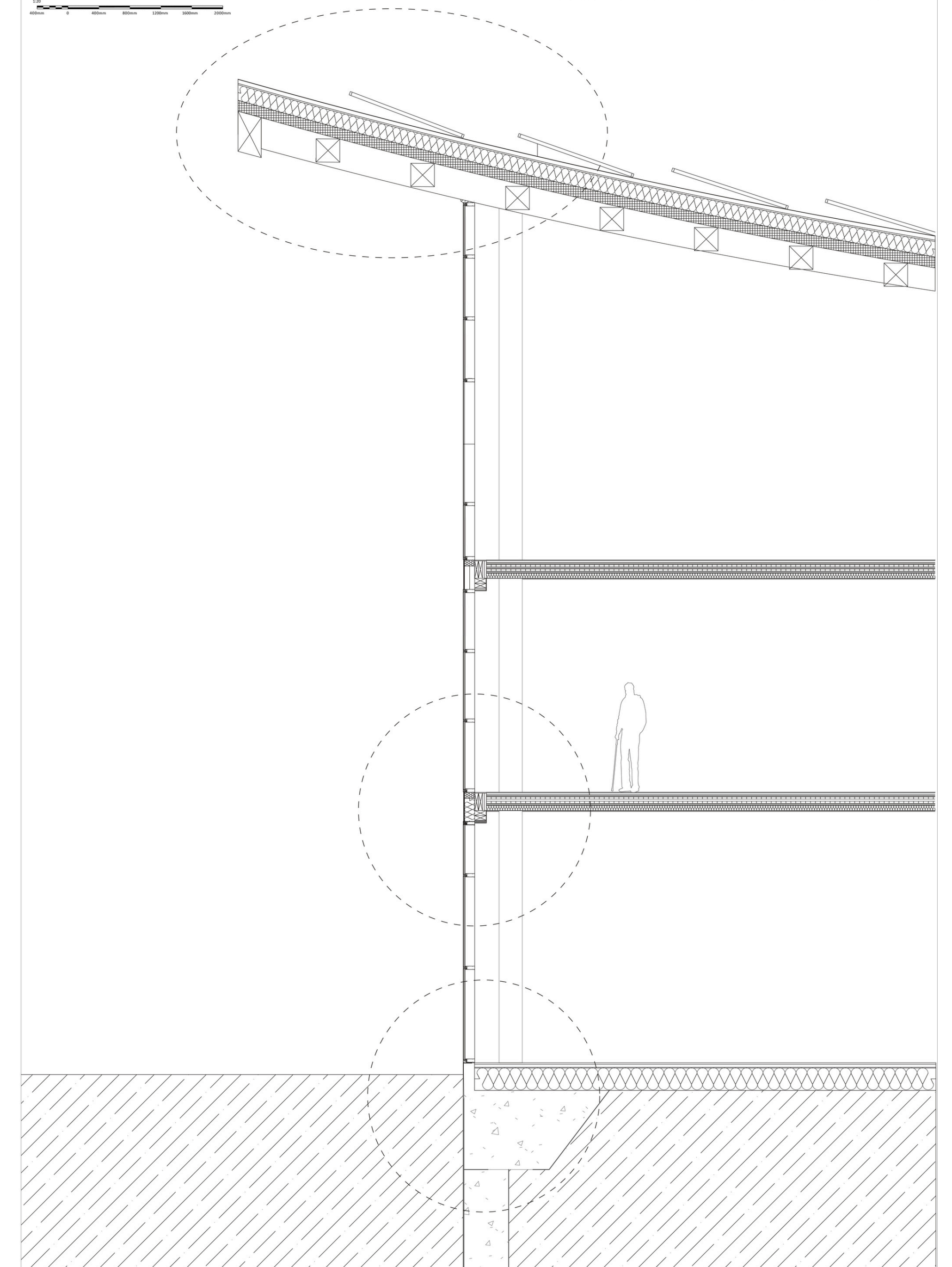


SCALE BAR 1:100



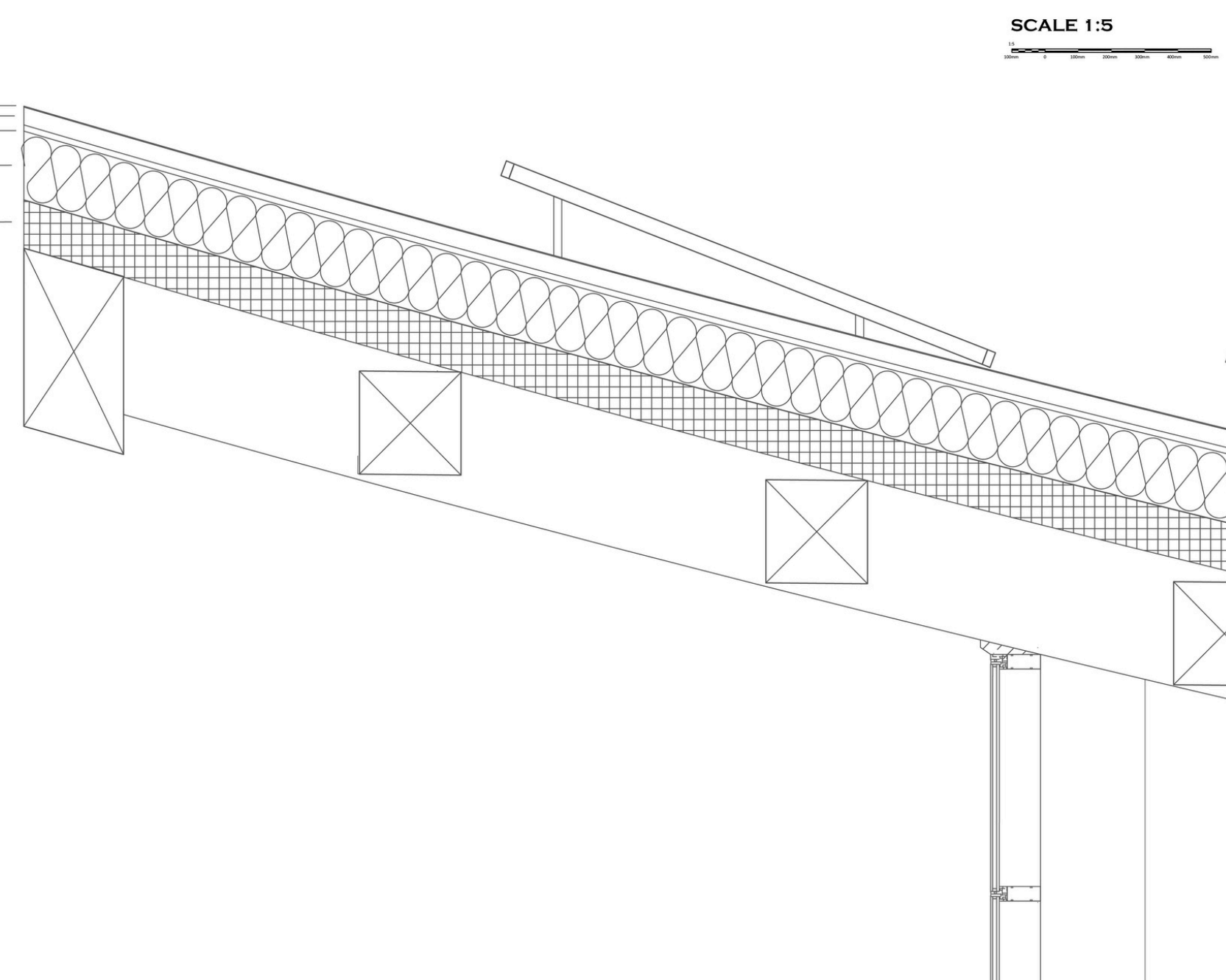
SCALE 1:20

DETAILED CONSTRUCTION SECTION

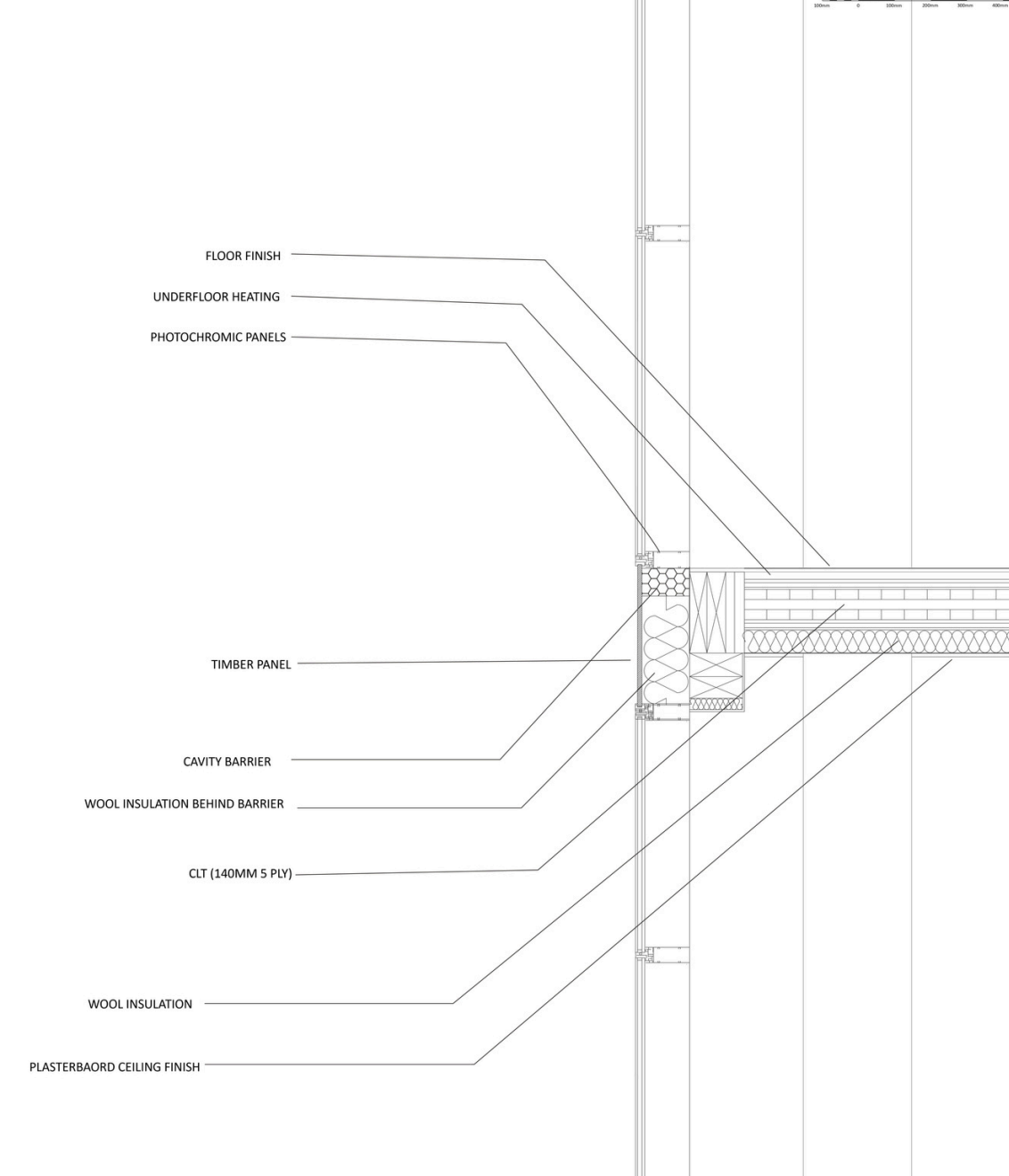


ROOF TO WALL

- ALUMINIUM CLADDING
- VENTILATION CAVITY
- PLYWOOD DECK
- WOOL FIBRE INSULATION
- CLT ROOF PANEL



WALL TO FLOOR



FOUNDATION

