

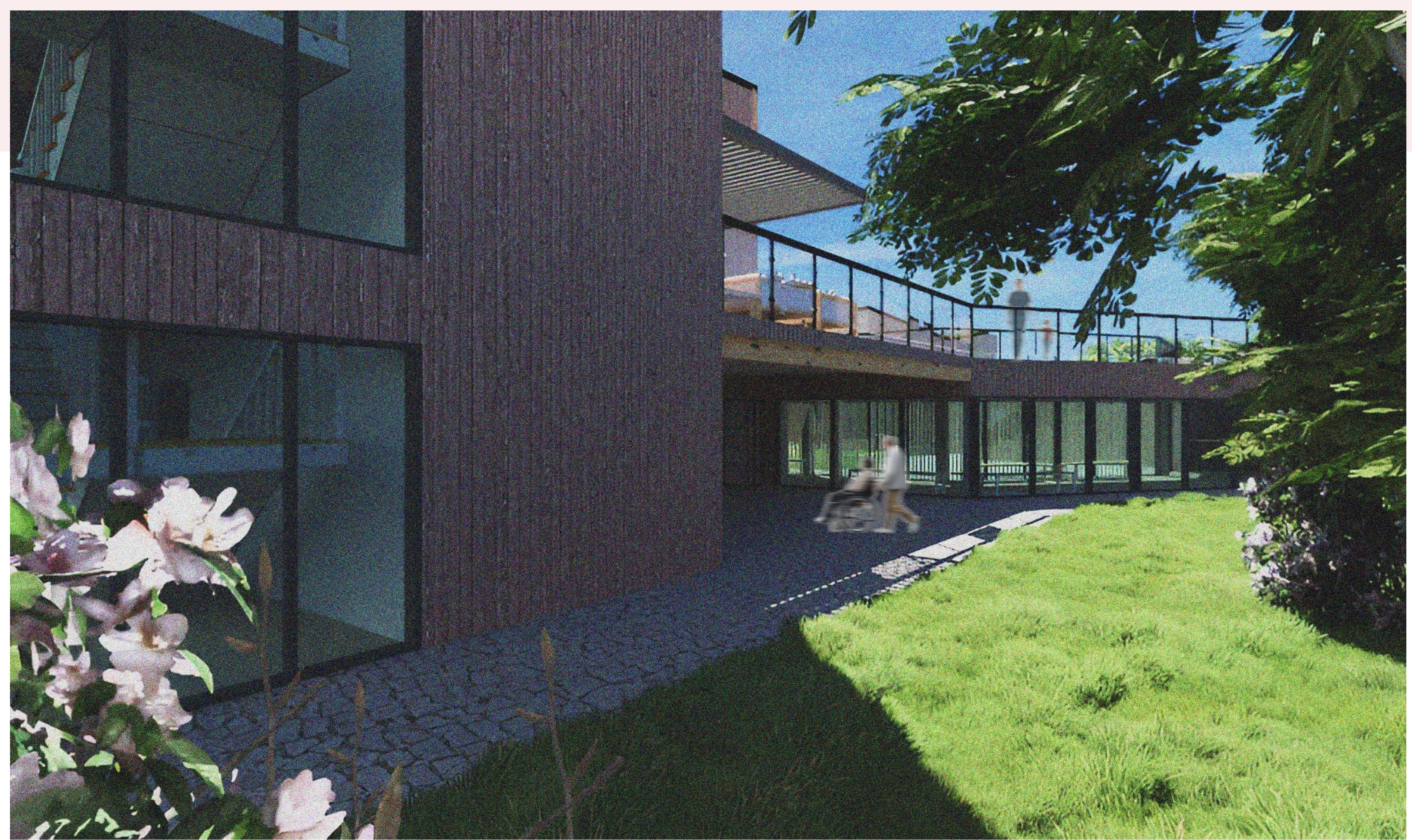
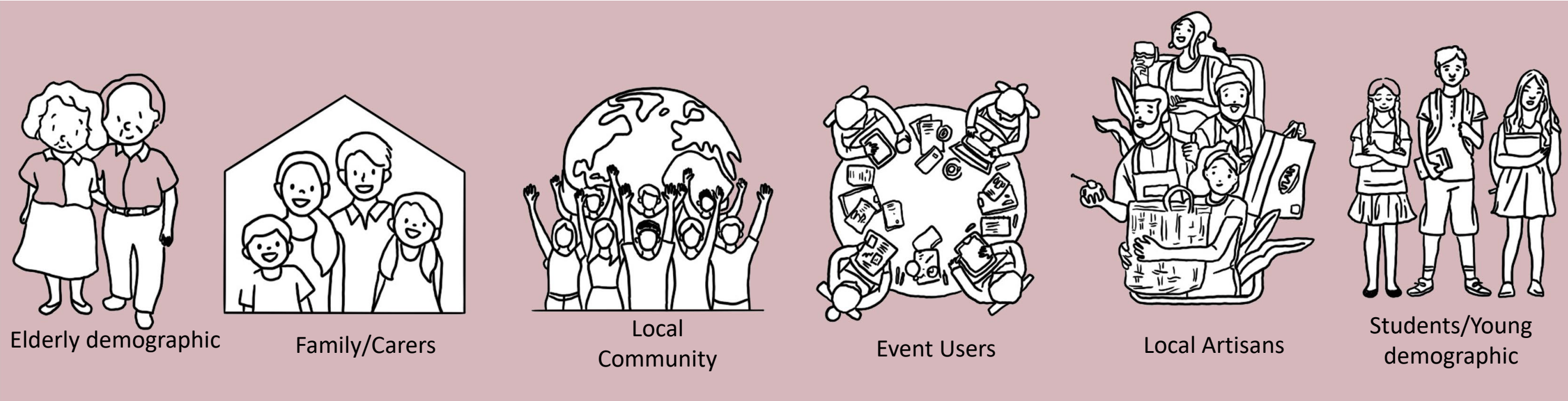
LAYERED CONNECTIVITY

Intergenerational Community Centre - Neha Shammy

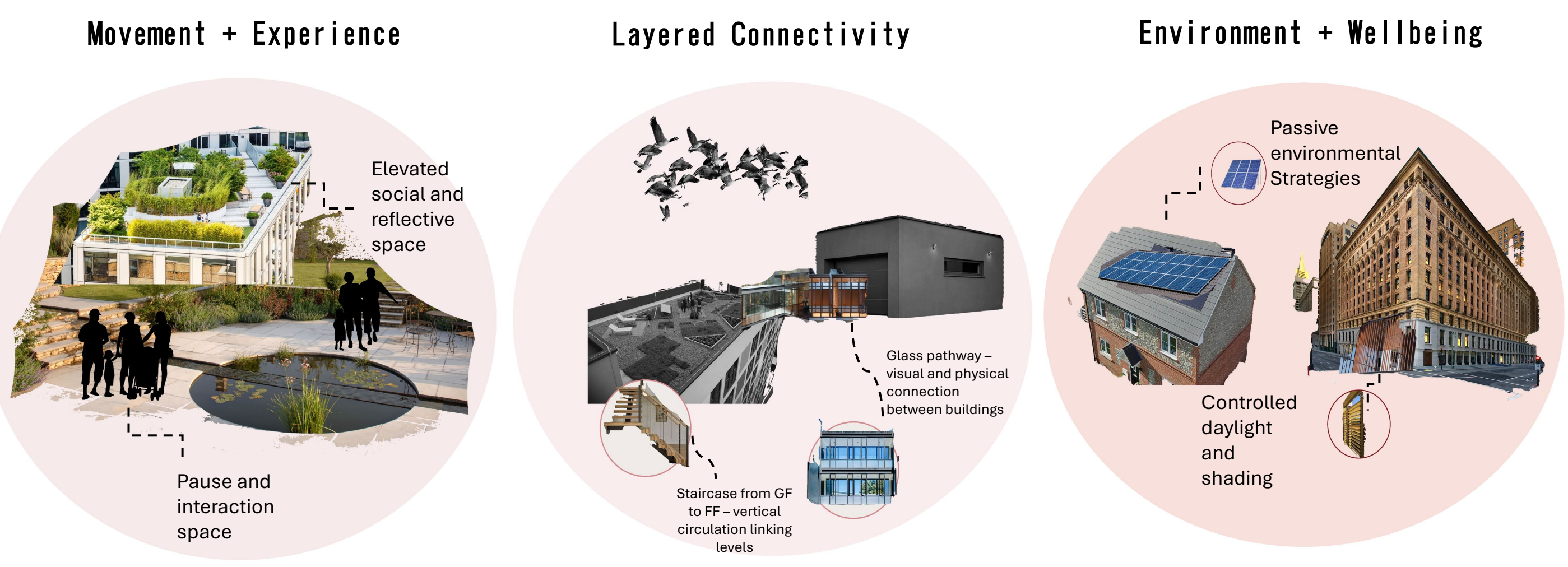
CONCEPT

Through a balance of privacy and openness, this project explores how architecture can connect space, people and nature. A continuous physical and visual connection is created by interconnected volumes that are organised around a central courtyard linked by glazed corridors and bridges. Encouraging wellbeing and intergenerational engagement, movement is designed as a journey of pause, interaction and retreat. While the exposed timber structure creates a welcoming and warm architectural character, passive strategies including stack effect, cross-ventilation and controlled daylighting improve environmental performance.

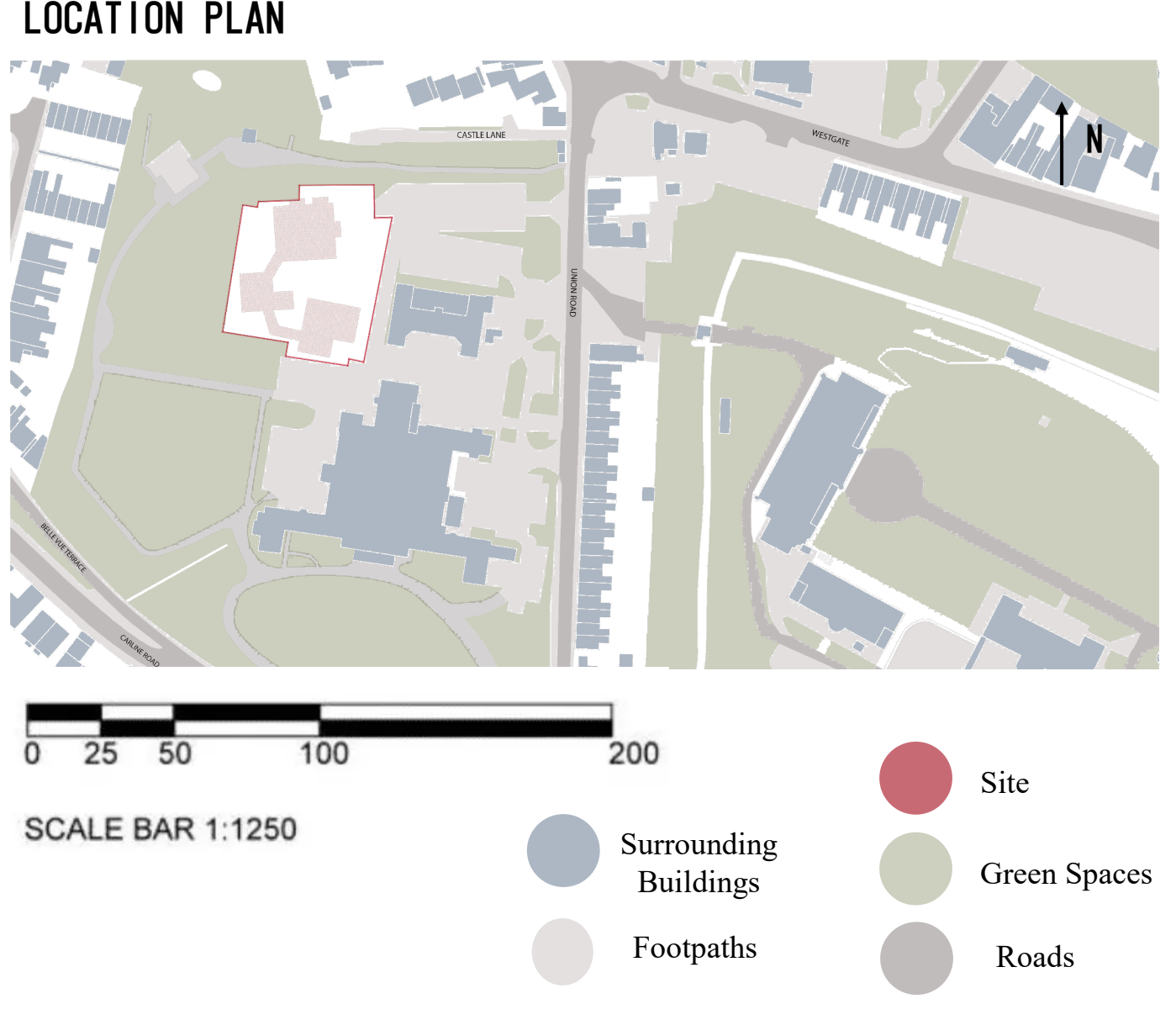
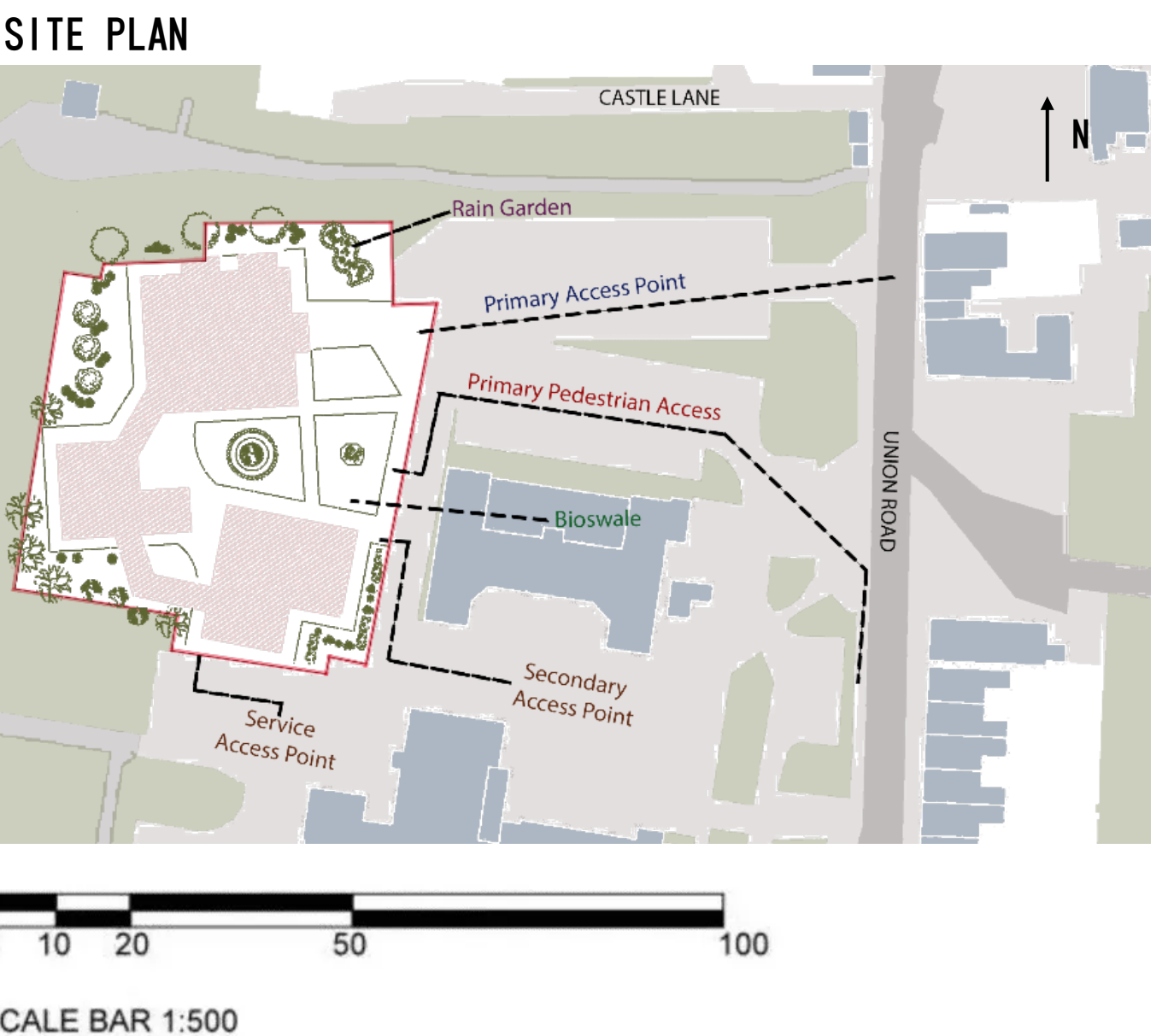
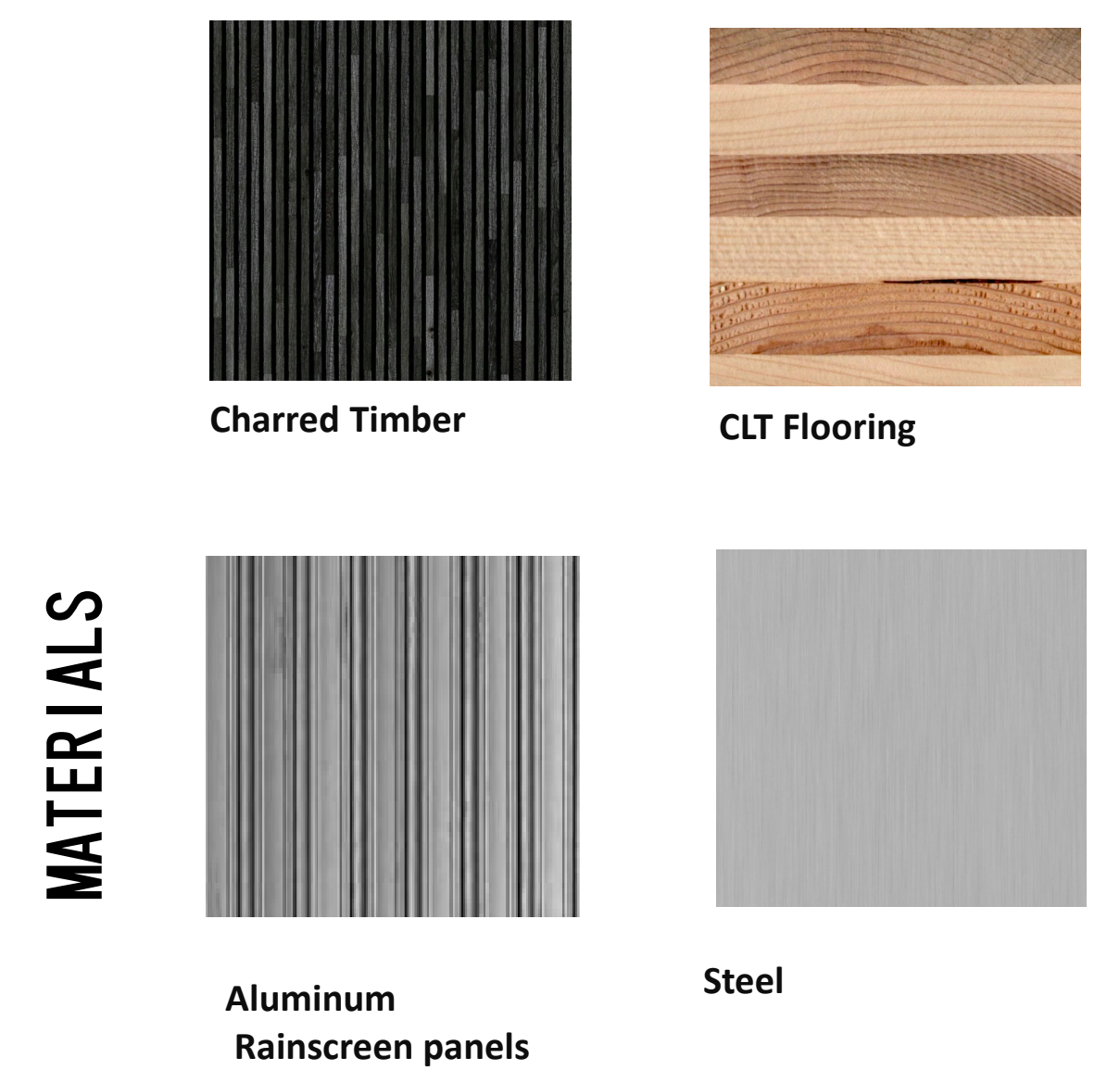
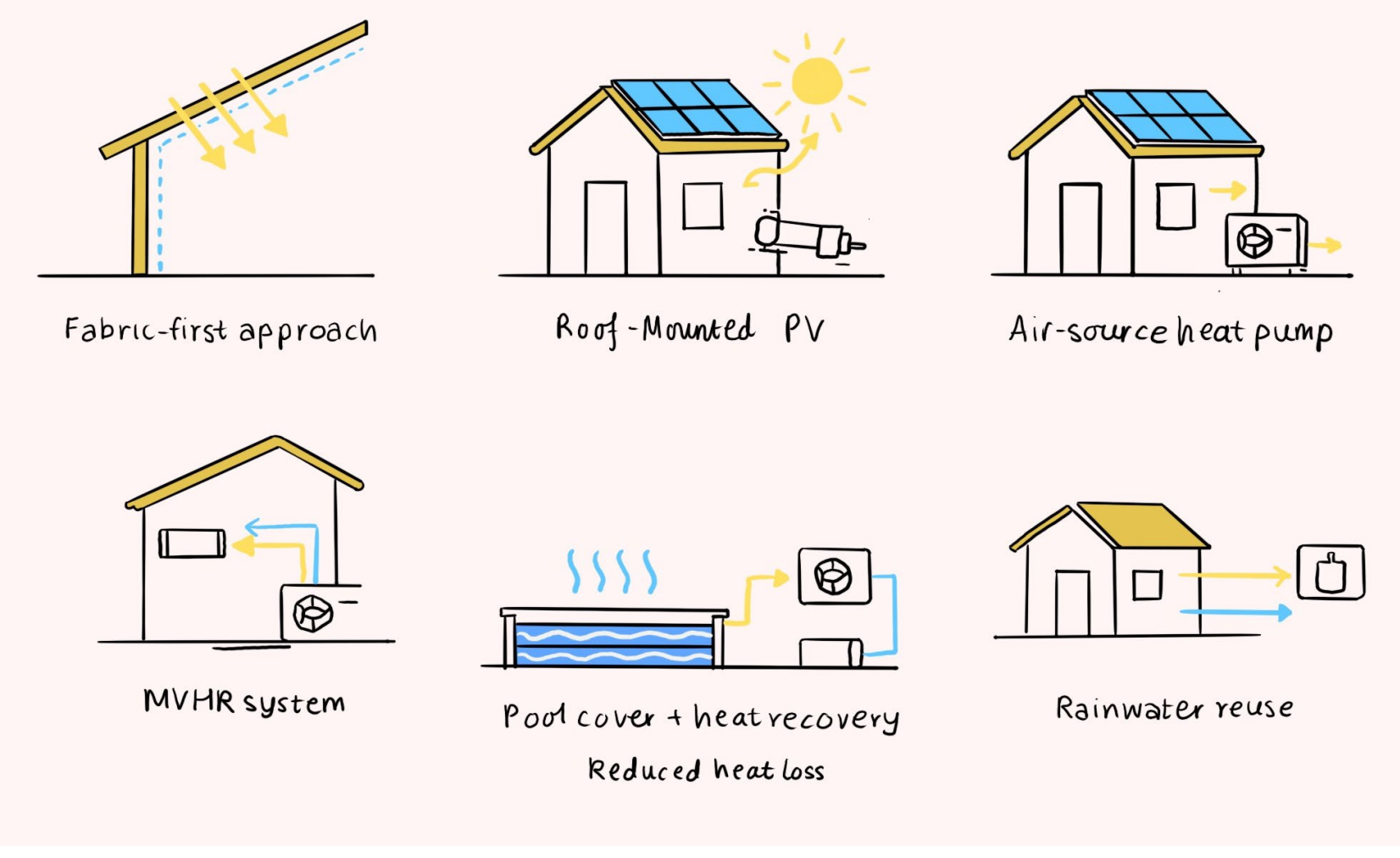
TARGET USERS



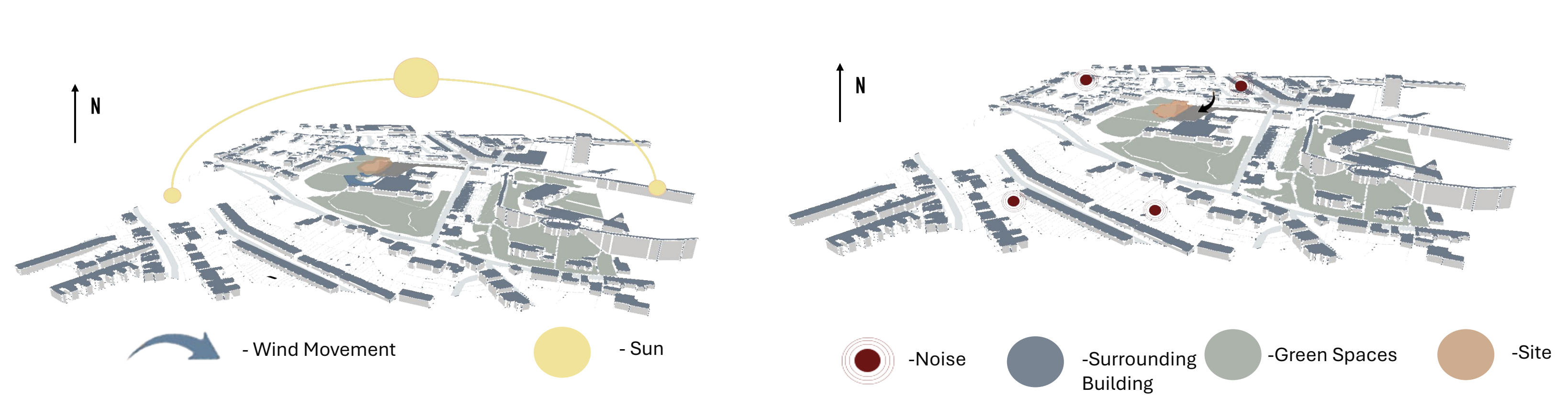
CONCEPT DIAGRAMS



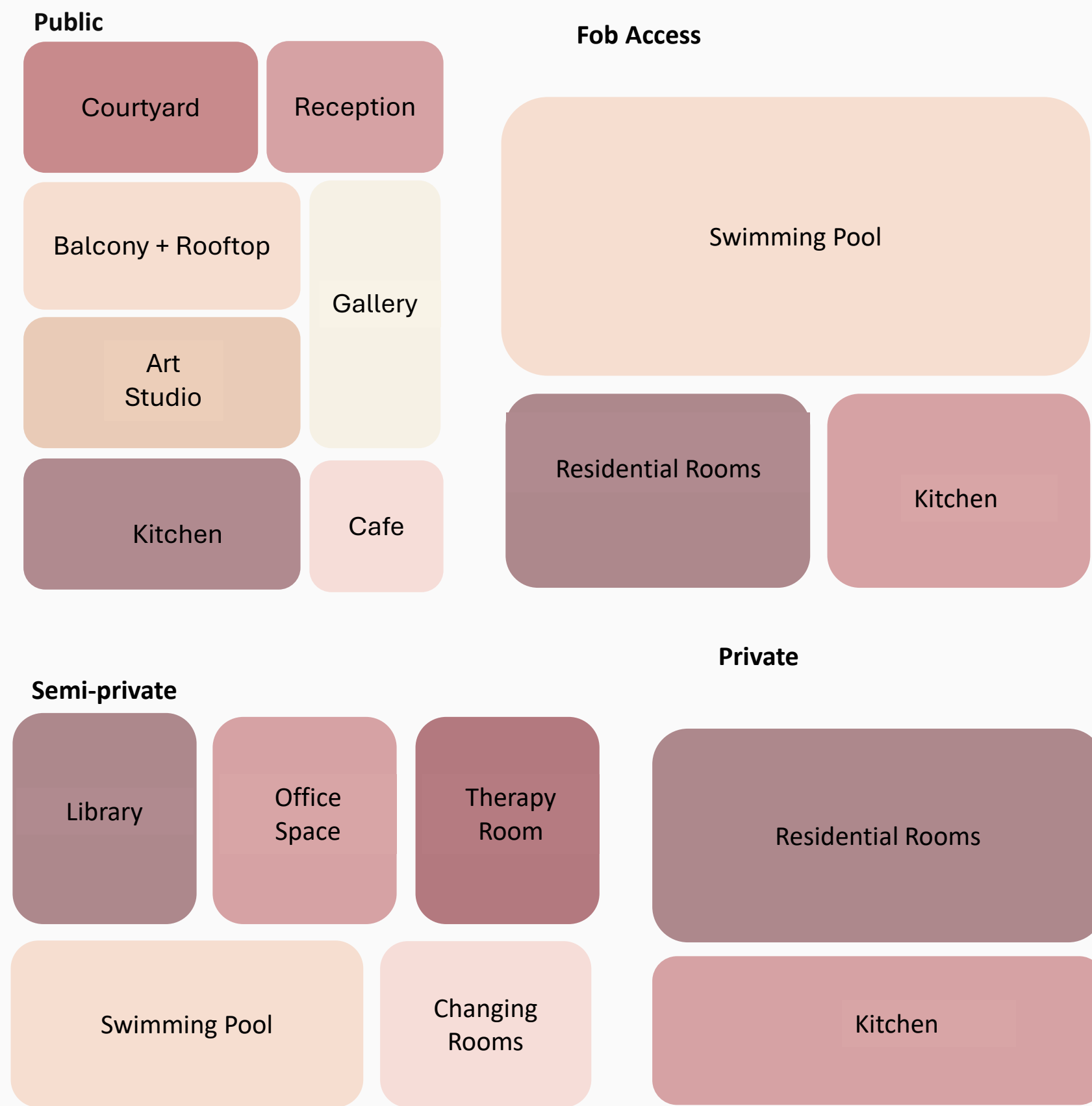
NET ZERO STRATEGIES



SITE ANALYSIS

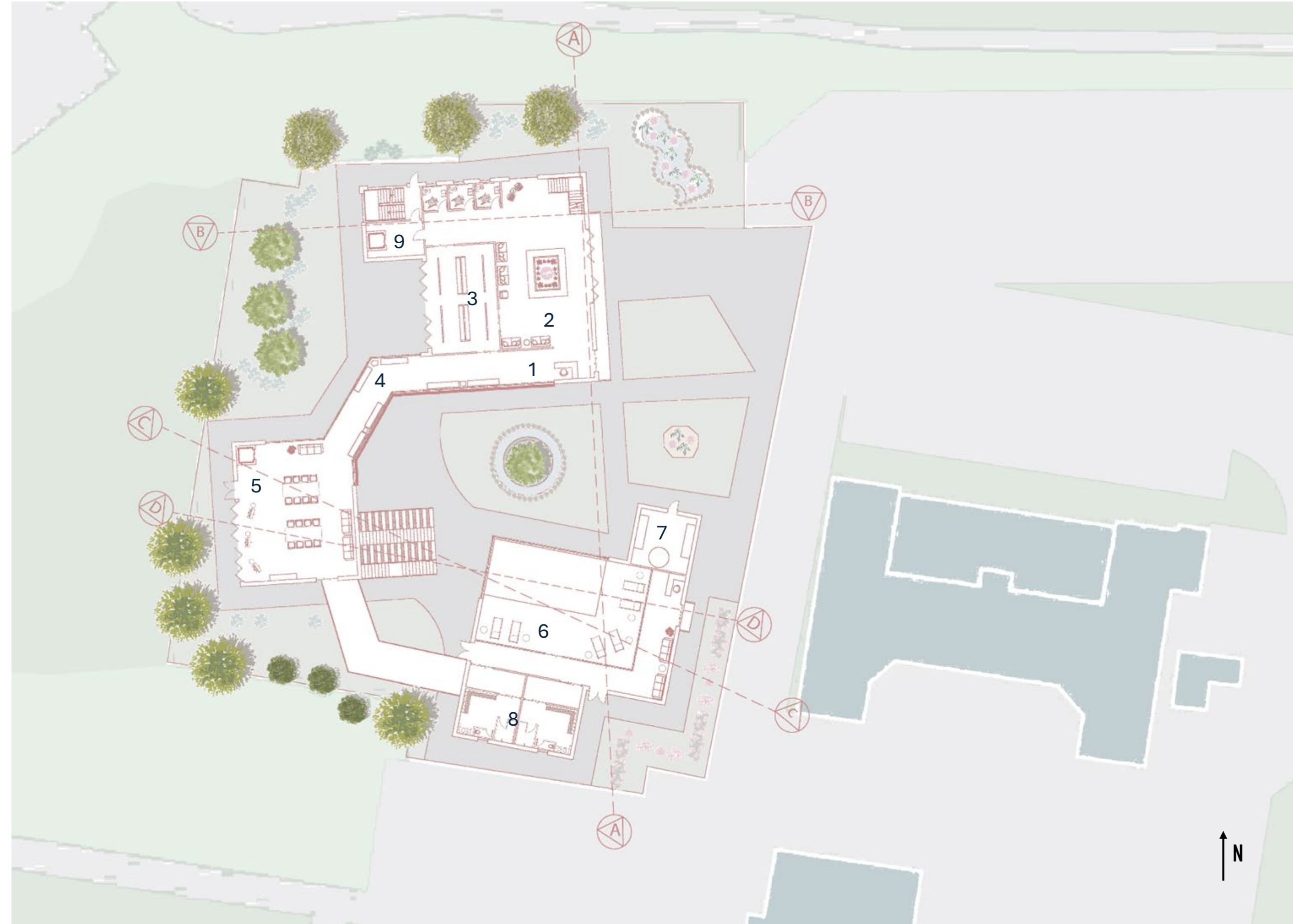


KEY ZONING

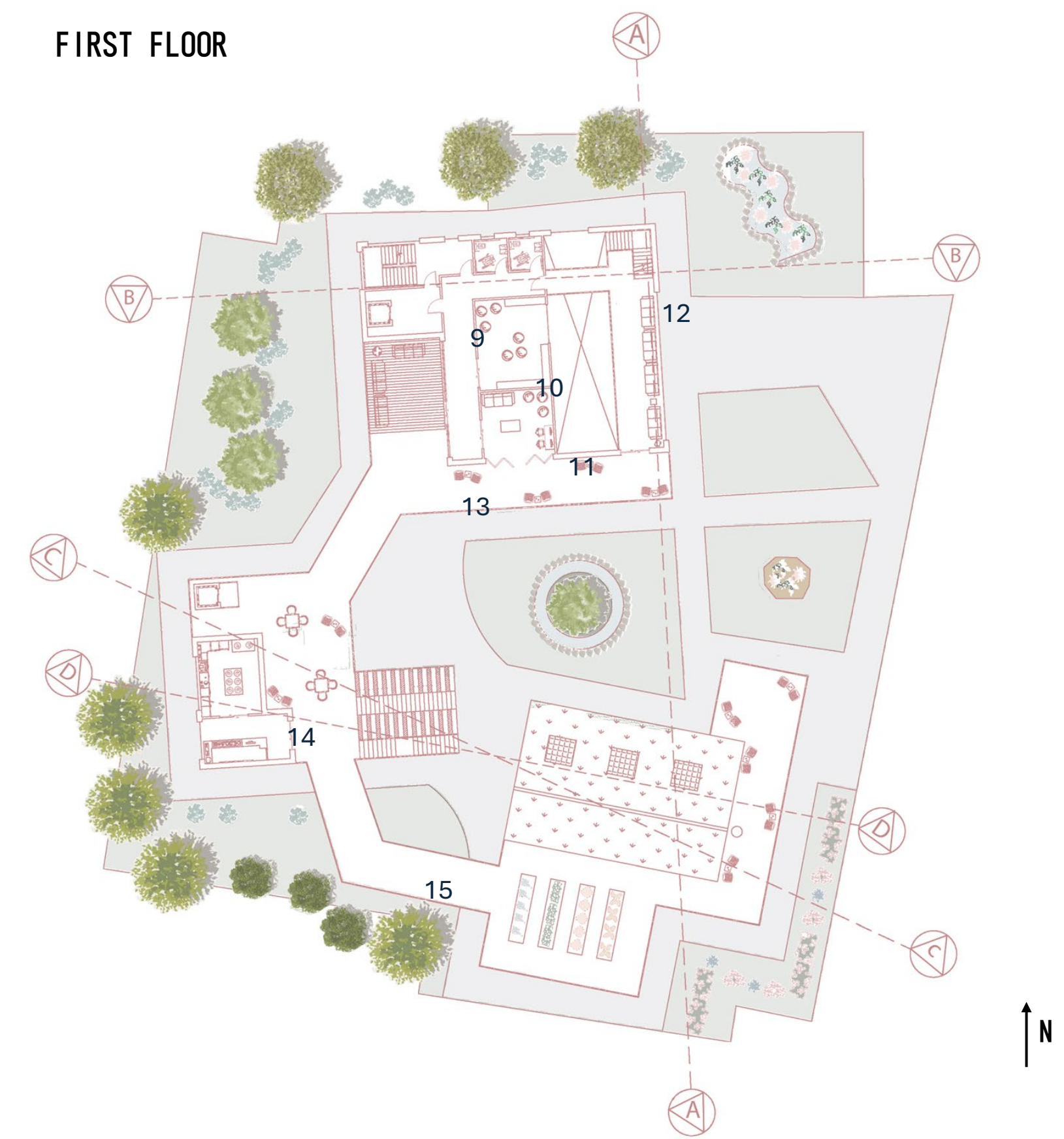


FLOORPLANS

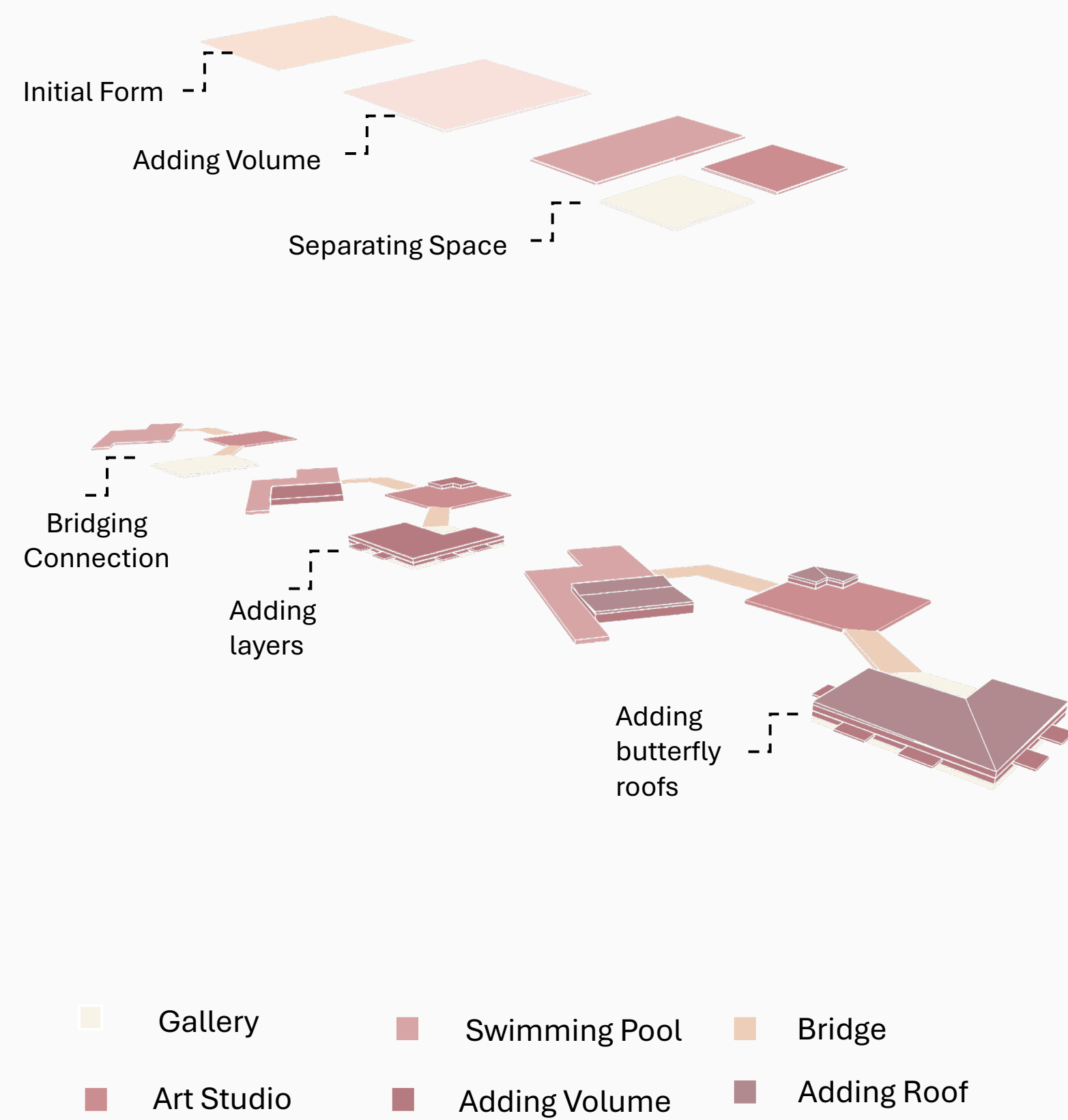
GROUND FLOOR



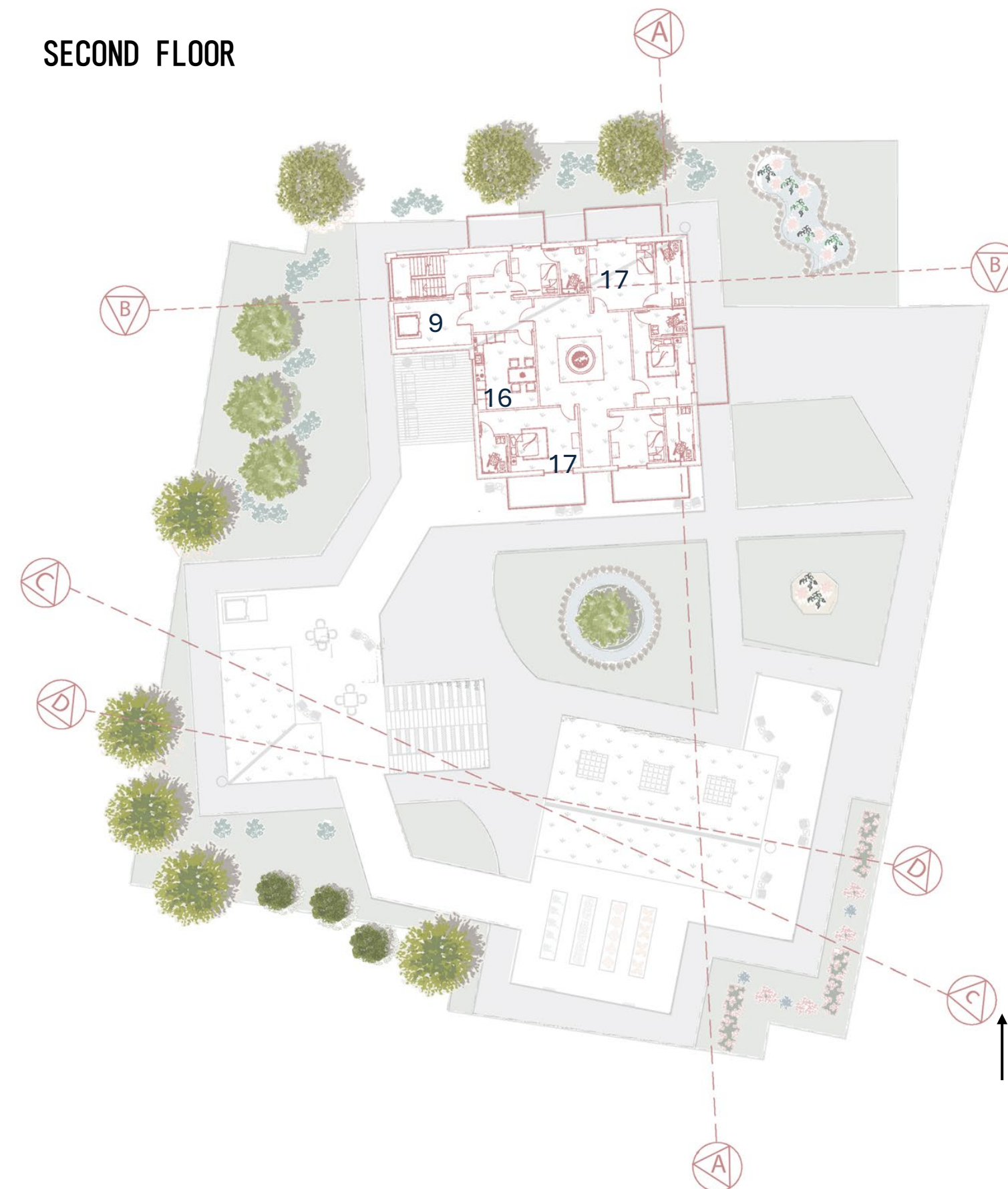
FIRST FLOOR



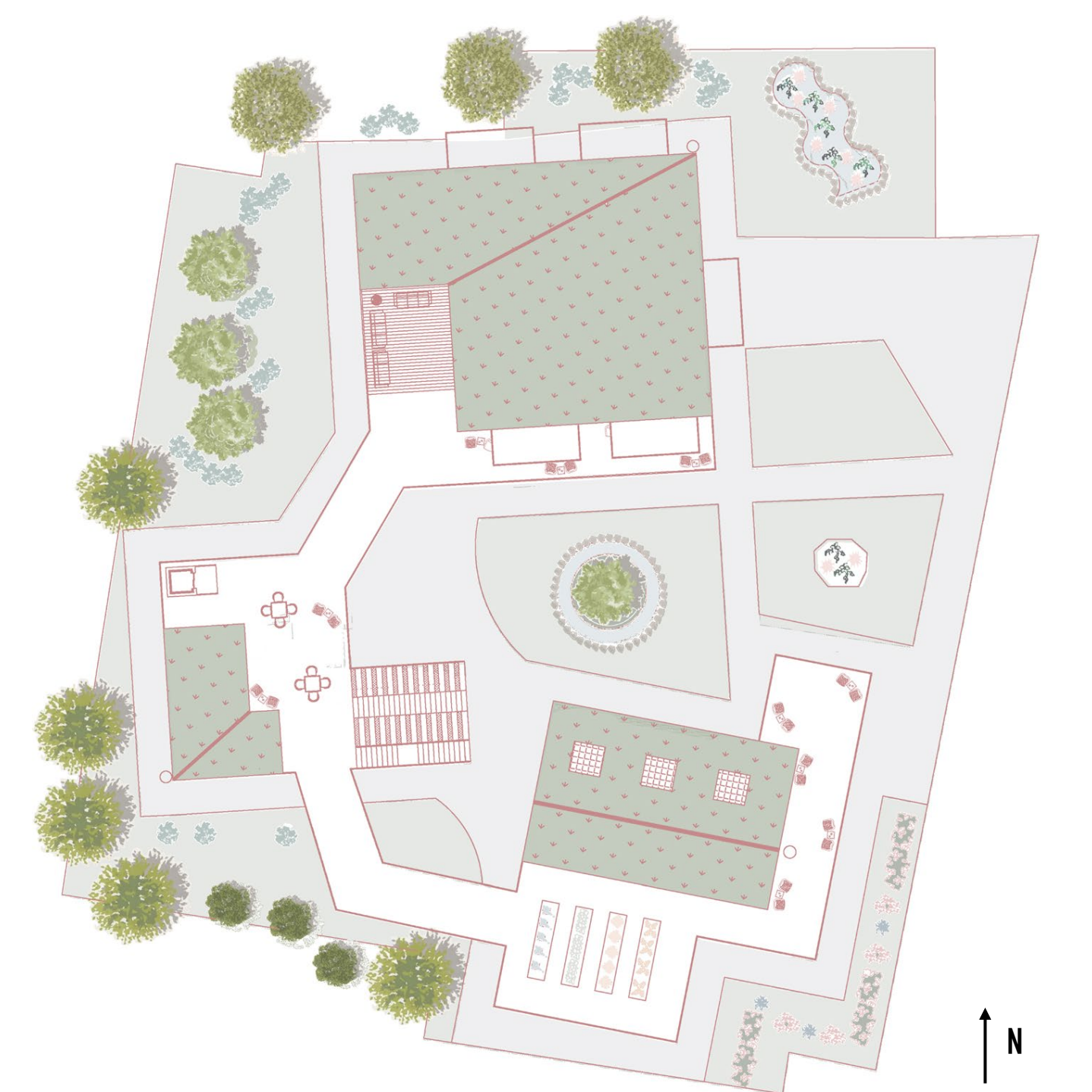
MASSING DIAGRAM



SECOND FLOOR

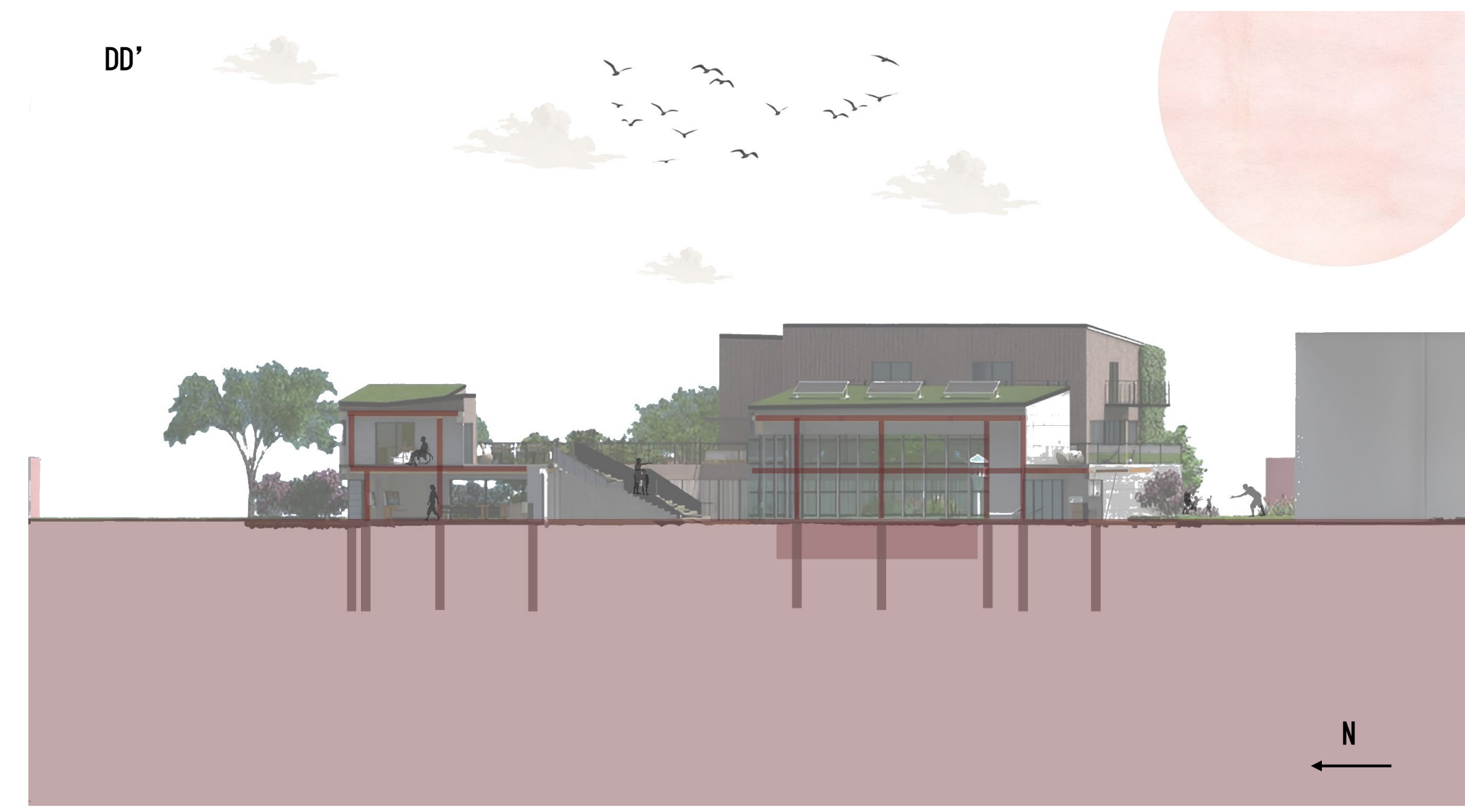
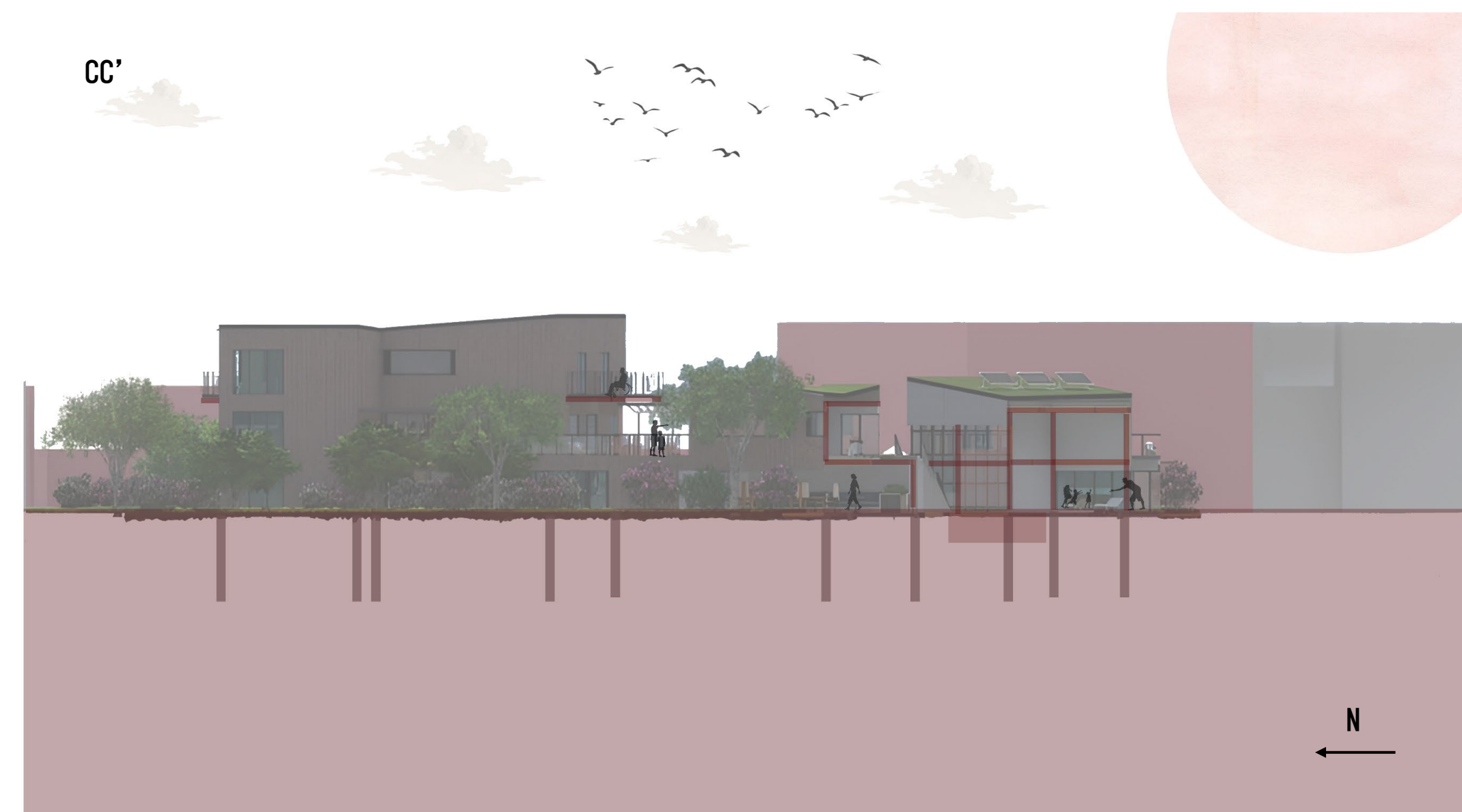


ROOF PLAN

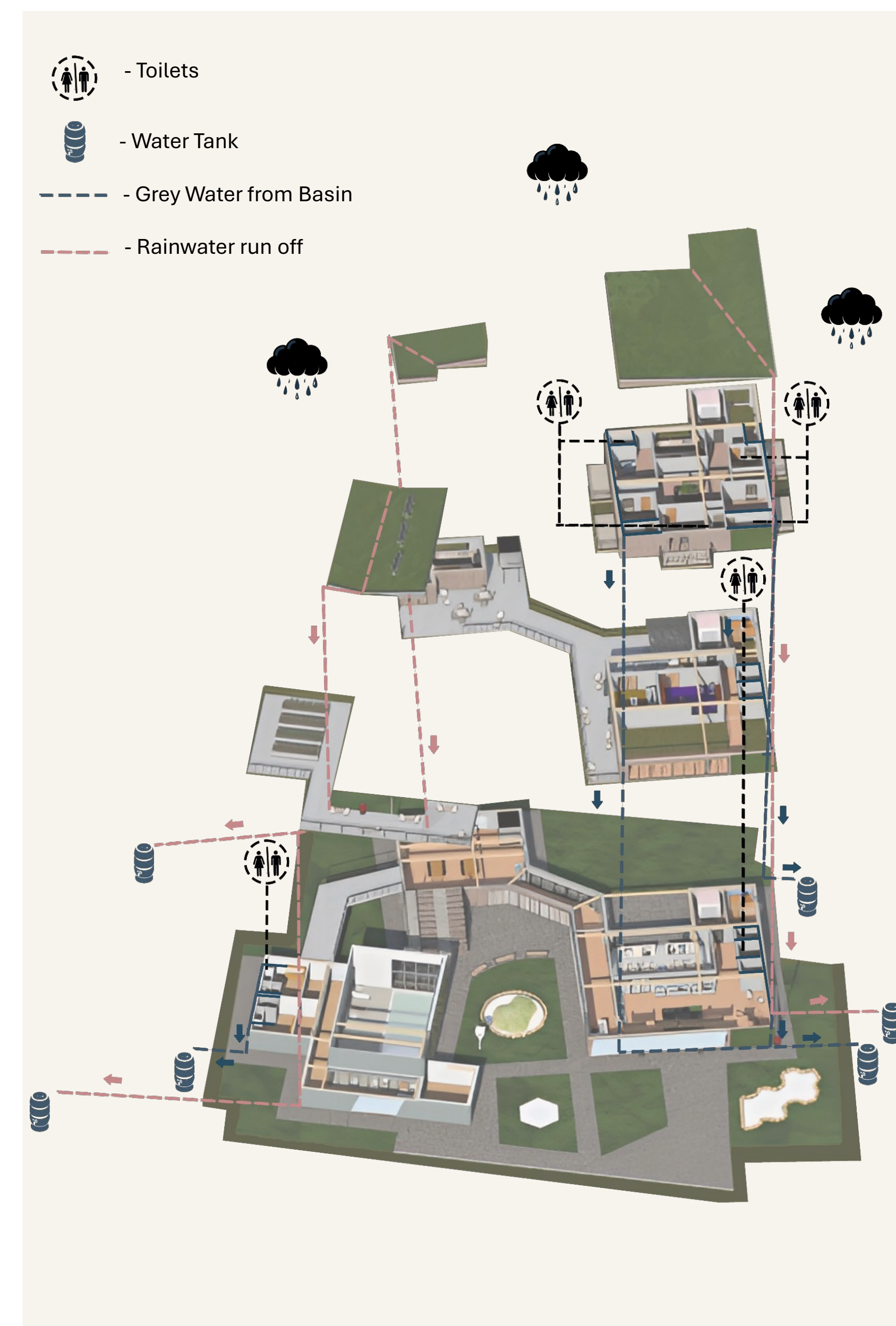


1. Reception
2. Seating area
3. Gallery
4. Glass walkway
5. Art studio
6. Swimming pool
7. Plant room
8. Changing rooms
9. Fire exit
10. Library
11. Therapy room
12. Overhead balcony
13. Balcony
14. Café
15. Bridge
16. Kitchen
17. Residential rooms

SECTIONS

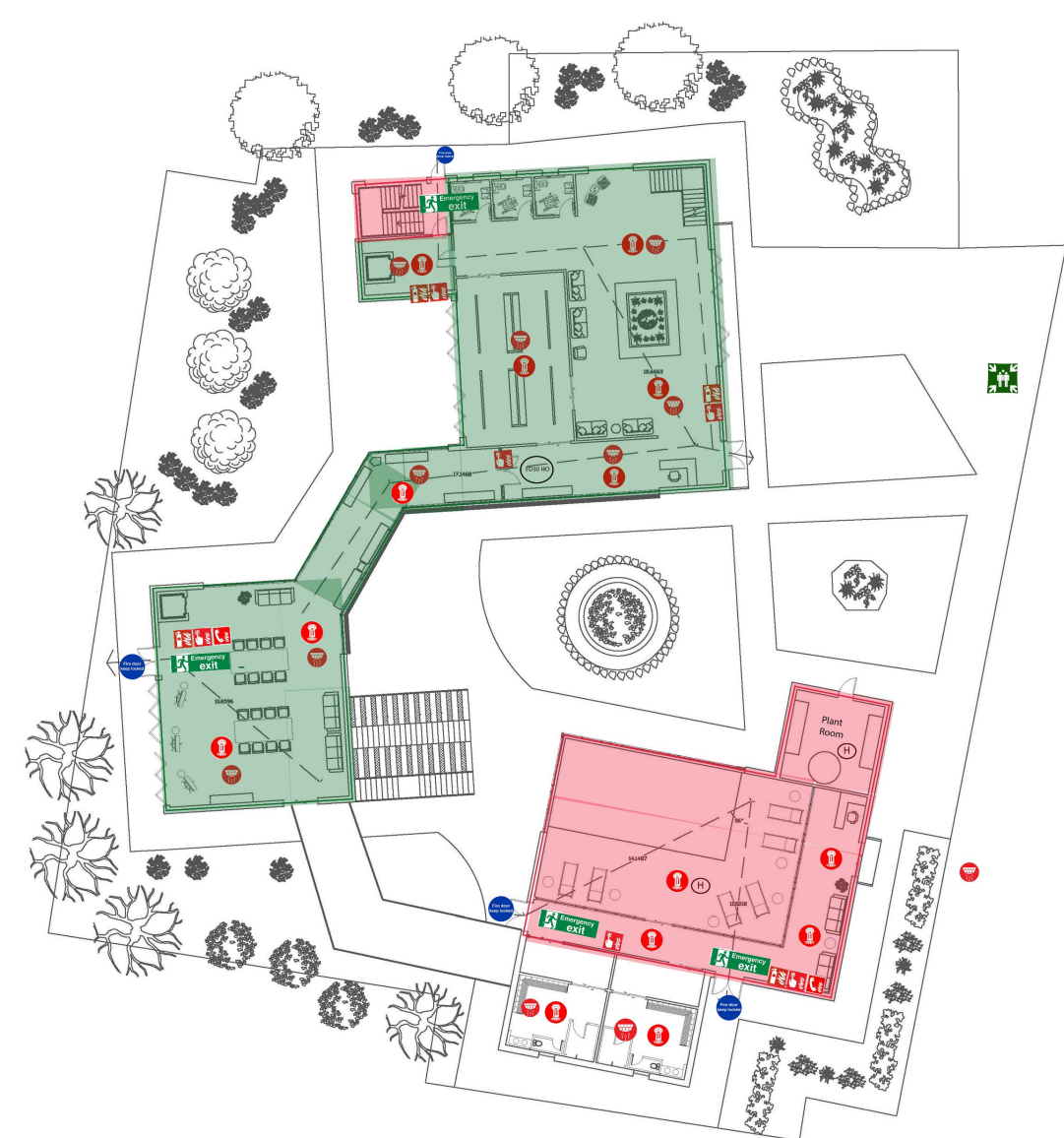


POTABLE AND GREY WATER SYSTEM

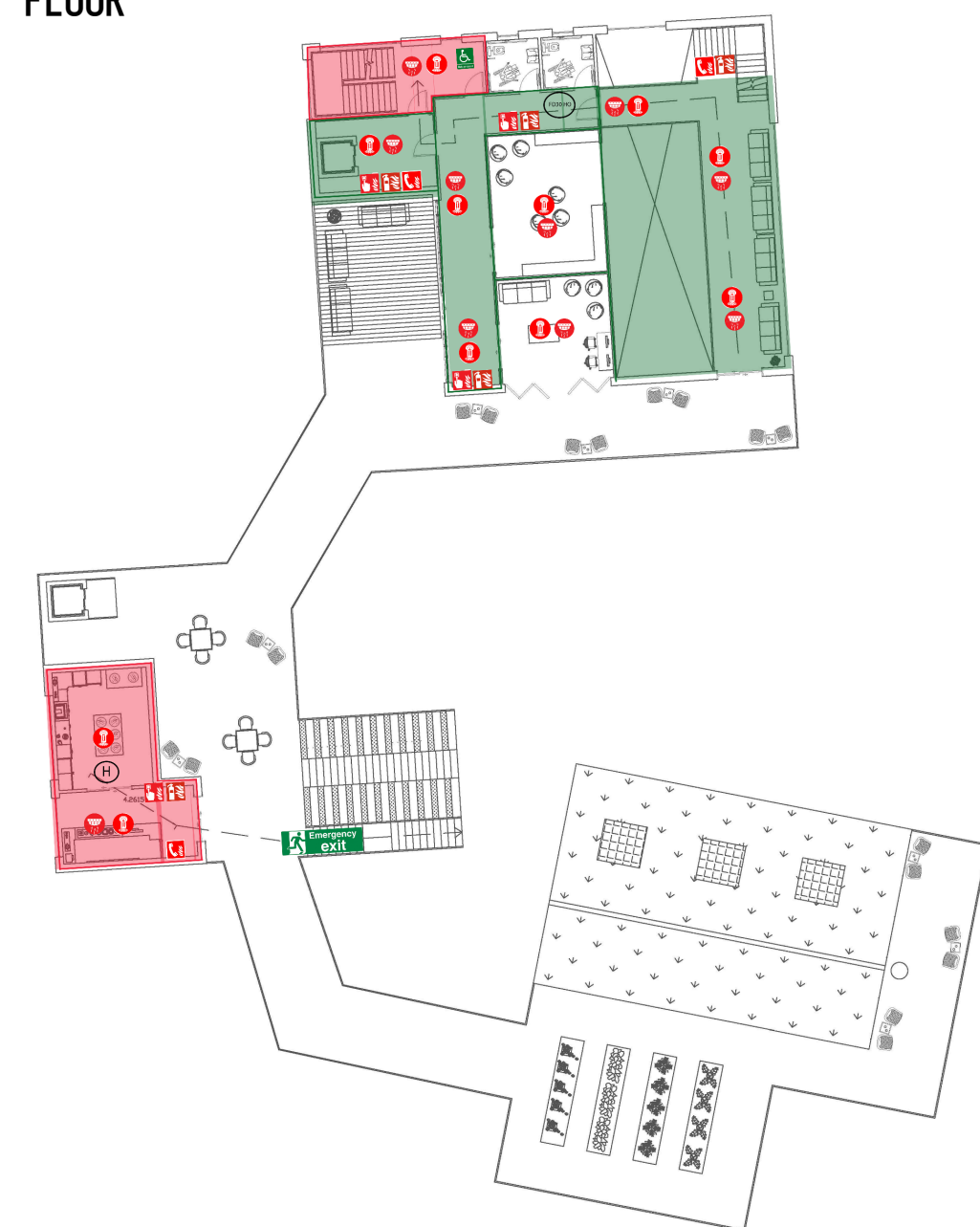


FIRE PLANS

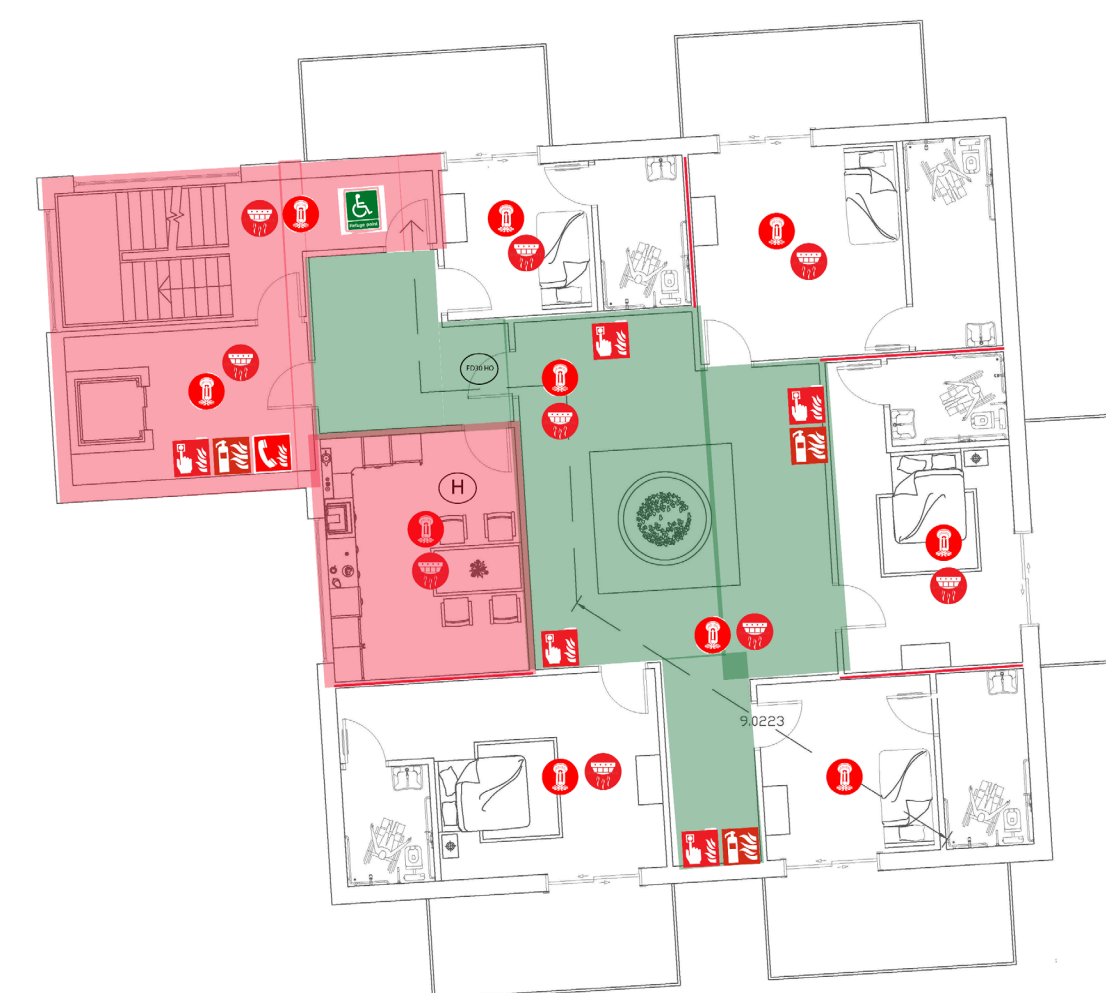
GROUND FLOOR



FIRST FLOOR

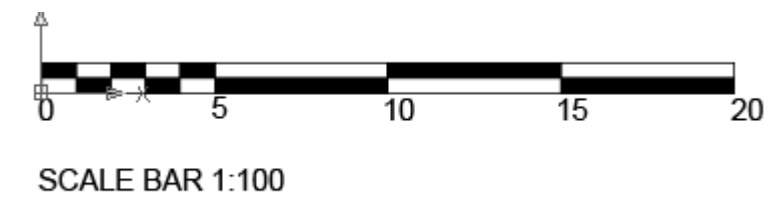
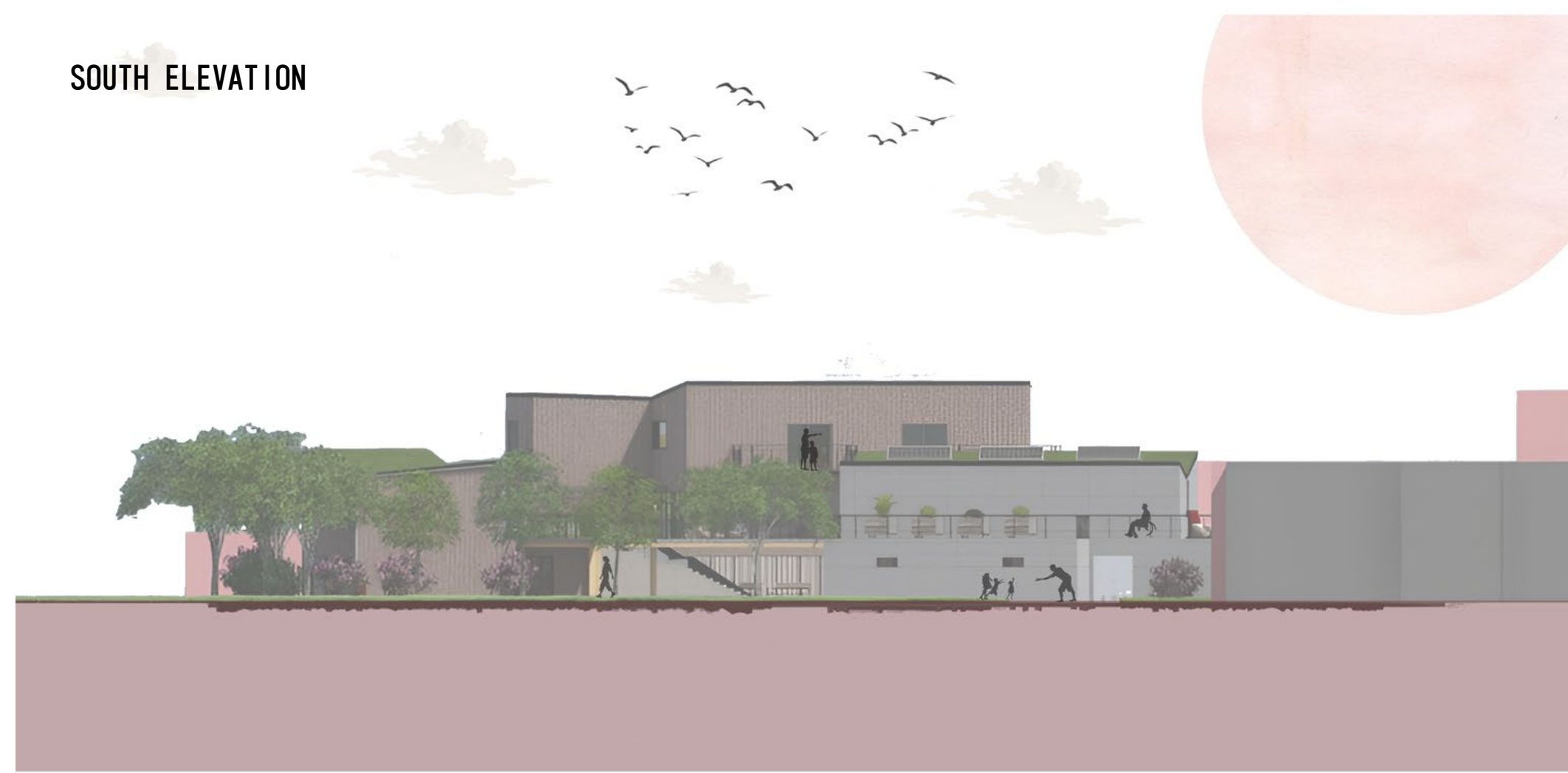


SECOND FLOOR

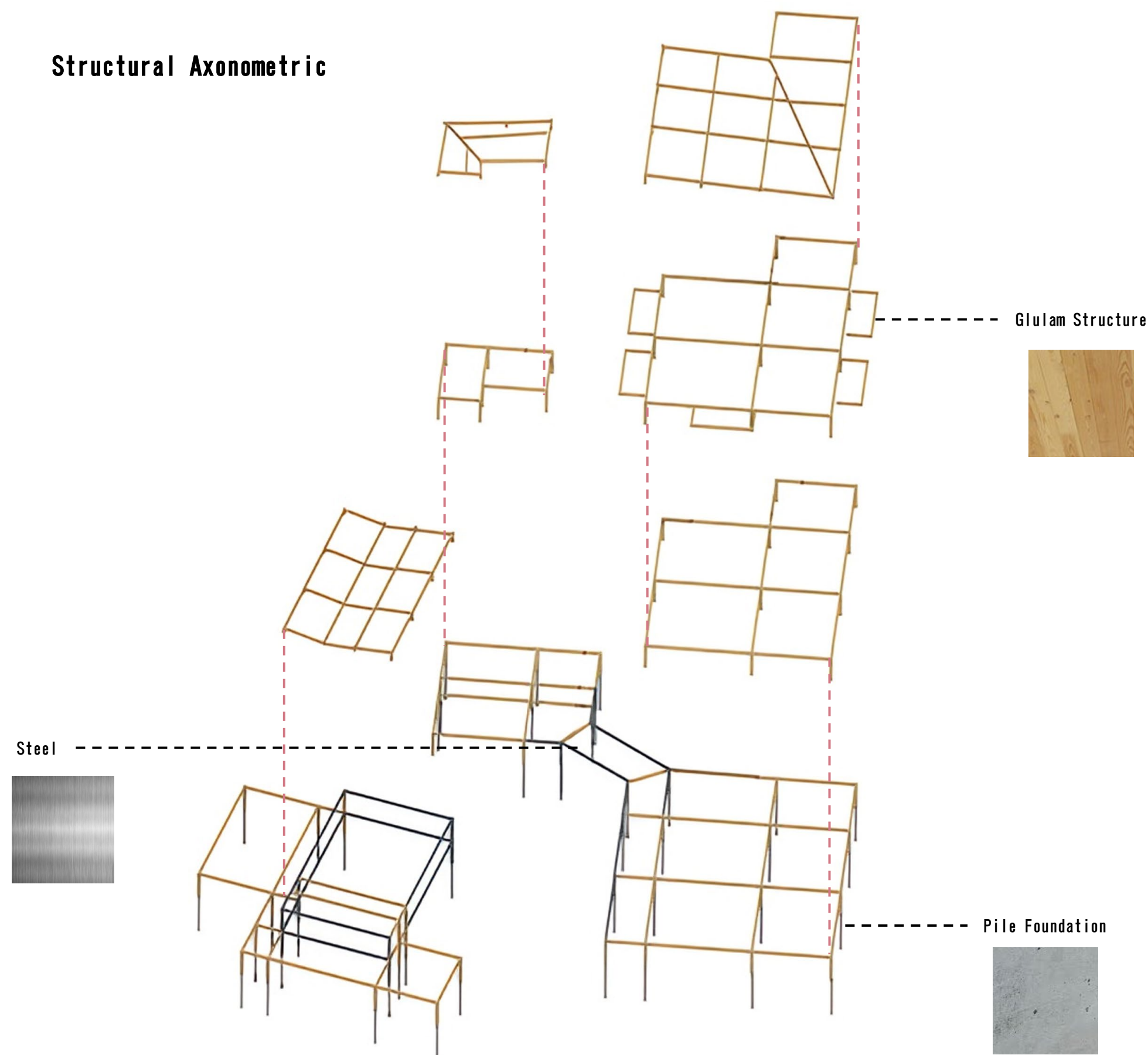


- Sprinkler
- Assembly Point
- Refuge Point
- Fire-Rated Door
- Emergency Exit
- Fire Alarm Call Point
- 1 Hour fire protected zone
- Fire Extinguisher
- Fire Emergency Telephone
- Smoke Detector
- Heat Detector
- Hold-open 30-min fire door, linked to alarm system
- 30 min fire-protected zone

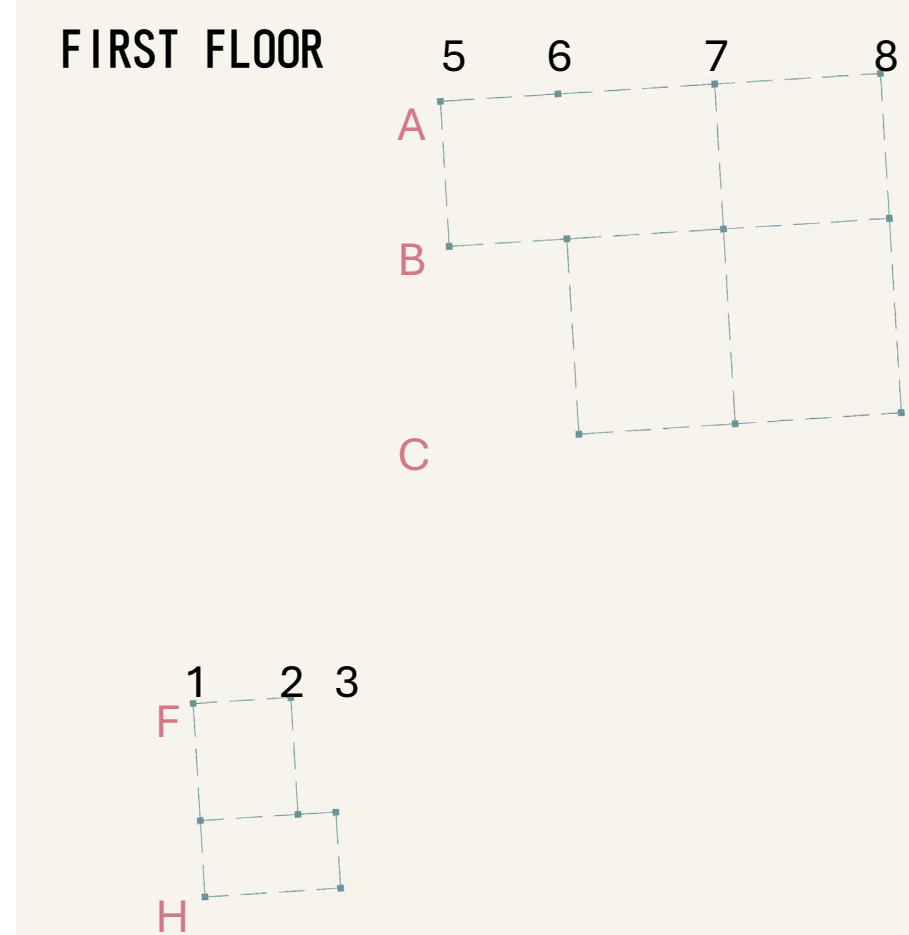
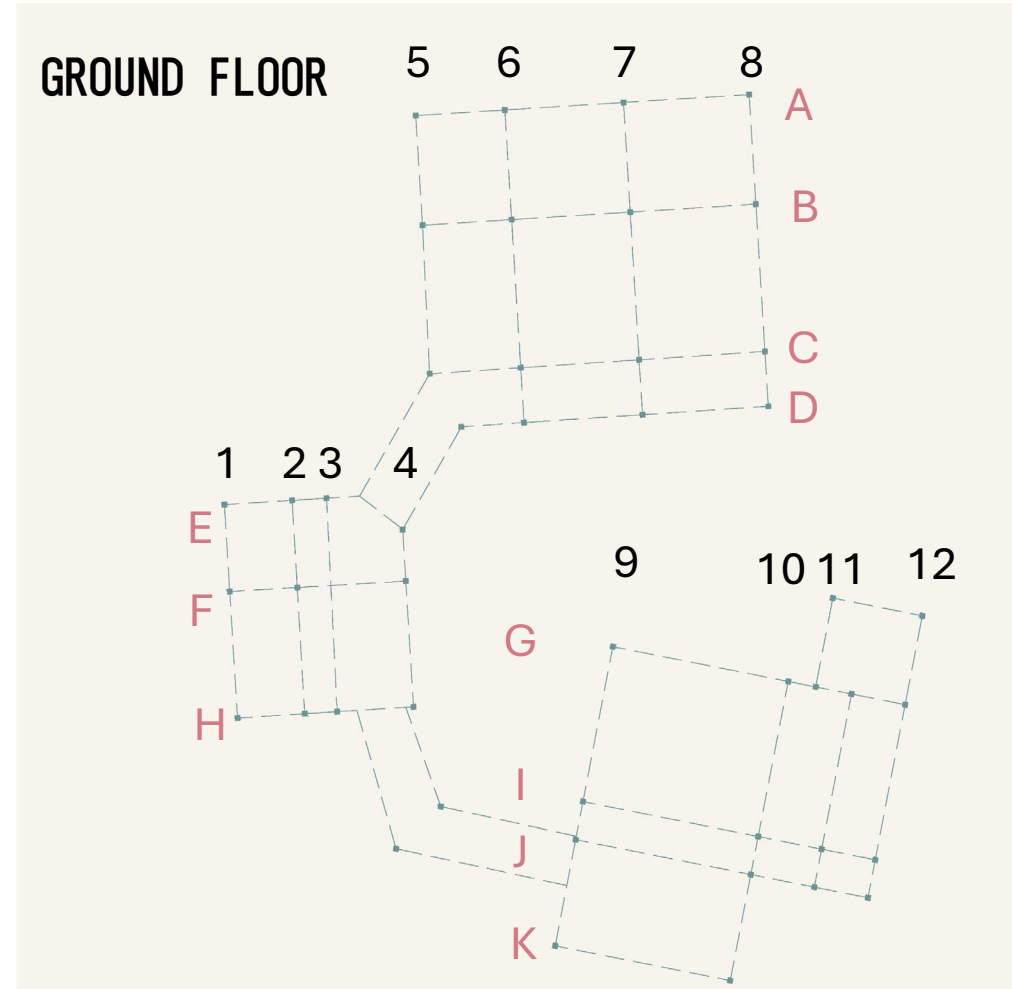
Elevations



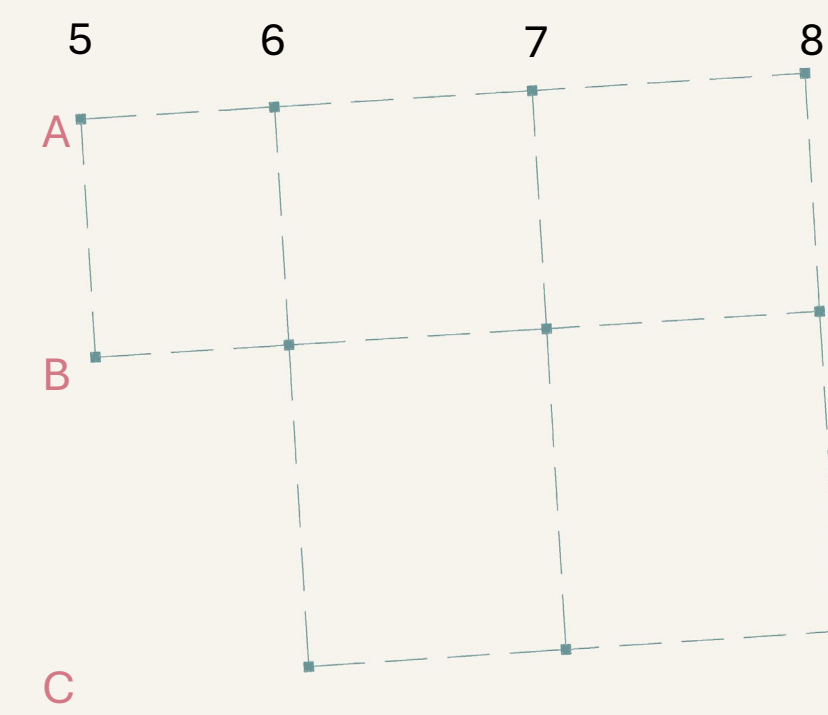
Structural Axonometric



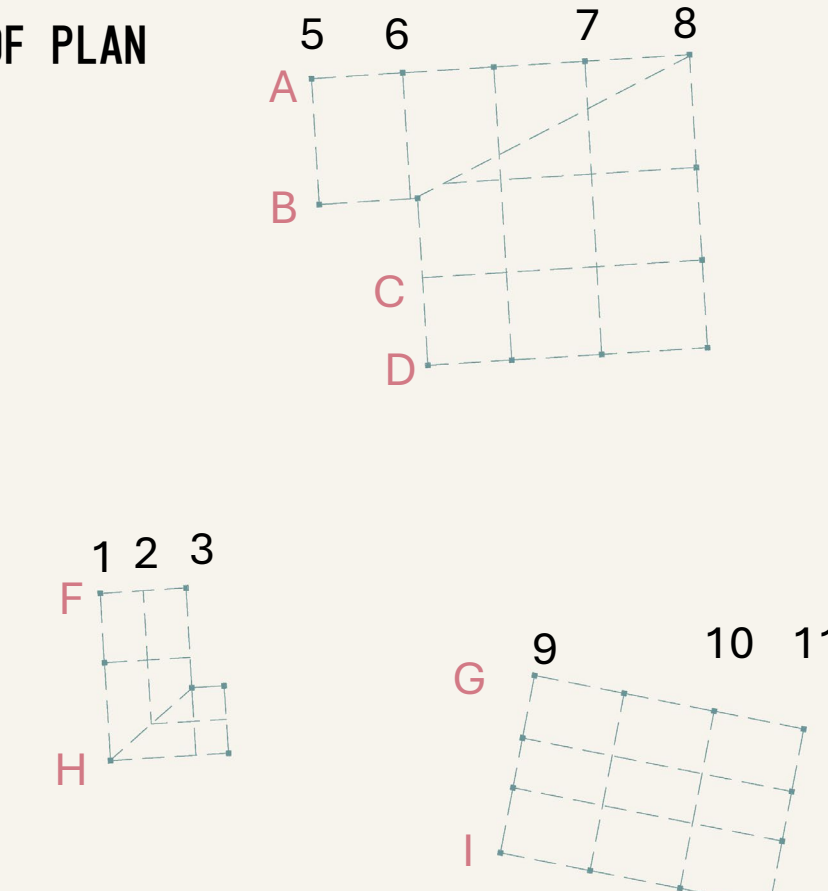
GRID STRUCTURE



SECOND FLOOR



ROOF PLAN



VENTILATION + SUNLIGHT

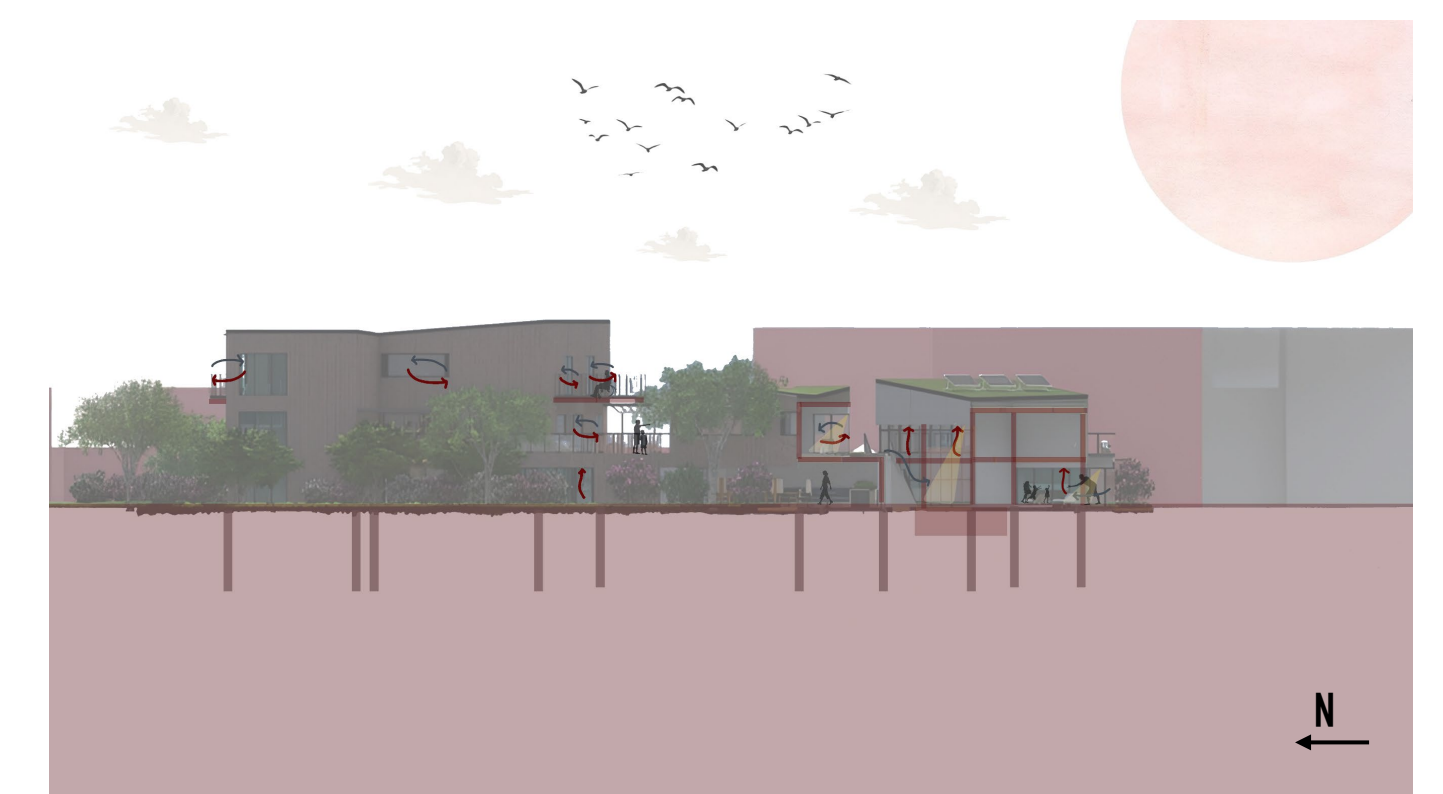
AA' – Cross + Passive Ventilation



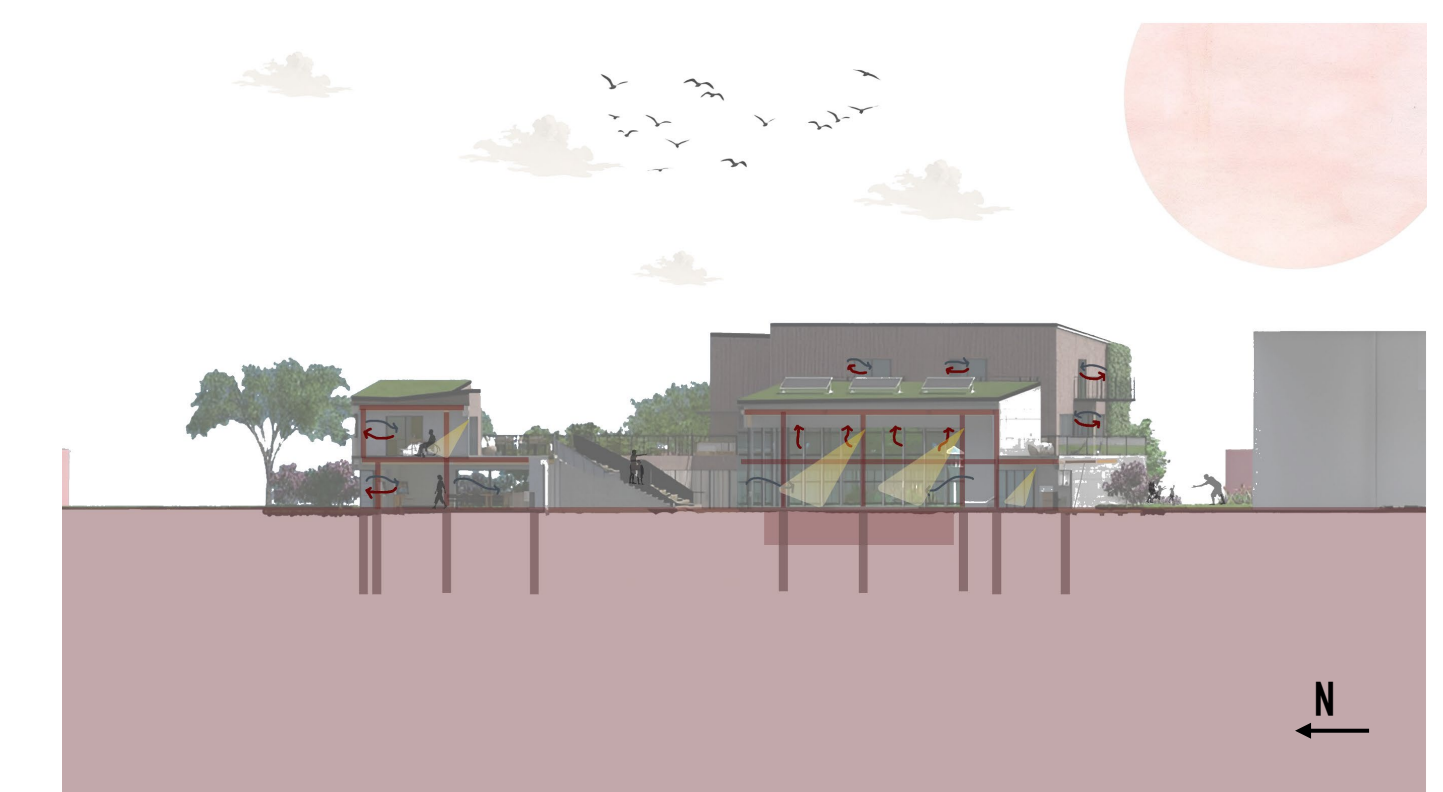
BB' – Hybrid Ventilation Strategy



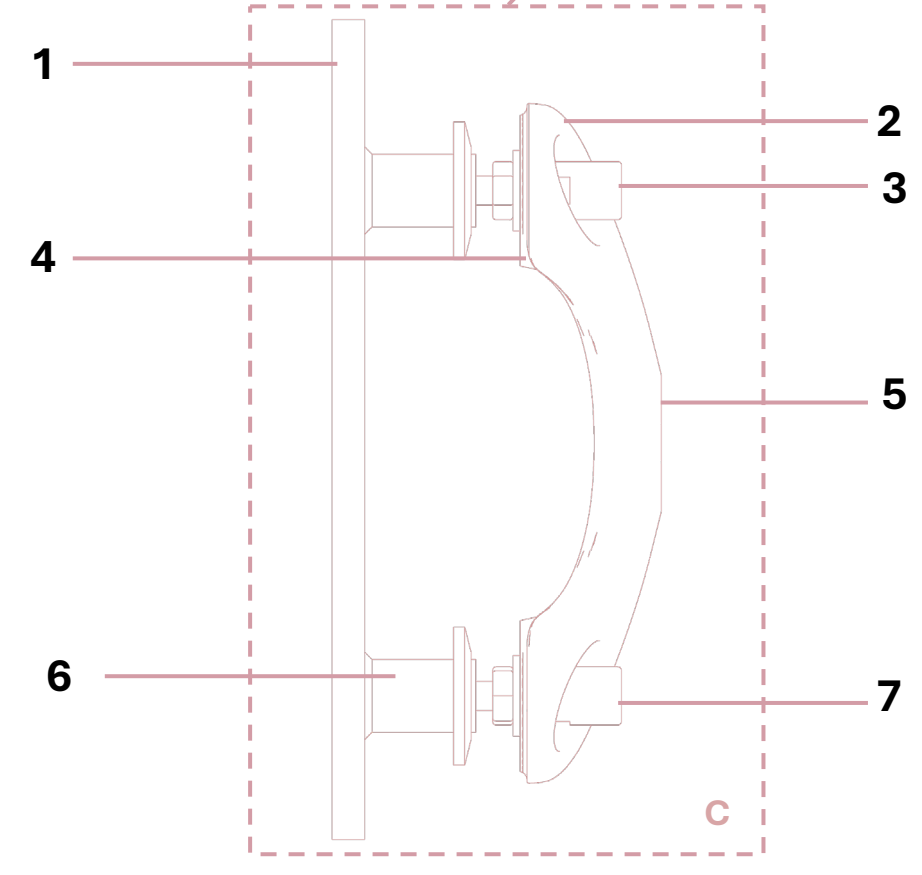
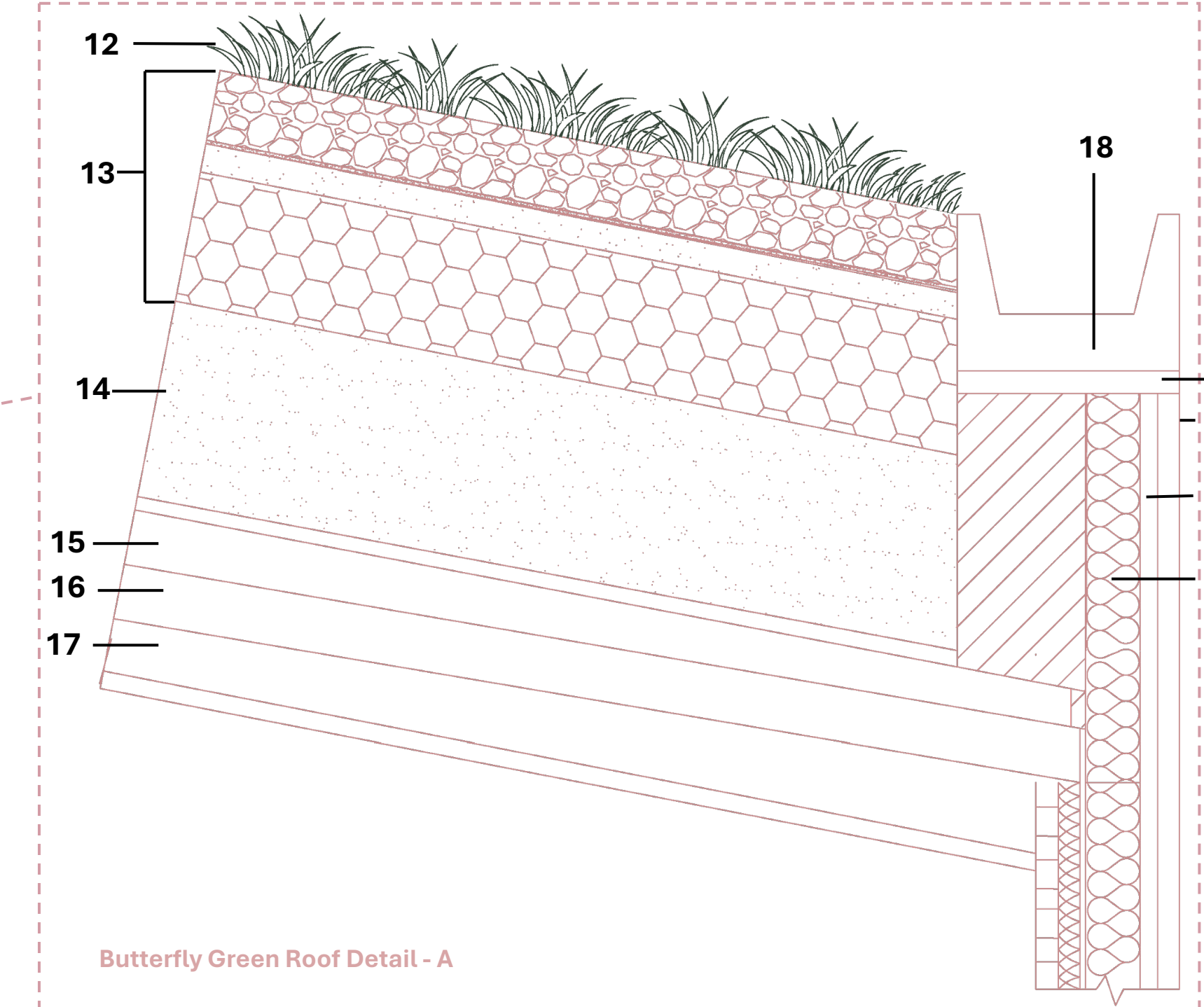
CC' – Stack-Assisted Ventilation + Passive Exhaust



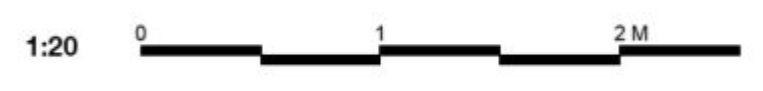
DD' – Courtyard-Assisted Passive Ventilation



FOUNDATION TO ROOF DETAIL

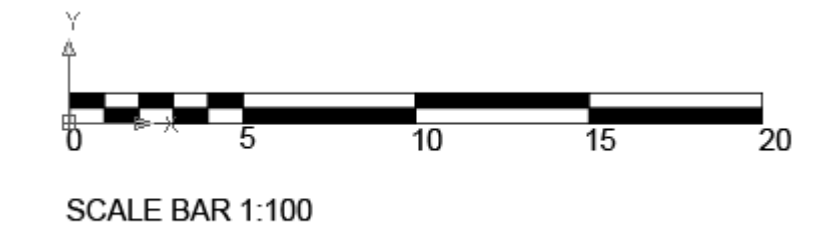
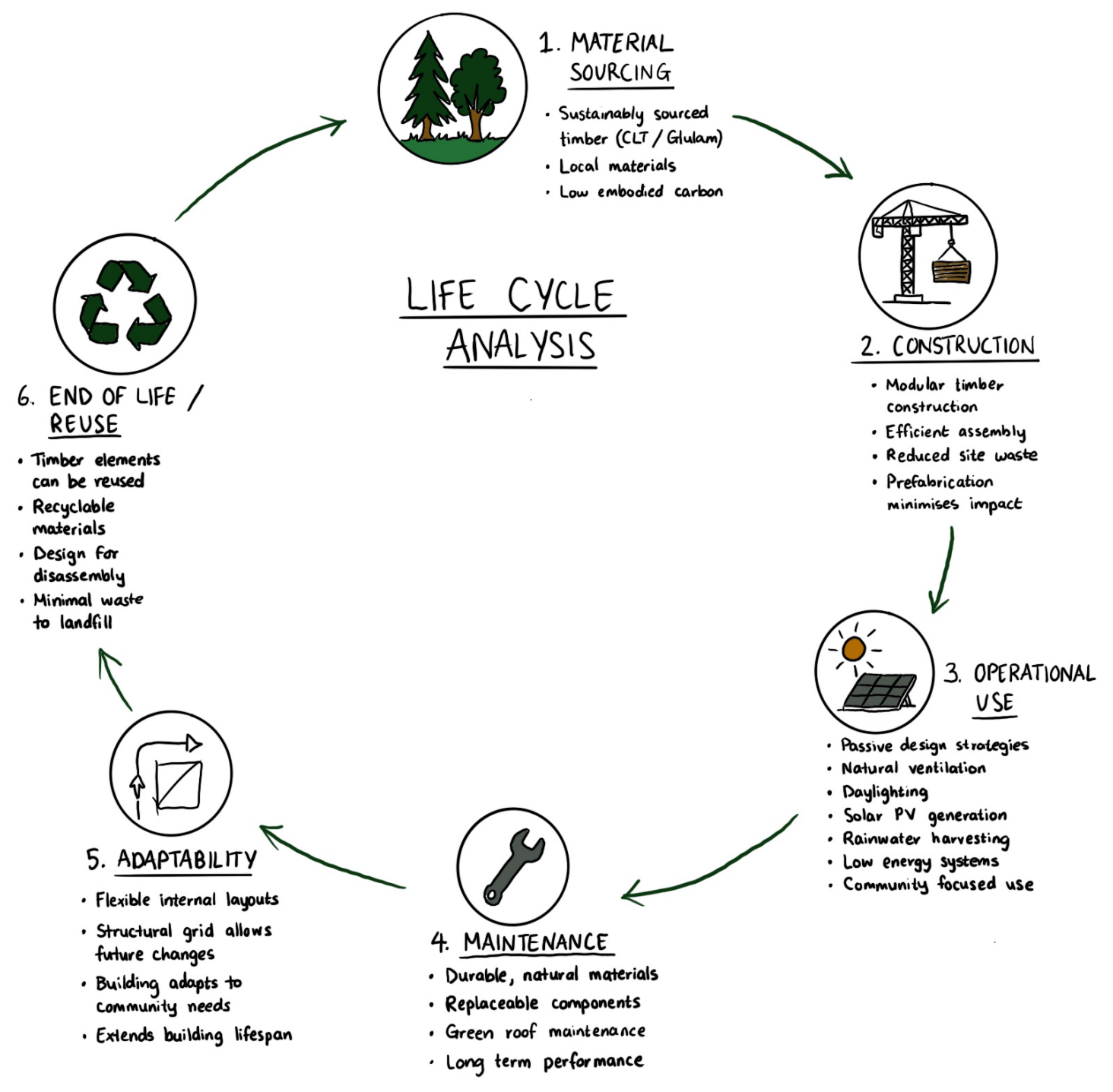
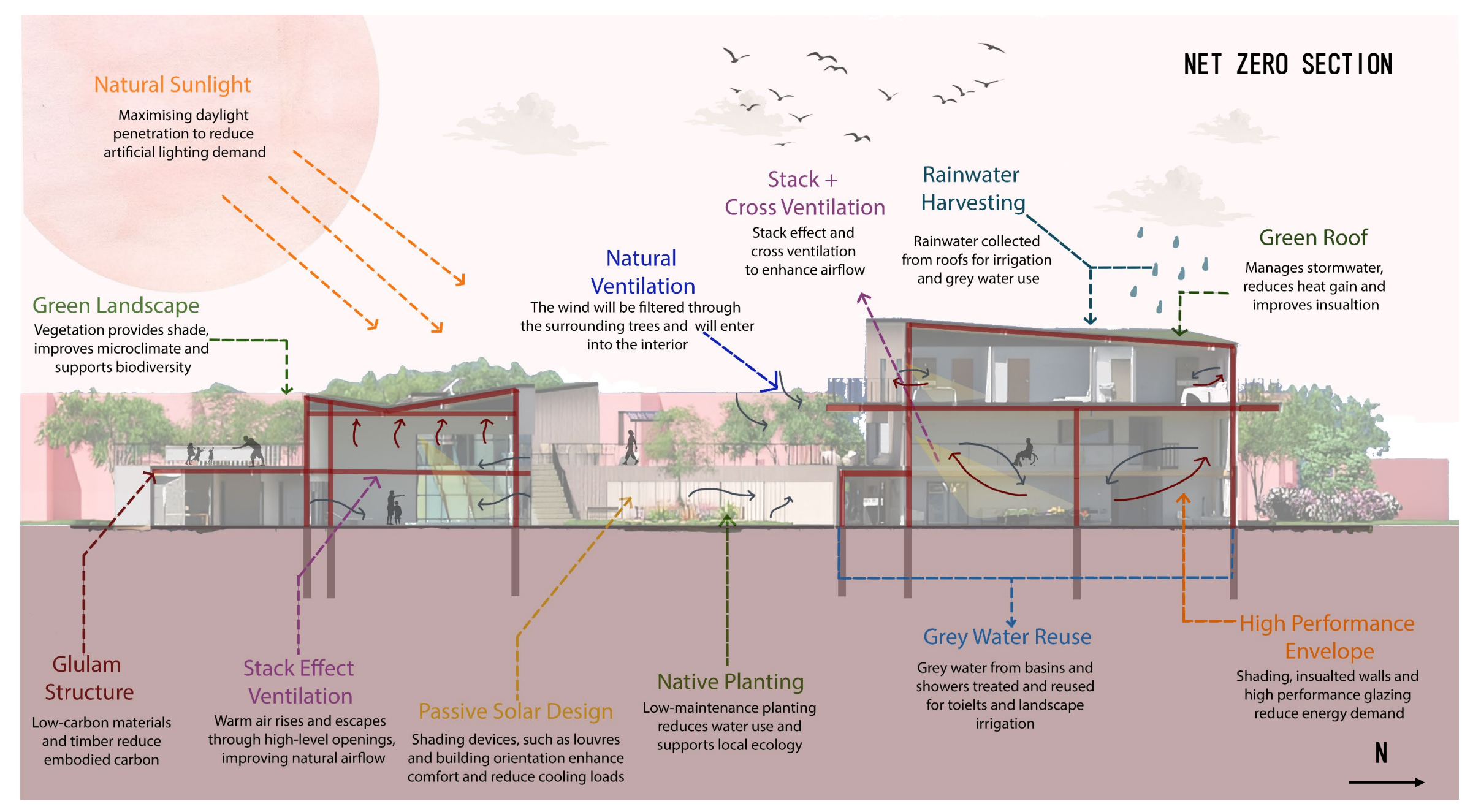
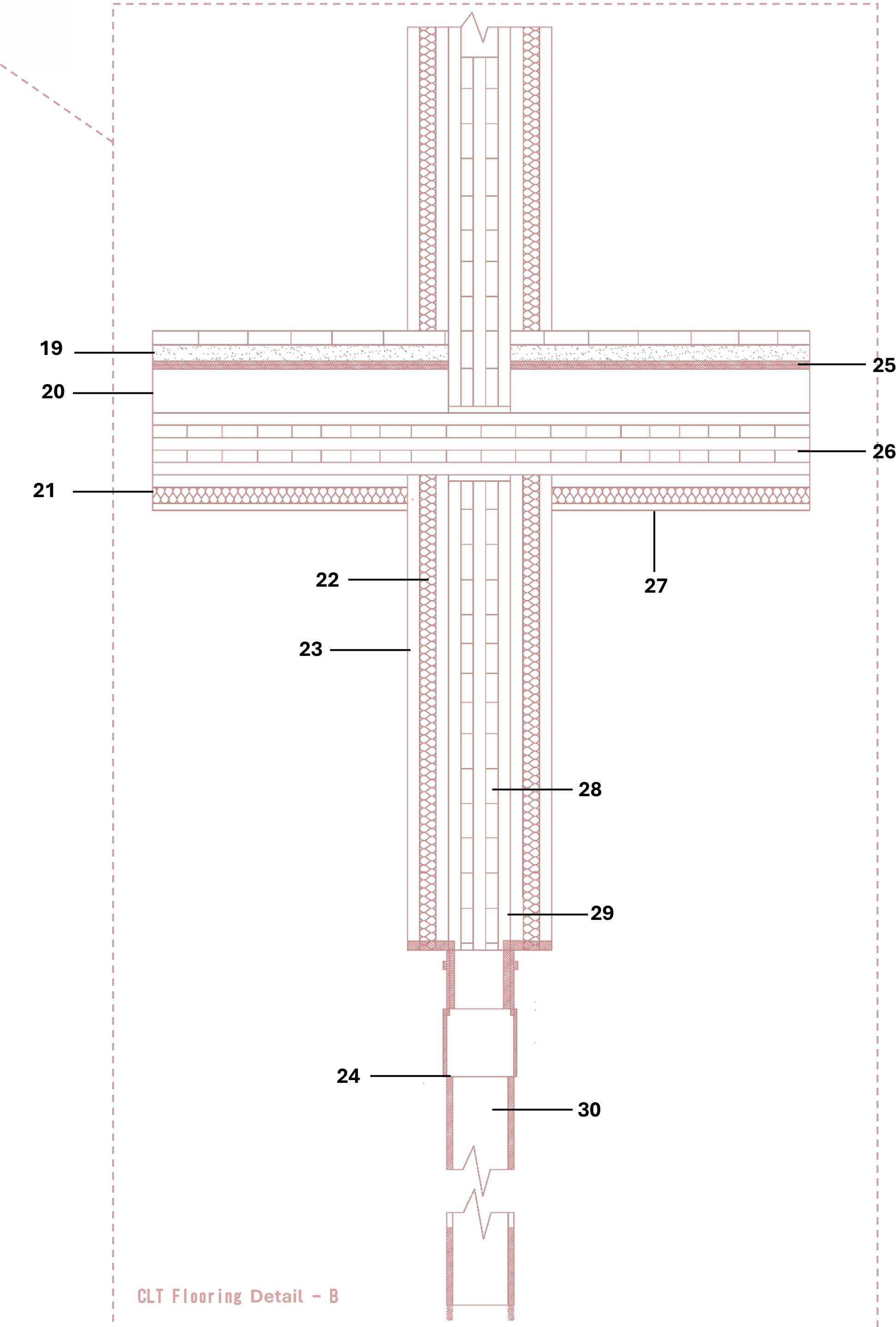


- Spider Glass Detail**
- 1 LAMINATED TOUGHENED GLASS
 - 2 STRUCTURAL SUPPORT
 - 3 HALF PLATE BRACKET
 - 4 SPIDER ARM
 - 5 SPIDER ARM CONNECTION BOLT
 - 6 STAINLESS STEEL CAP PLATE
 - 7 SPIDER BALL BOLT

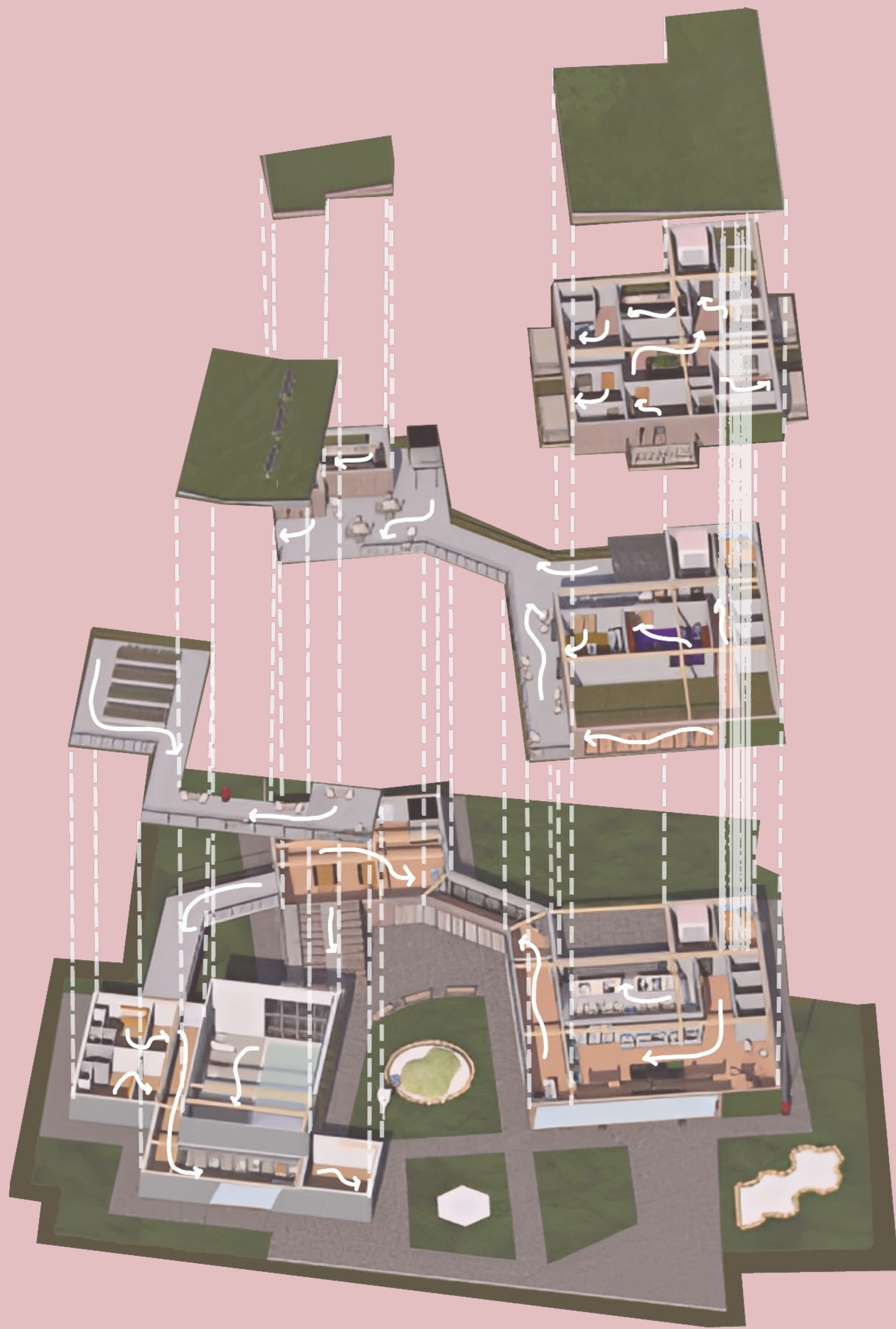




- Butterfly Green Roof Detail**
- 8 GRAVEL EDGE ZONE
 - 9 TERRACOTTA RAINSCREEN PANELS
 - 10 REAR VENTILATED CAVITY
 - 11 MINERAL WOOL INSULATION
 - 12 GROWING MEDIUM
 - 13 GREEN ROOF BUILD-UP
 - 14 DRAINAGE & ROOT BARRIER
 - 15 CLT STRUCTURAL DECK
 - 16 RIGID INSULATION
 - 17 SERVICE VOID
 - 18 PIPE

- CLT Flooring Detail**
- 19 WOODEN FLOOR PANEL
 - 20 LIGHTWEIGHT INFILL LAYER
 - 21 AIR
 - 22 STONEWOOL
 - 23 GYPSUM FIBREBOARD
 - 24 PILE CAP
 - 25 SAND AND CEMENT SCREED
 - 26 CLT PANELS
 - 27 PLASTERBOARD
 - 28 STRUCTURAL TIMBER COLUMN
 - 29 STEEL PLATE
 - 30 CONCRETE PILE

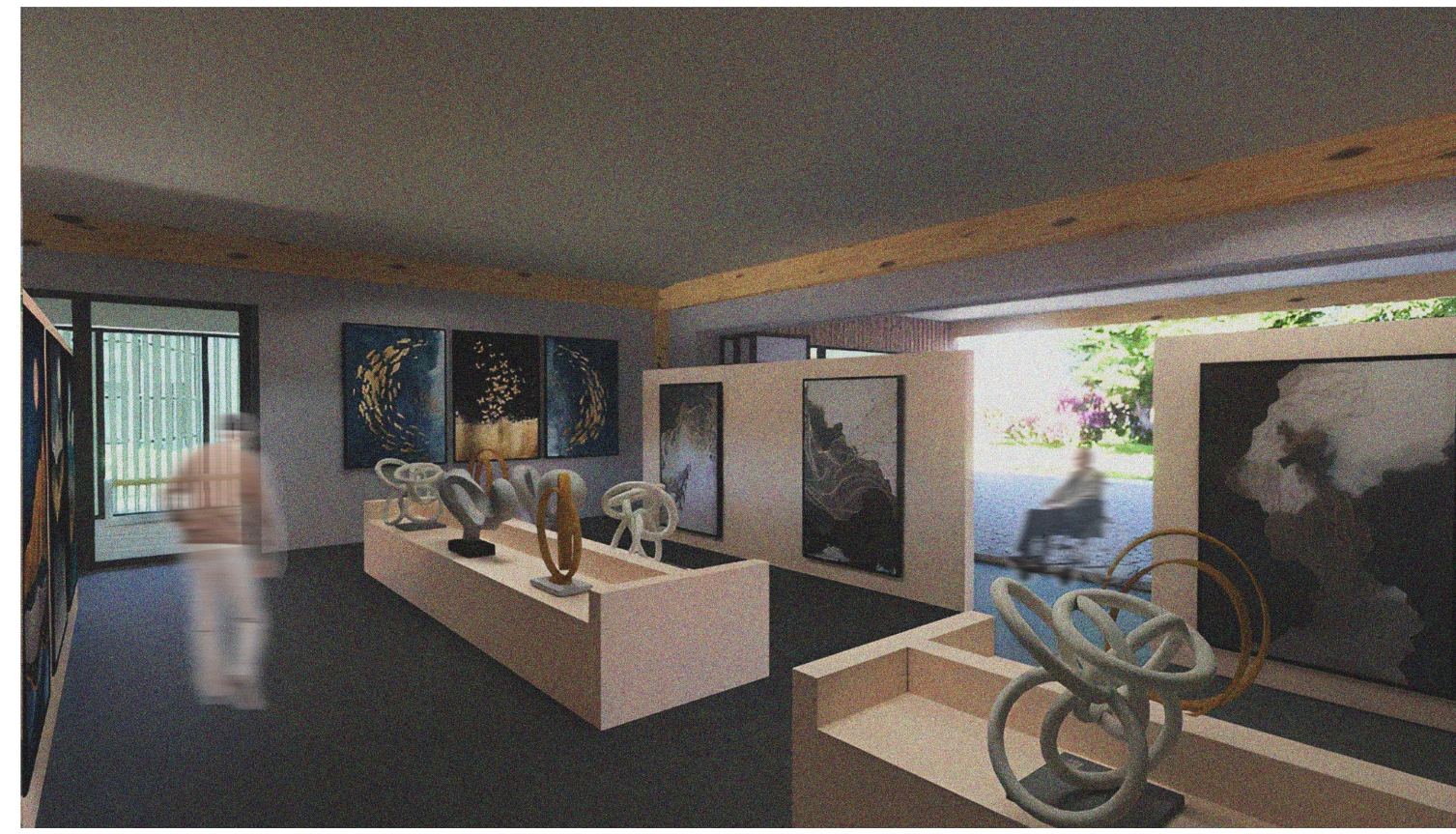


CIRCULATION



-  - Horizontal Connectivity
-  - Vertical Connectivity

Interior Renders



Bifold doors connecting the gallery space with the surrounding nature



Double-height pool space



Glass walkway shaded by adjustable louvres



Bifold door opening into a double-height ceiling space, increasing natural ventilation



Overlooking courtyard

3D Physical Model

