

Site Analysis Mill Hill

Medieval Period (5th-15th Century)
11th-13th Century: The site was a small village, the site of the Mill Hill Manor, which was a large manor house with a park and a mill. The site was a small village, the site of the Mill Hill Manor, which was a large manor house with a park and a mill.

Early Modern Period (16th-18th Century)
17th Century: The site was a small village, the site of the Mill Hill Manor, which was a large manor house with a park and a mill. The site was a small village, the site of the Mill Hill Manor, which was a large manor house with a park and a mill.

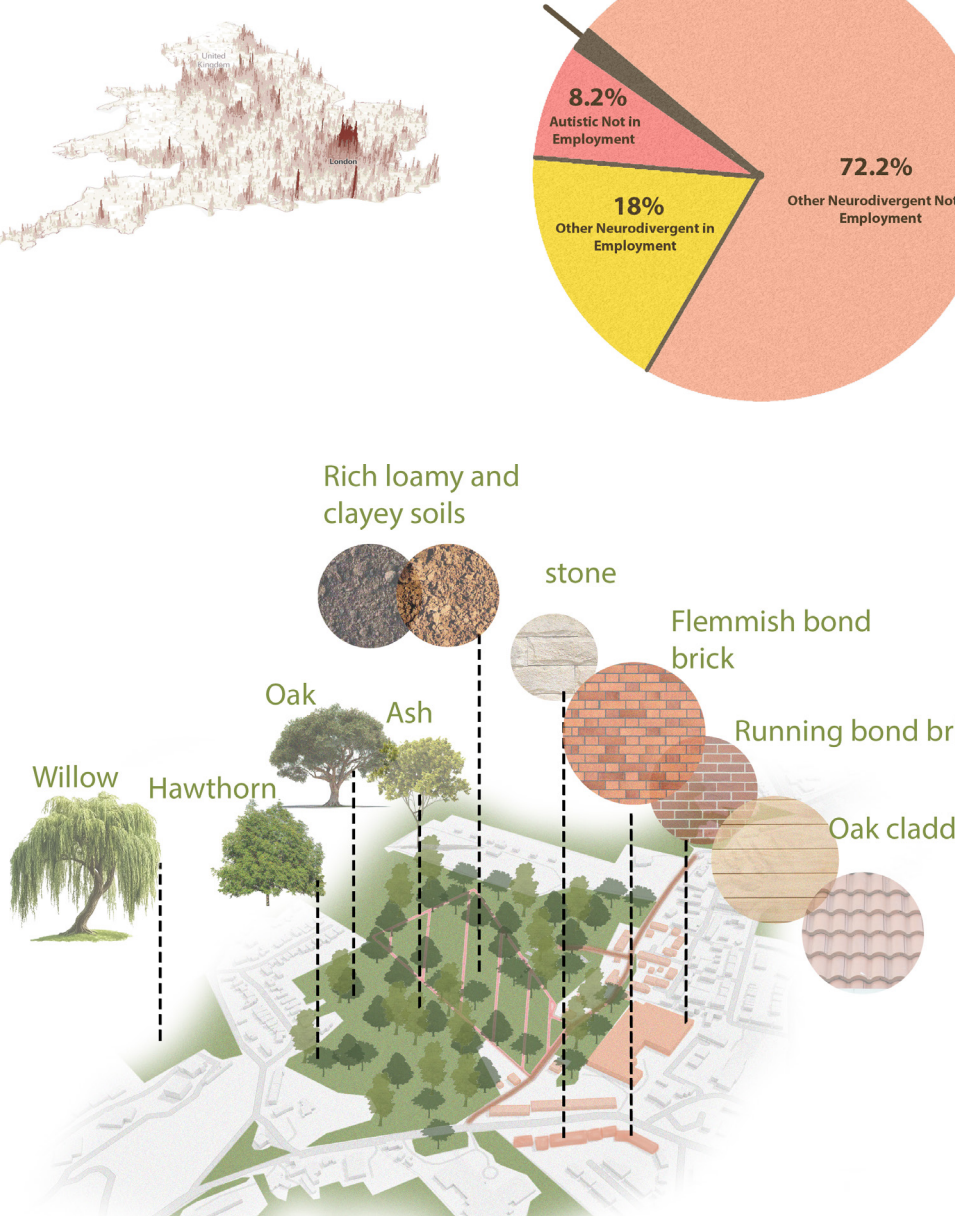
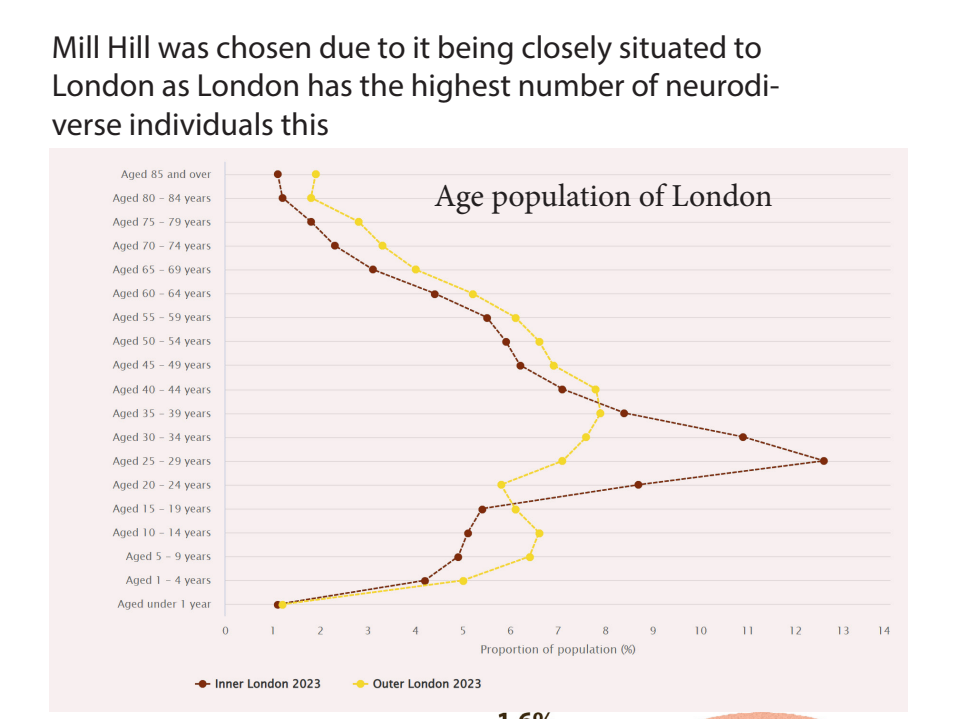
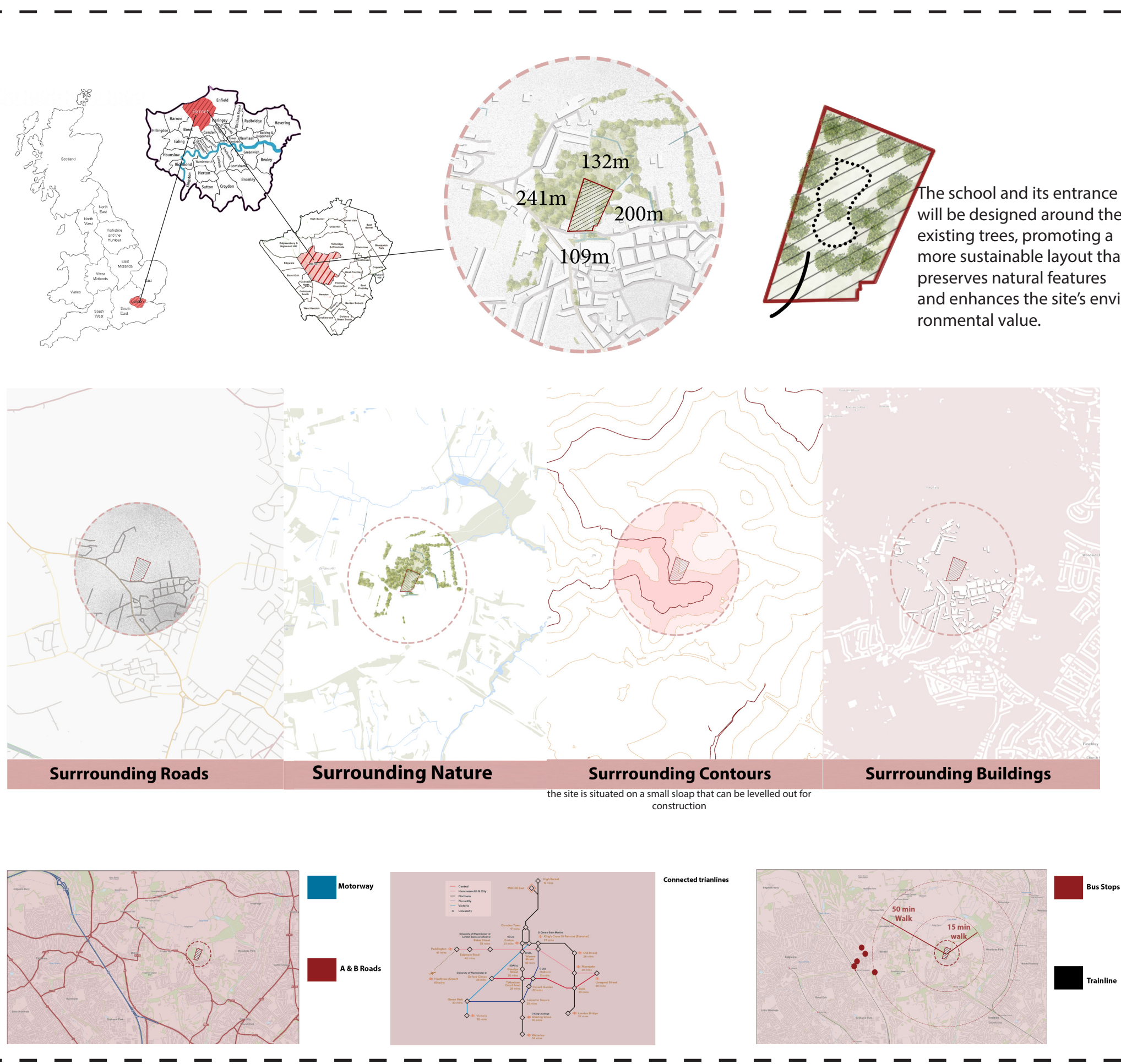
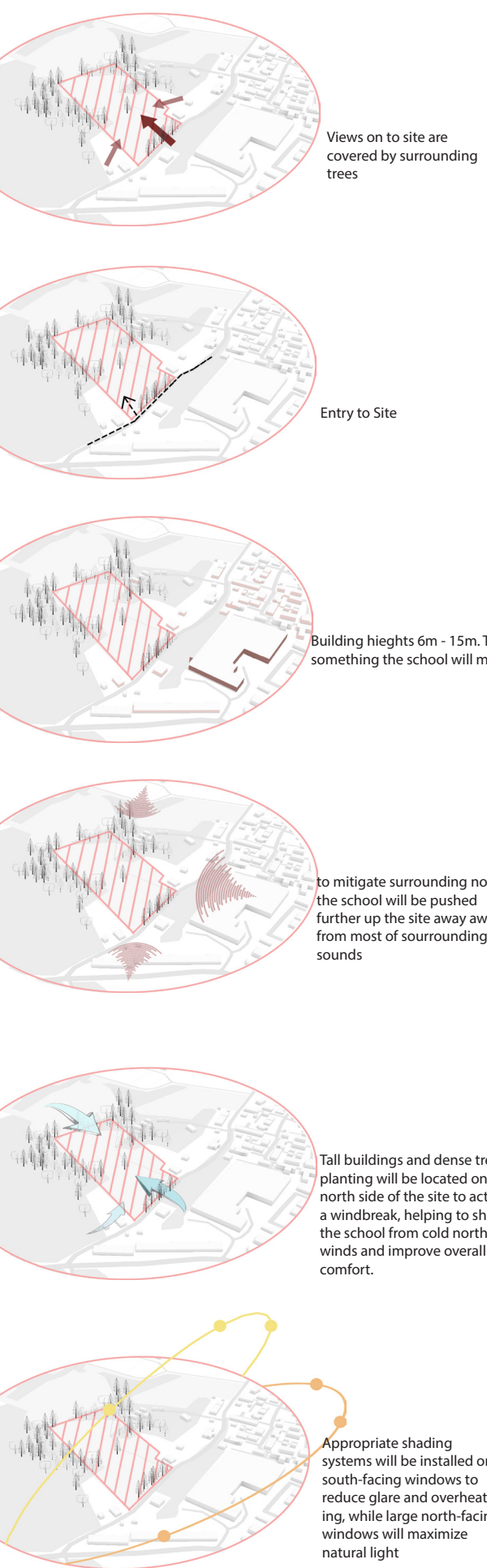
19th Century: Industrialization and Growth
18th Century: The arrival of the railway in 1825 marked a key moment in the site's history. The site was a small village, the site of the Mill Hill Manor, which was a large manor house with a park and a mill.

20th Century: Urbanization and Expansion
1920s-1930s: The site was a small village, the site of the Mill Hill Manor, which was a large manor house with a park and a mill. The site was a small village, the site of the Mill Hill Manor, which was a large manor house with a park and a mill.

Late 20th and Early 21st Century
1970s-1980s: The site was a small village, the site of the Mill Hill Manor, which was a large manor house with a park and a mill. The site was a small village, the site of the Mill Hill Manor, which was a large manor house with a park and a mill.

Mill Hill is a suburban area in the London Borough of Barnet, located in North London. It is known for its green spaces, village-like atmosphere, and a mix of historic and modern architecture. The area includes Mill Hill Village, one of London's oldest villages, and Mill Hill Broadway, the main commercial hub with shops, cafes, and transport links. It is home to several prestigious schools, including Mill Hill School, and large open spaces such as Arrandene Open Space and the Tottenham Valley. Mill Hill also has strong transport connections, with Thameslink services providing access to central London.

Notable Events and Developments:
Mill Hill School (1887): Founded in 1887, Mill Hill School is one of the oldest and most prestigious independent schools in London. The school has played a significant role in the local community and in shaping the area's history.
Mill Hill East (1920s): Mill Hill East, once a separate village, developed around the railway station and became an integral part of the overall suburban expansion of Mill Hill.



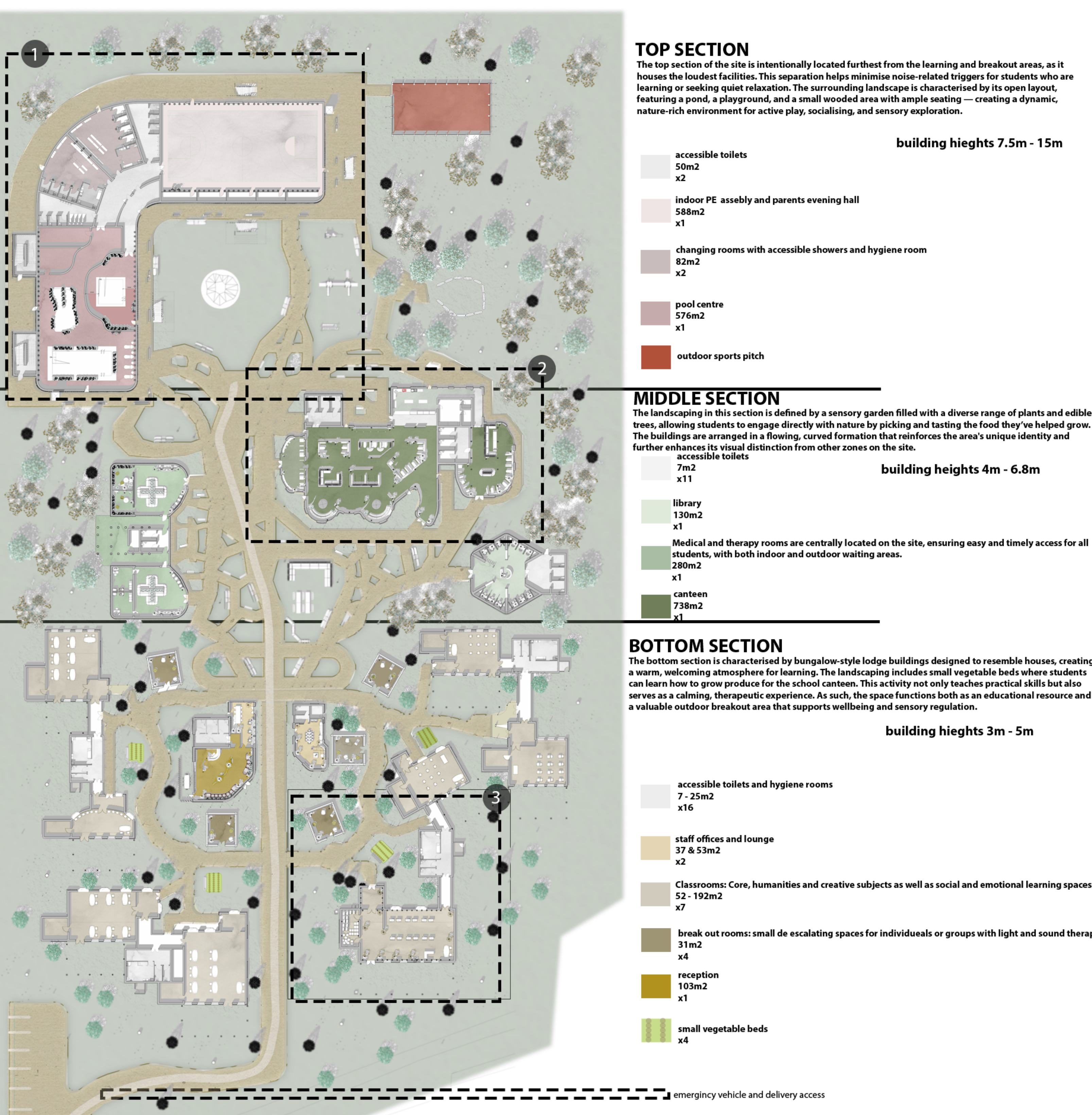
MATERIALS
Most of the same materials will be used throughout the project to ensure a consistent aesthetic without abrupt transitions. However, variations in the form or detailing of these materials will be introduced to subtly differentiate the distinct sections of the site.

SITE FLOOR PLAN
The concept behind the site layout is based on dividing the school into three distinct zones — Sections bottom, middle and top. Each zone features different facade treatments, building heights and landscaping styles, helping students visually distinguish between different areas of the campus. In addition to this, every individual building has its own distinct aesthetic, creating a layered wayfinding system that supports intuitive navigation. This approach makes it easier for the students, to recognise where they are and confidently find their way to the correct rooms. The decision to have separate buildings instead of using internal corridors is to help reduce sensory overload for neurodiverse primary students. It creates calmer, clearer transitions between spaces, supports emotional regulation, and makes navigation easier by giving each building a distinct identity.

1:500

- MATERIALS USED THROUGHOUT THE WHOLE SITE**
- stone blocks at the bottom of each building to protect wooden facade
 - glulam beams and columns
 - flemish bond bricks
 - green carpets
 - barrel clay rooftops
 - mineral wall insulation
 - interior oak cladding
 - timber roofs
 - brushed concrete for outdoor pathways

- MATERIALS USED WITHIN THE DIFFERENT SECTIONS**
- triple glazing
 - branch shaped Glulam columns
 - wavy cut slats for external facade
 - pool tiles
 - vinyl wooden pool flooring
 - interior stone walls
 - PE hall wooden flooring
 - straight wooden slats
 - triple glazing
 - vertical log cladding
 - double glazing



Aims and Concepts

PART BB 104

In the UK, BB104 provides non-statutory design guidelines for schools serving students with SEND and its alternative provision. Part B covers site considerations like outdoor PE spaces, social areas, and habitat zones.

Under BB104, this school is categorized as a special school, meaning it is designed specifically to support students with special educational needs and disabilities (SEND), with tailored facilities, spaces, and environments that meet a wide range of physical, sensory, and learning requirements.

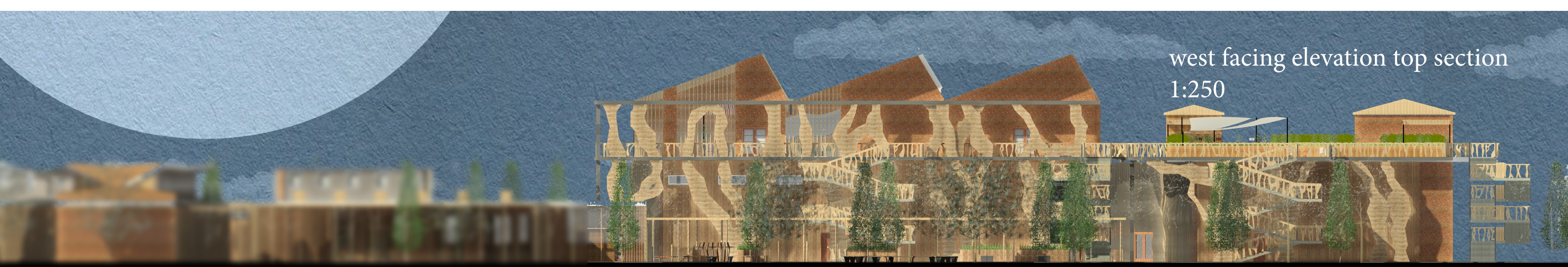
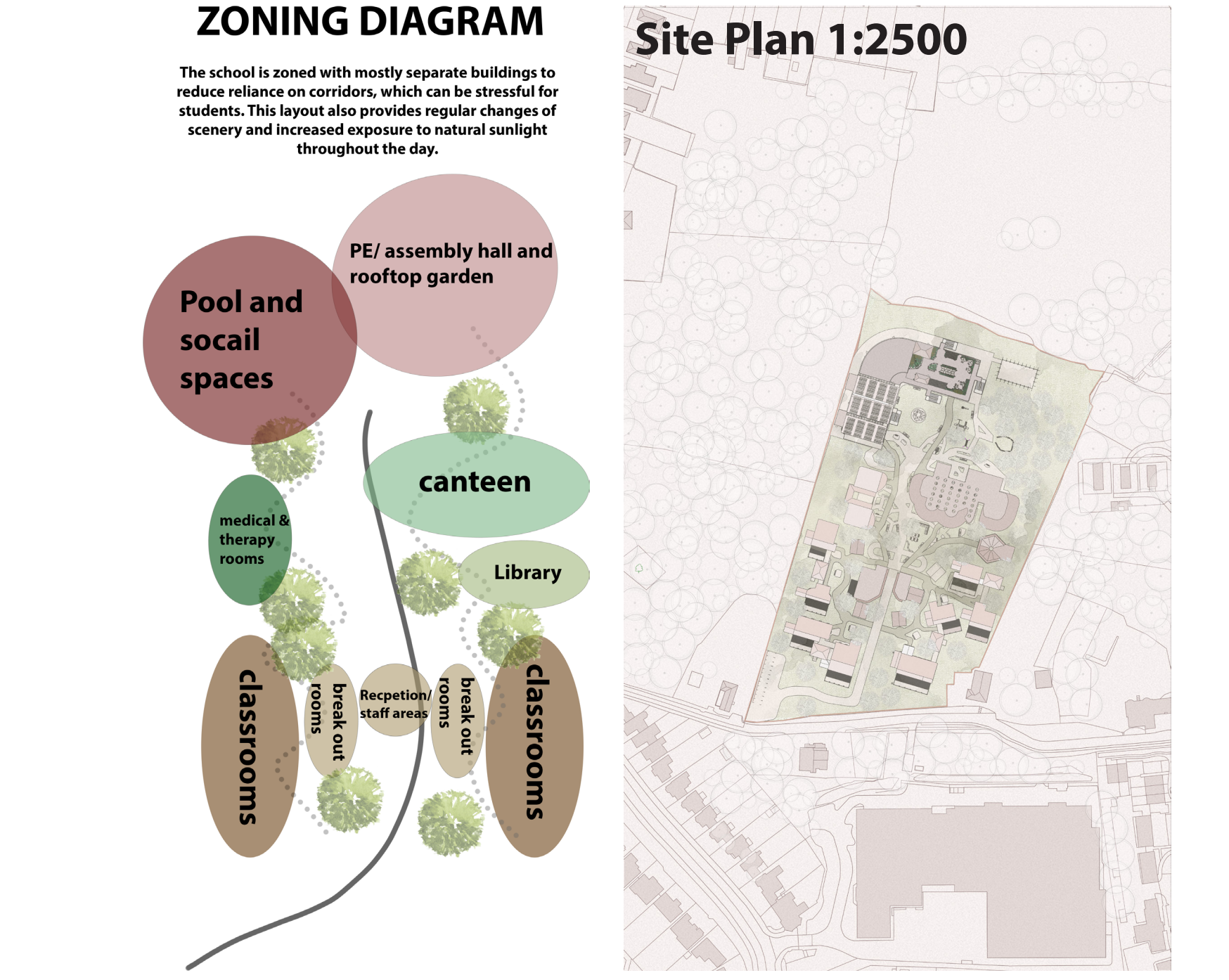
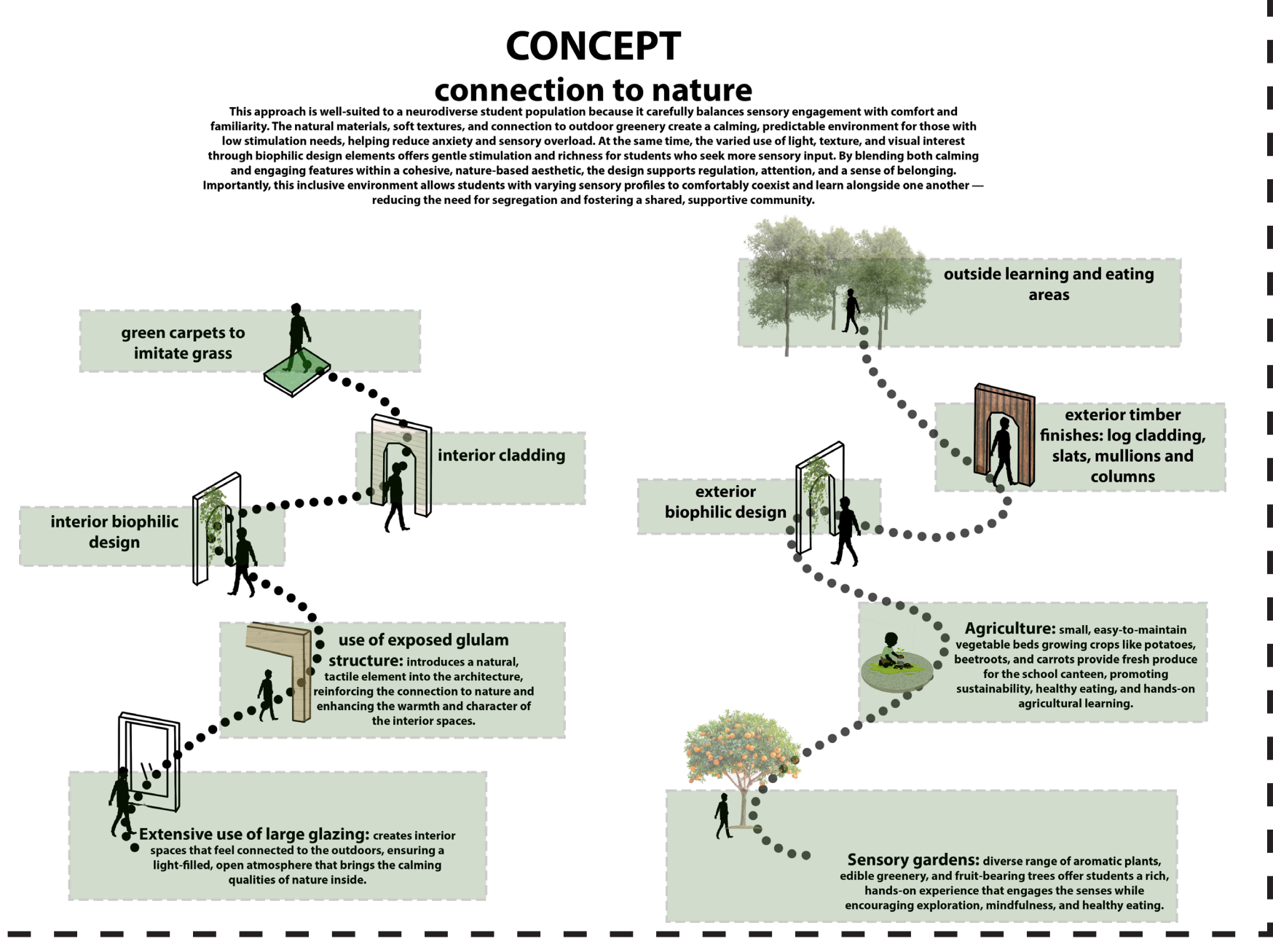
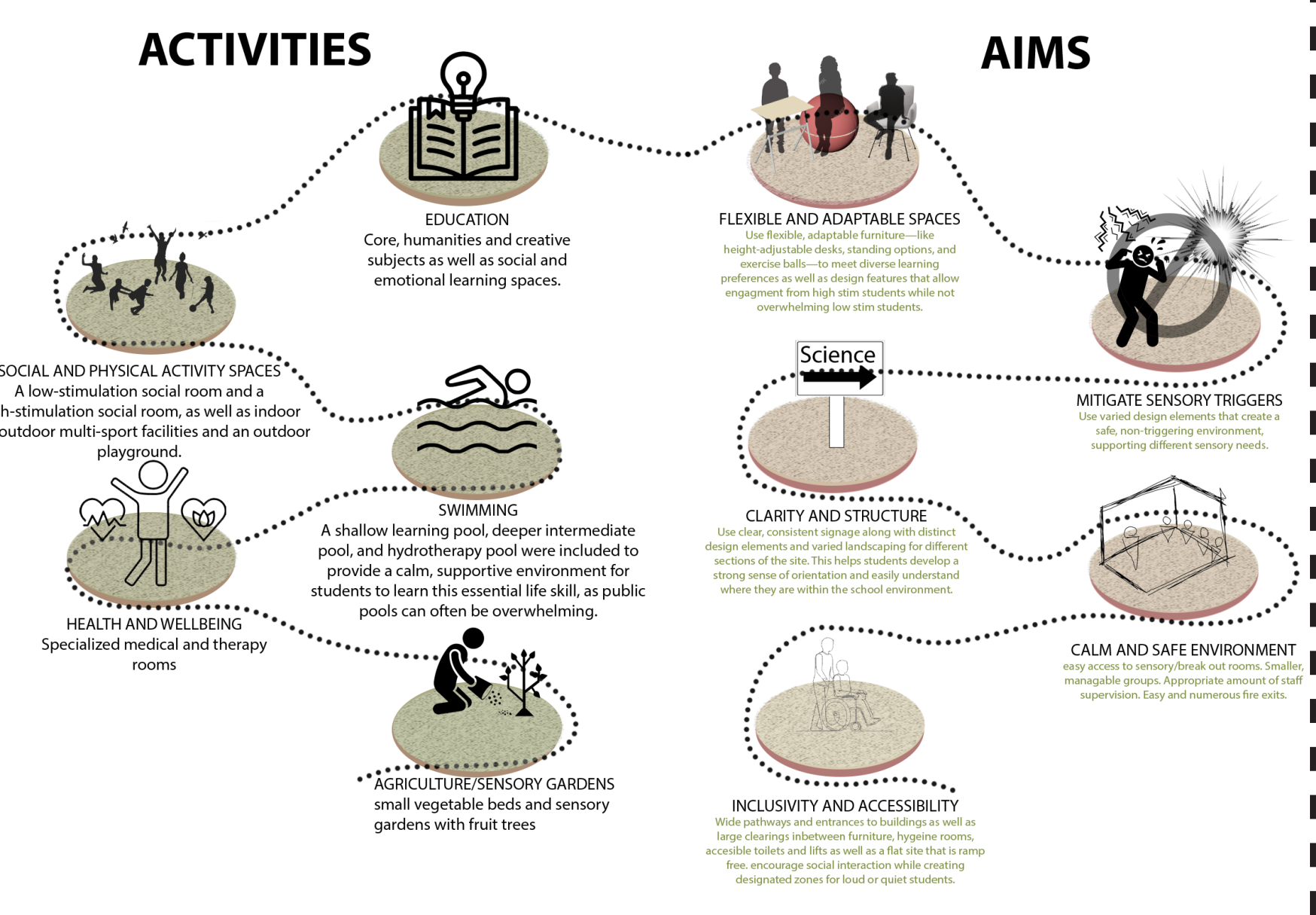
All building with this design comply or exceed part bb 104 recommended sizes.

Aspect	Sensory Triggering Environment	Sensory Calming Environment
Lighting	High contrast lighting, bright light, flickering lights, high frequency lighting, high frequency lighting, high frequency lighting	Low contrast lighting, soft light, natural light, natural light, natural light
Sound	High volume sound, high volume sound, high volume sound	Low volume sound, low volume sound, low volume sound
Colour & Contrast	High contrast colours, high contrast colours, high contrast colours	Low contrast colours, low contrast colours, low contrast colours
Spatial Layout	Cluttered spaces, cluttered spaces, cluttered spaces	Open spaces, open spaces, open spaces
Land	Steep slopes, steep slopes, steep slopes	Flat areas, flat areas, flat areas
Social Spaces	Overcrowded spaces, overcrowded spaces, overcrowded spaces	Open spaces, open spaces, open spaces
Movement & Activity	Fast moving, fast moving, fast moving	Slow moving, slow moving, slow moving
Features & Textures	Highly textured, highly textured, highly textured	Smooth surfaces, smooth surfaces, smooth surfaces

Precedents for Exterior Design

Precedents
Maggie's Centres, Various Locations

Maggie's Centres
Natural and warm textures used in the design.



ARC 3003

comprehensive design project

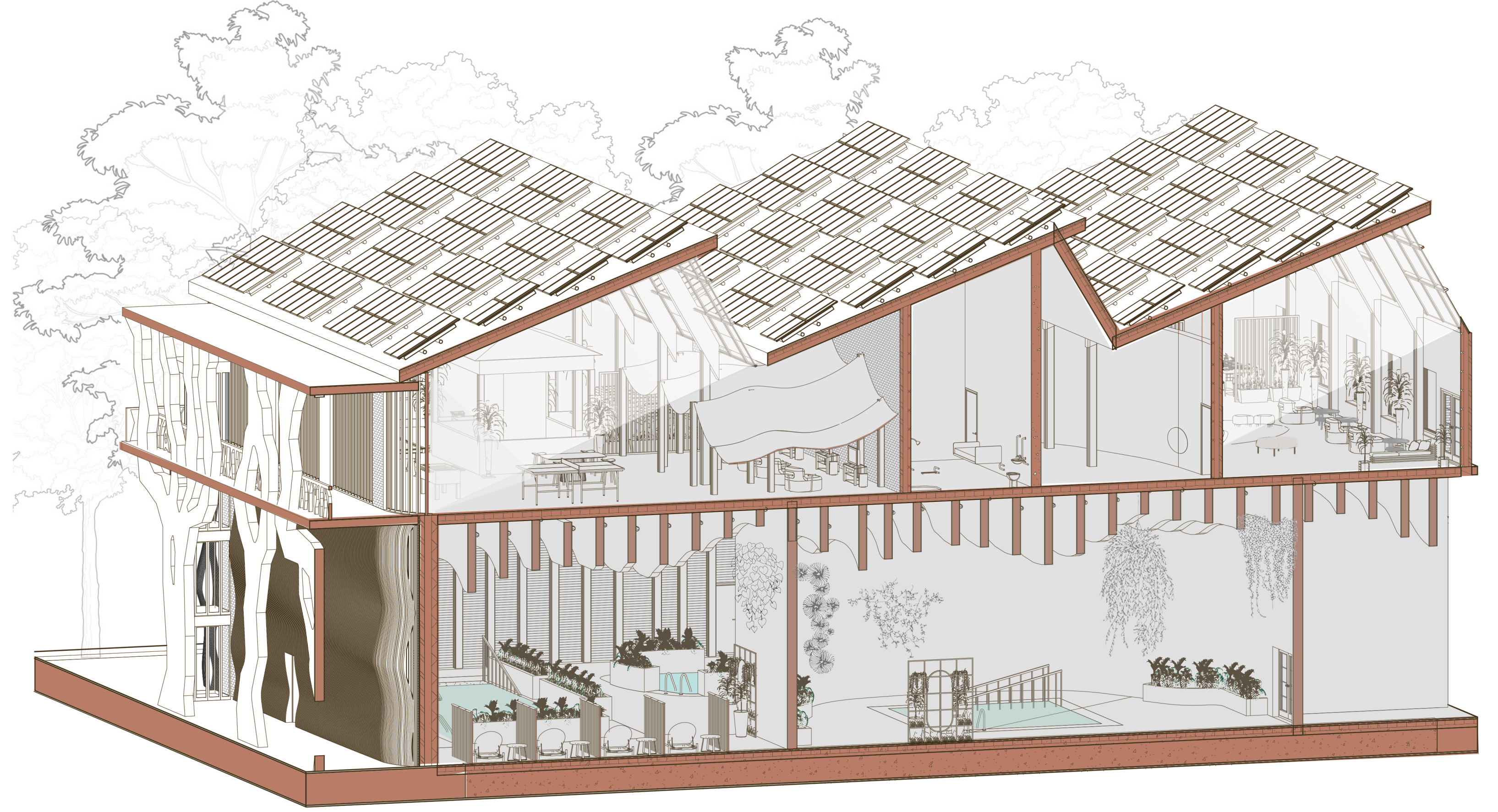
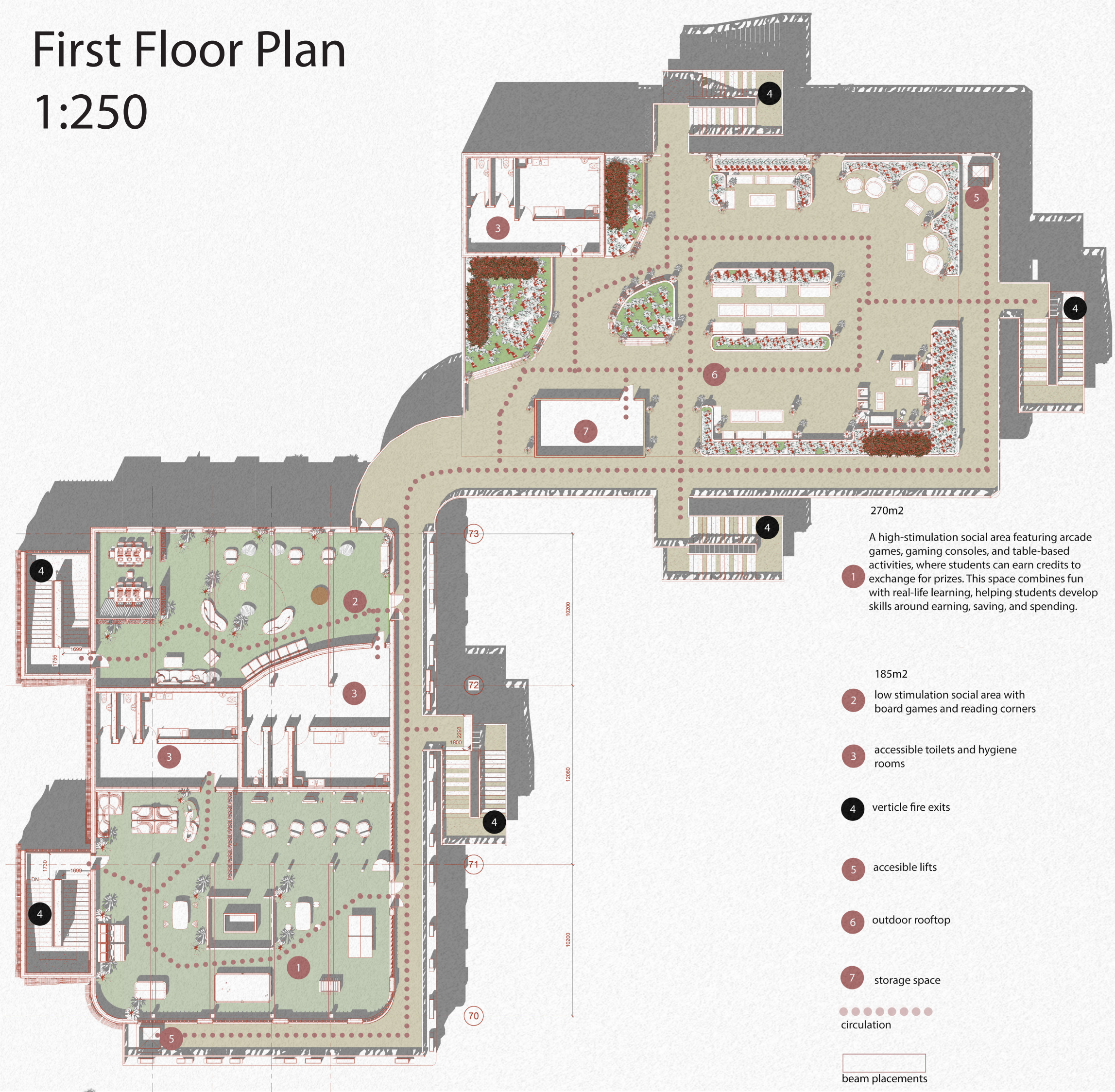
Alfie Drury
26488608

The Getaway

a school for primary neurodiverse students



First Floor Plan
1:250



1 Ground Floor
Plan 1:250

