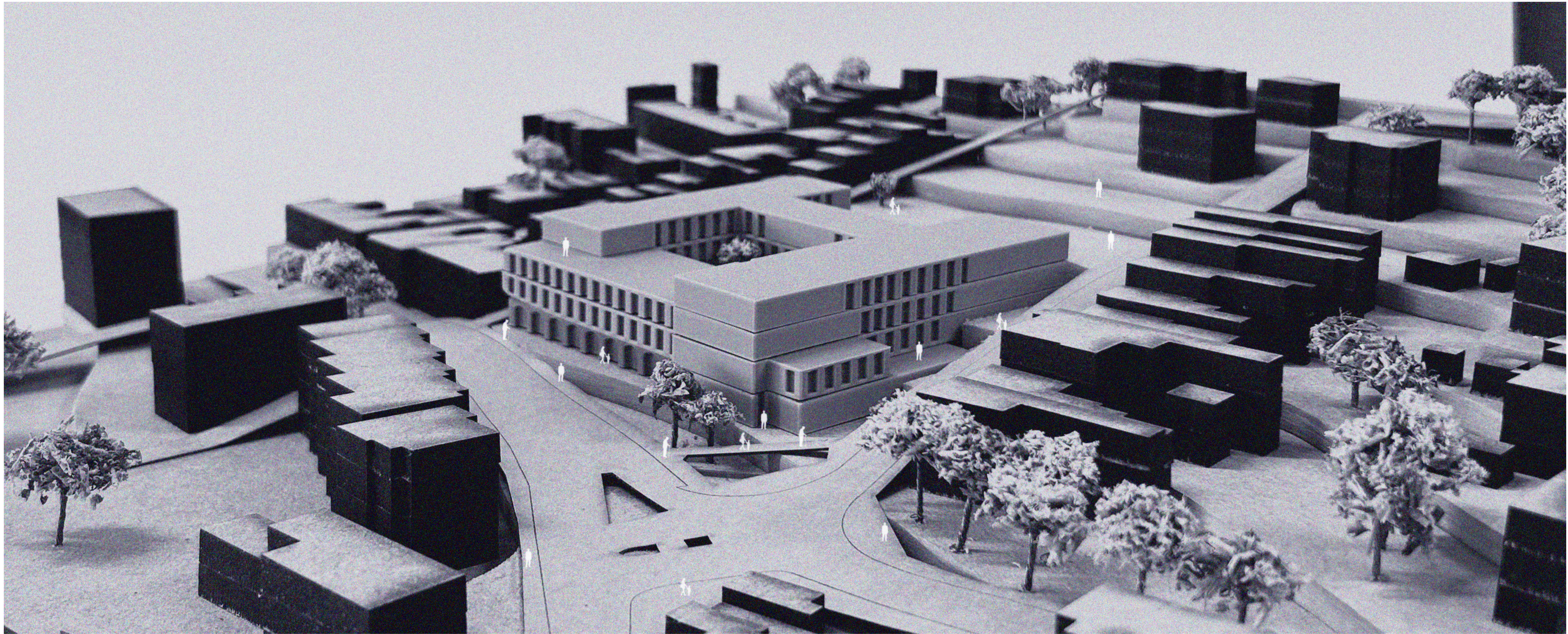
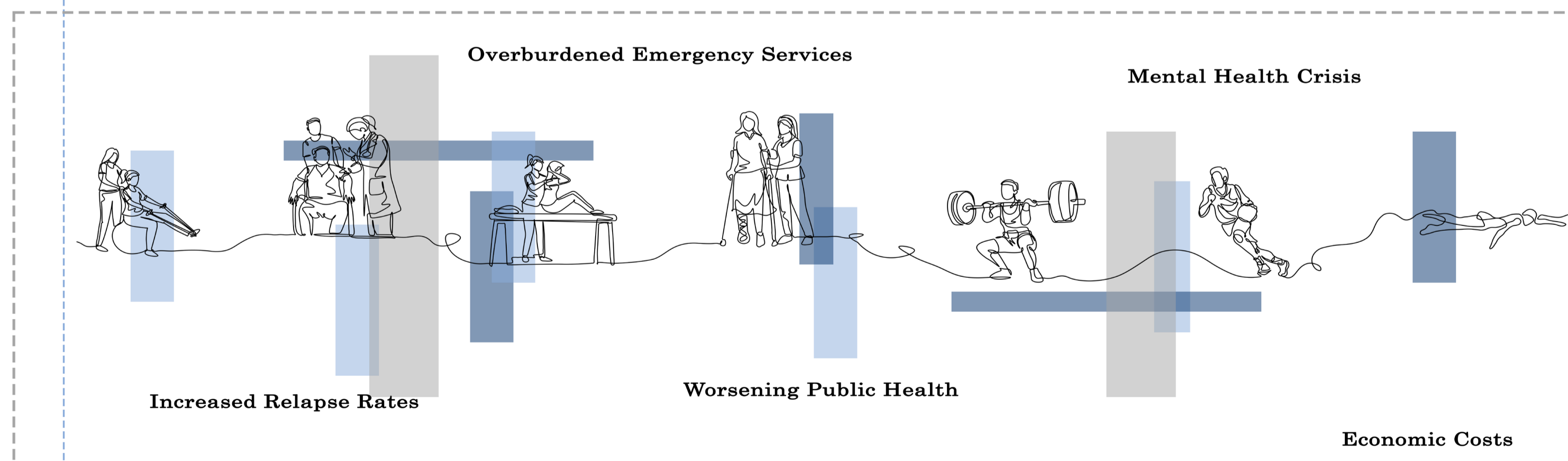
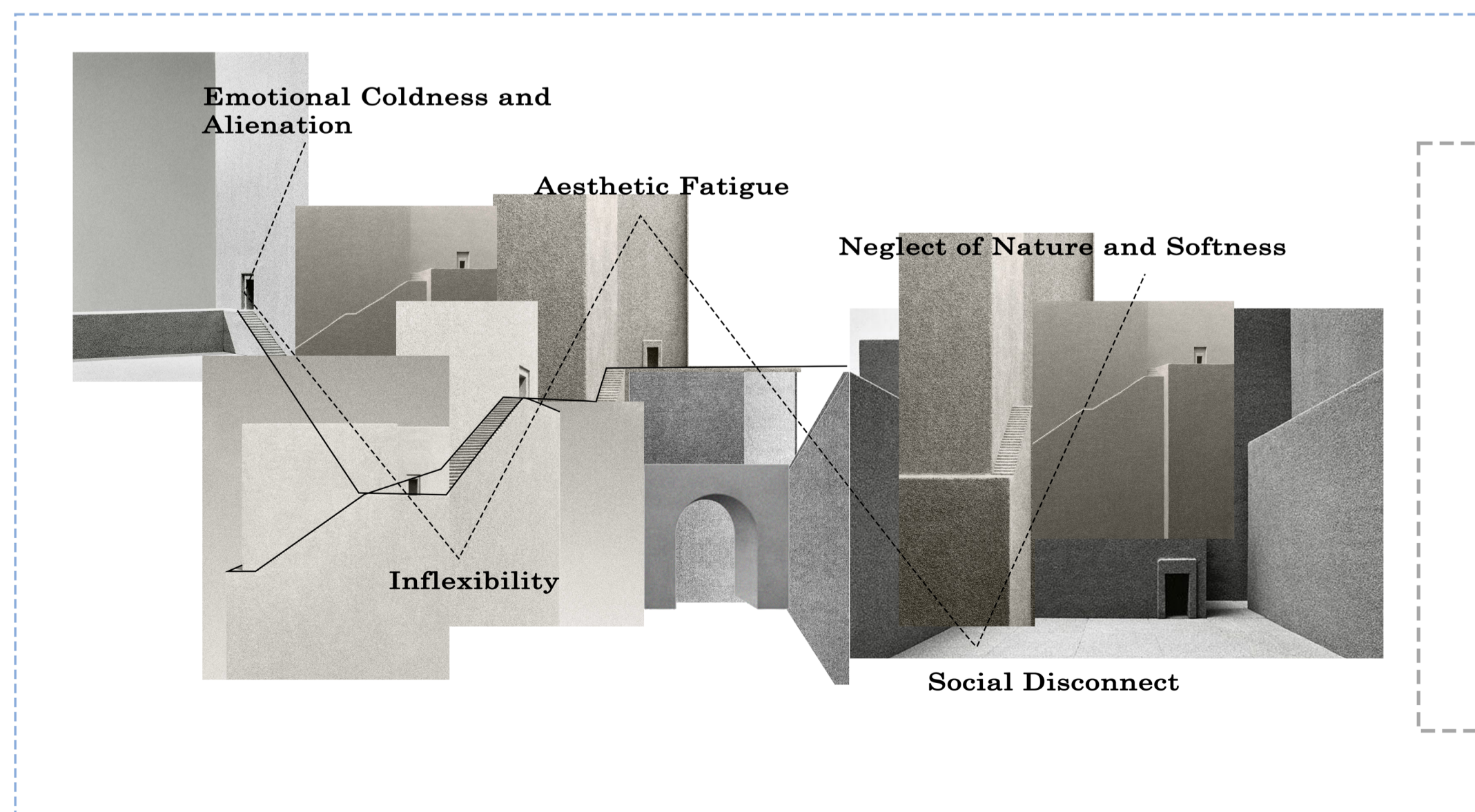


Health and Rehabilitation Centre, Lincoln

Sebastian Barrett
ARC 3003 -Comprehensive Design: Detailed Design



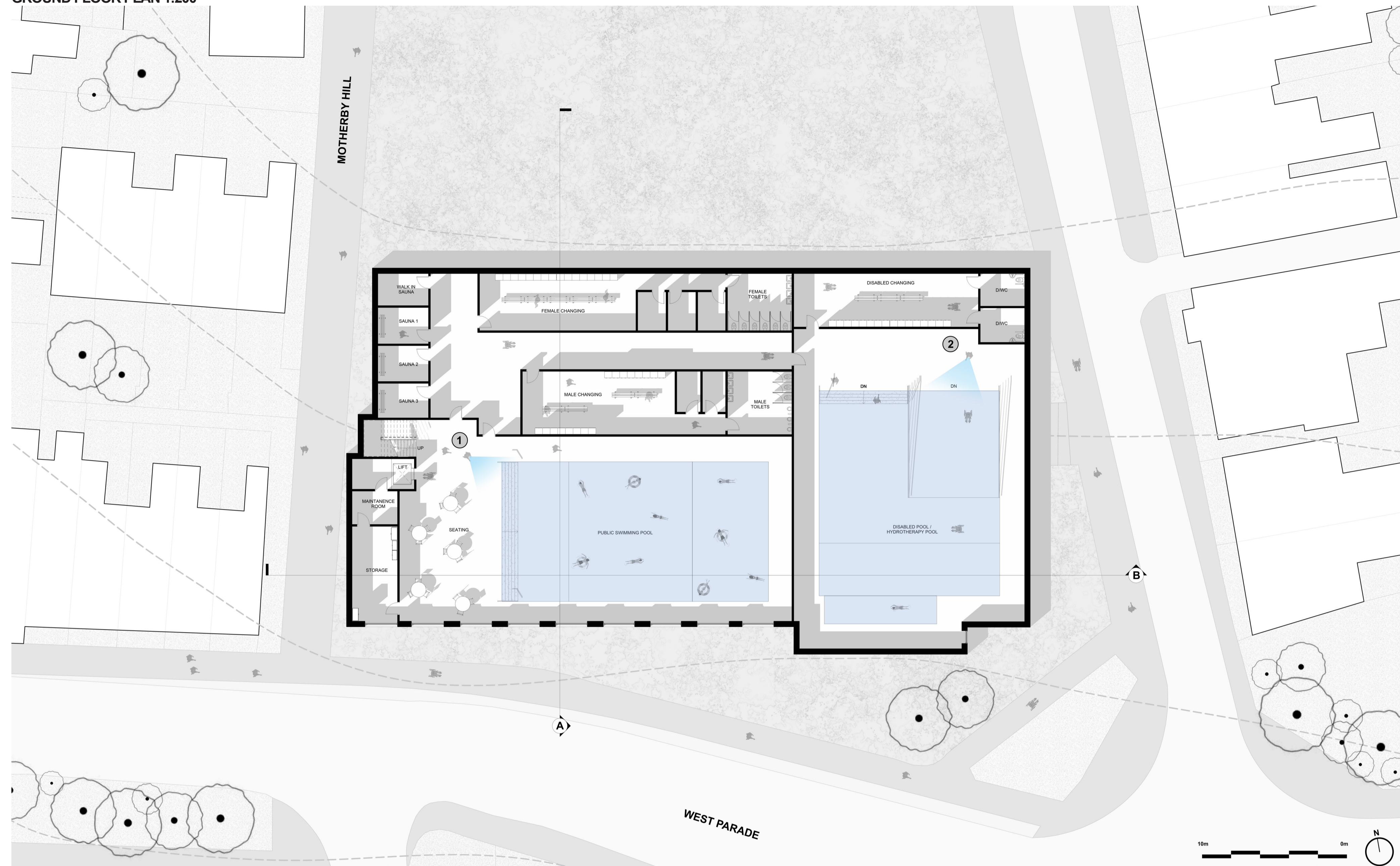
BRUTALISM AND HEALTHCARE COLLAGE



New healthcare centre aims to resolve the problems with current stress on healthcare systems by reducing the number of patients in hospital and instead to the this centre hub. This hub on West Parde acts as solution to those facing physical and mental needs while also revitalising the derelict Police station building acting as a bridge between old and new.

This is the basis of which the brief for this project was formed, to help those with physical struggles.

GROUND FLOOR PLAN 1:200



NORTH ELEVATION 1:200



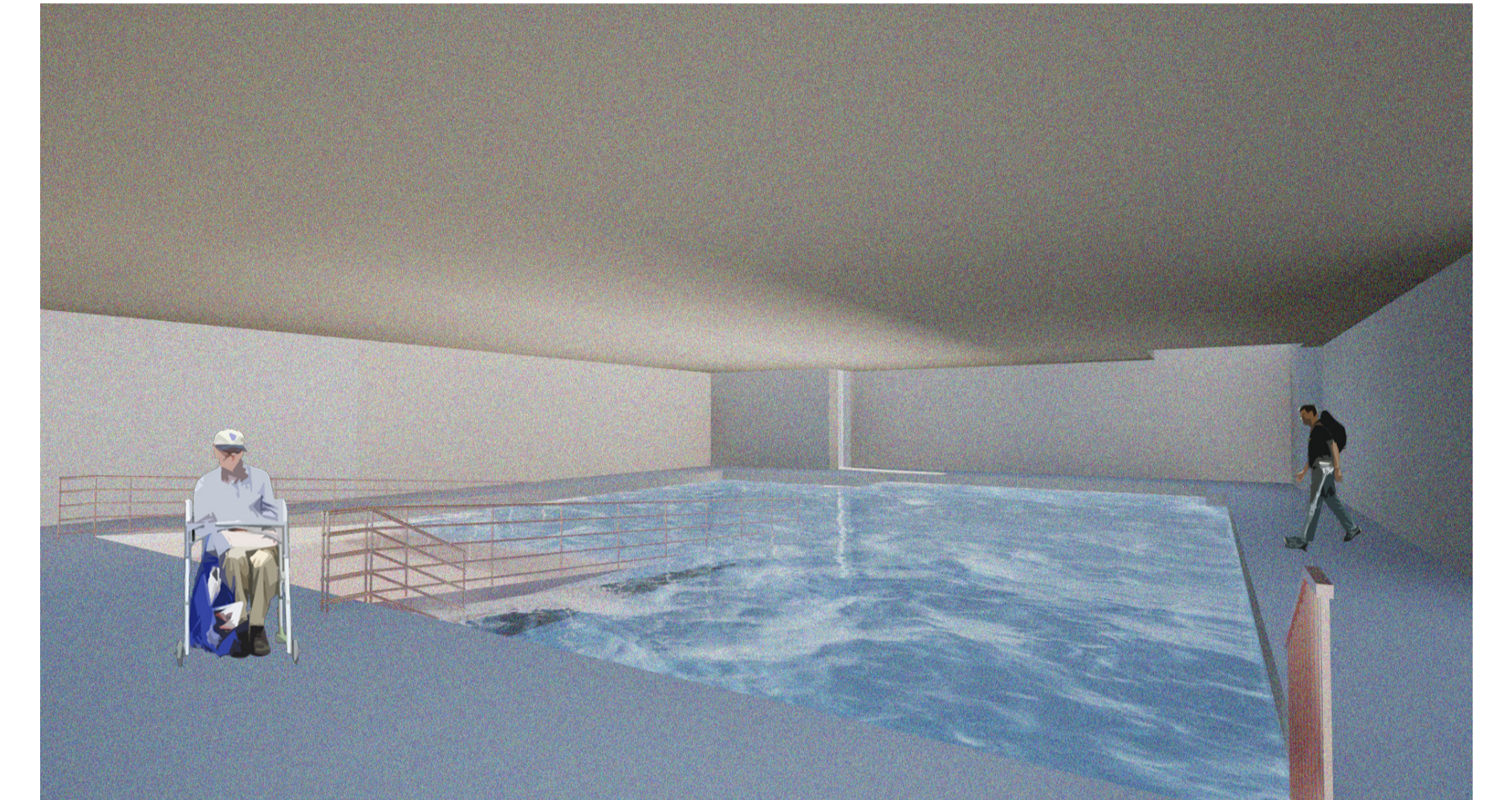
SOUTH ELEVATION 1:200



VISUAL 1 : PUBLIC POOL



VISUAL 2 : HYDROTHERAPY POOL



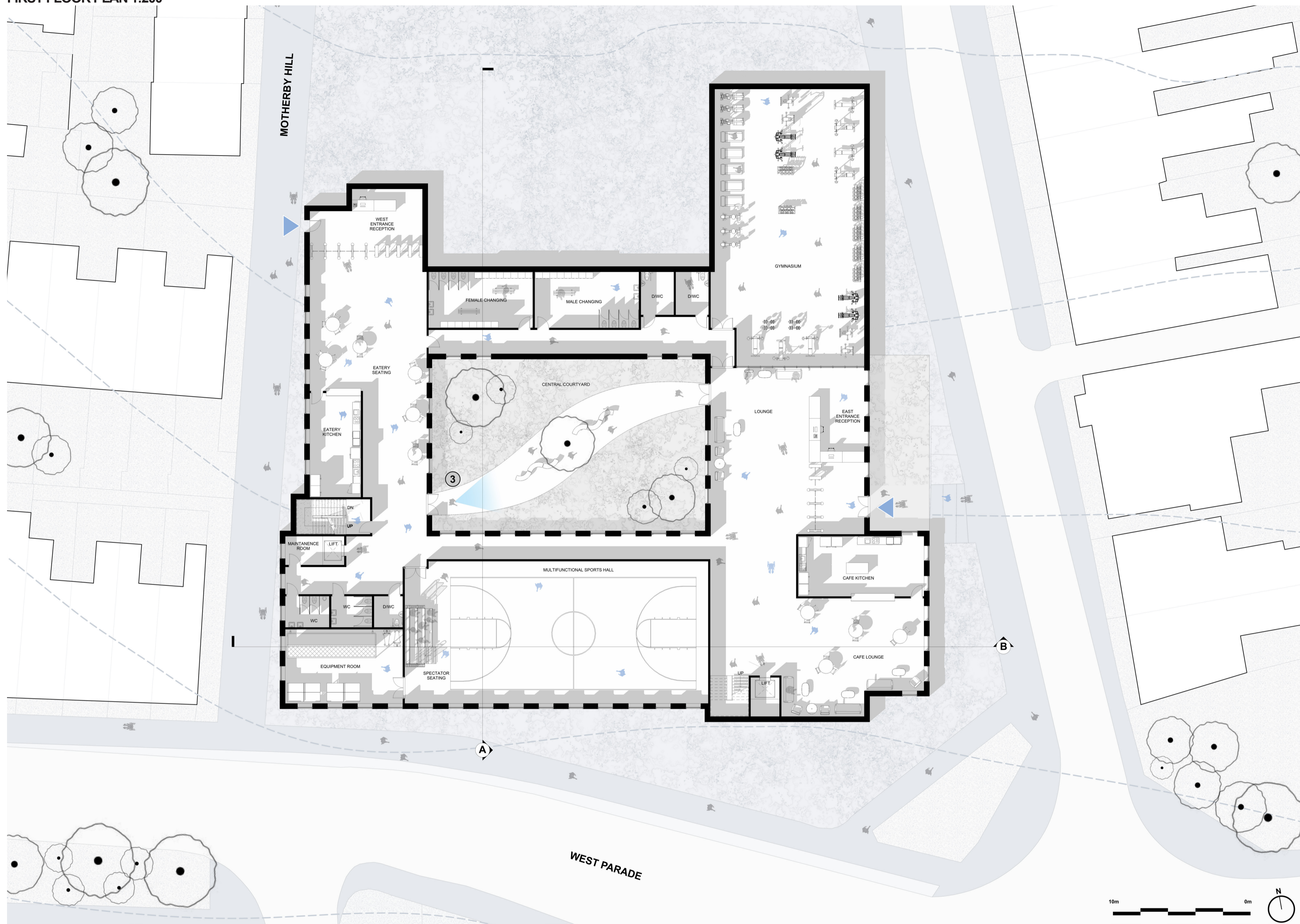
VISUAL 3 : COURTYARD



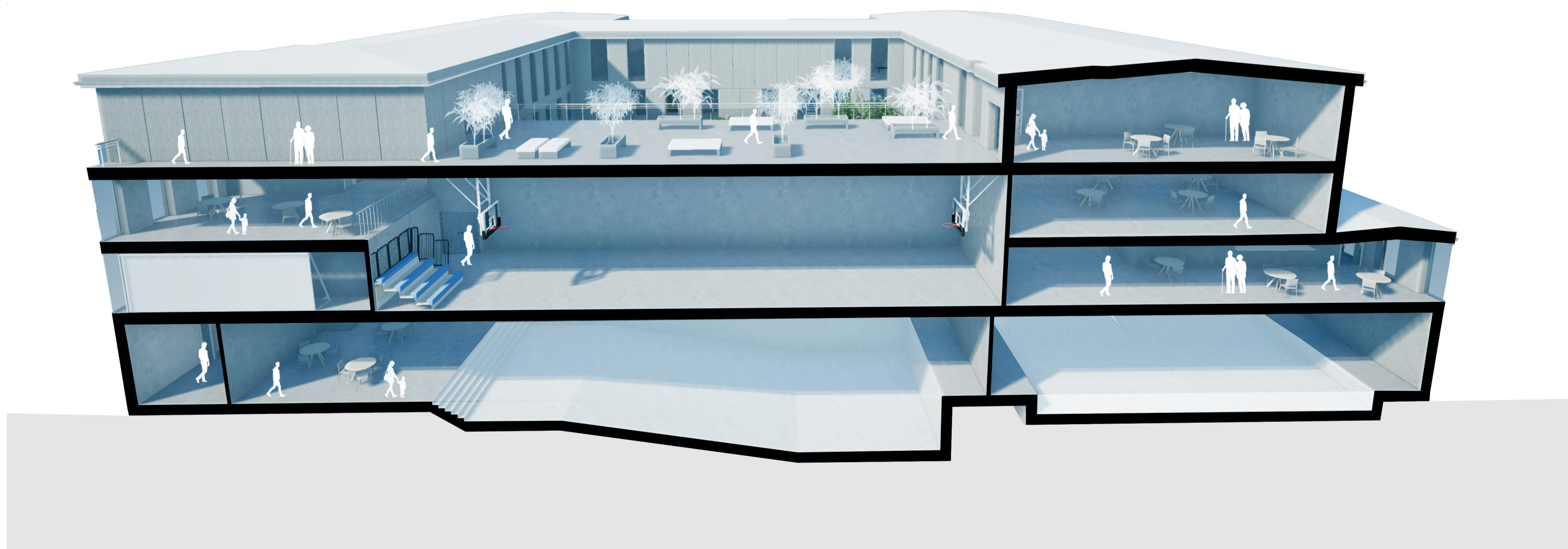
VISUAL 4 : SPORTS HALL



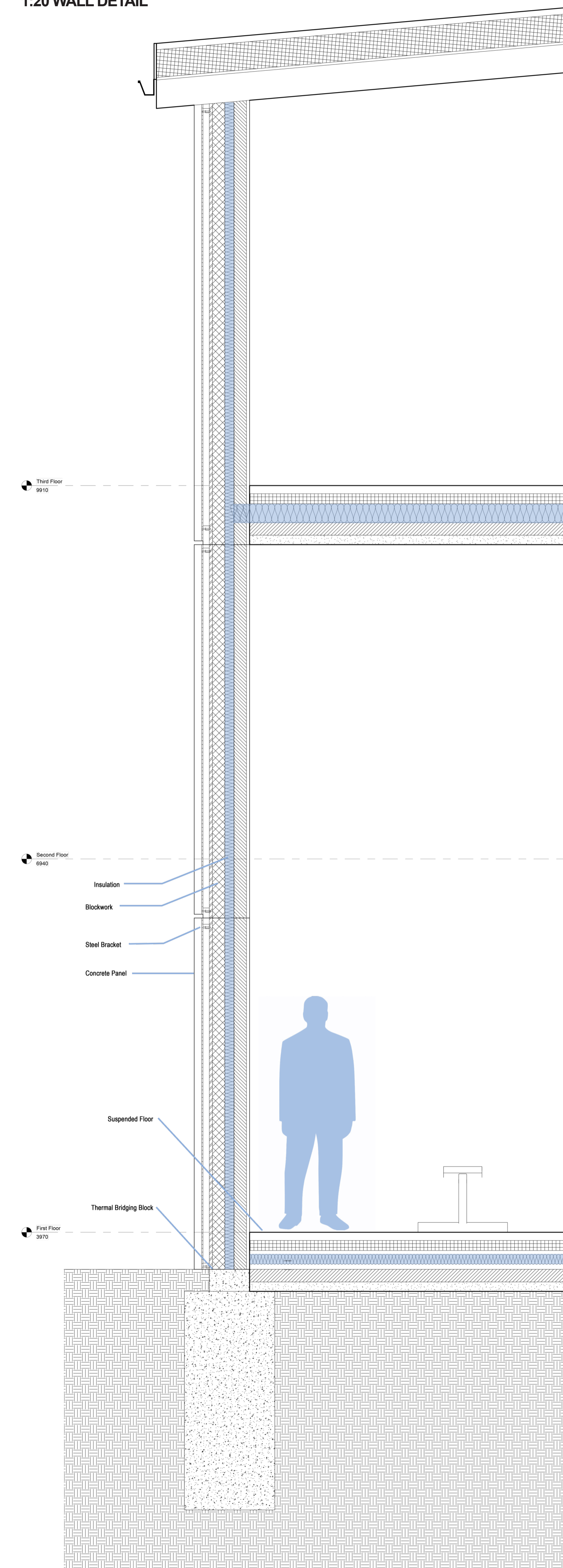
FIRST FLOOR PLAN 1:200



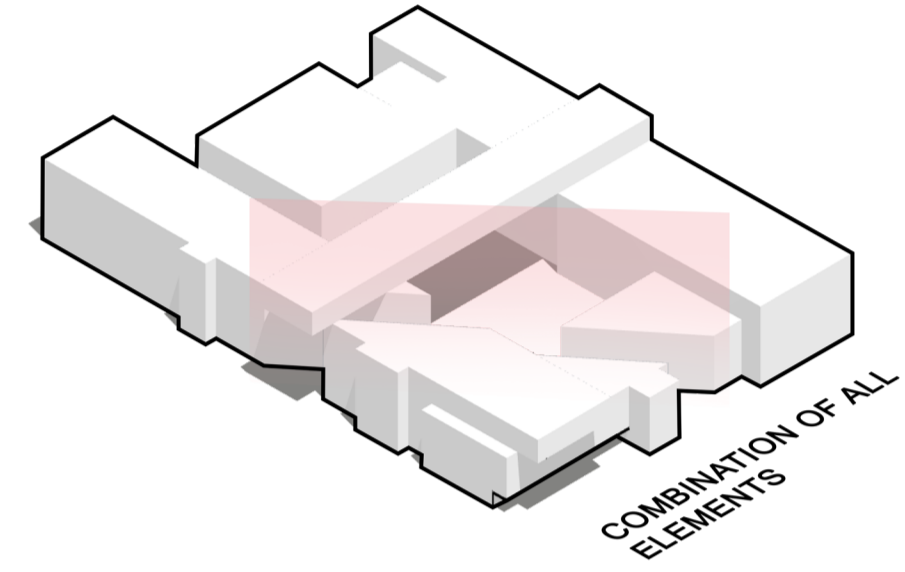
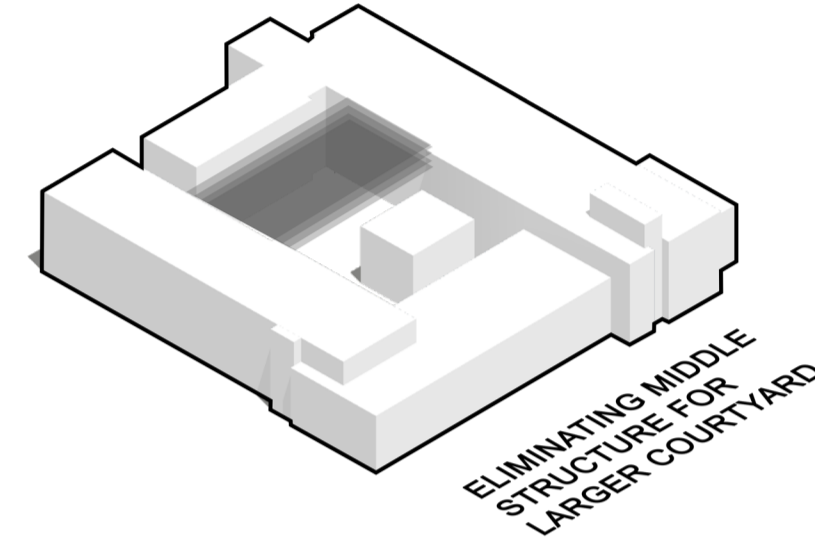
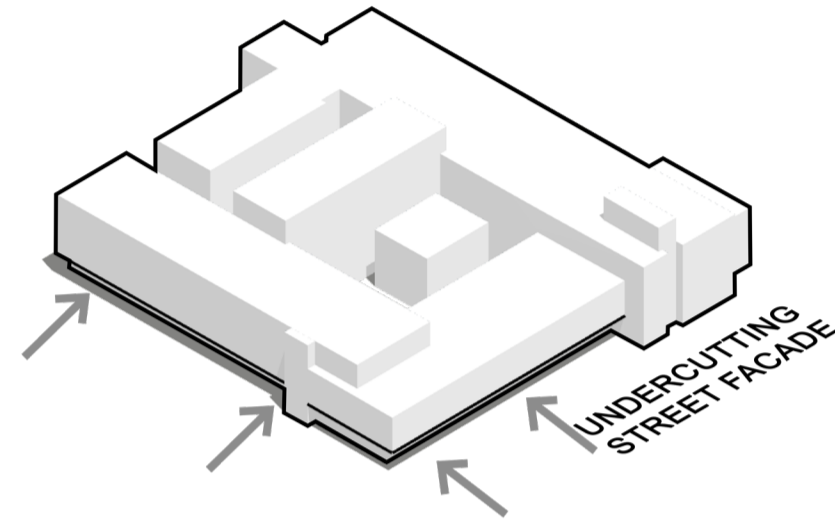
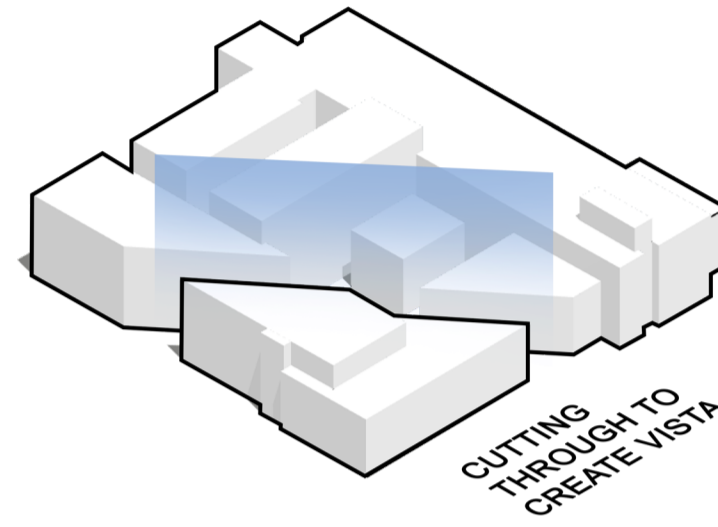
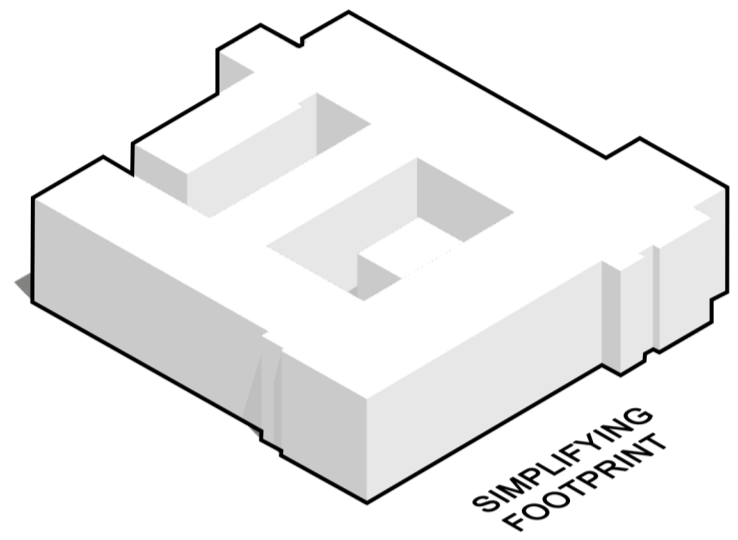
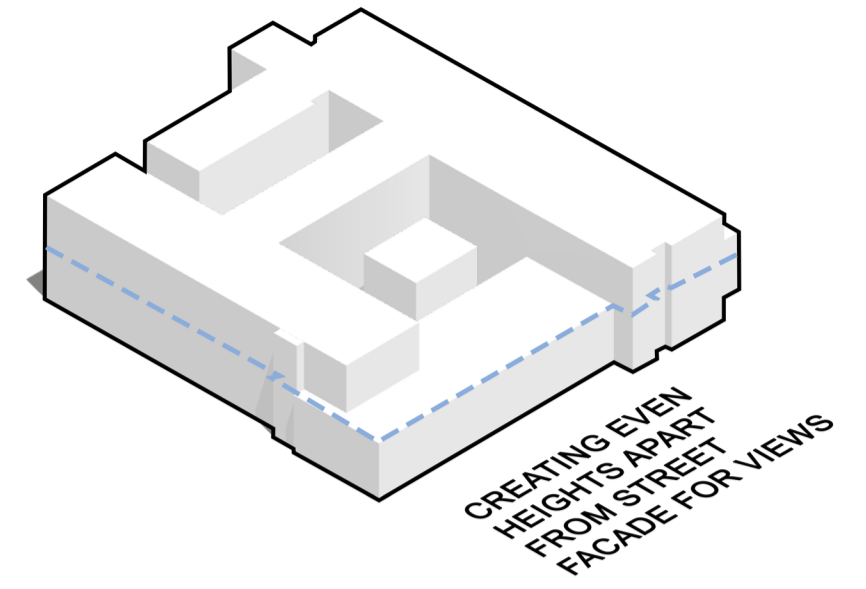
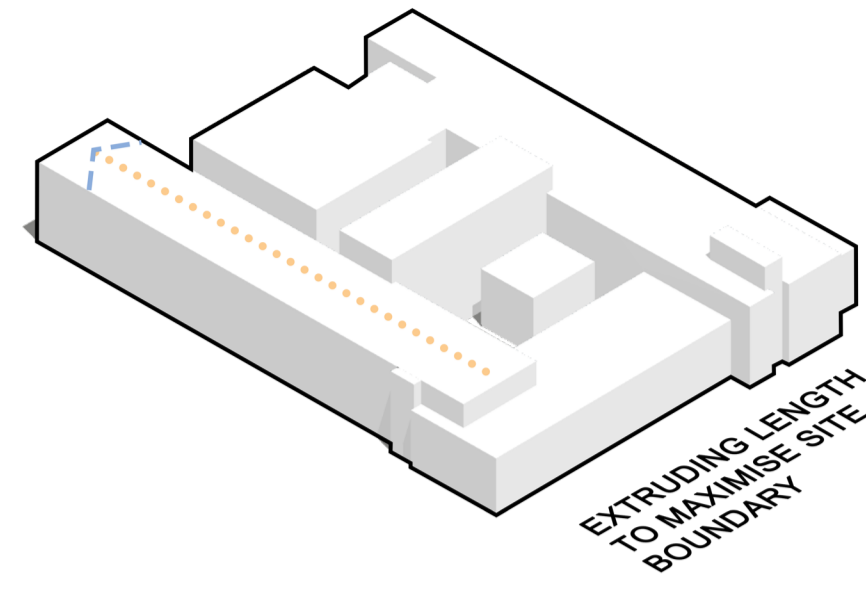
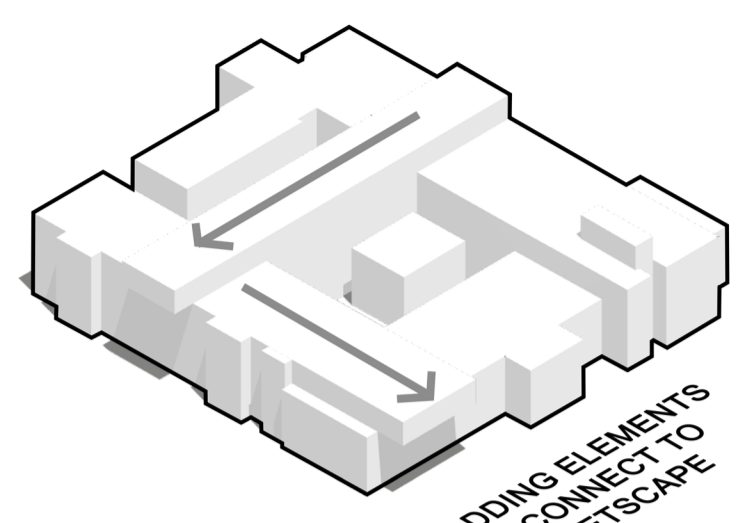
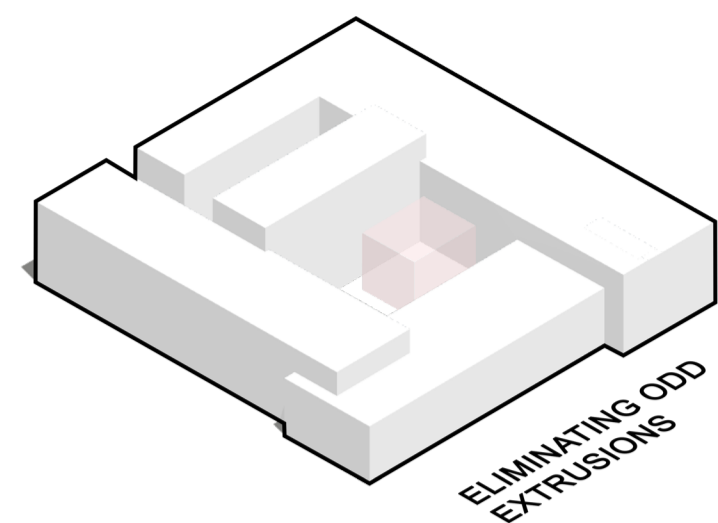
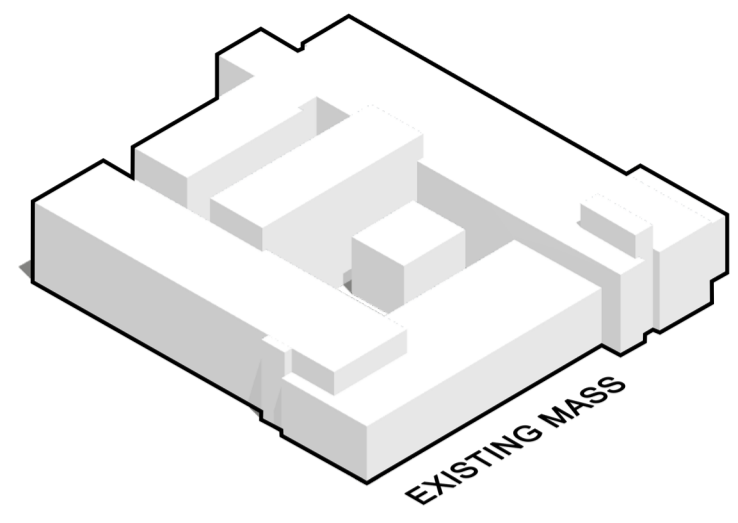
PERSPECTIVE SECTION B



1:20 WALL DETAIL



EXPERIMENTAL MASSING



SECTION A 1:100



SECOND FLOOR PLAN 1:200



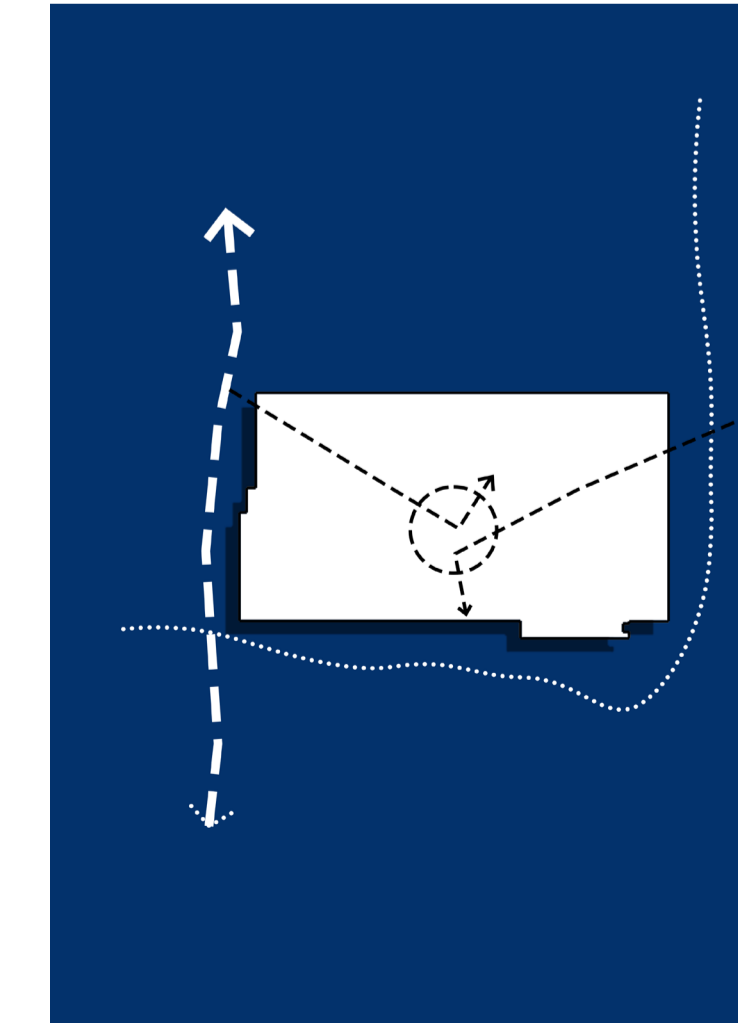
1:500 SITE PLAN



EAST ELEVATION 1:200



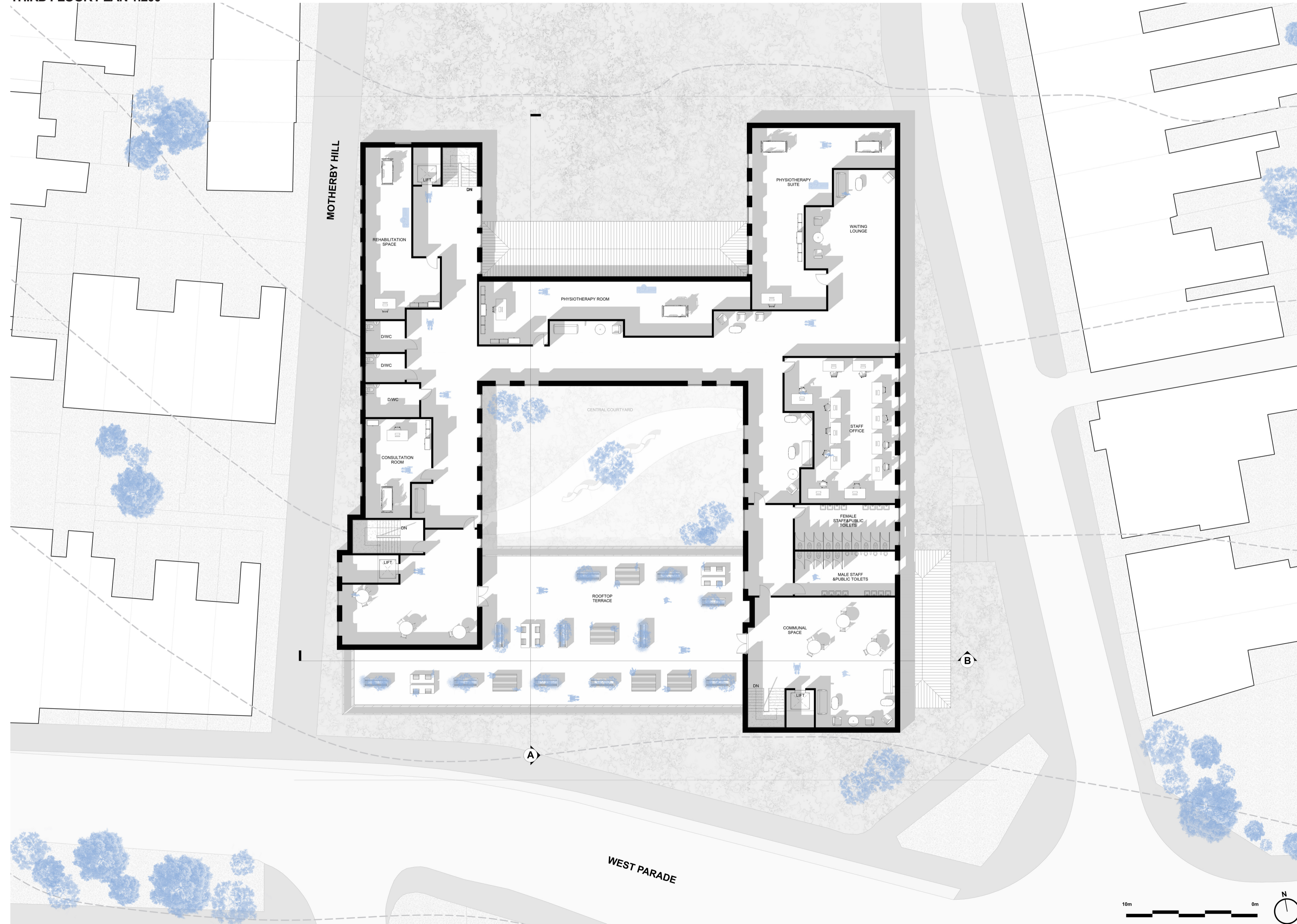
PARTI DIAGRAM



WEST ELEVATION 1:200



THIRD FLOOR PLAN 1:200



1:500 EXPLODED AXONOMETRIC

