

The Baldock Interchange

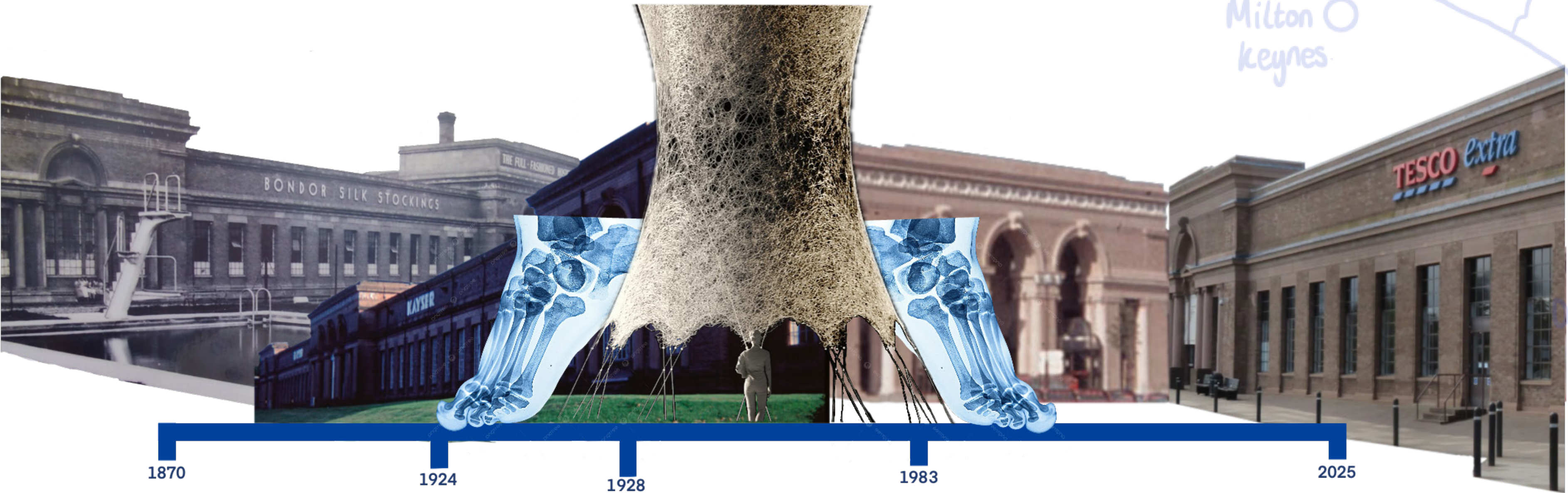
Design Vision:

The Shift in Work Culture
The rise of remote and hybrid work schedules reshaped how we approach our professional lives. Initially driven by necessity during the 2020 coronavirus pandemic, working from home became a long-term reality for many. While it offers flexibility, it also presents challenges—loneliness, distractions, and a lack of proper workspaces that promote efficiency.

Challenges of Commuting & Traditional Workspaces
For those who still commute, the UK's declining transport infrastructure adds another layer of difficulty. Unreliable transport links force workers to leave earlier, arrive late, or experience unnecessary stress, which can lead to workplace dissatisfaction and conflict. These factors raise an essential question: **Is there a better alternative?**

A New Work Ecosystem
This project is not merely a 'business hub'; it is a **community-driven, future-ready ecosystem** that reimagines how and where we work. By prioritizing **ergonomic design, diverse workspaces**, and a balance between **individuality and collaboration**, it establishes a new benchmark for post-lockdown work environments—without losing sight of the structure and social dynamics of the pre-pandemic workplace.

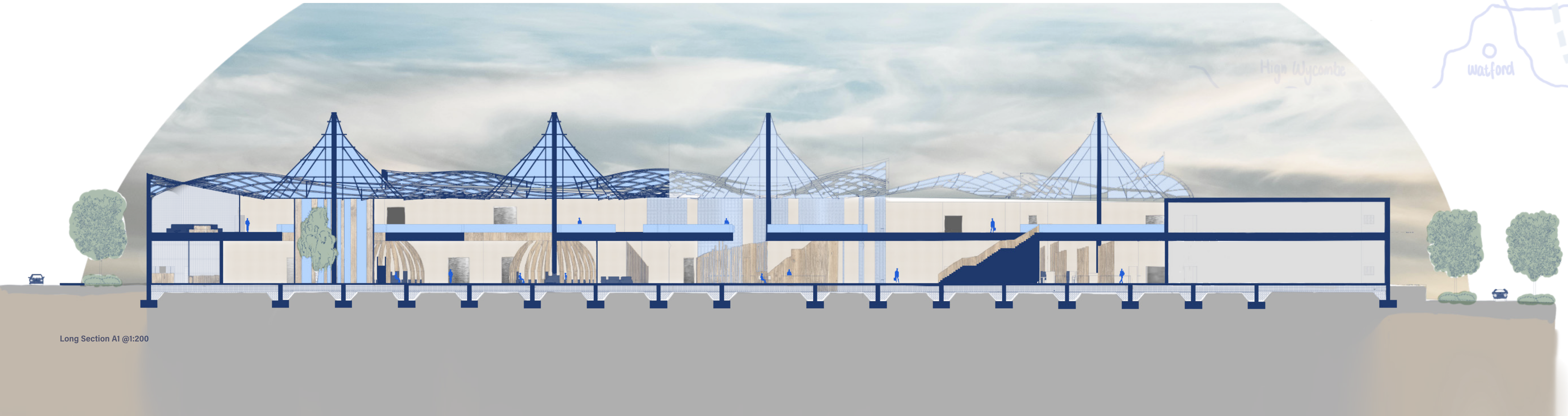
The space offers an alternative to working in isolation at home, fostering **productivity, connection, and well-being**. This is more than just a place to work; it's a vision for the future of work.



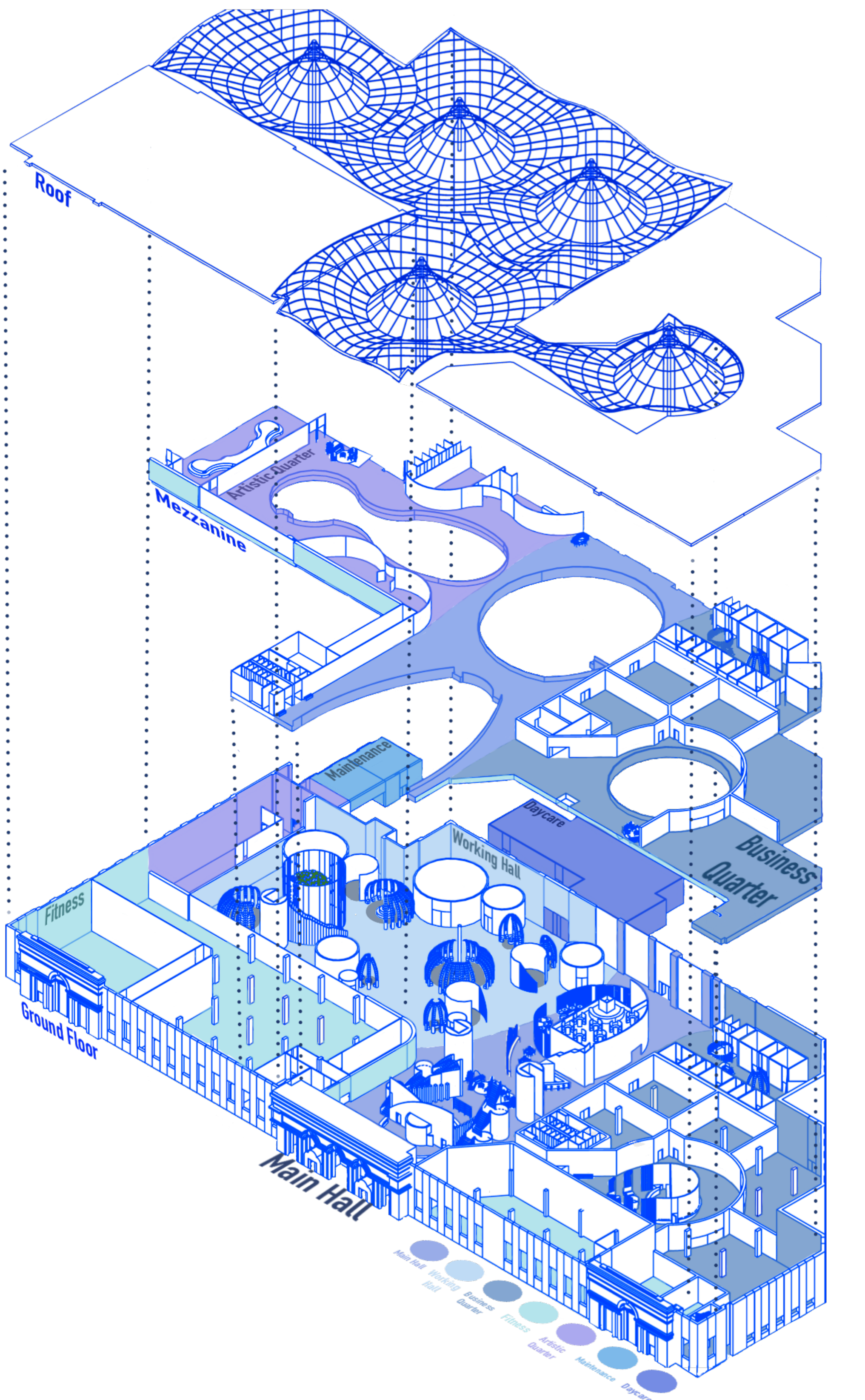
Timeline of Building History



Site Plan with Building Context



Long Section A1 @1:200



Rendered Axonometric of "The Baldock Interchange" (not to scale).



Open + Enclosed -

With 20% of remote workers facing collaboration and communication challenges, this design offers a balanced mix of private and open spaces to support diverse workstyles. A modular layout with varied spatial typologies provides choice, control, and adaptability - promoting inclusivity, functionality, and evolving with users needs.

Braiding Social + Business -

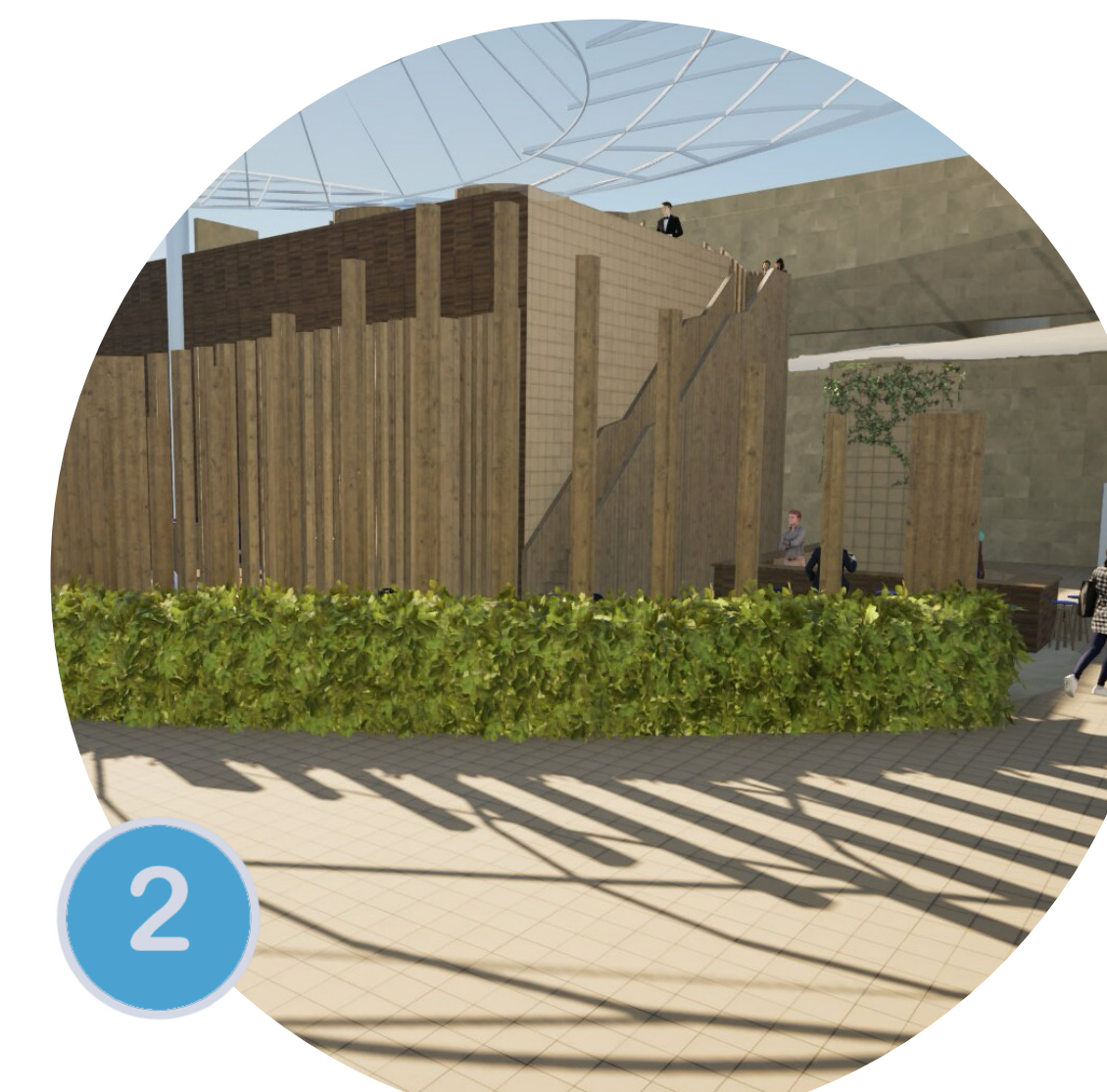
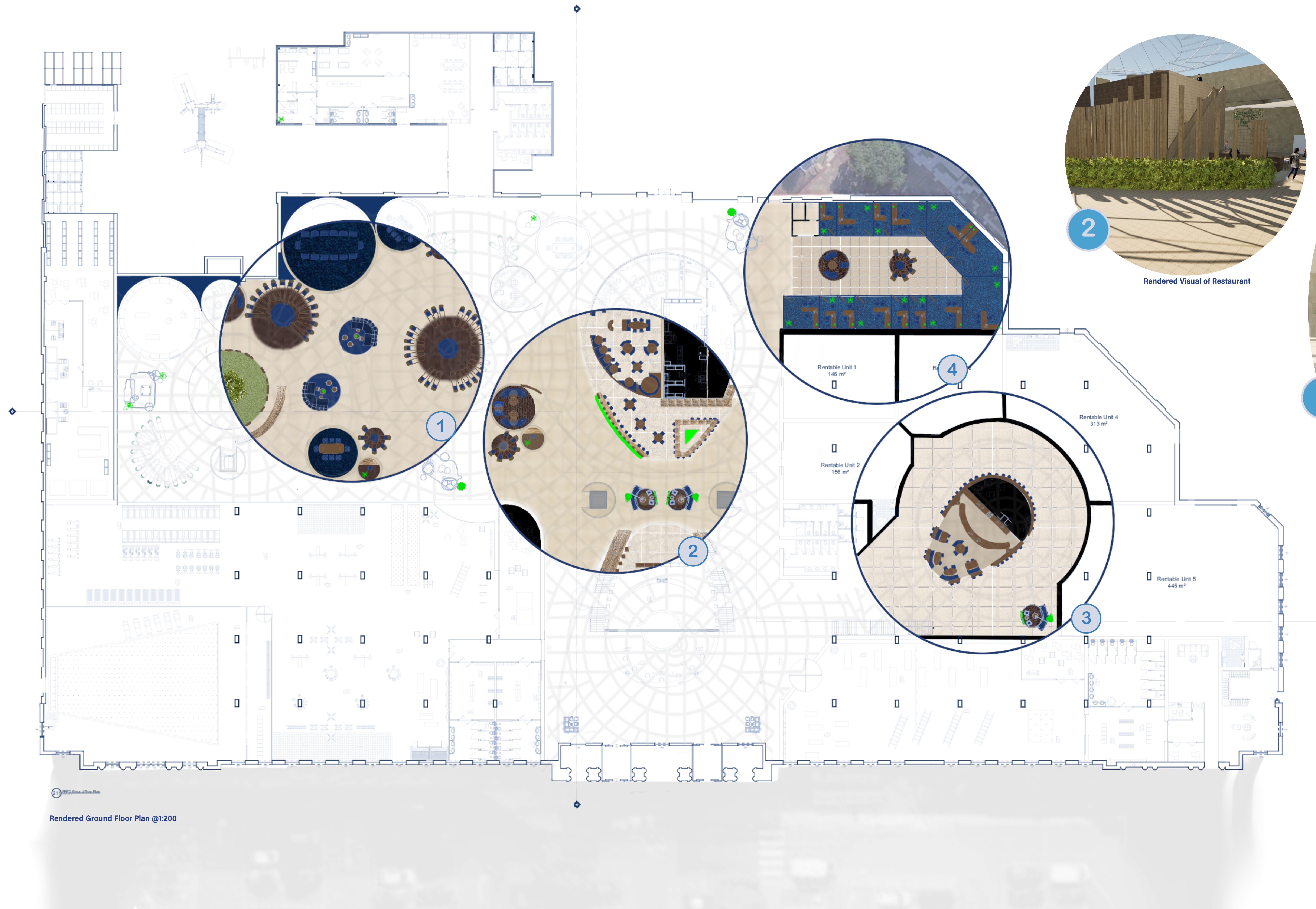
With 12% of remote workers facing distractions and 7% struggling to stay motivated, this design integrates social and work spaces to foster focus, motivation, and community. Guided by biophilic principles, the environment supports well-being, encouraging natural interaction and a healthier, more engaging work-life balance.

Fixed to Fluid -

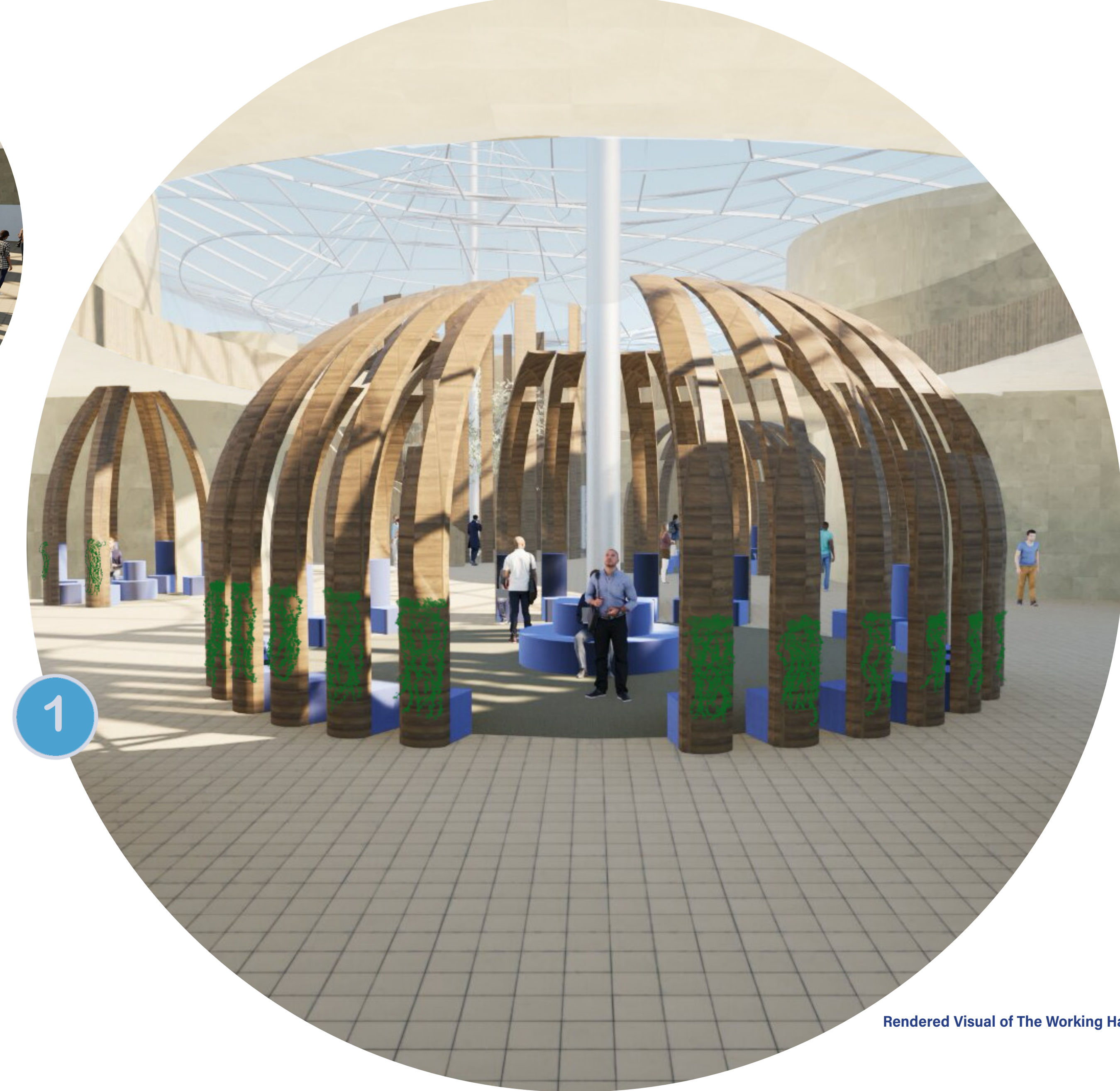
With 10% of remote workers struggling to communicate across time zones and 18% unable to unplug, this design offers adaptable, ergonomic workspaces that promote balance and connection. Flexible layouts, movable furniture, and multimodal settings support diverse work styles, allowing users to shift easily between tasks and needs throughout the day.

ME +WE -

With 20% of remote workers experiencing loneliness, this design brings the vibrant, collaborative spirit of London and Cambridge to Baldock. Blending formal and informal shared spaces, it support both focused work and teamwork, encouraging connection and seamless transitions between tasks.



Rendered Visual of Restaurant



Rendered Visual of The Working Hall



Rendered Visual of The Business Quarter, Coffee Bar



Rendered Visual of The Private Offices

