



Safety and Stabilisation



Remembrance and Mourning



Reconnection and Integration



Growth and Renewal

## Project Brief:

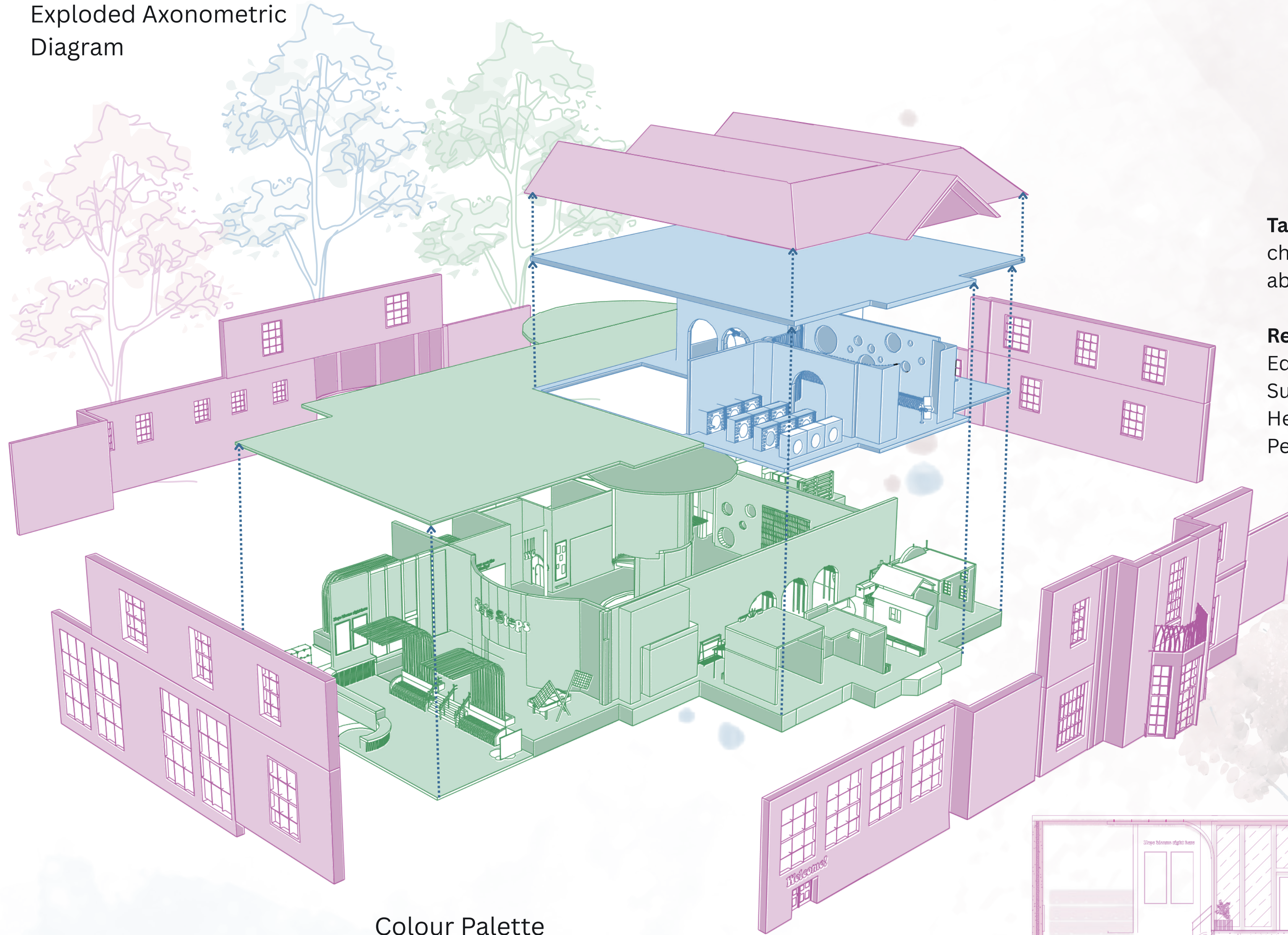
PROJECT NAME: SAFE STEPS COMMUNITY CENTRE

SITE LOCATION: CHESTER, UNITED KINGDOM.

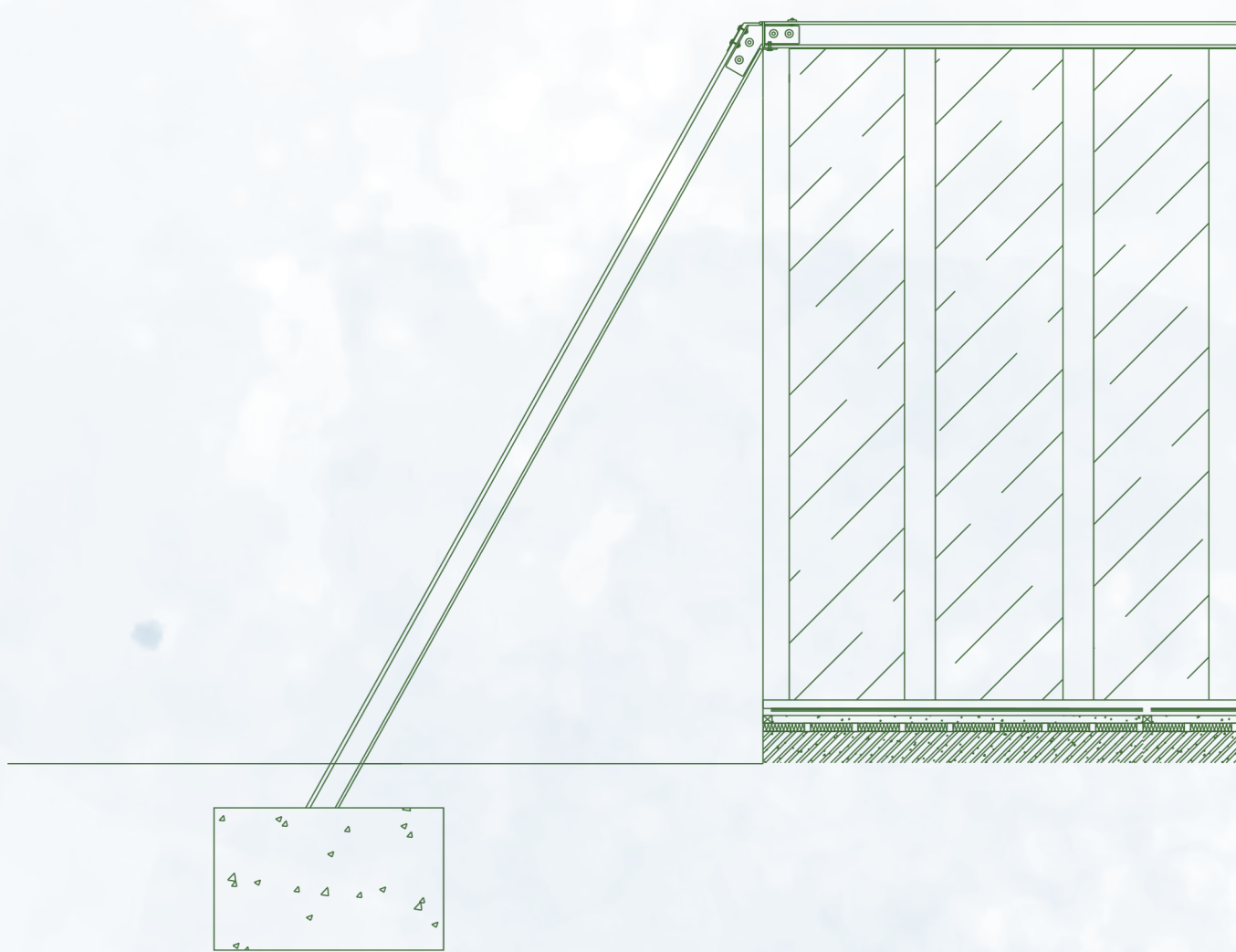
CLIENT: CHILDREN AGED 6 TO 10.

DESIGNED AS A SAFE HAVEN FOR CHILDREN RECOVERING FROM ABUSE, SAFE STEPS USES ESCAPISM TO SUPPORT HEALING. THE JOURNEY STARTS ON "EARTH" A STEADY NATURE-INSPIRED GROUND FLOOR, AND PROGRESSES TO "SPACE," WHERE IMAGINATION AND DISCOVERY SOAR ON THE FIRST FLOOR. THROUGH PLAY, HEALING, AND LEARNING, THE FACILITY HELPS CHILDREN FEEL SECURE, SEEN, AND FREE TO GROW.

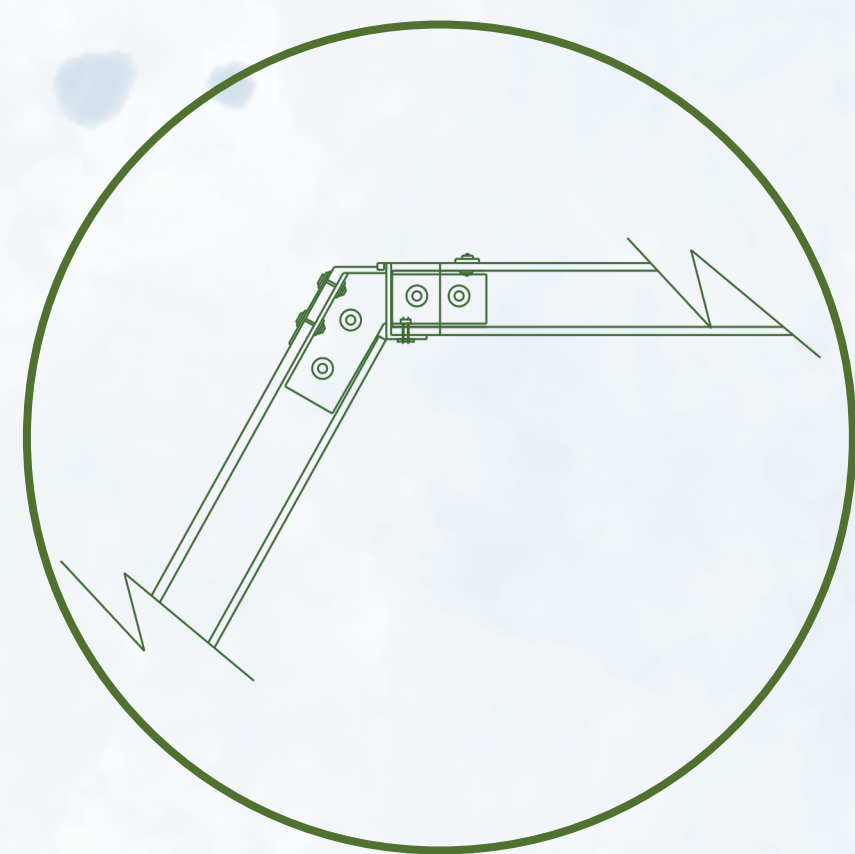
Exploded Axonometric Diagram



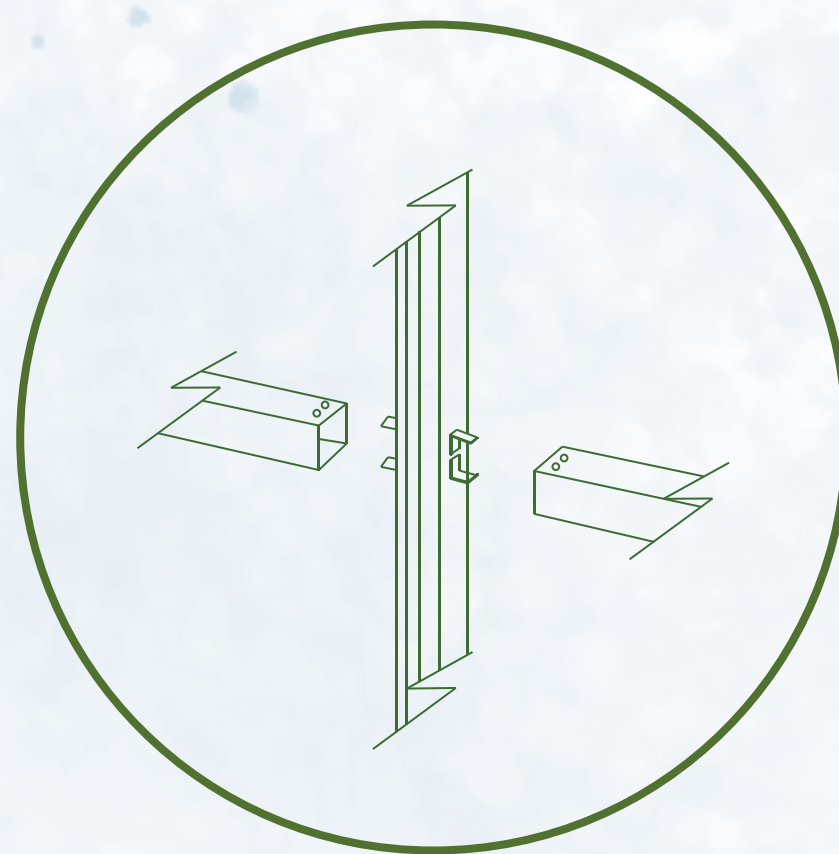
Colour Palette



A glass extension maximises natural light, creating a bright, welcoming space that feels open and connected to the outdoors. Natural lighting is proven to boost mood, reduce stress, and enhance well-being especially important for children in healing environments. A moment connection between the steel column and steel framing is ideal for providing stability and strength.



Moment connection detail 1:20



Steel frame connection detail 1:20

The ground floor is designed to be grounding, representing adventure and the Earth. Biophilic elements, natural textures, and playful structures create an immersive environment where children can explore, connect with nature, and feel a sense of stability and growth.

## Material Board



The ground floor materials create a warm and inviting atmosphere by combining natural oak paneling and timber with durable terrazzo in the foyer and cafeteria. Soft EVA foam and rustic woods provide comfort and texture in the play areas, while chalk fiber butter tiles provide a clean, fun touch to bathrooms and workplaces. Powder-coated steel provides a sleek, modern touch that connects the vivid spaces.

- List of Materials:**
- Chalk fibre butter tiles (bathrooms, cafeteria and office)
  - EVA foam (main play area, play room)
  - Timber (reception, office, bathrooms, main play area, cafeteria)
  - Rustic walnut wood (play room)
  - Rustic hickory wood (play room)
  - Powder coated steel (main play area, cafeteria and first floor arts and crafts therapy room)
  - Terrazzo (reception and cafeteria)
  - Oak paneling (reception)

# Safe Steps

## Community

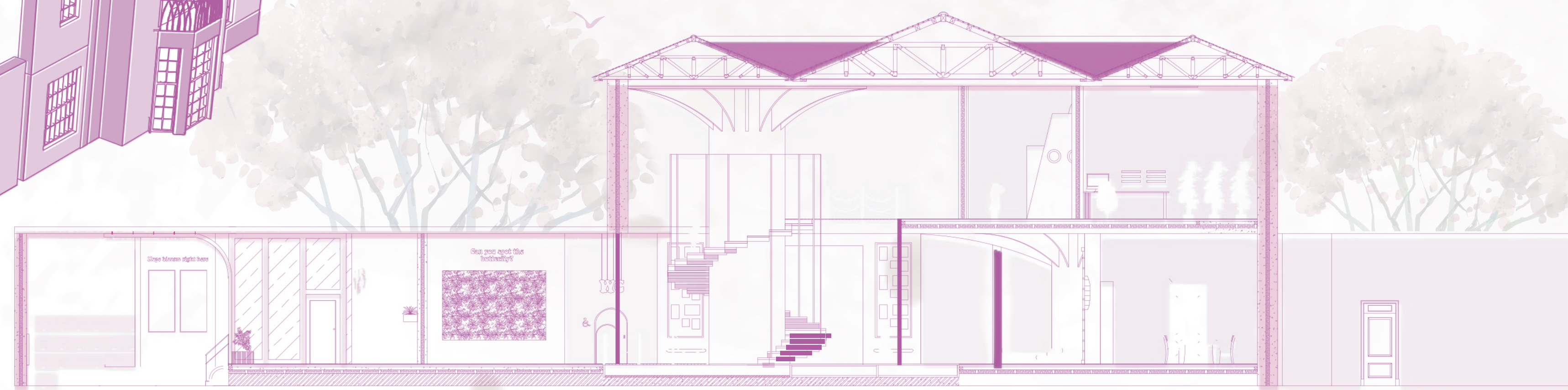
### Target Audience:

children aged 6–10 who have experienced trauma, specifically abuse. This age group is recognized as particularly vulnerable.

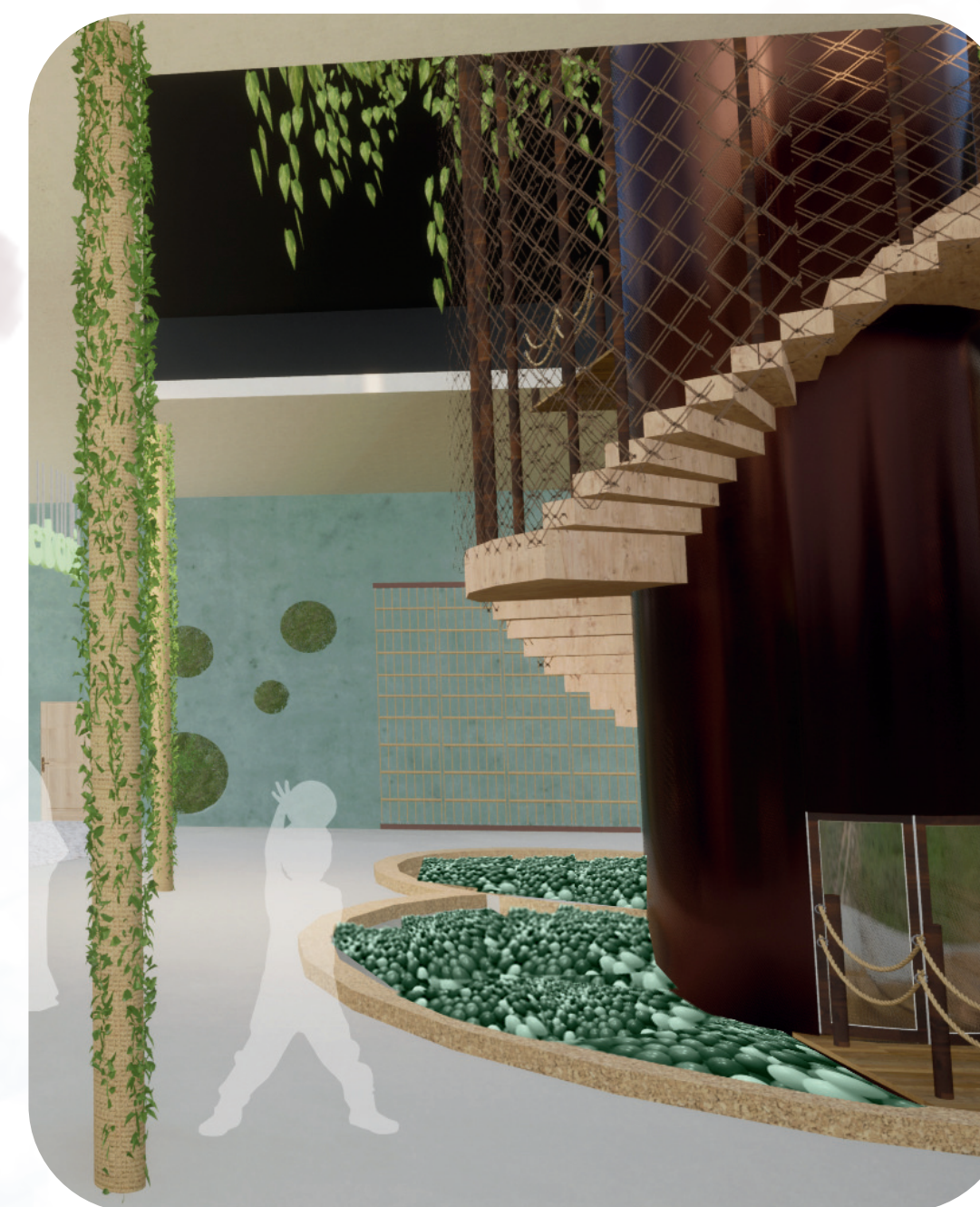
### Referral Pathways:

Educational Institutions: Teachers, school counsellors  
Support Services: Police, child protection agencies  
Healthcare Professionals: Therapists, paediatricians.  
Personal Networks: Friends, carers.

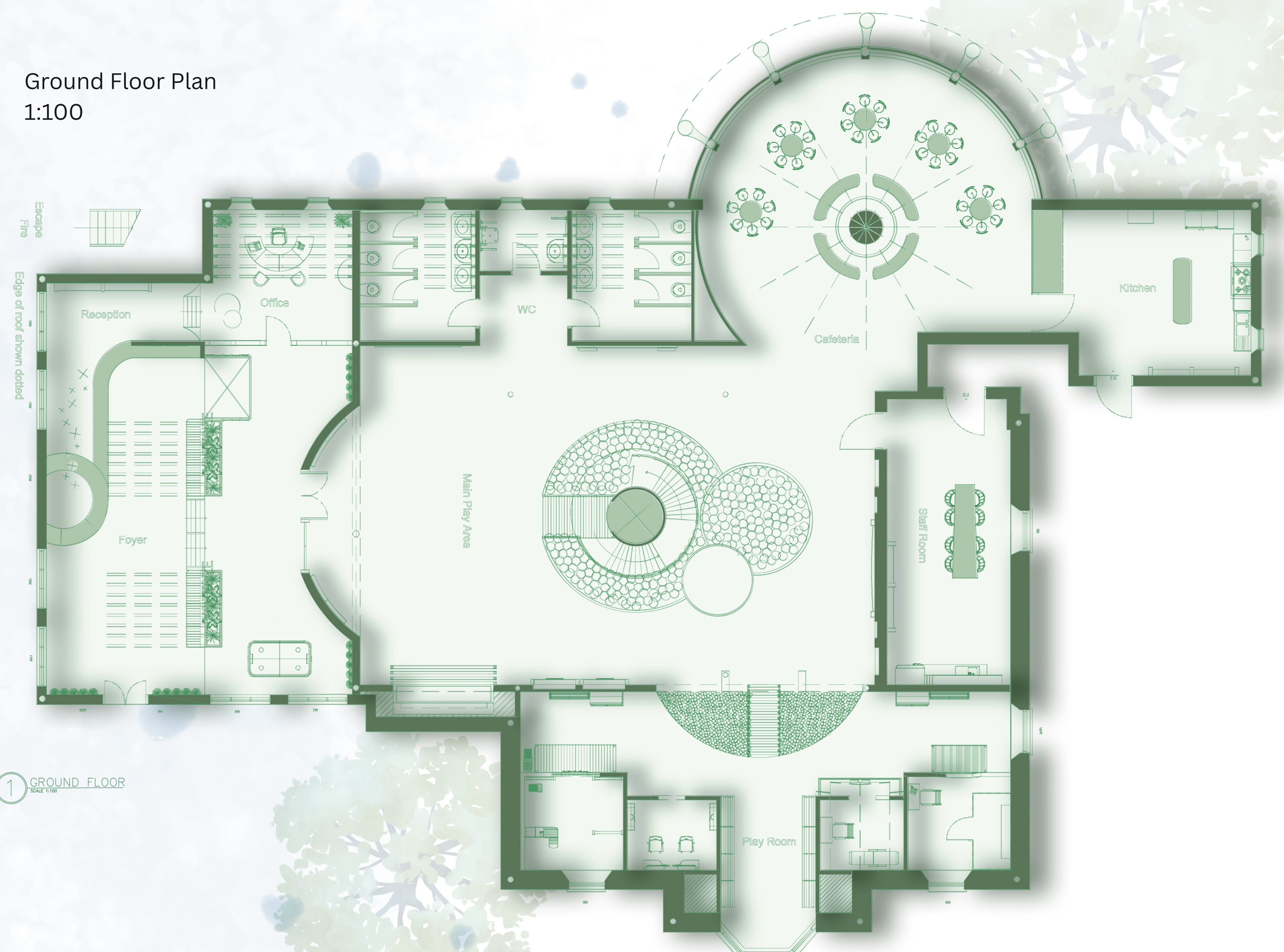
Long Section 1:100



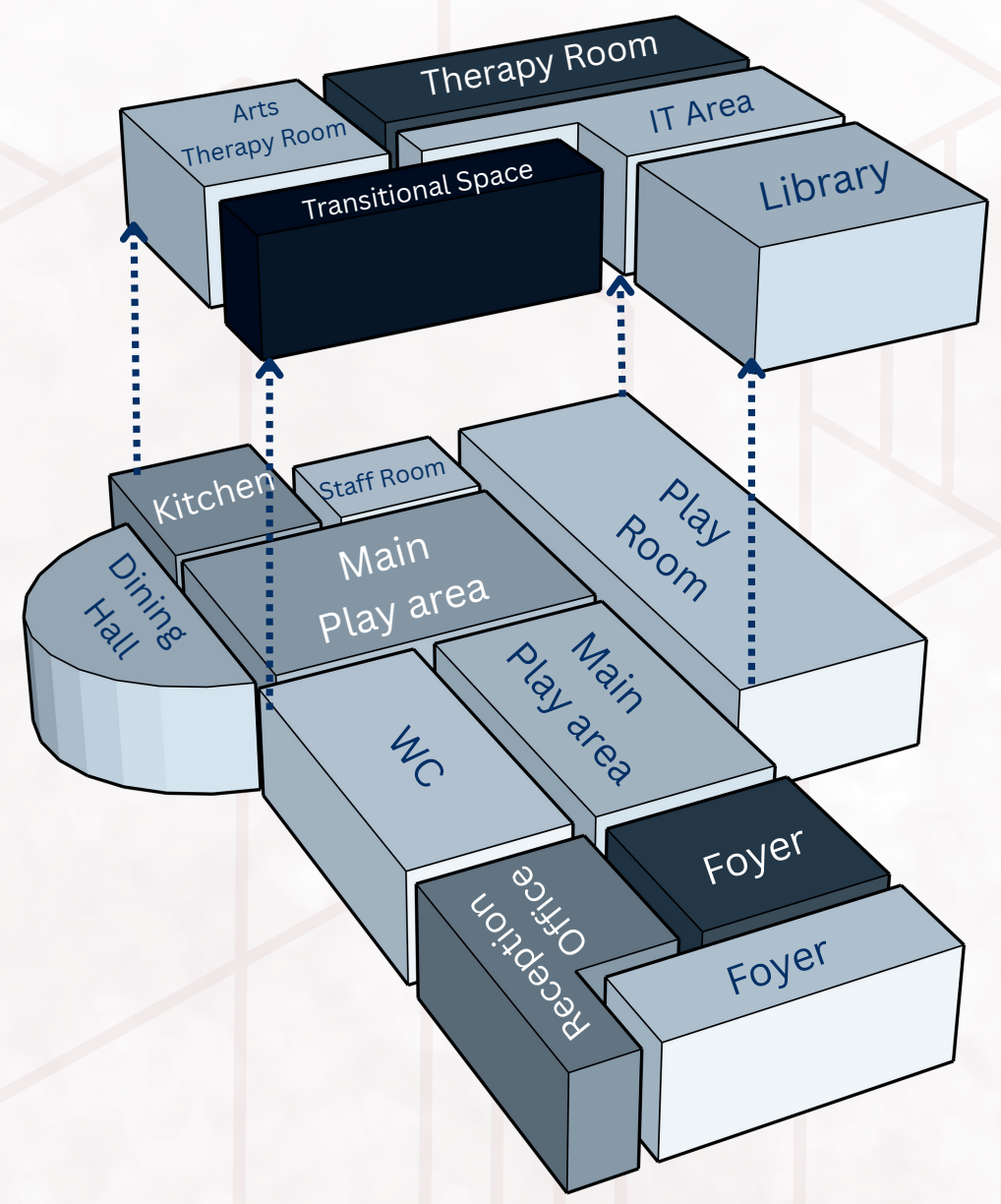
The ground floor is designed for active play and louder activities, encouraging movement and energetic exploration. Open spaces, playful structures, and biophilic elements create an environment where children can run, climb, and interact freely. In contrast, the first floor is dedicated to quieter, reflective spaces, supporting relaxation, reading, and creative therapy.



Ground Floor Plan 1:100





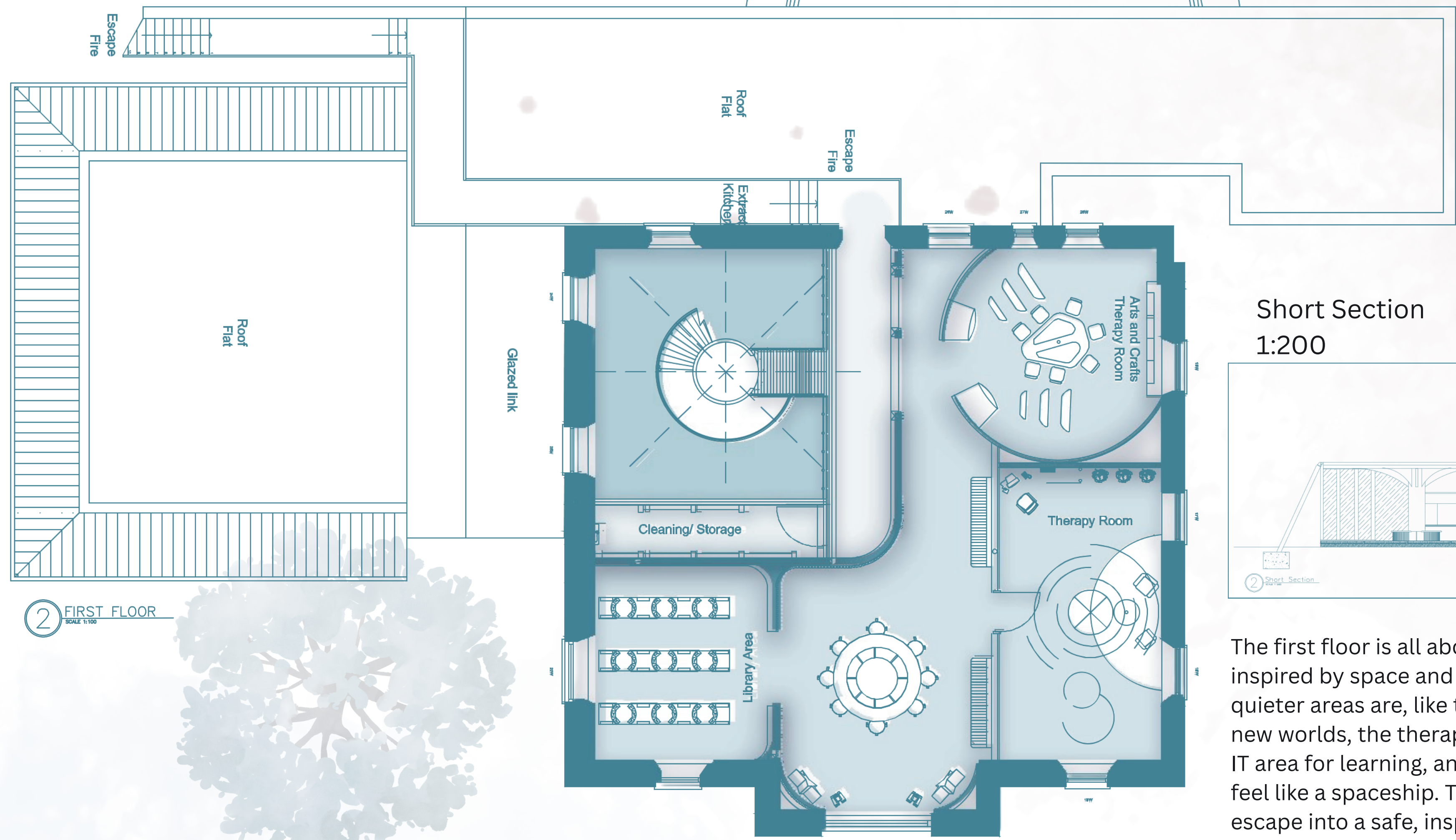


The ground floor has a reception area, office, main play space, dining hall, kitchen, playroom, staff room, and WC facilities, all built for play and social interaction. The first floor transforms into a peaceful imaginative environment complete with an arts therapy room, therapy room, IT area, library, and transition space to promote creativity and healing.

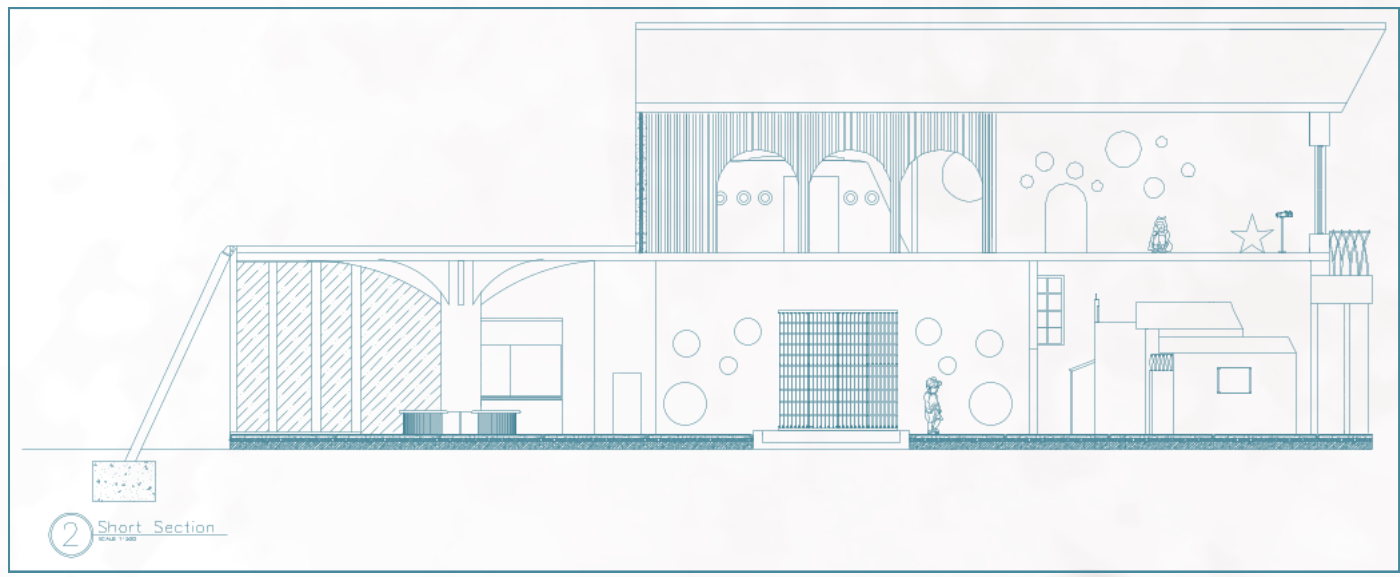
# Safe Steps

Community

First Floor Plan  
1:100



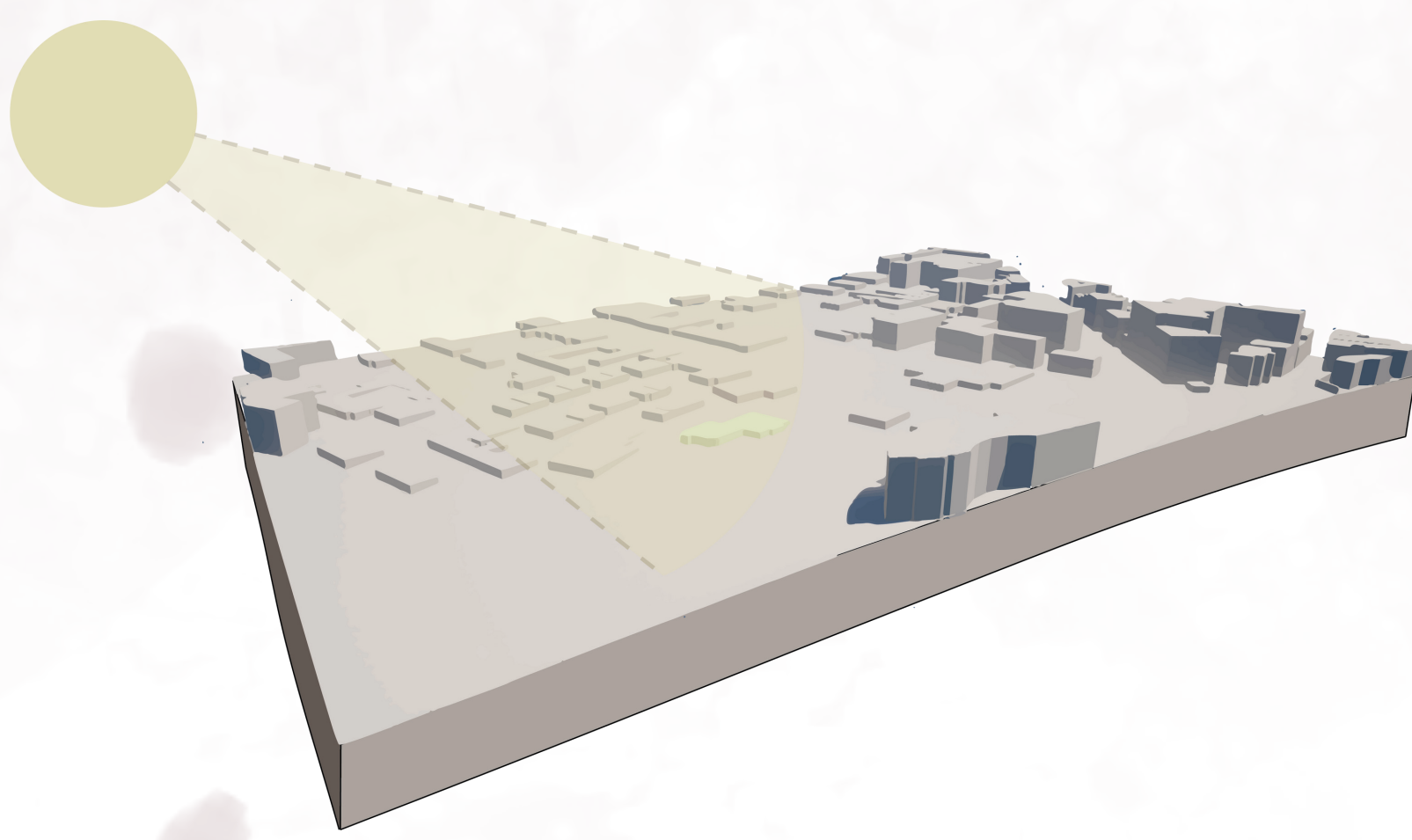
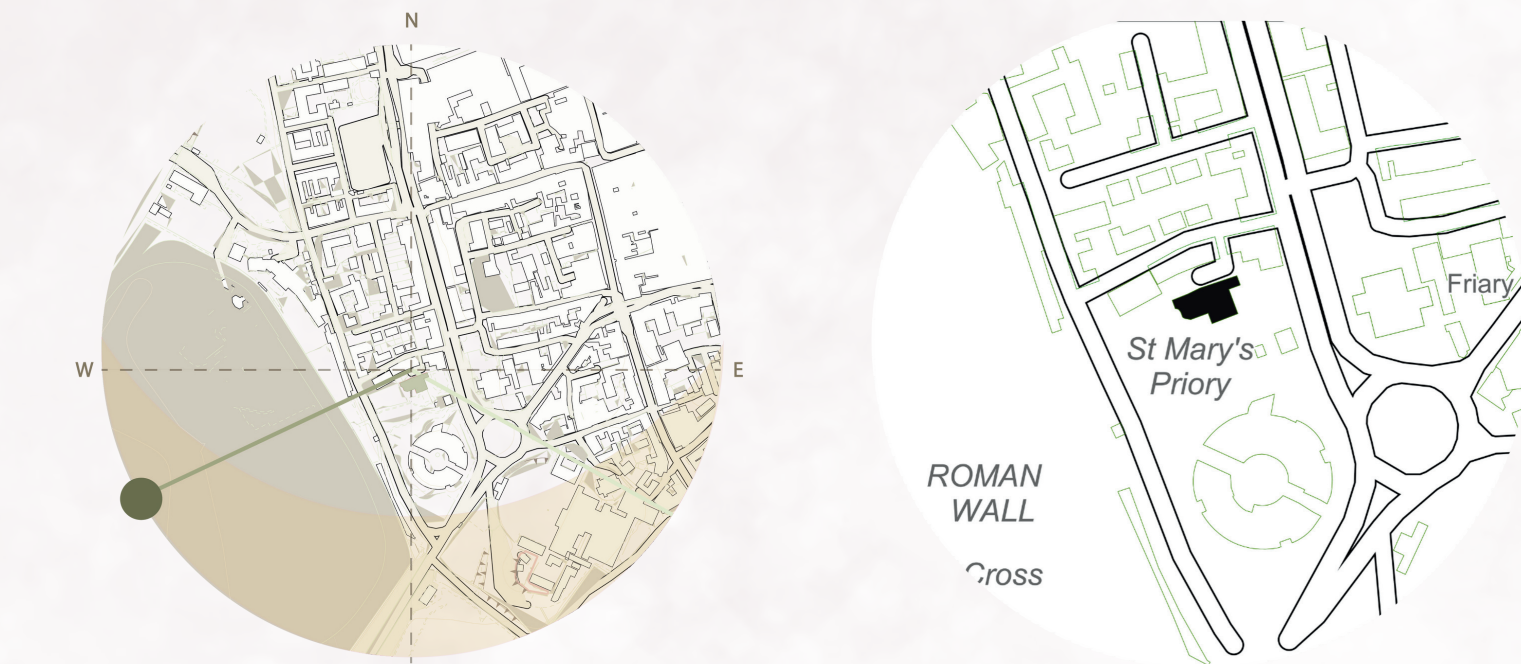
Short Section  
1:200



The Architect is situated in the northwest of England in the historic city of Chester. Nicholas Street, just south of the city centre, is where the site is located.

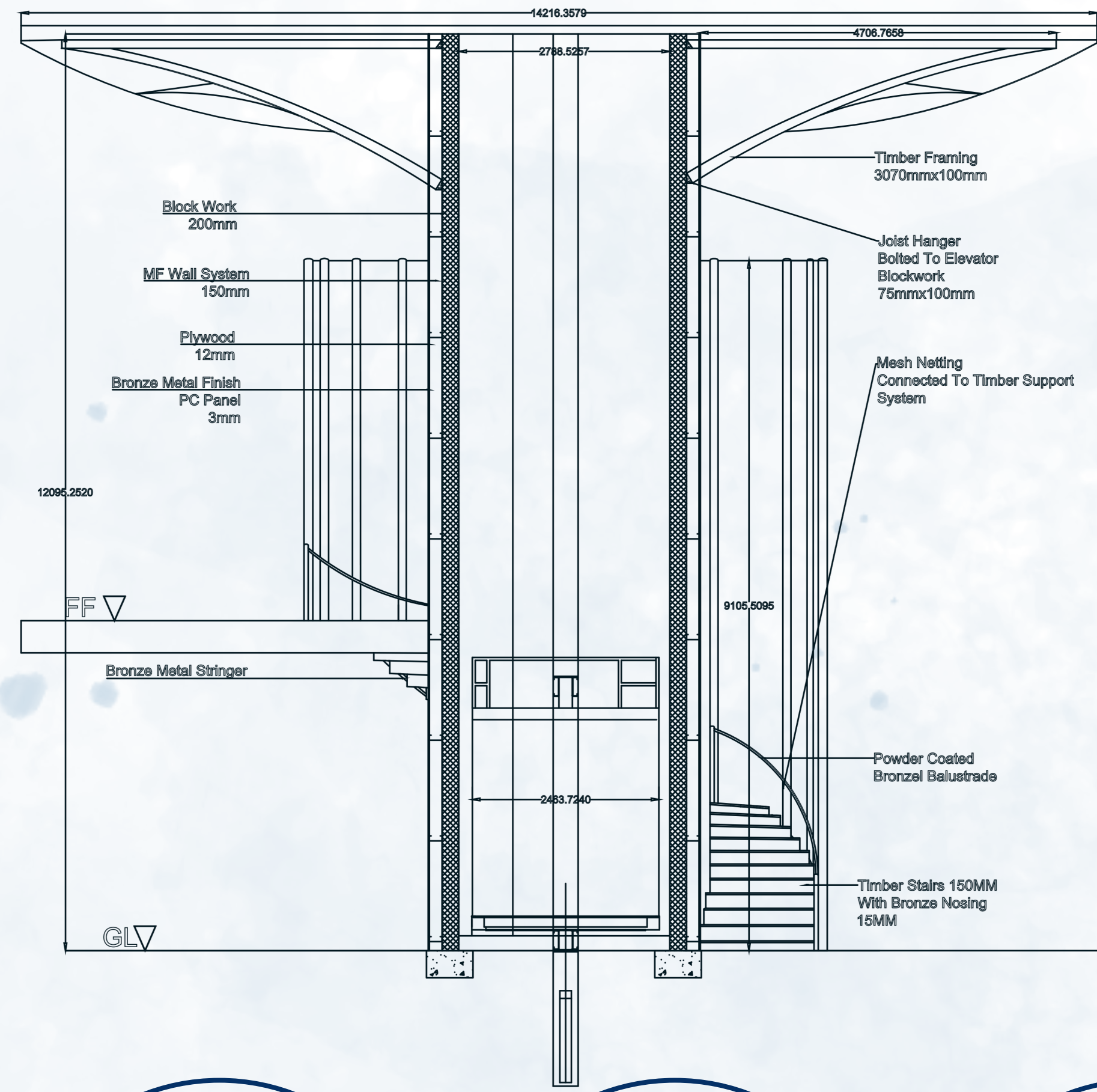
Chester is a city that is easily accessible. Within walking distance of The Architect are many means of public transport.

Chester, located in Western United Kingdom, is a historic city with a rich history.

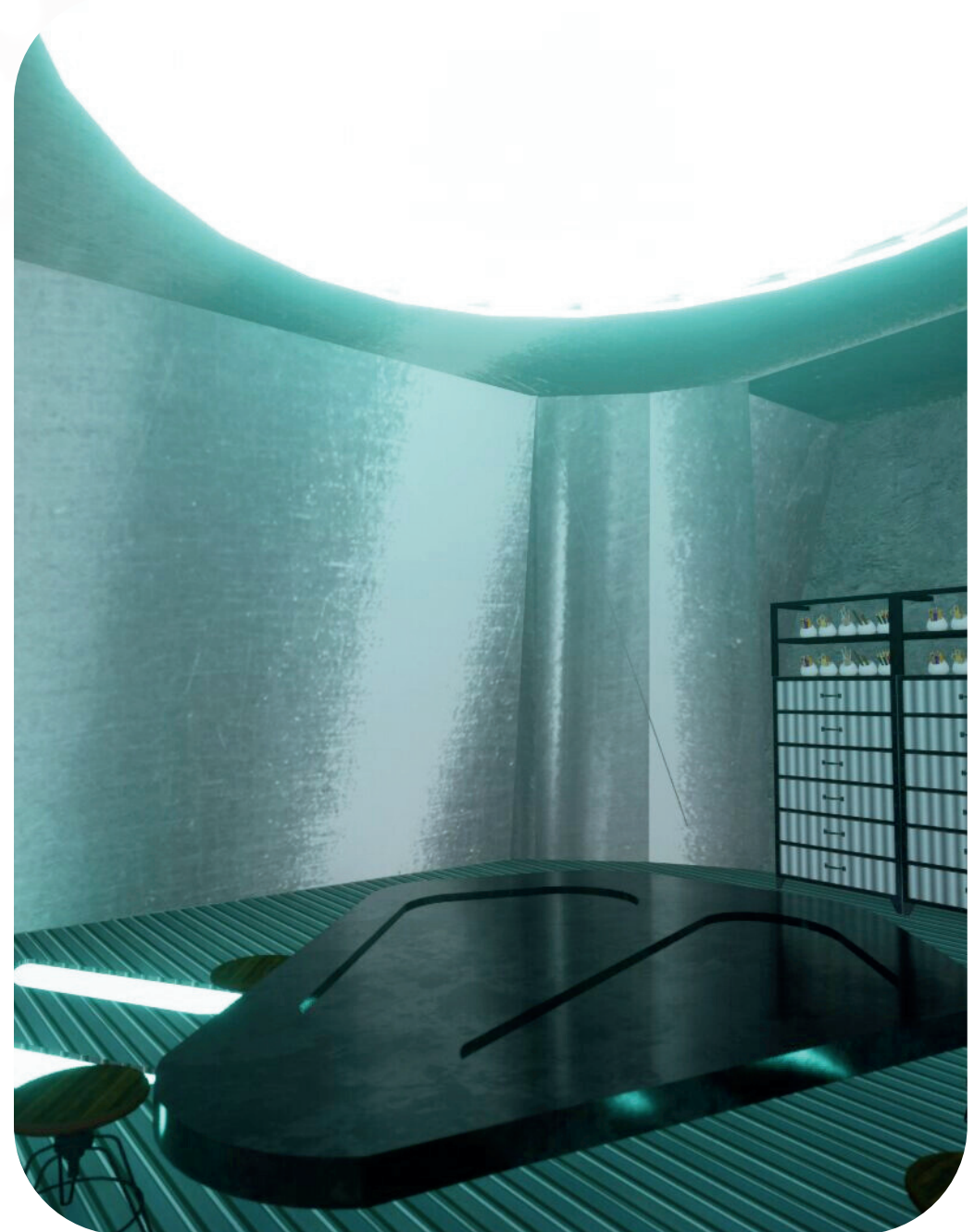
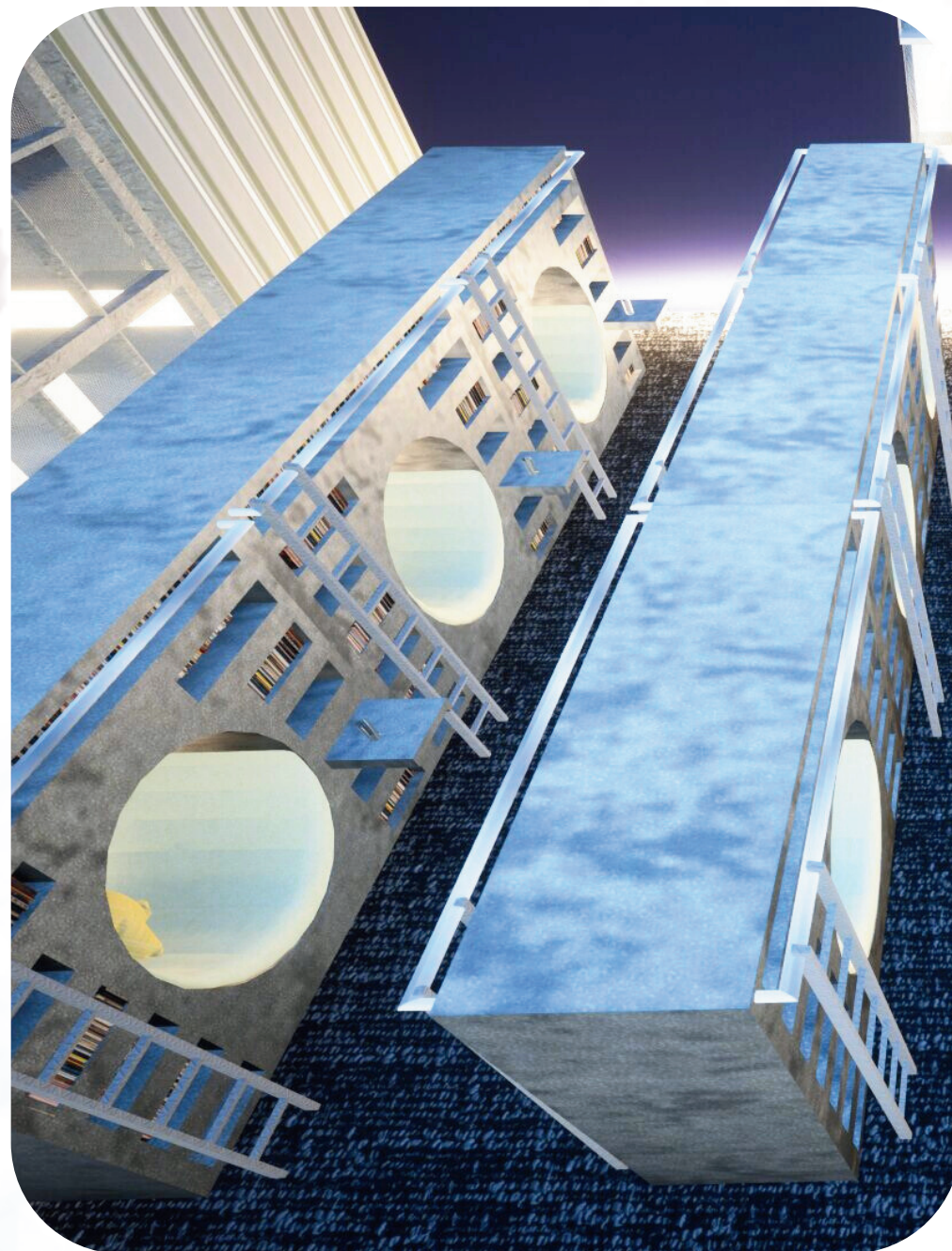
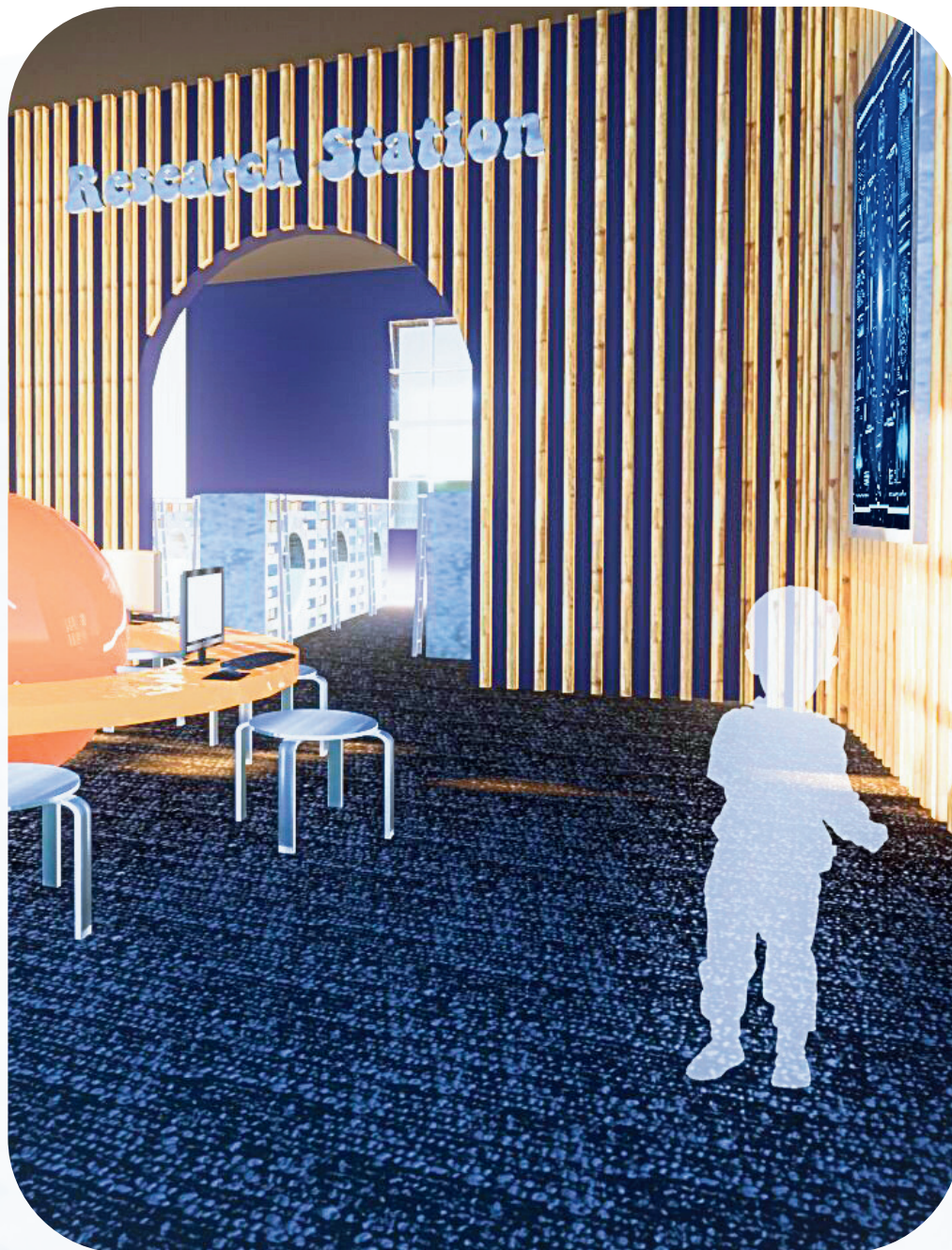


The first floor is all about calmness and imagination, inspired by space and science fiction. It's where the quieter areas are, like the library for reading and exploring new worlds, the therapy room for support and healing, the IT area for learning, and the arts therapy room, designed to feel like a spaceship. This floor is meant to help children escape into a safe, inspiring place where they can grow and feel supported.

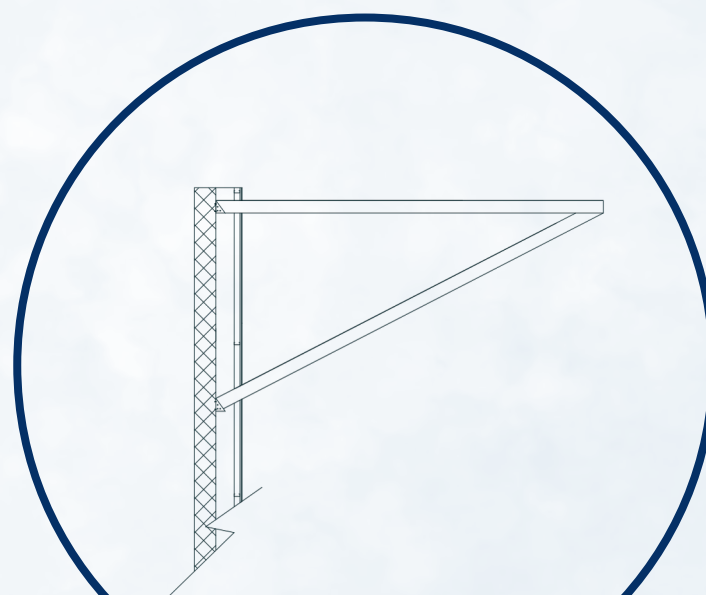
Lift and Staircase  
Section 1:60



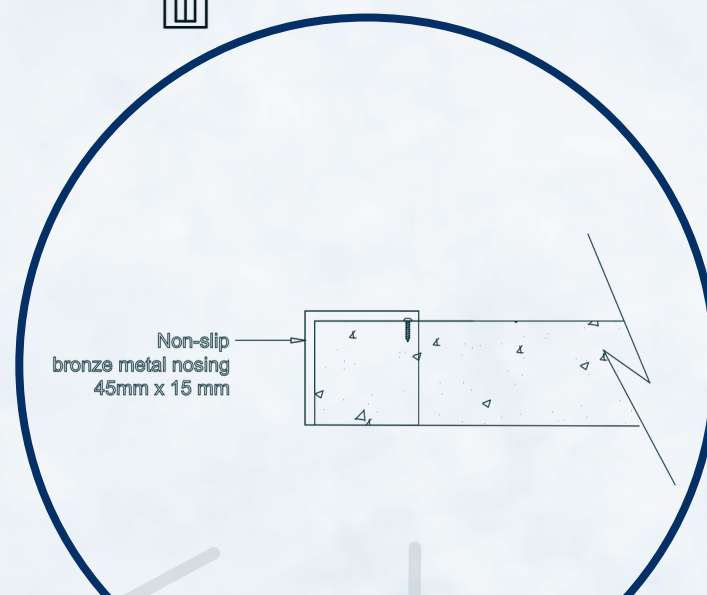
The lift and staircase are designed to look like an abstract tree, symbolizing growth and connection. The lift is made of bronze and goes up one floor, with a spiral staircase wrapping around it. For safety, the whole structure is enclosed in a mesh material, keeping it secure while still letting light through. This design creates a smooth and inspiring transition between the 'Earth' and 'Space' themed floors.



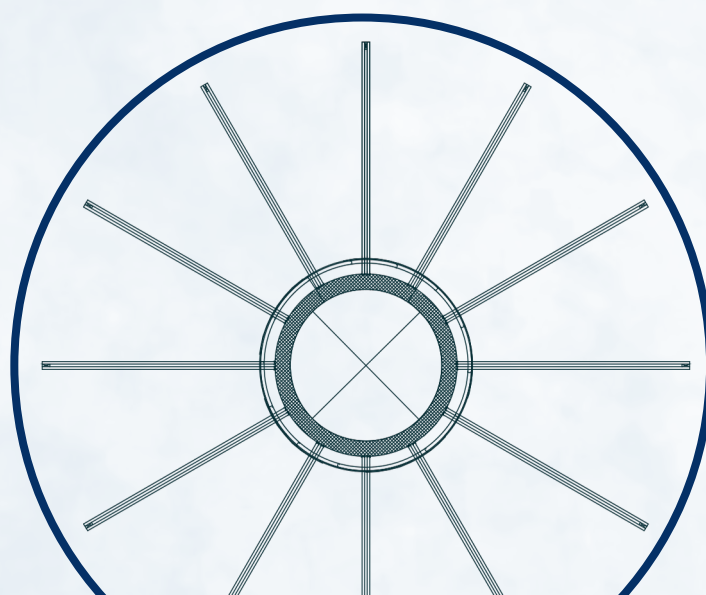
Colour Palette



Timber beams  
connected to elevator shaft



Nosing detail



Plan View

Material Board



List of Materials:  
Bamboo panelling  
(first floor entrance)

Twist carpet  
(first floor main area, library area,  
therapy room)

Powder coated steel  
(first floor arts and crafts therapy  
room)

Steel panels  
(arts and crafts therapy room)

Aluminium  
(arts and crafts therapy room)

The materials on the first floor provide a sense of contemporary calm and exploration, combining natural bamboo warmth with soft twist carpets and elegant metal accents for a space-inspired atmosphere.

