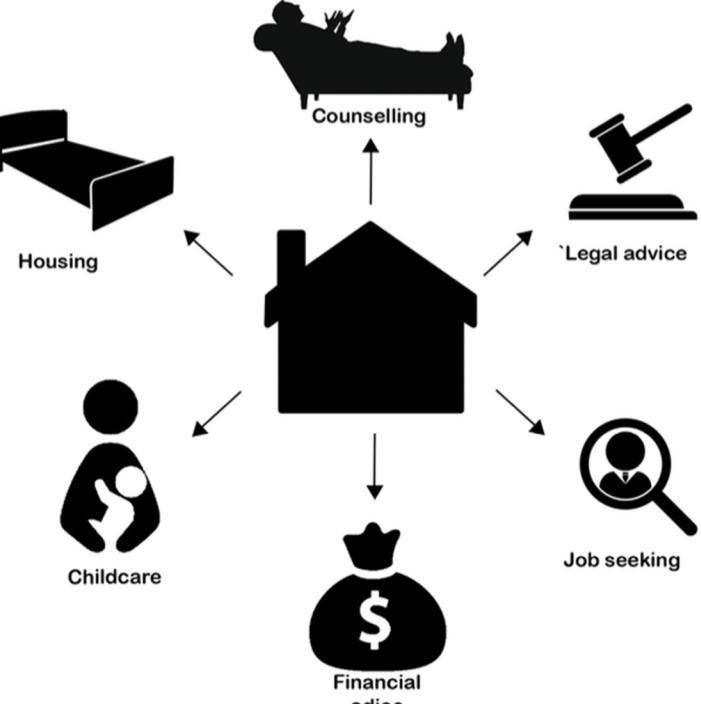




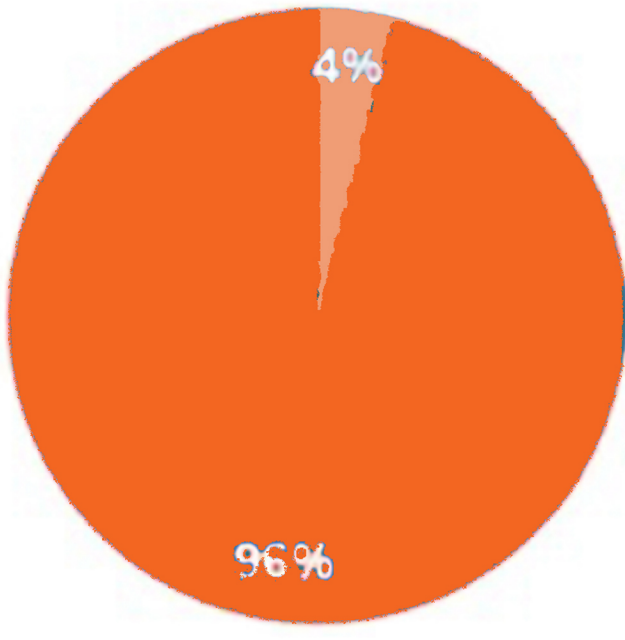
# REFUGE CENTRE



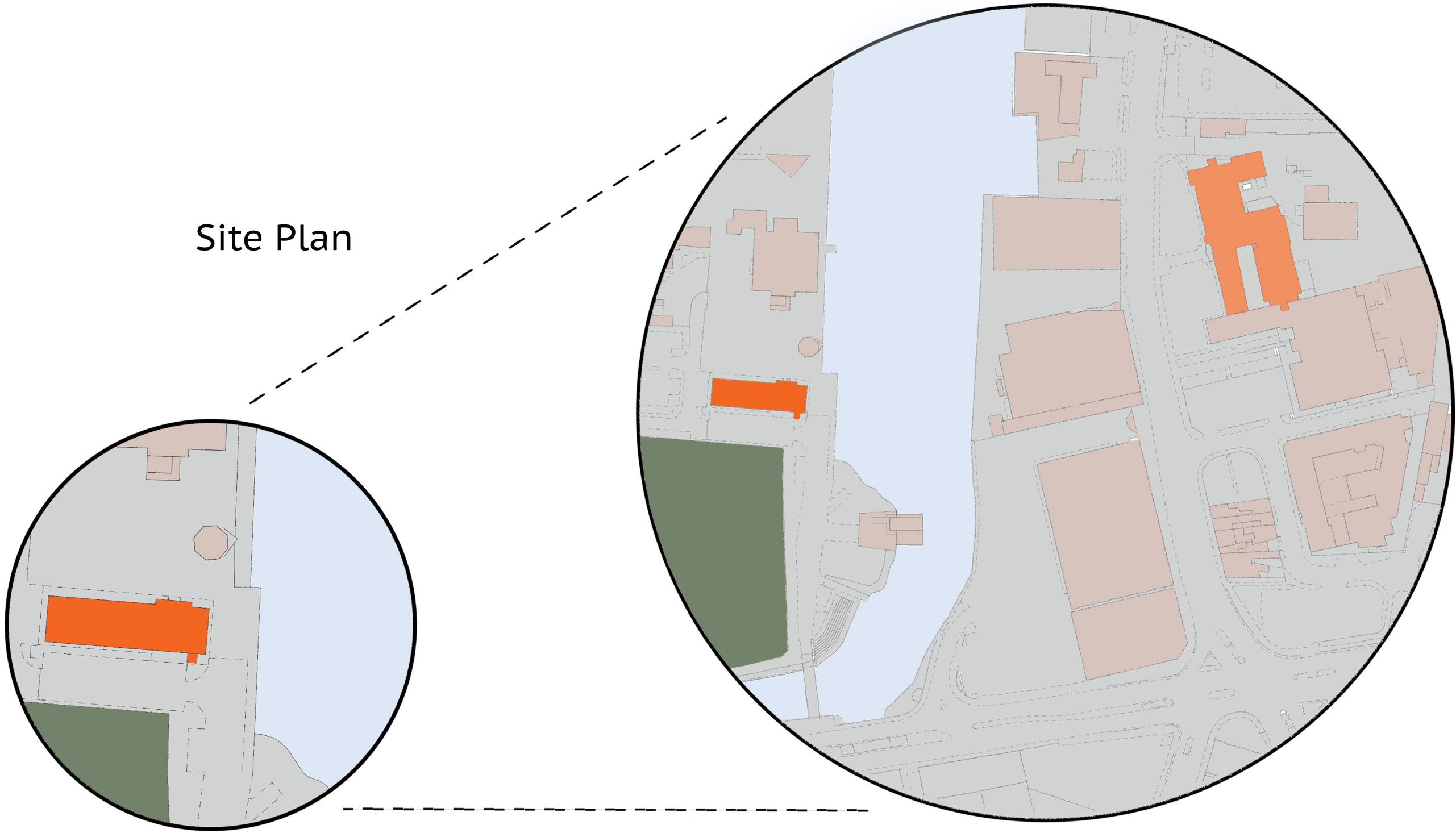
Domestic violence against women is an ongoing issue in the Grimsby area. The regufe centre, Heritage House, Grimsby aims to create a space that is secure but also doesn't make women feel trapped. Entering a refuge centre can be a huge part of a woman's experience with domestic violence, making the comforting and welcoming aspect huge.



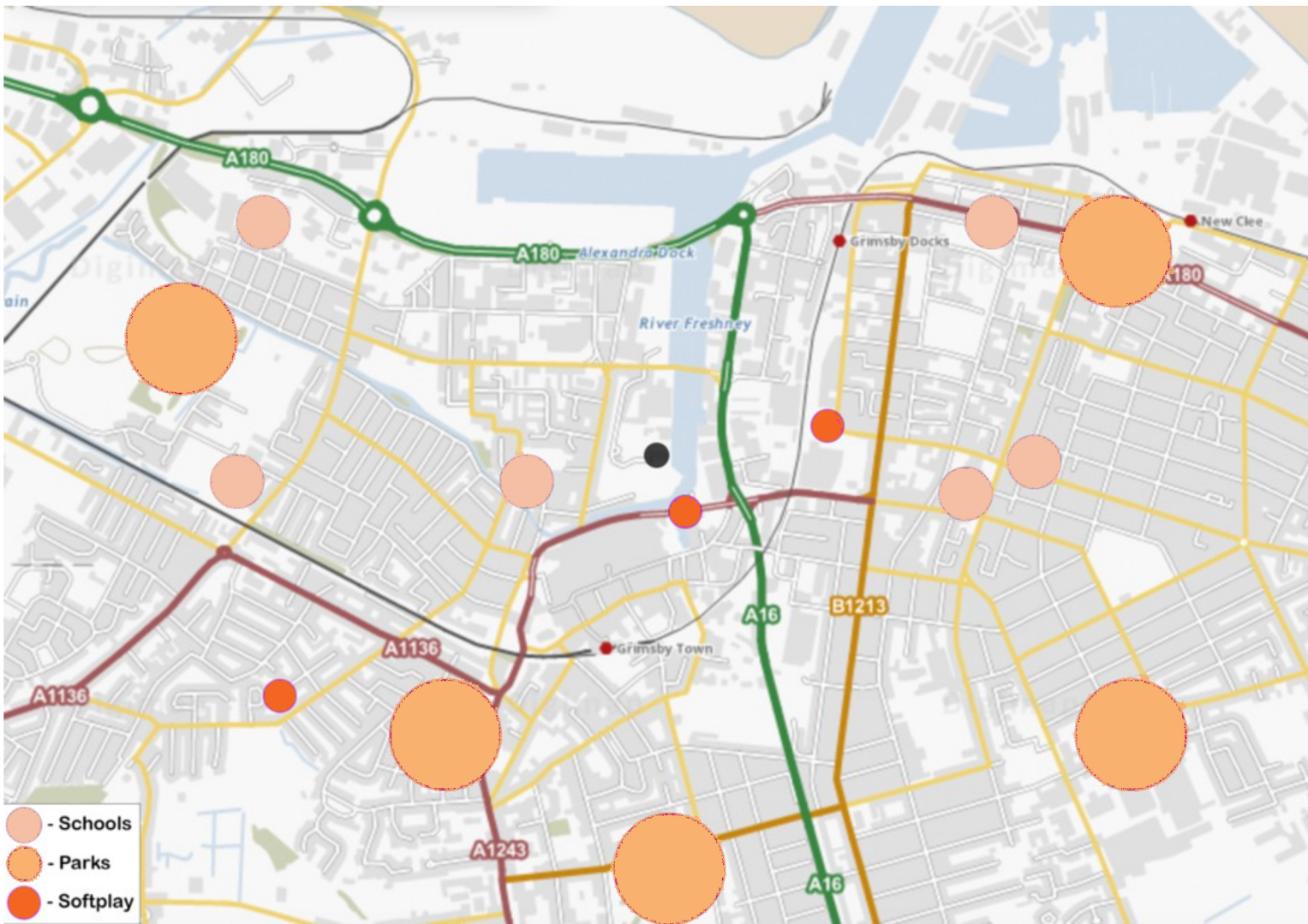
The refuge centre offers a variety of facilities to help women overcome their past and move on. This includes advice on moving forward from legal professionals as well as support in finding a job and finances if needed. There is also support when it comes to childcare so women are able to relax and recover knowing their children are cared for.



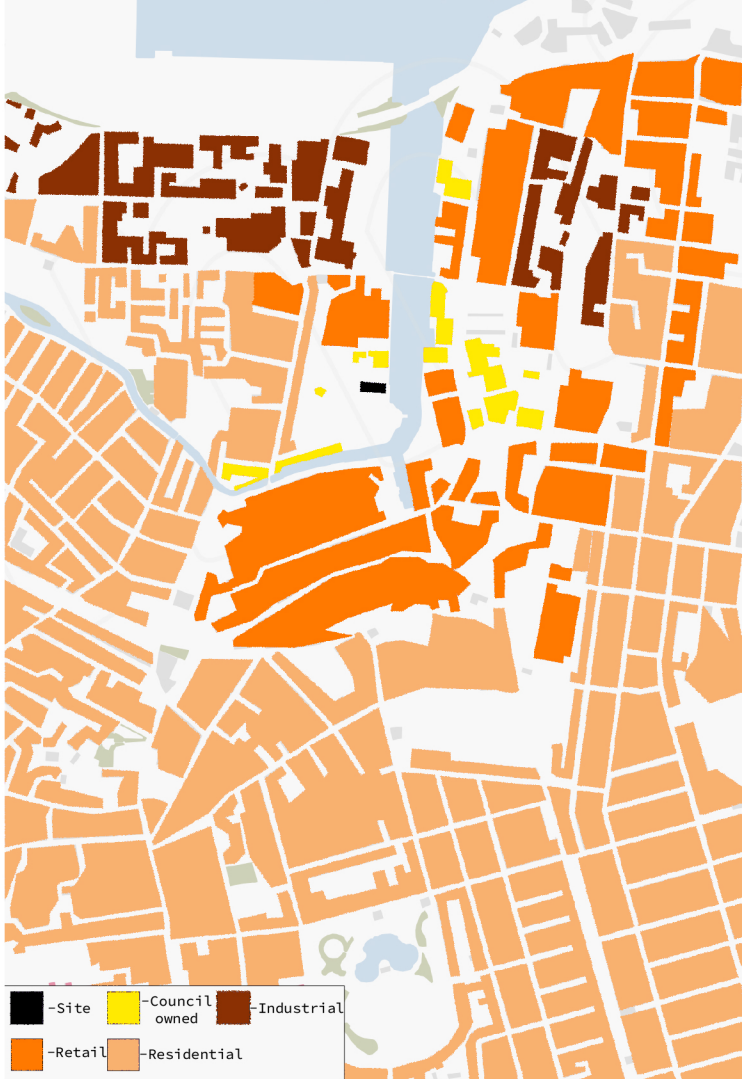
This pie chart represents the percentage of women with children who experience domestic violence within Grimsby. 4% which equals to just over 3500 people who are in need of a refuge centre. This number only represents the number of women who have come forward.



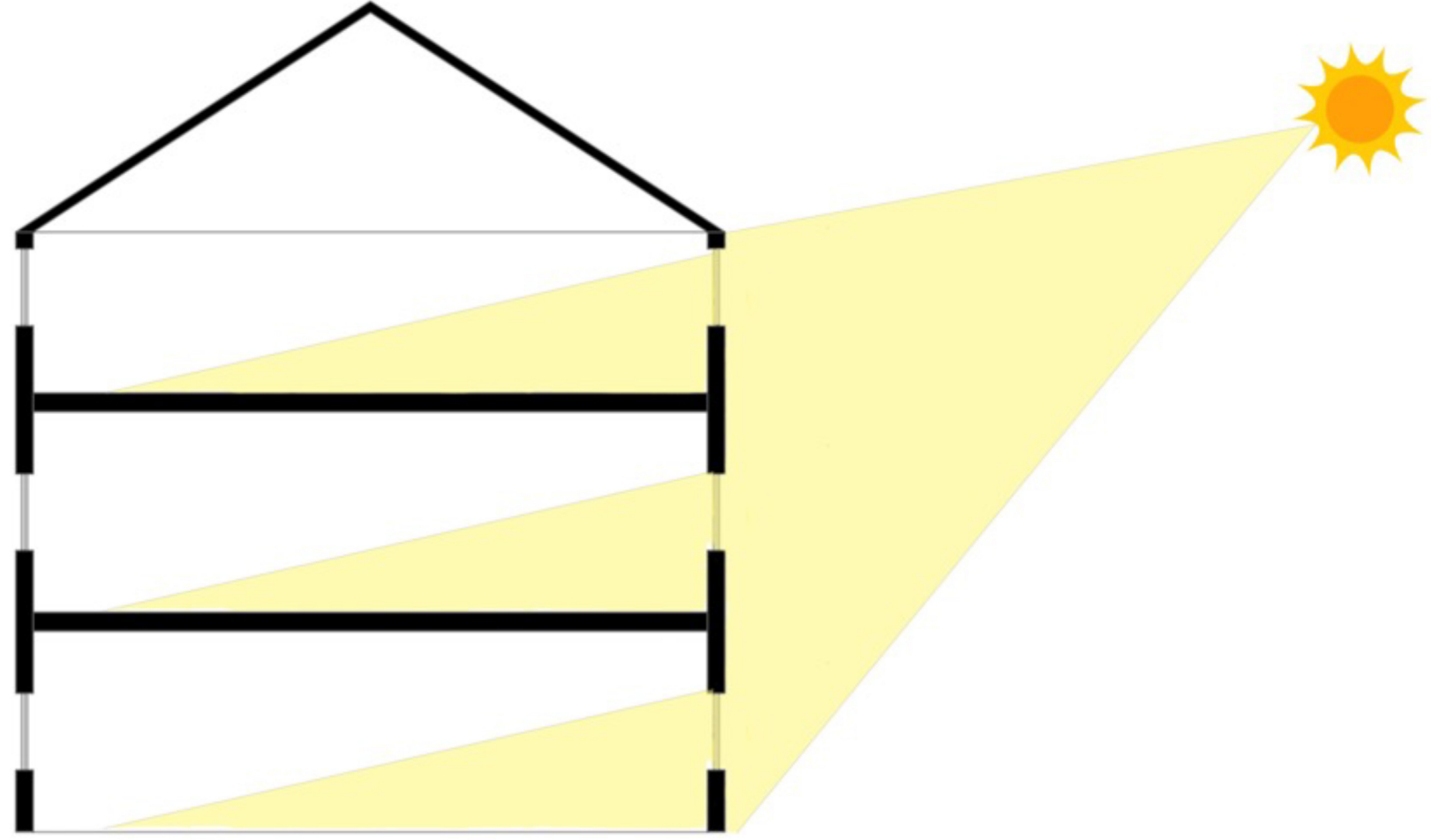
Walking distances



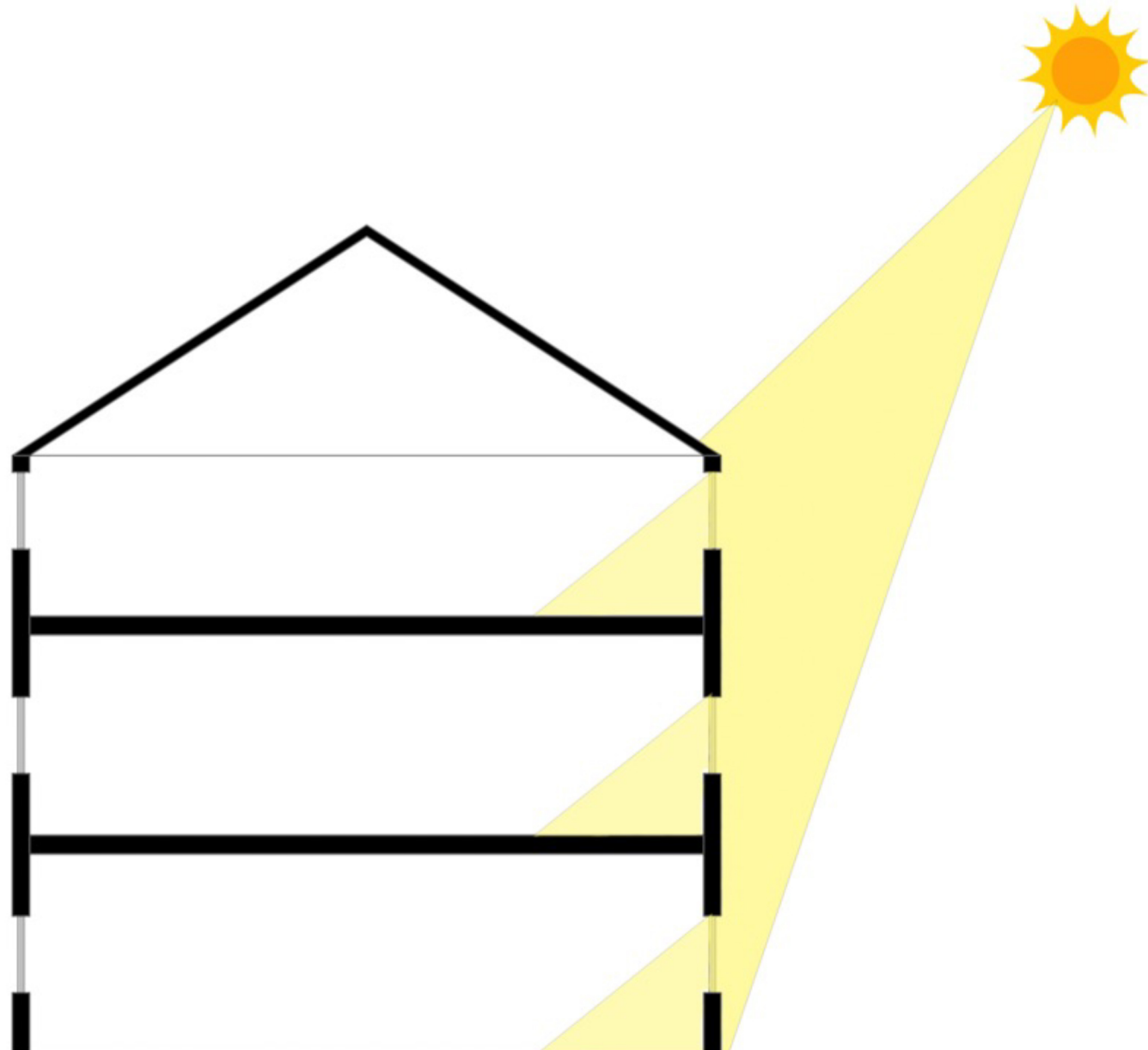
Surrounding facilities



Building types

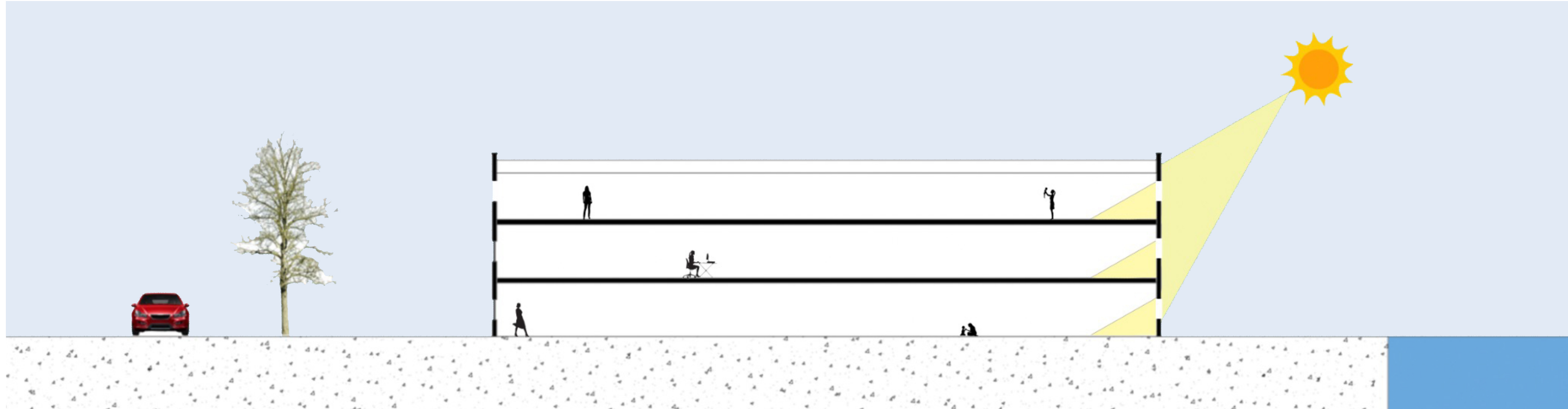


Winter sun

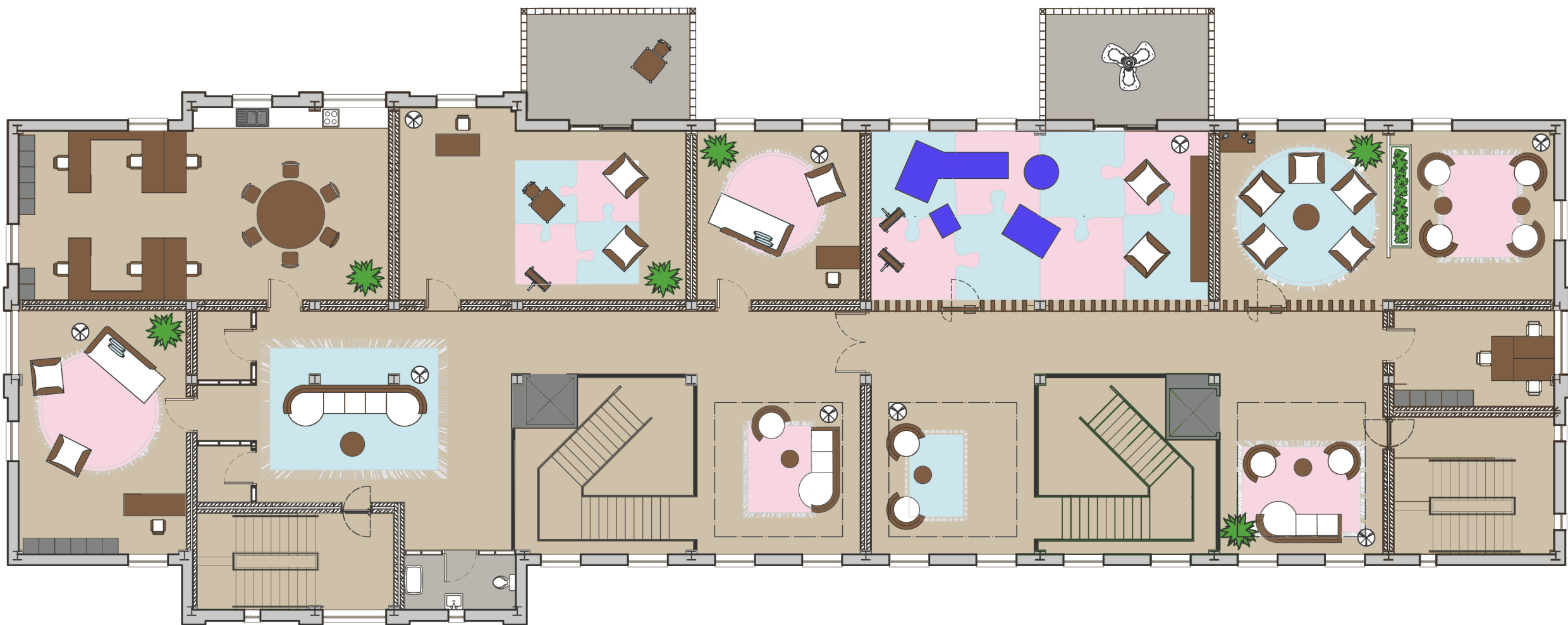


Summer sun

Natural sunlight has been proven to increase the mental wellbeing of people when they are exposed to it. Other positives include increased production of vitamin D, increased energy levels as well as stress reduction and anxiety relief. These outcomes of exposure to sunlight are all beneficial to people recovering from domestic violence. The design of Heritage house has been opened up, as well as adding skylights, to increase the amount of natural sunlight throughout the building. Balconies have also been added to create a safe outdoor space to also access sunlight.



Second floor 1:100



First floor 1:100



Family visiting



Children's therapy



Residential



Ground floor 1:100



Long section 1:100