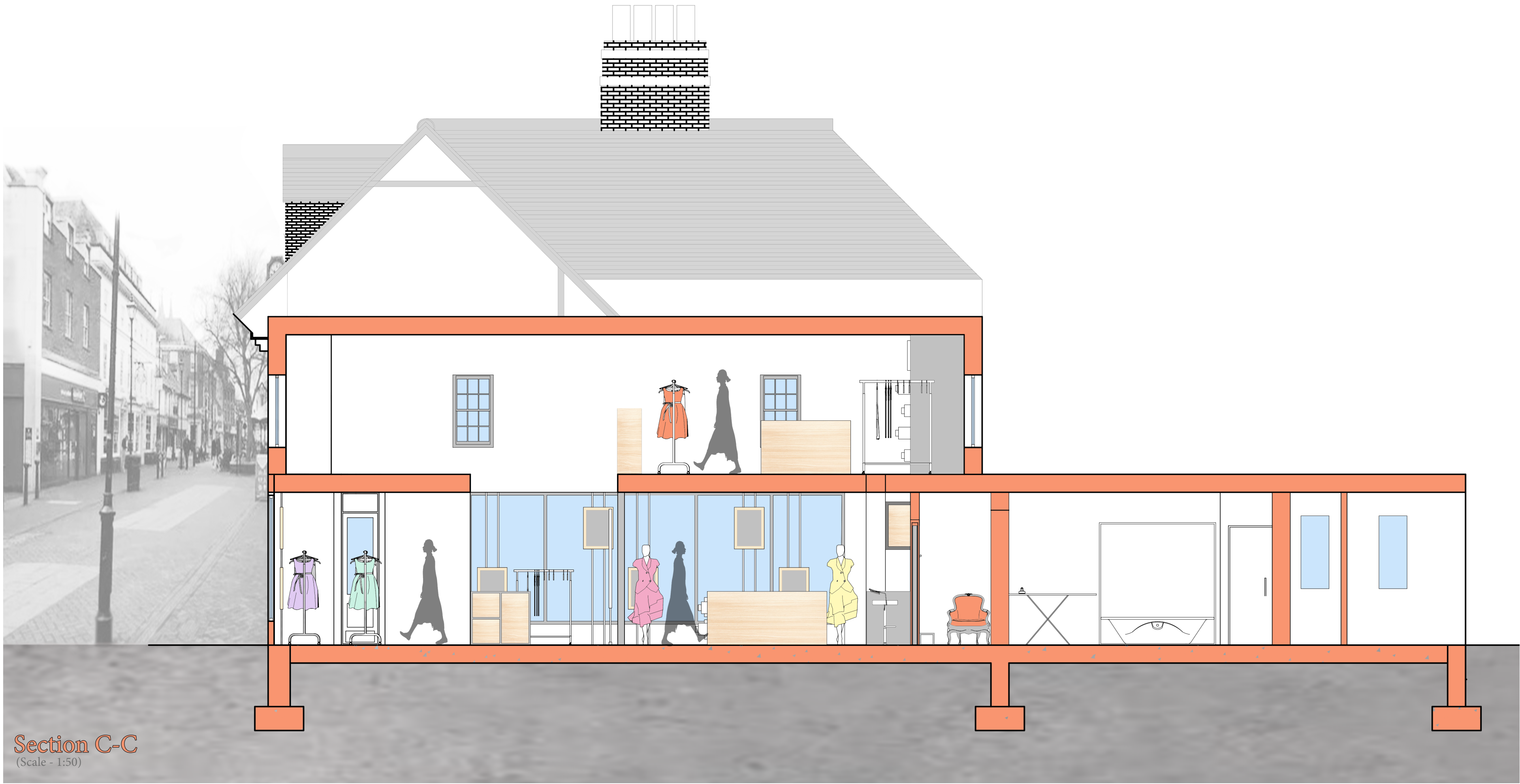
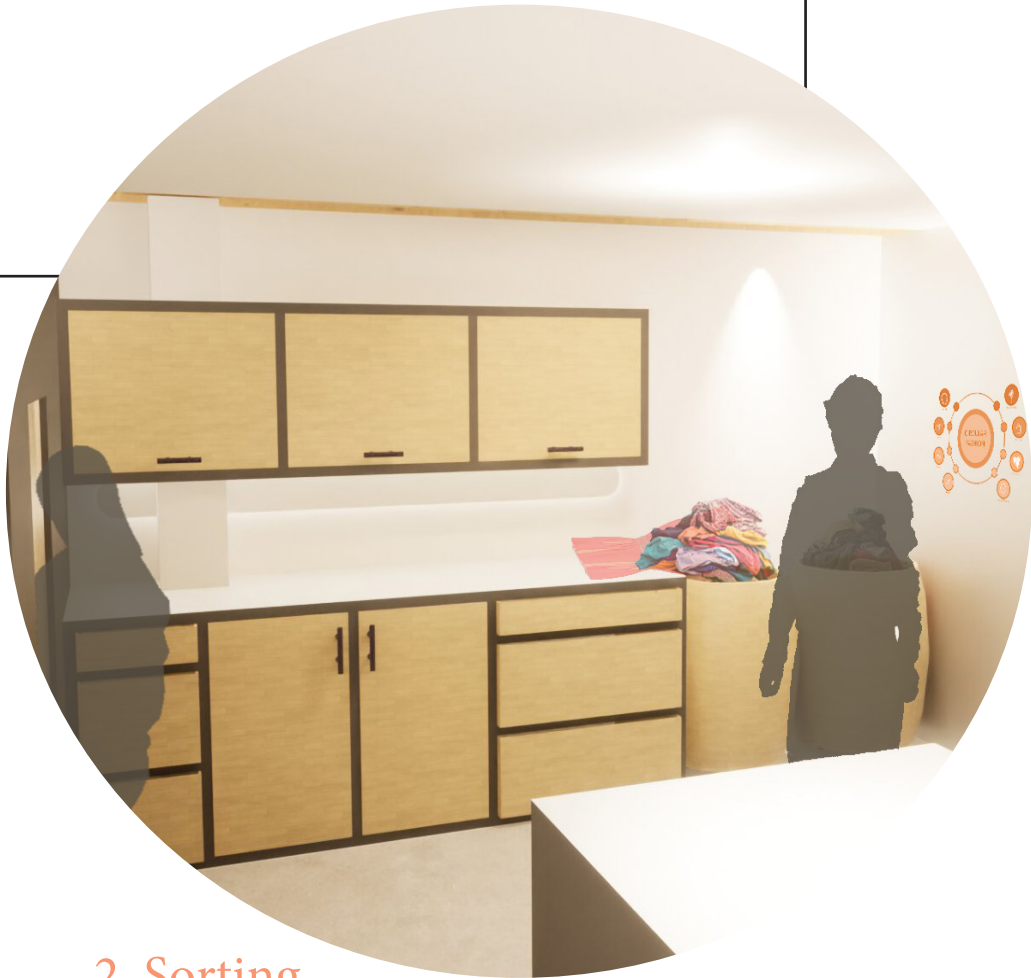
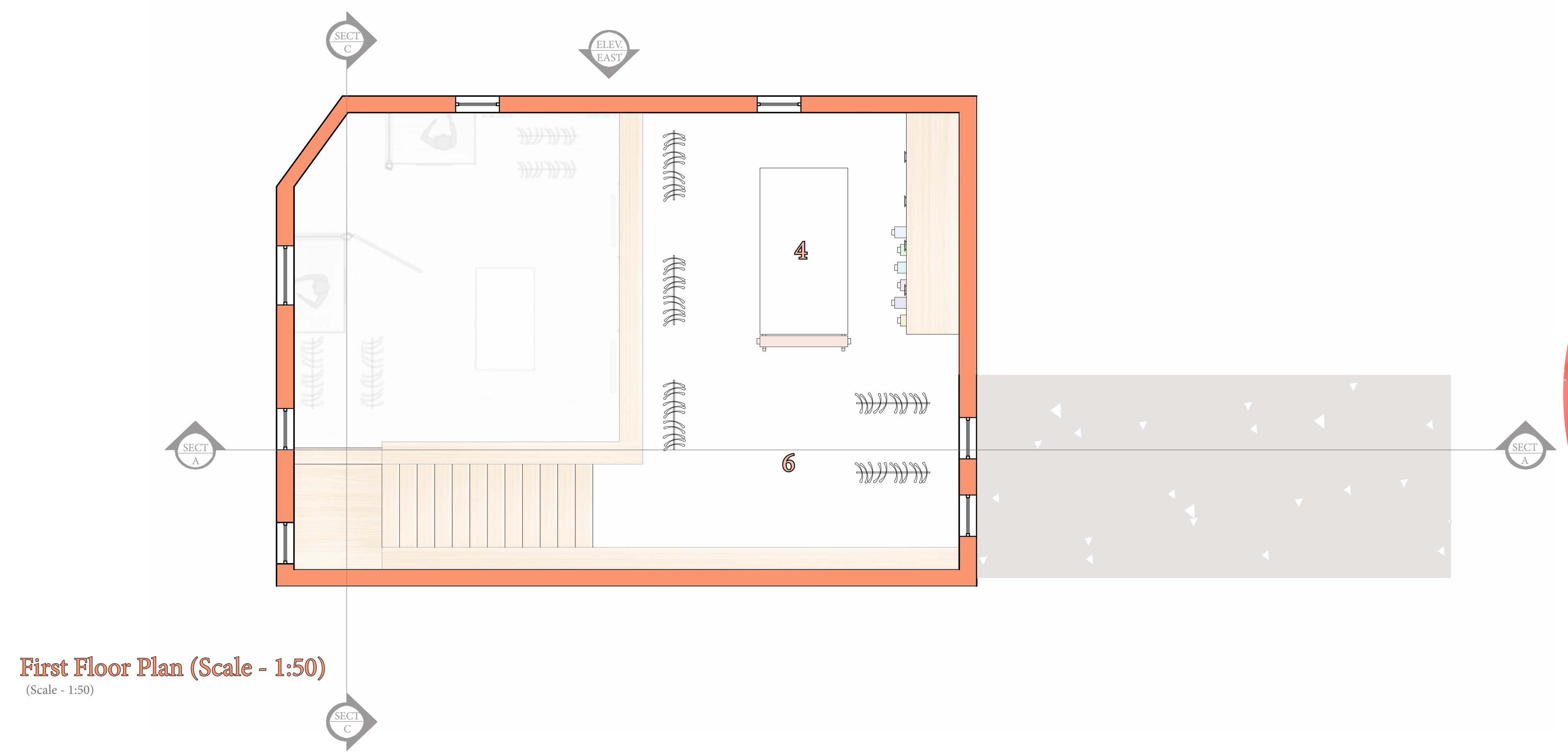


The 6 Stages Of Production

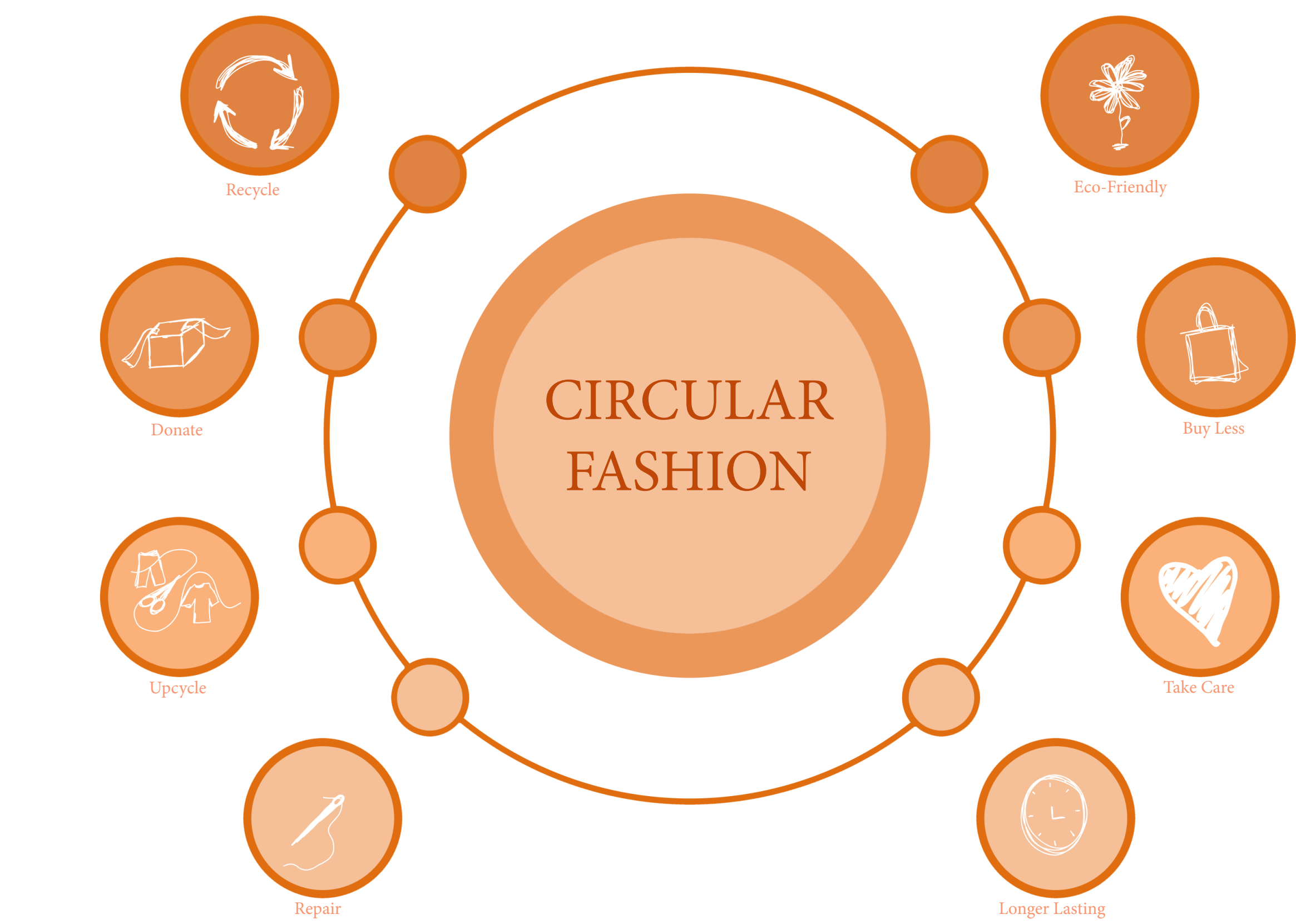




Brief

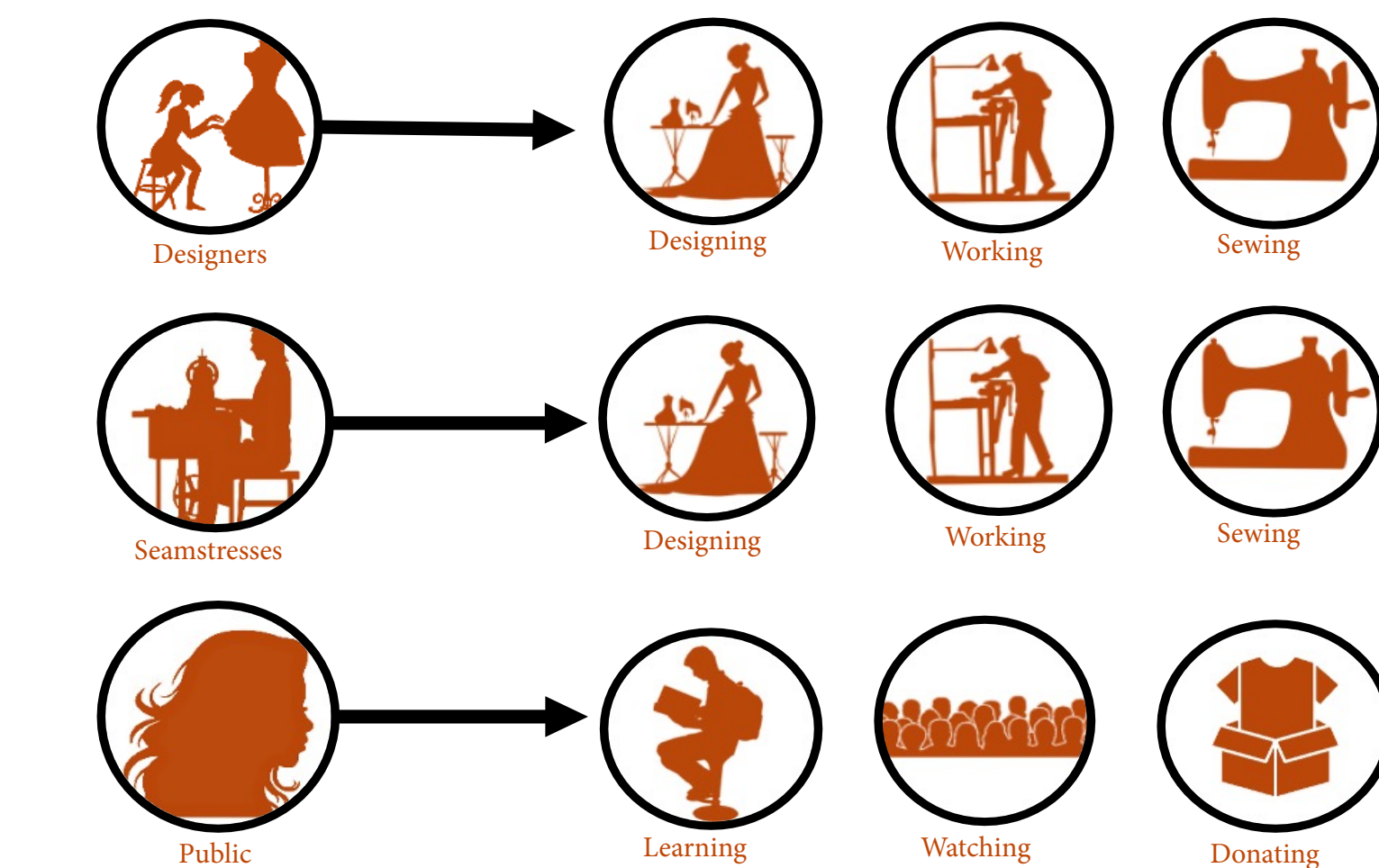
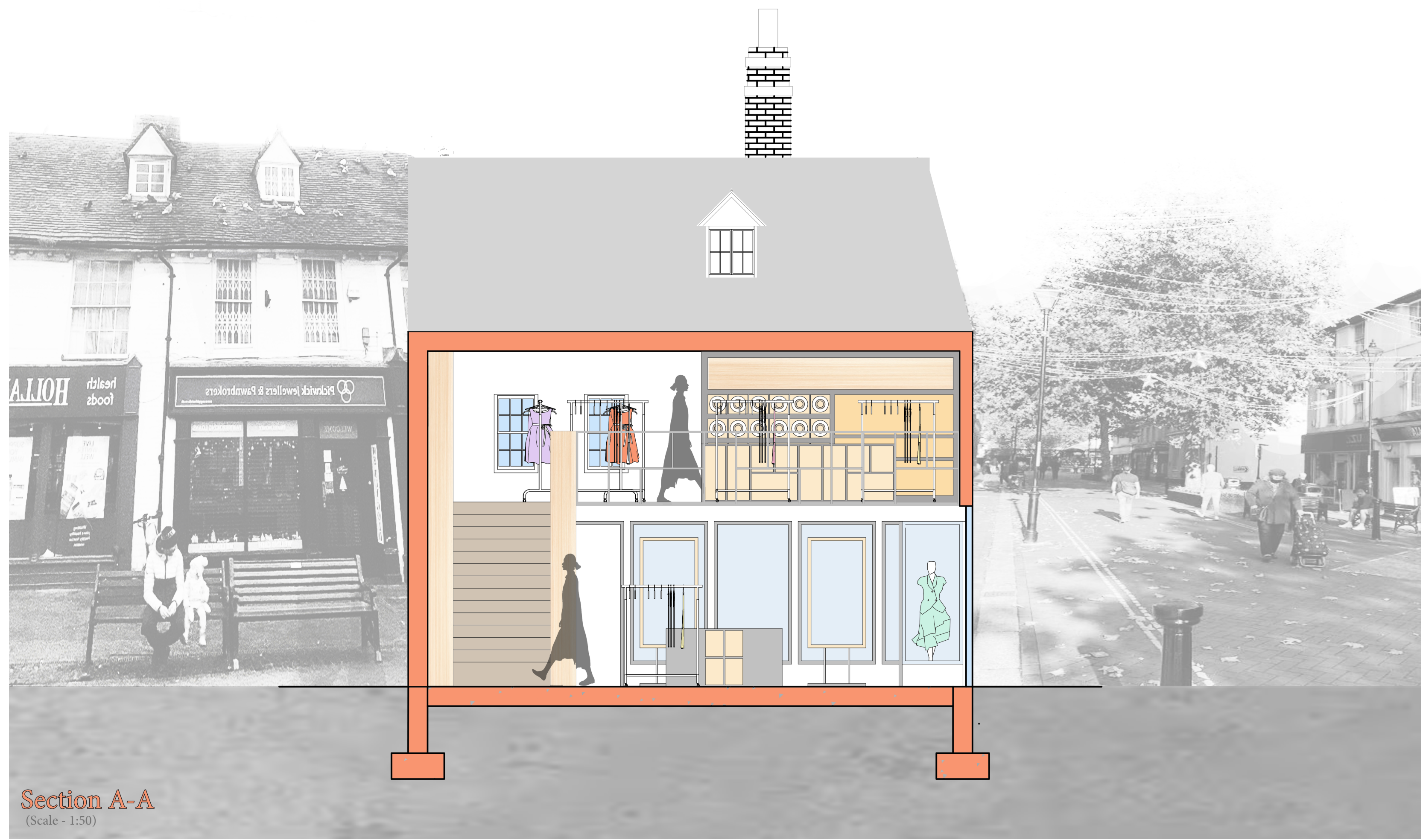
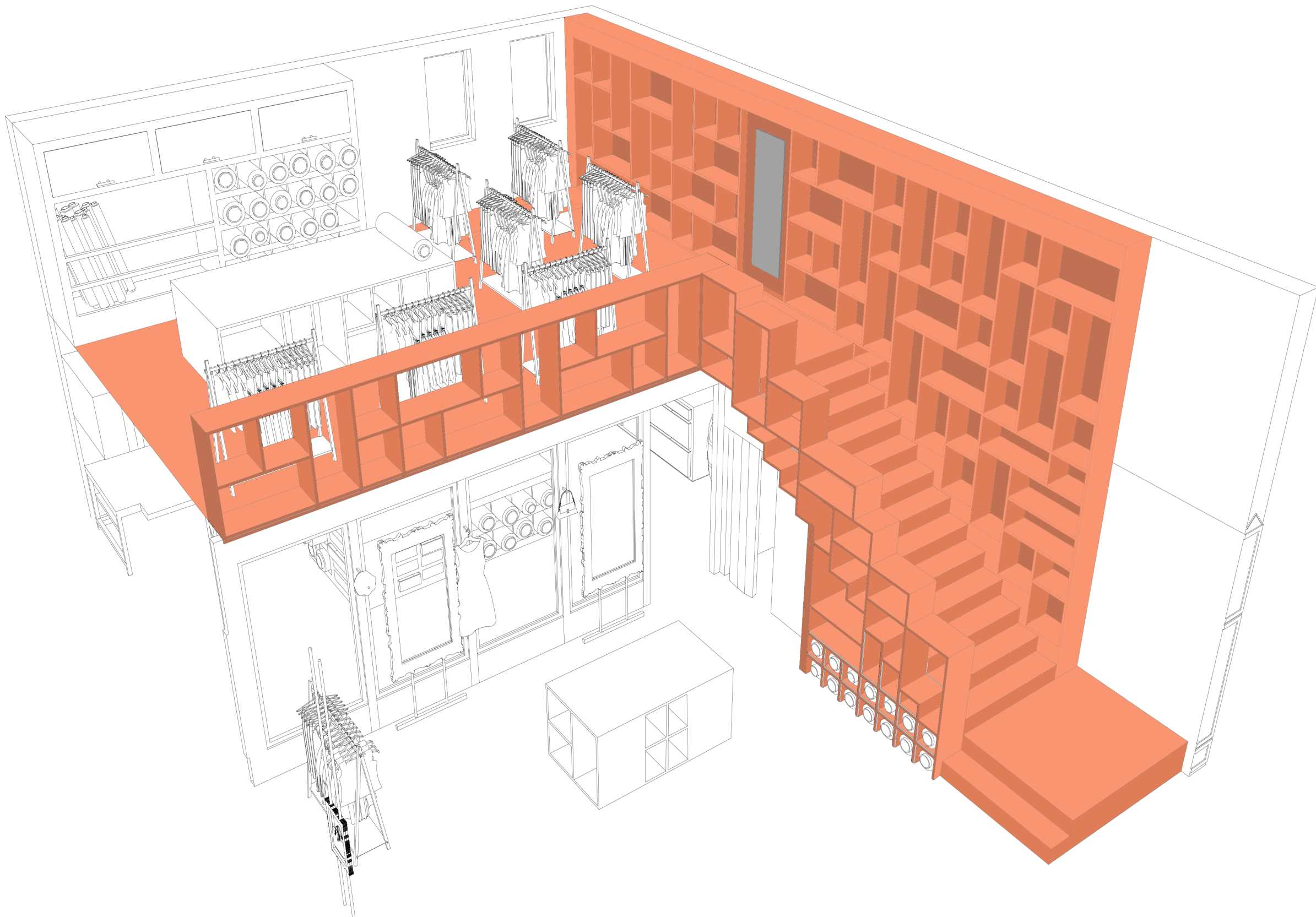
Transformation is a design proposal for the company Superella and will focus on creating a sustainable workshop/space for designers. A space for people to learn about upcycling clothing. There is so many fashion items ending up in land fill and or sitting in a wardrobe collecting dust. The lack of quality in clothing today is a main factor in the textile section of waste.

Using the space for people to donate, shop, and a production workshop will elevate a design and still be able to function as needed. The aim is to create a safe space for the public to come donate unwanted clothing items but also be able to browse and buy any freshly upcycled items they find within the space. A space for designers to also work and produce new pieces of clothing using the donated items. Having a space like this will keep the fabric circulating for longer giving the material a longer lifetime instead of ending up in land fill.

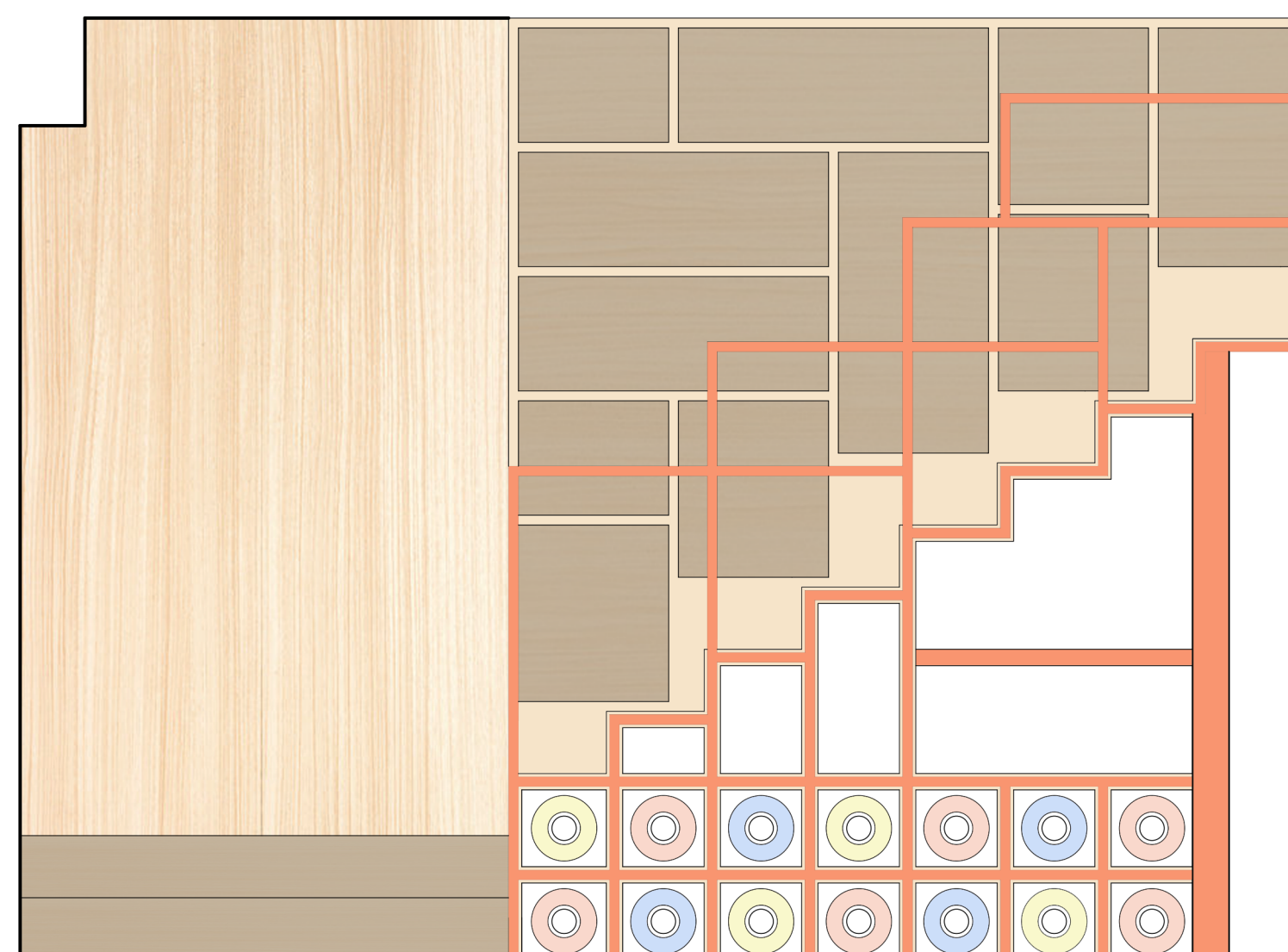


Stairs Drawing(Not To Scale)

Rendered stairs drawing to show how the storage has worked within the stairs and the first level



Stair detail to show how the storage and stairs work together and what materials has been used.



Site Analysis

Wind map
Site
Wind Path
Surrounding Buildings

Public Transport
Site
Train Station Direction
Bus Stop Direction
Roads
Surrounding Buildings

Acoustics
Site
High
Medium
Low
Roads
Surrounding Buildings

Walkability
Site
Pedestrians Only
Vehicles and Pedestrians
Roads
Surrounding buildings

Sun Path
Site
Sunset
Sunrise
Sun Path
Roads
Surrounding buildings

Location
Site
Vegetation
Footpaths
Carparks
Shopping
Roads
Surrounding buildings

