



Madeline Hill

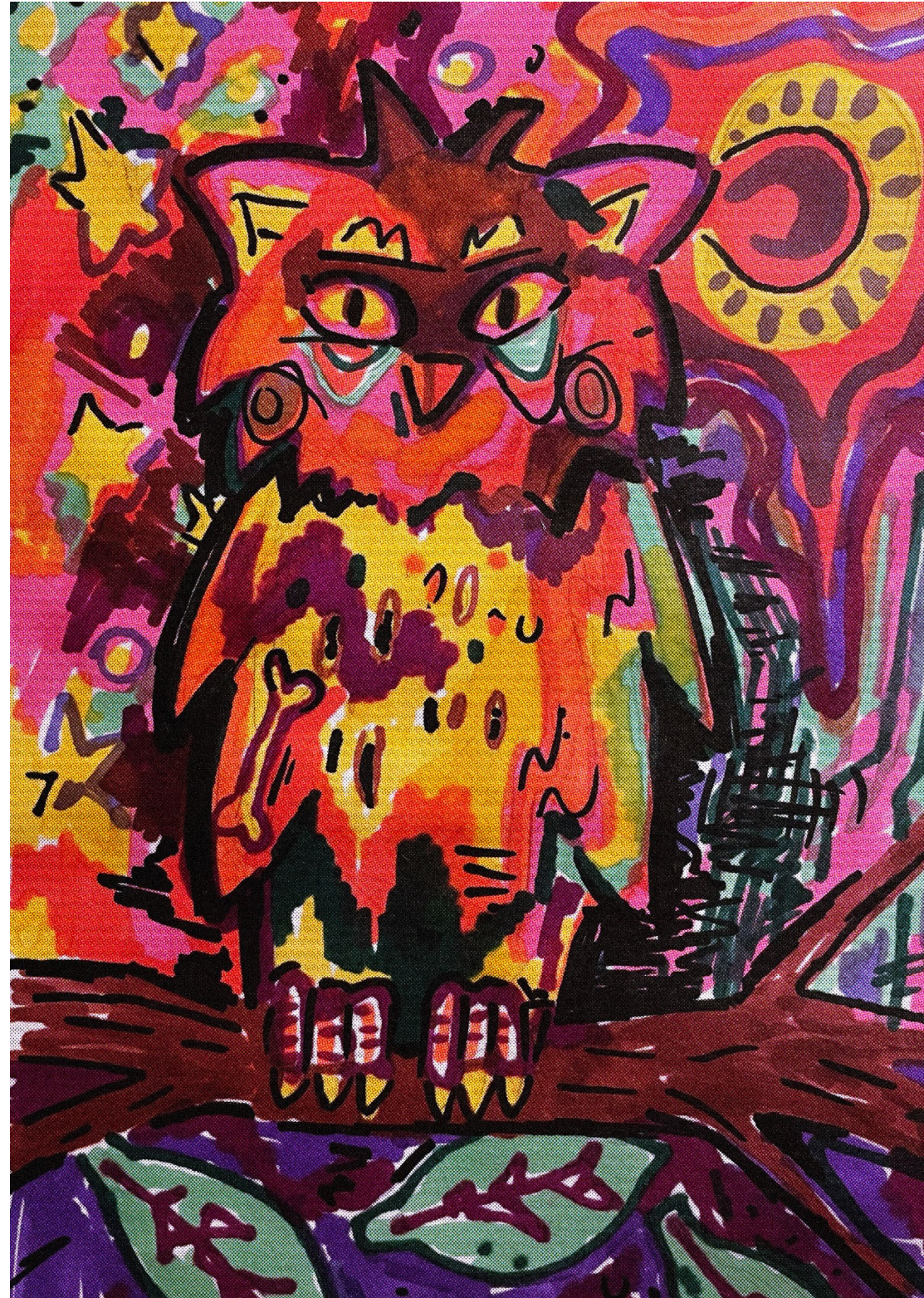
Artwork using vivid colour and bold shapes, often inspired by animals and nature.



Paths and Wayfinding - a mural project.

My Mural was designed for gardens with exotic plants - specifically aimed to be done in an outdoor space, like on brick walls or wooden fences. The mural was illustrated using posca pens and fine liners, using bright flat colours and mark making. I incorporated a variety of dangerous exotic plants and wild animals into my design - including 'the worlds stinkiest flower' *Rafflesia Arnoldii* (Corpse Flower).



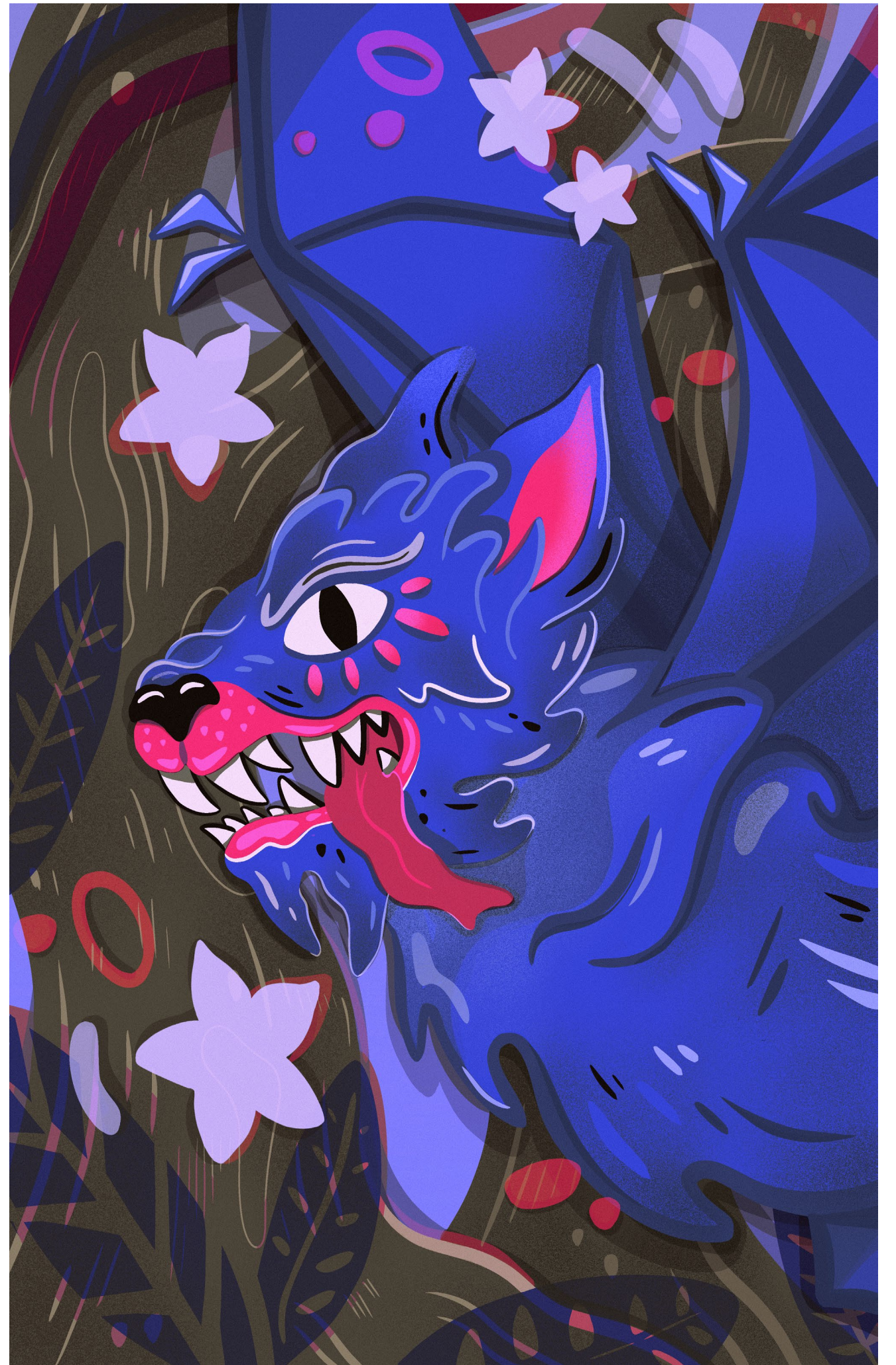
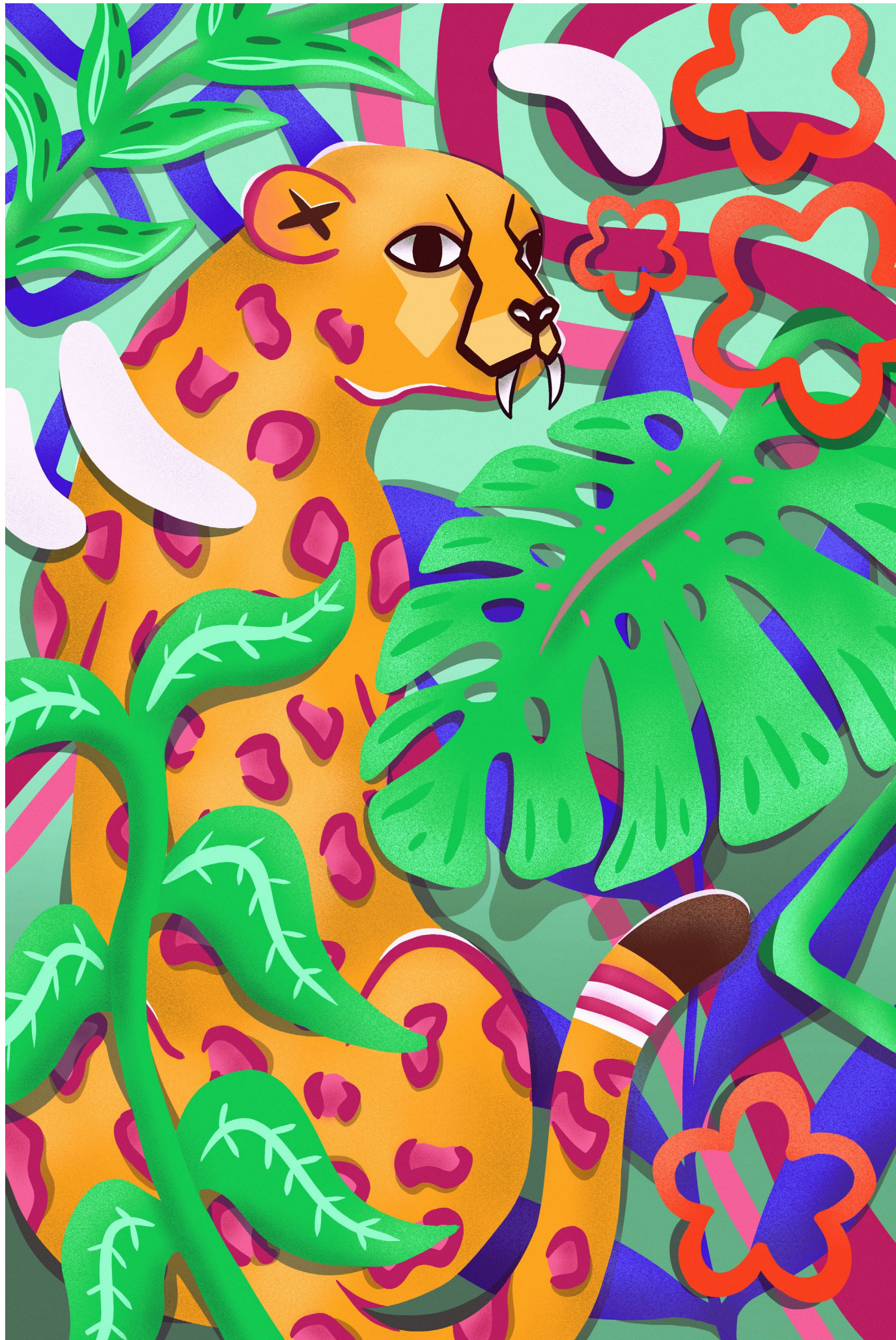


Self Promotion

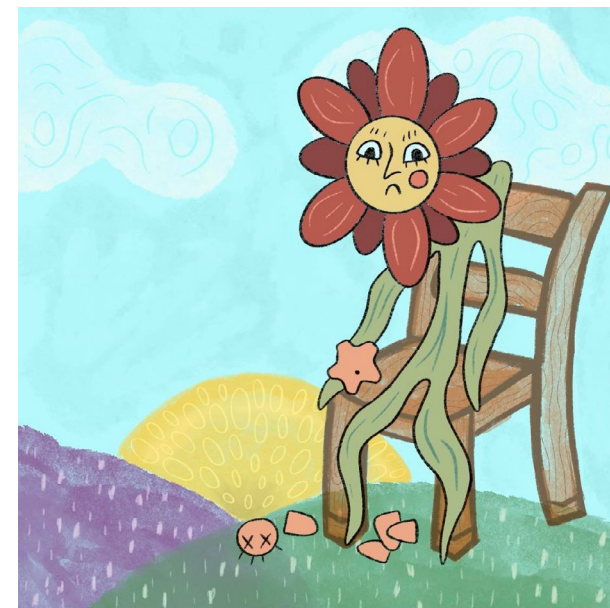
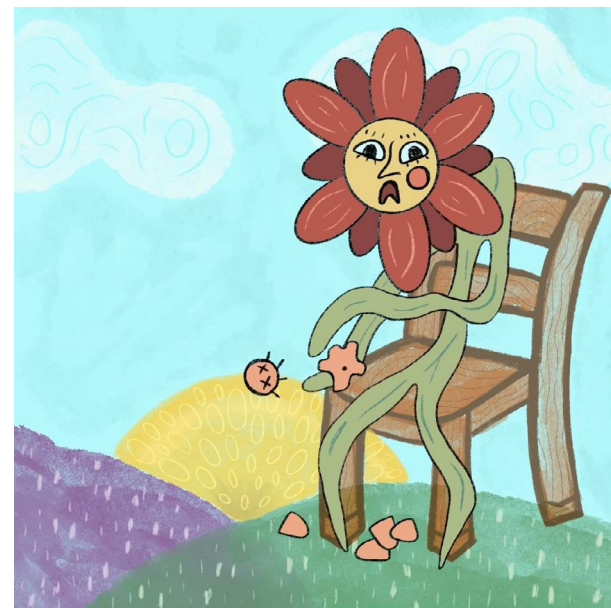
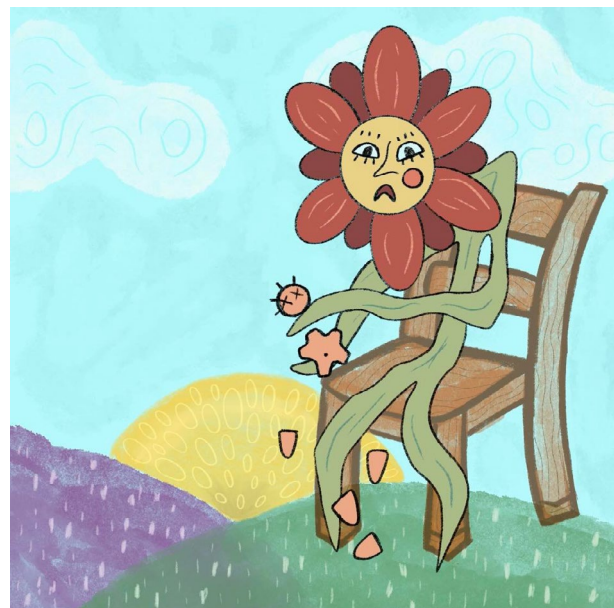
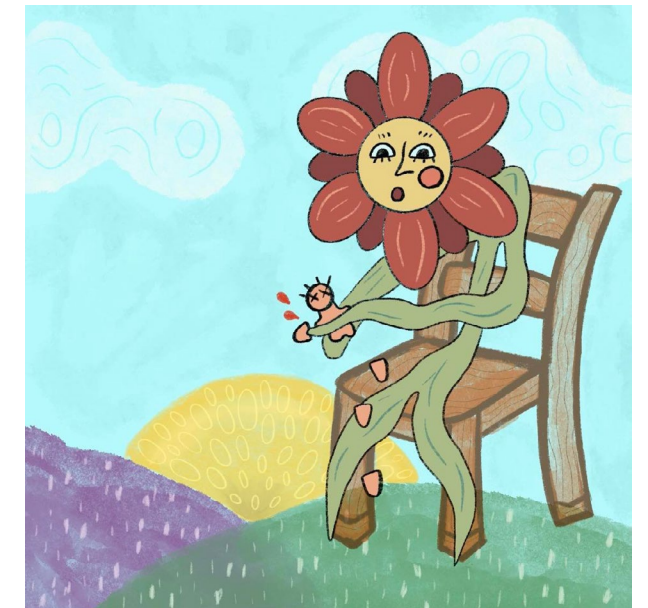
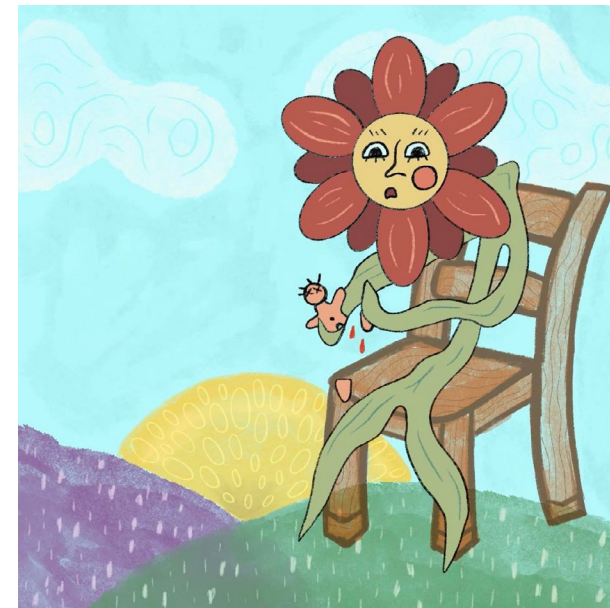
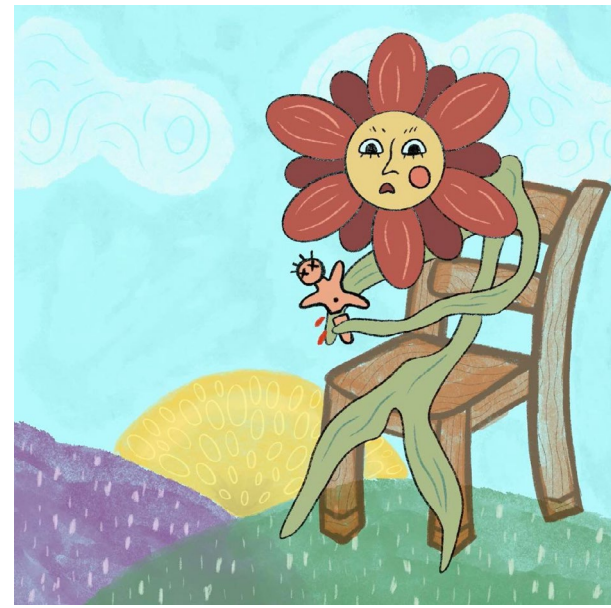
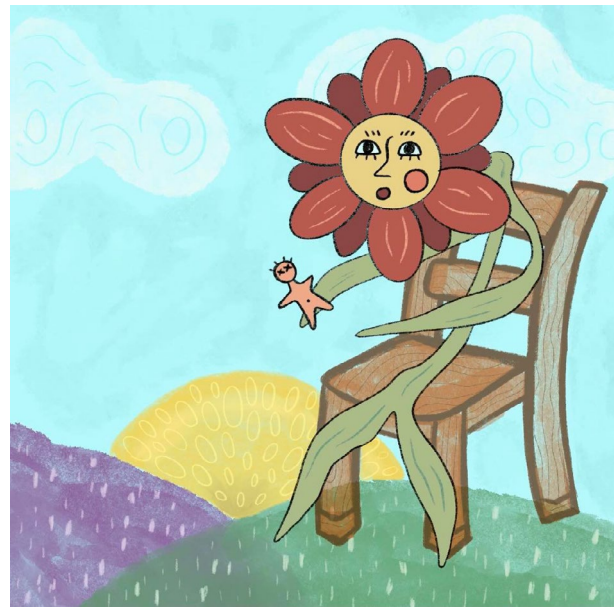
The aim of our self promotion project was to find and develop our own personal style - with my work often using vivid colours and bold shapes, with an emphasis on nature and animals. The owls here are development work, the first being a lino print followed by a marker pen drawing. The next two pages consist of more development work followed by a final four postcards done digitally for the project.











Self Promotion - 'She Loves Me Not'

For our Self-Promotion project we also needed to create a personalised website for our work. Along with other pieces, I included a short animation I created on Procreate of a flower pulling apart a human instead of vice versa - with the aim to not only experiment more with animation but also to further develop my personal style.



Wilder Doddington

The aim of this project was to design a poster that could be used to promote Doddington Hall's rewilding project. Rewilding is the conservation effort to protect natural processes and wilderness areas - my design in particular focused on the importance of the mycelium network. I initially lino cut my design and then later edited it digitally on Photoshop, cleaning it up and adding colour and highlights.





Making a scene.

For this project we had to create a '3D illustration' out of paper. We were randomly assigned a historical event, I got the Great Fire of London 1666 and combined my own personal style and experimentation with lighting for my final design. My second piece was based off photos I took at a pumpkin patch. I used fineliners and promarkers for my artwork, and tied thread to the hanging pieces in the background.





Negotiated Illustration

For our Negotiated Illustration module we were allowed to develop our own brief idea. I decided to design and create what could be individual posters for different singles in the 'Scott Pilgrim vs The World' soundtrack that could be an item included with the Vinyl. My artwork here is heavily influenced by videogames, a common theme throughout the Scott Pilgrim franchise, and comic book artwork. This artwork was created digitally on Procreate. The songs I chose to illustrate artwork for are: 'Black Sheep', 'Ramona' and 'Threshold'.

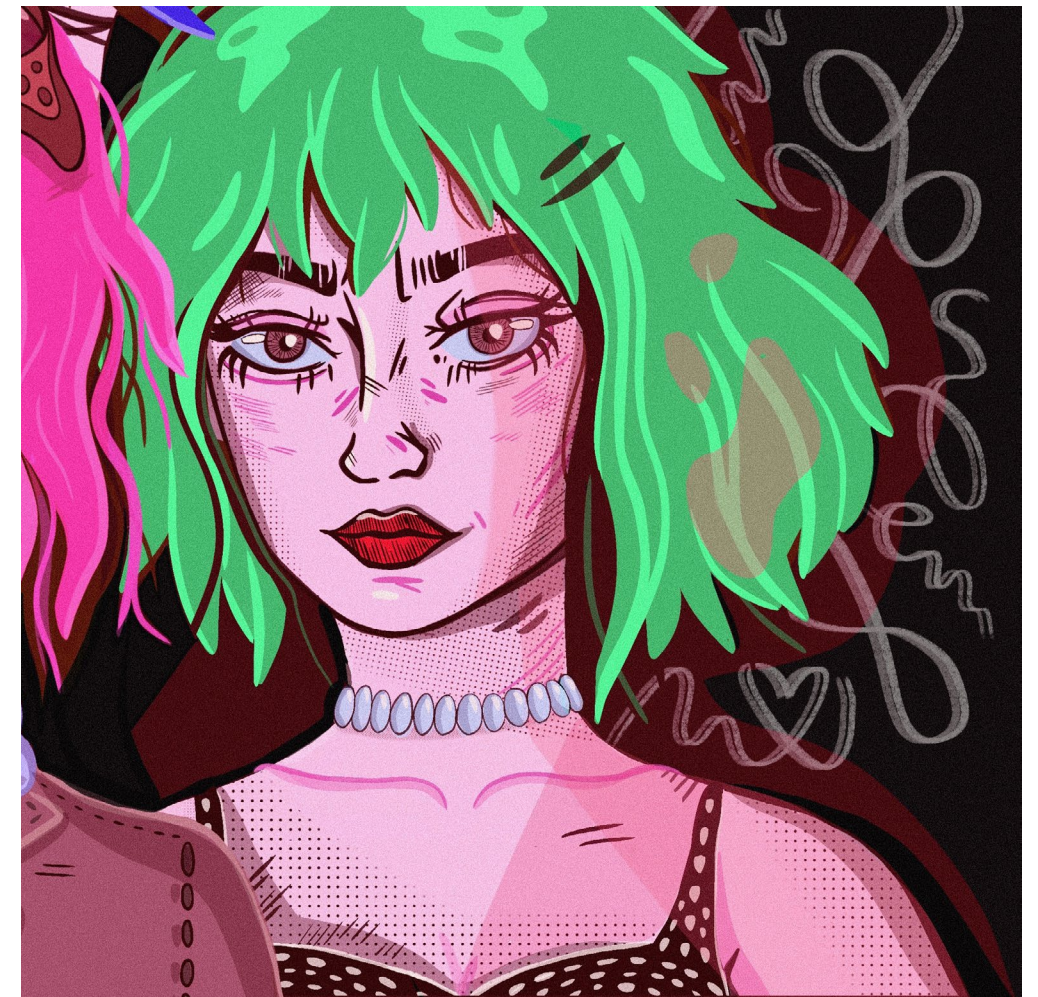


‘Black Sheep’





‘Ramona’





‘Threshold’





@urtangels



madelinehilldesign.godaddysites.com

maddiehill@live.co.uk

Madeline Hill