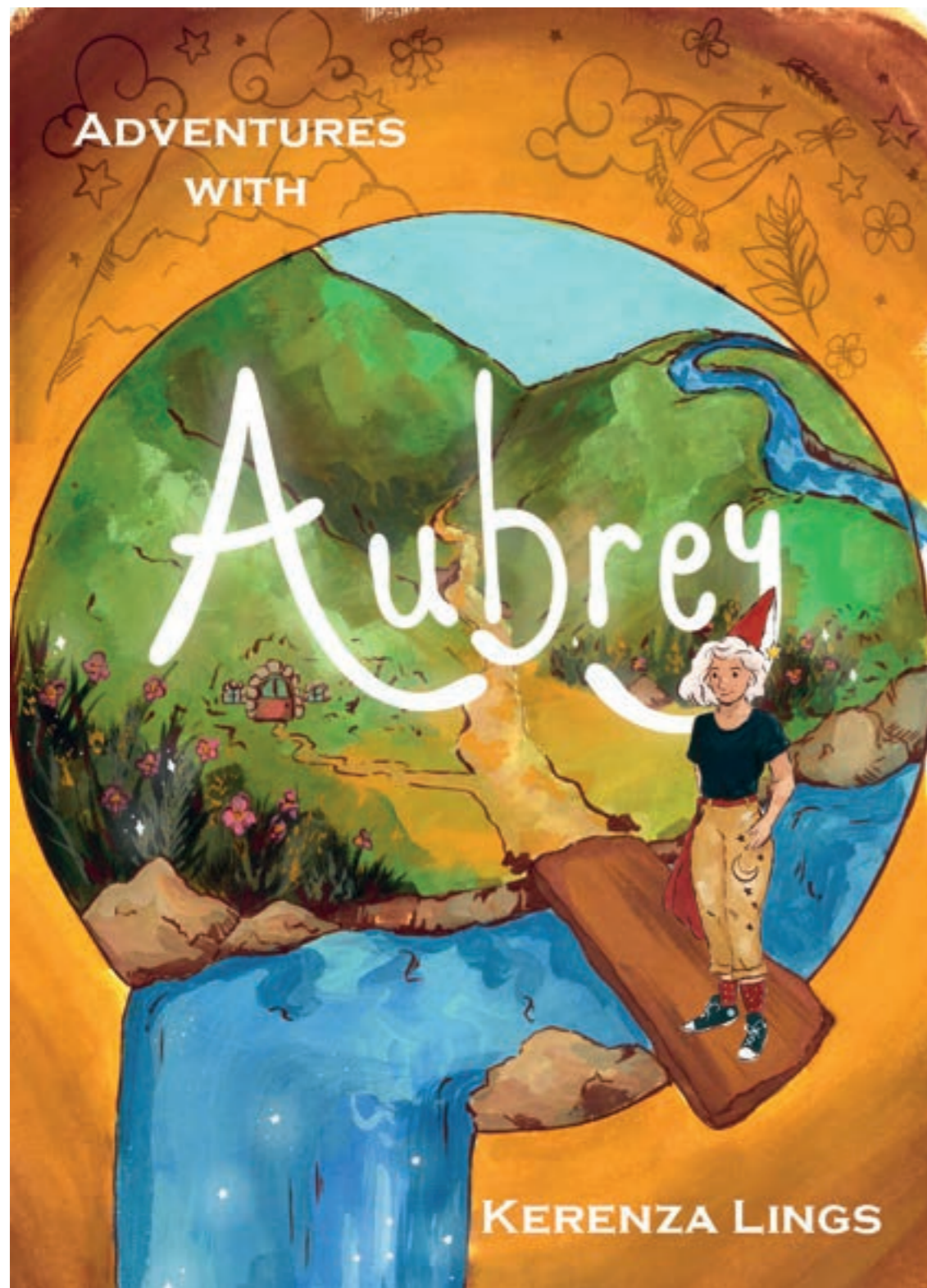




Kerenza Lings

Lover of children's books, painting,
and holding onto the handmade.





01: Negotiated Project - Children's adventure book

A Children's book centred around learning. The reader is guided through topics covered in the KS2 curriculum by a helpful wizard. Once the reading section is completed the knowledge gained is tested on a fold out map at the back of the book. It is designed to encourage learning by making it fun and gives the attainment of knowledge extra purpose.



Gordo's

pop up top up shop

Cape (3 colours available)	£14.20
Snack (surprise flavours)	£2.00
Crystal	£3.00
Gizmo the Lizard	£45.00
Snazzy hat	£18.50
Bottle of water	£1.80
Compass	£5.50
Rope	£3.00
Purple pencil of Araborne	£1.00
Tin of baked beans	£1.00
Magazine about lemons	£3.50
Matches	£2.75
Gloves	£4.50
Rainbow umbrella	£5.30
Michael the Owl	£50.00
Fishing rod	£25.00
Gordo's relaxation playlist	FREE
An impractical coin purse	£7.80
Whistle	£4.90
Small glass vile	£3.00
Mystery Potion	£17.60
Mirror	£20.00
Mystery egg	£6.00

OPEN

The River

Rivers, creeks, lakes, ponds, and streams are all freshwater habitats. Only one third of the world's water is fresh water. Freshwater attracts lots of species such as snails, worms, turtles, frogs, beavers, otters and dragonflies.

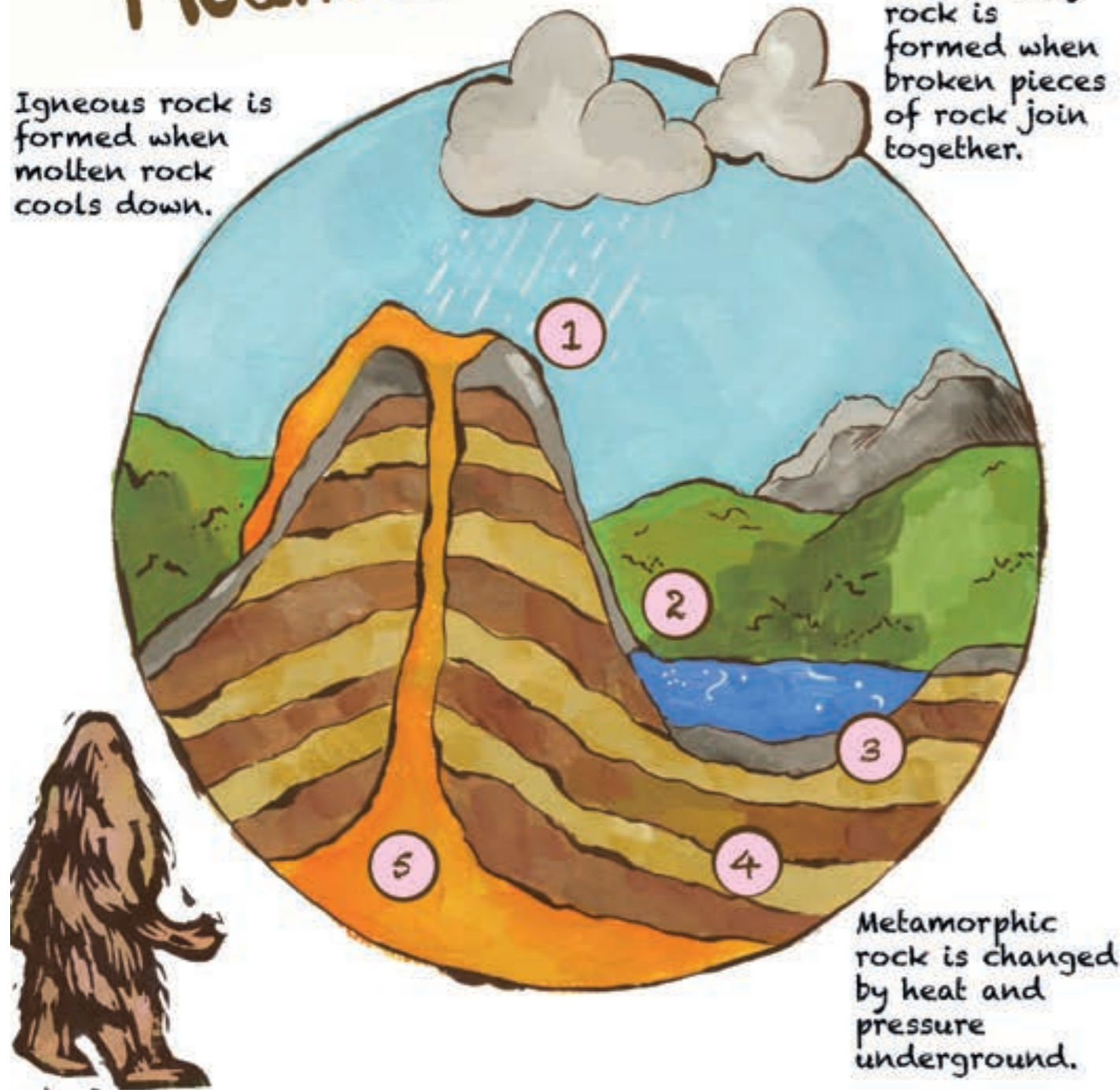
Large cities and small settlements tend to be formed near rivers. This is for a number of reasons. The river provides rich soil for farming and a constant flow of water. Also, they make the transportation of goods between areas easier. The River Thames flows through the south of England and passes through the capital city, London. Lots of trade occurred on and around the river which made London the city it is today!

Rivers flow from a source on high ground, downhill, then meander across land. They flow downhill due to gravity until a body of water is reached, such as a lake or a sea. They are formed when a strong enough water flow erodes the land beneath it.



The Mountains

Igneous rock is formed when molten rock cools down.



Some mountains are also volcanoes. The Earth's crust is made up of jigsaw like pieces called tectonic plates. Volcanic eruptions are usually caused by tectonic plates moving towards each other. The crust opens and magma, gases, and ash are allowed to escape. Breathing in volcanic ash can be harmful to the lungs and irritate the eyes. However volcanic ash can improve soil for crops and volcanoes bring in tourists to the area.

The rock cycle

1) Rock on the surface of the planet is broken down by the weather and water. This is called weathering or erosion.

2) Pieces of rock move and end up at the bottom of rivers and sea beds.

3) These pieces of rock build up in a process called sedimentation. Over time it becomes compacted and creates sedimentary rock

4) This is buried and the high temperature and pressure created metamorphic rock.

5) Magma and melted metamorphic rock get to the surface through volcanoes and cools to make igneous rock.

And Repeat!



Igneous Rocks:
Granite
Basalt

Most of the Earth's crust is made of igneous rock. The name means 'made from fire'.

The moon is made of igneous rock!

Metamorphic rocks:
Amphibolite
Gneiss
Marble
Slate
Quartzite

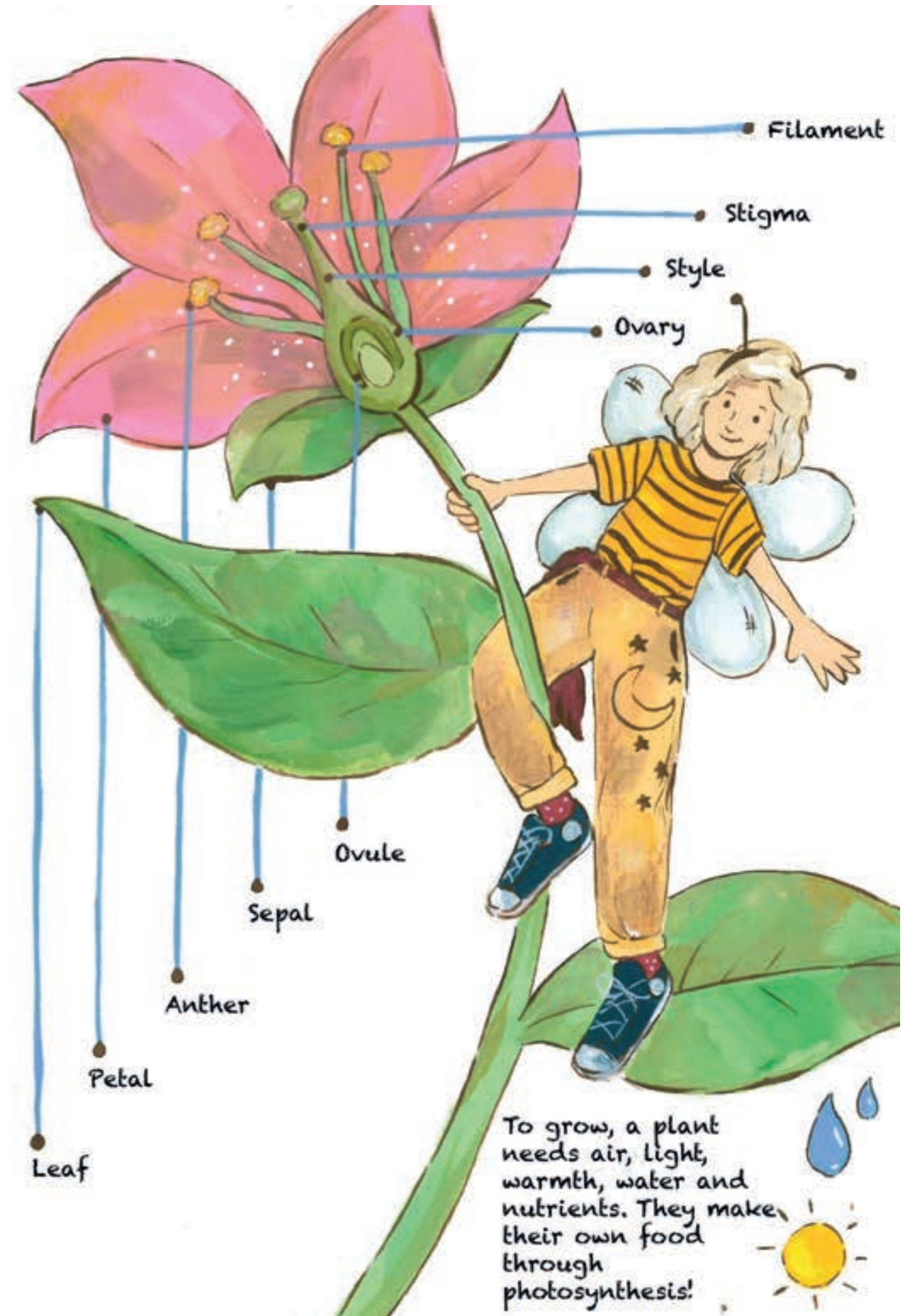
Sedimentary rocks:
Chalk
Limestone
Sandstone
Shale

MAY CONTAIN FOSSILS
(because sedimentary is formed on the Earth's surface without heat)

In order to reproduce, plants need insects such as bees. Bees carry pollen between flowers to make a seed, in a process called pollination. Flowers tend to be brightly coloured with an attractive scent so bees are drawn to them. Germination is the process where a seed develops into a plant. To do this, water is needed.



Pollen is produced in the flower by the anthers. Pollen is carried by insects from one flower and left on the stigma of another flower. Pollinating insects eat pollen and it helps them produce eggs. Plants also produce a sugary liquid called nectar which insects and some birds like to eat.



To grow, a plant needs air, light, warmth, water and nutrients. They make their own food through photosynthesis!





The Mountains

What are 3 reasons why people settle near rivers?

What kind of rock may contain fossils?

What is magma?

Design your own sea monster

Name 2 kinds of metamorphic rock.

Why might volcanoes have a positive effect on the surrounding area?

The River

Do you live near a river? What is it called?

What kind of rock is the moon made of?

Can you name 5 different bodies of water?

Why do rivers flow downhill?

The Woods

What part of the flower produces pollen?

Name 5 things plants need to grow and survive!

What is the process where plants make their own food called?

How might a plant attract bees?

What is germination?

Grab a pen and some paper to write down your answers as you go. If you need help, look back on the guide Audrey provided.

You have £50 to spend in Gord's pop up shop. What would you like to buy? How much change will you get?

Well done! You have completed the map! Thank you for your help.

What kind of energy is in an apple?

Name 2 things that may contain elastic energy

What is the transference of energy in lighting a match?

The Caves



02: Macmillan Children's Book competition

For this project I wrote a children's book based on a fairy tale called The Hedley Kow. I wanted the story to be fun and lighthearted.

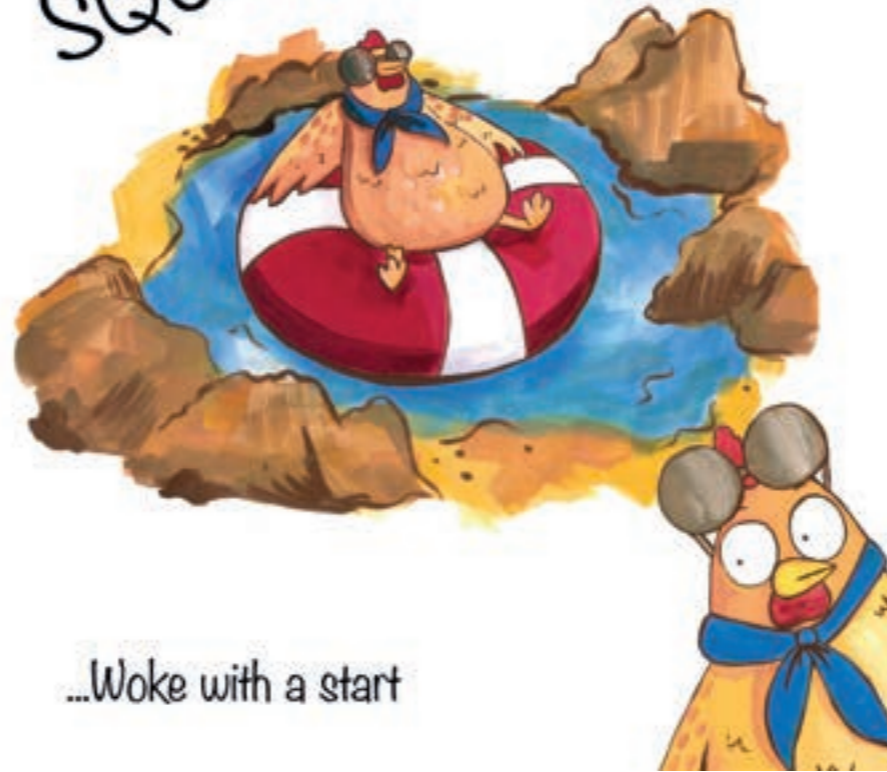


She waited and waited
with hope in her heart...

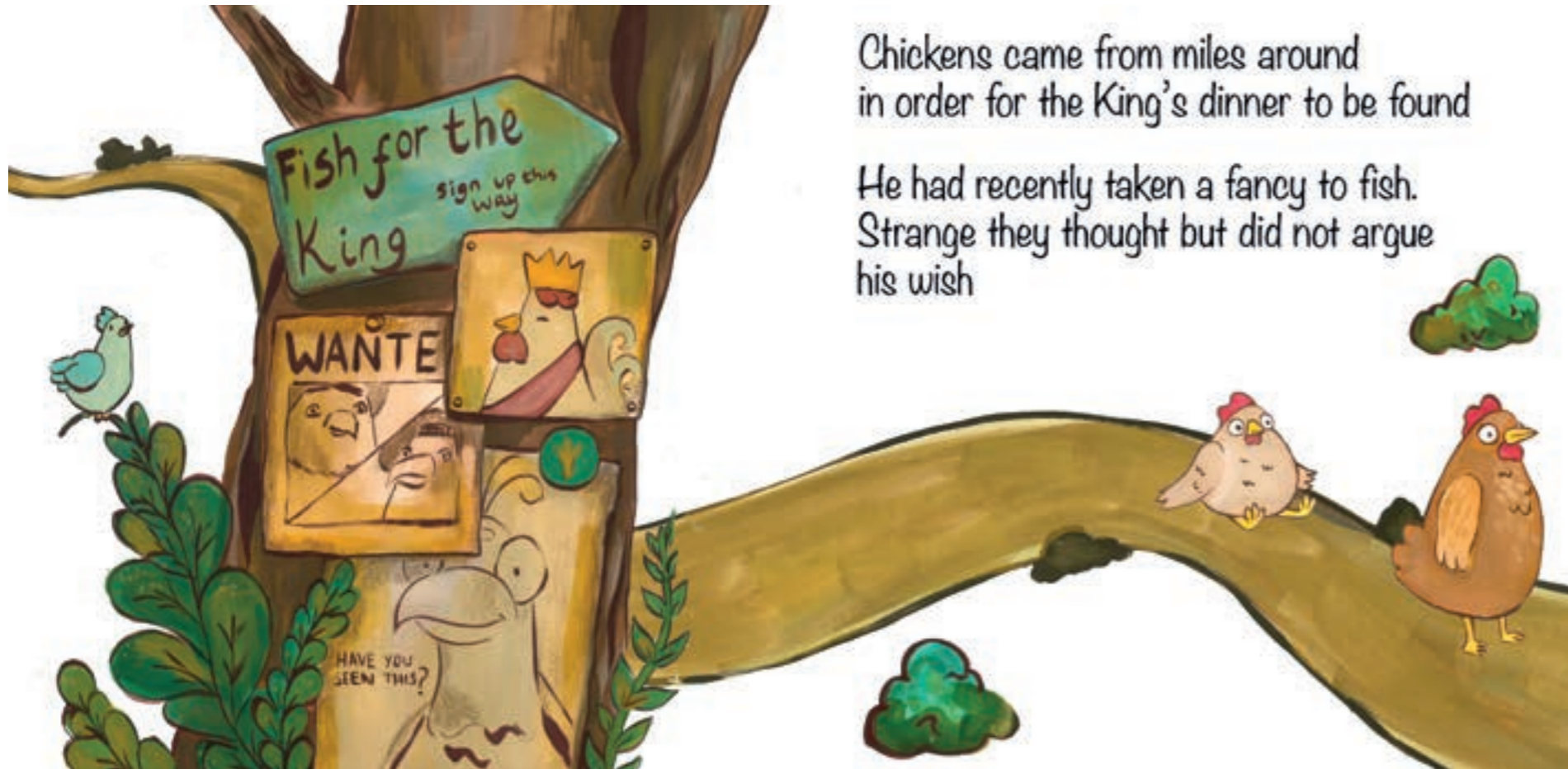


and...

SQUARK!



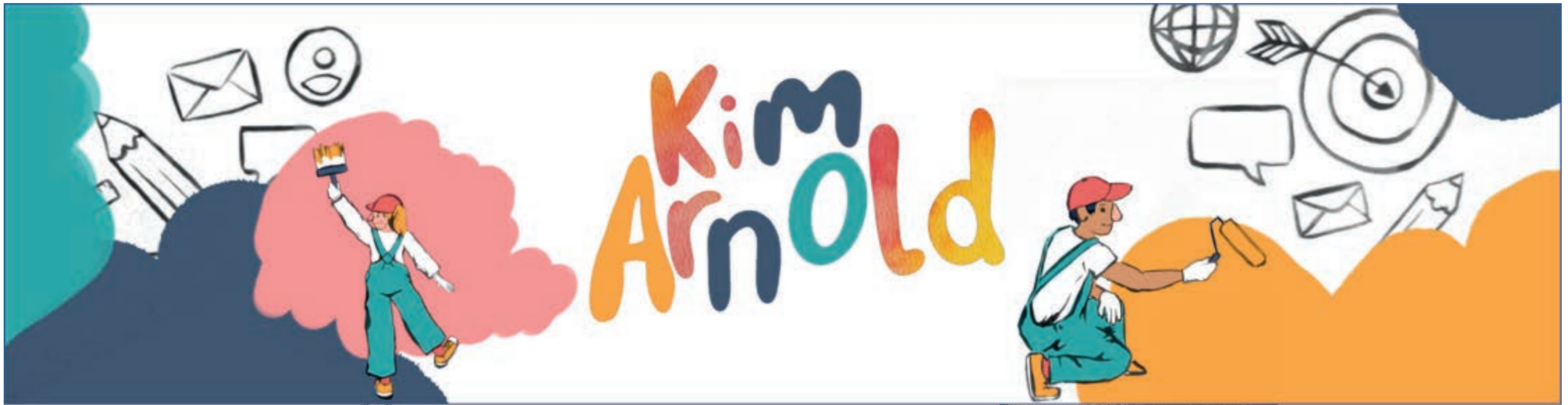
...Woke with a start



Chickens came from miles around
in order for the King's dinner to be found

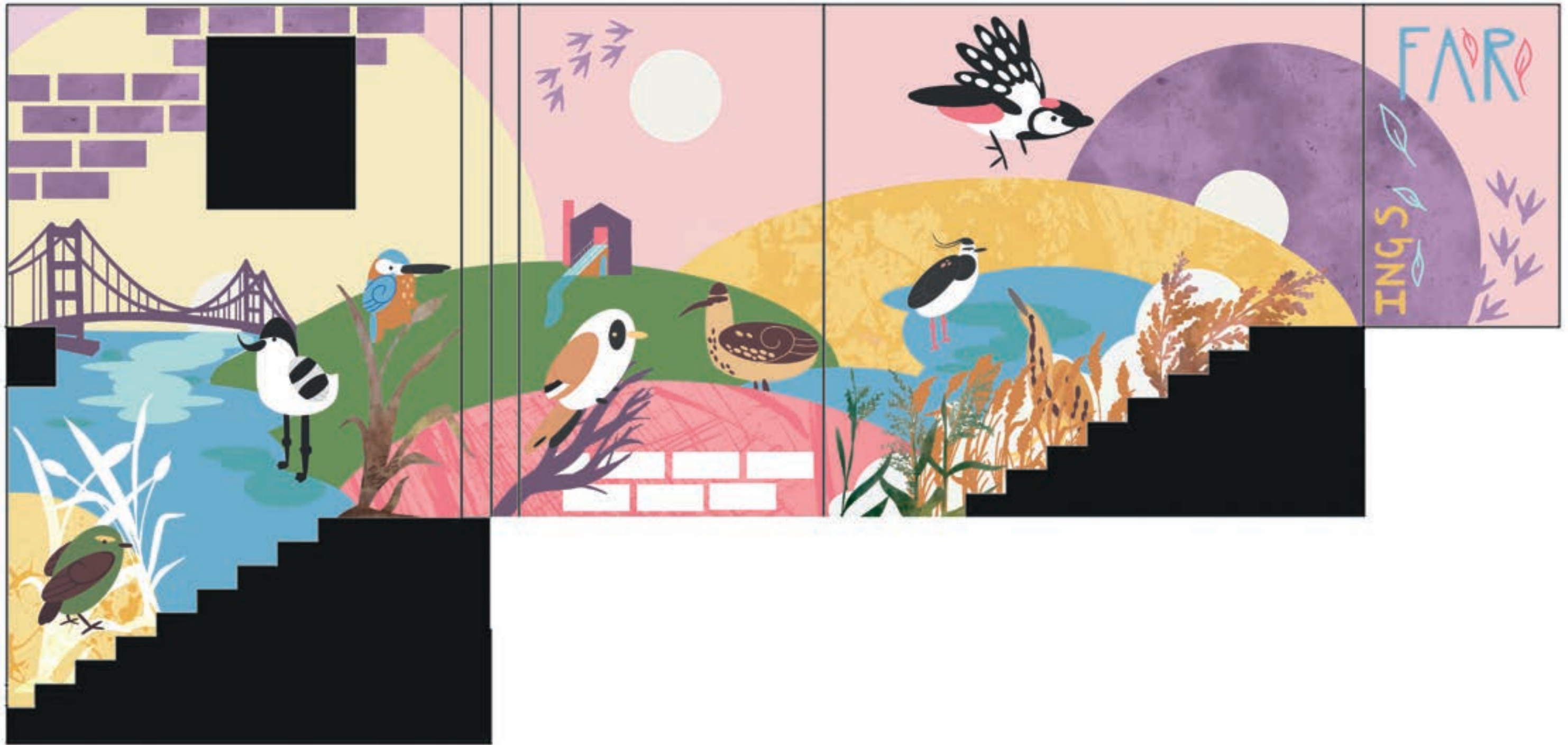
He had recently taken a fancy to fish.
Strange they thought but did not argue
his wish





03: Rebranding for Kim Arnold

For this project I had to create a logo, header, and three spot images for business woman Kim Arnold. Kim bases her business on removing jargon and making life for her customers easier. I wanted the images to be whimsical and entertaining, using a mixture of ink, collage and digital.



04: Far Ings Wildlife Mural

Far Ings Wildlife trust requested designs for a wildlife mural in their main stairwell to improve the bland walls. They wanted a design that could appeal to all ages and link back to their history as an old quarry. From the wildlife featured they wanted only the animals that appear at the grounds and for it to be a contemporary design, not one reflecting realism. I used bright colours to liven up the stairwell and rounded shapes to enhance conformity.



The Guardian Weekly



05: Editorial for The Guardian Weekly

This magazine cover project required two things to be featured. The presentation of numerical information and the representation of happiness. The main flower head is a pie chart featuring a spread of the figures provided, the three happiest are exposed to the sun and the three saddest are in greyscale.



06: Images for self promotion

As part of my project for self promotion I created a series of images to be used on my website, business card, and as part of my promotional item. I wanted them to be inkeeping with my general style and also show whimsical elements. The snail and the chicken are spot images as well as stickers, and the portrait is my profile on the website and business card.





Kerenza Lings



kerenza_illustrates



<https://kerenzalings.wixsite.com/>

kerenzaillustrates



07490862748

